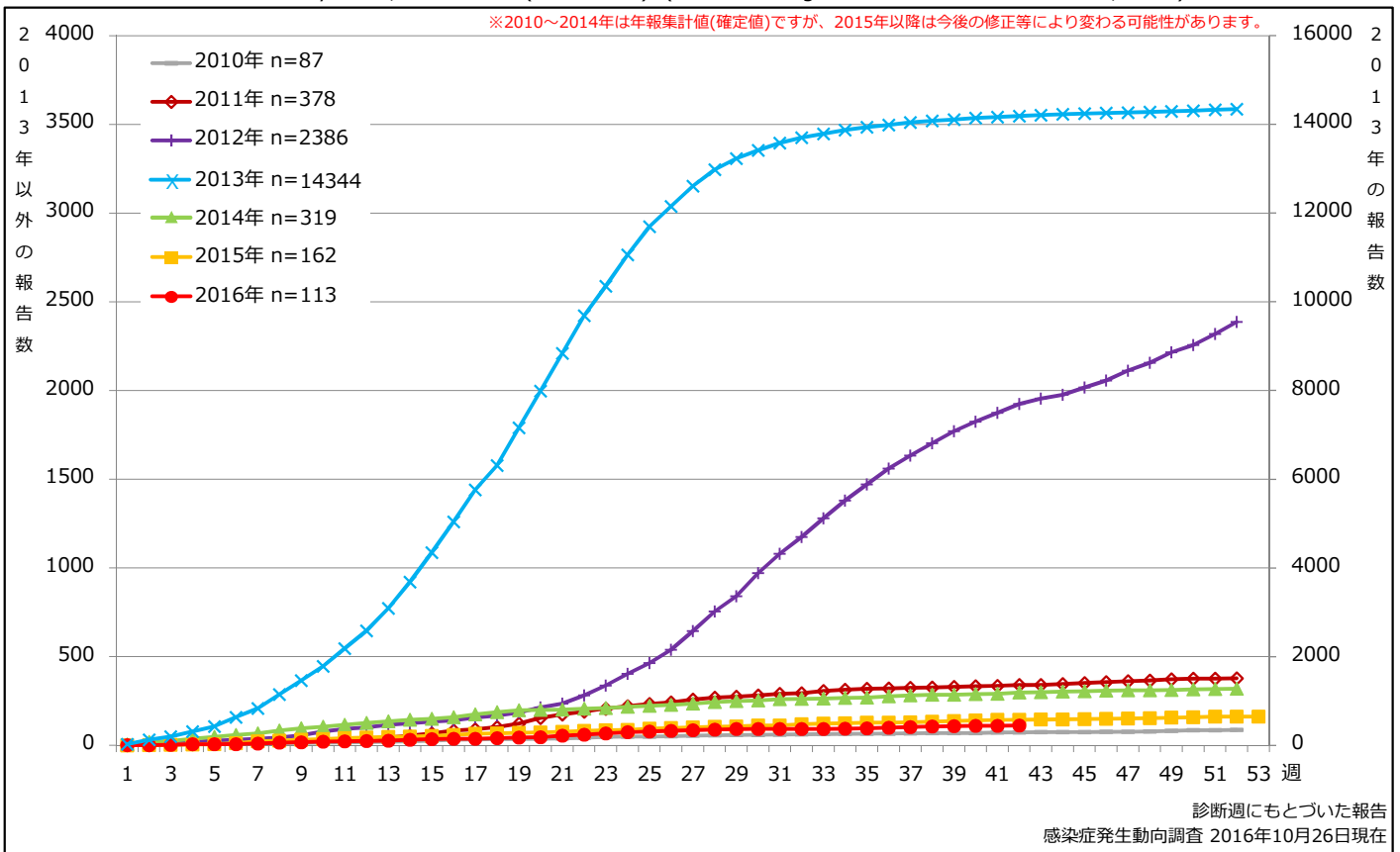


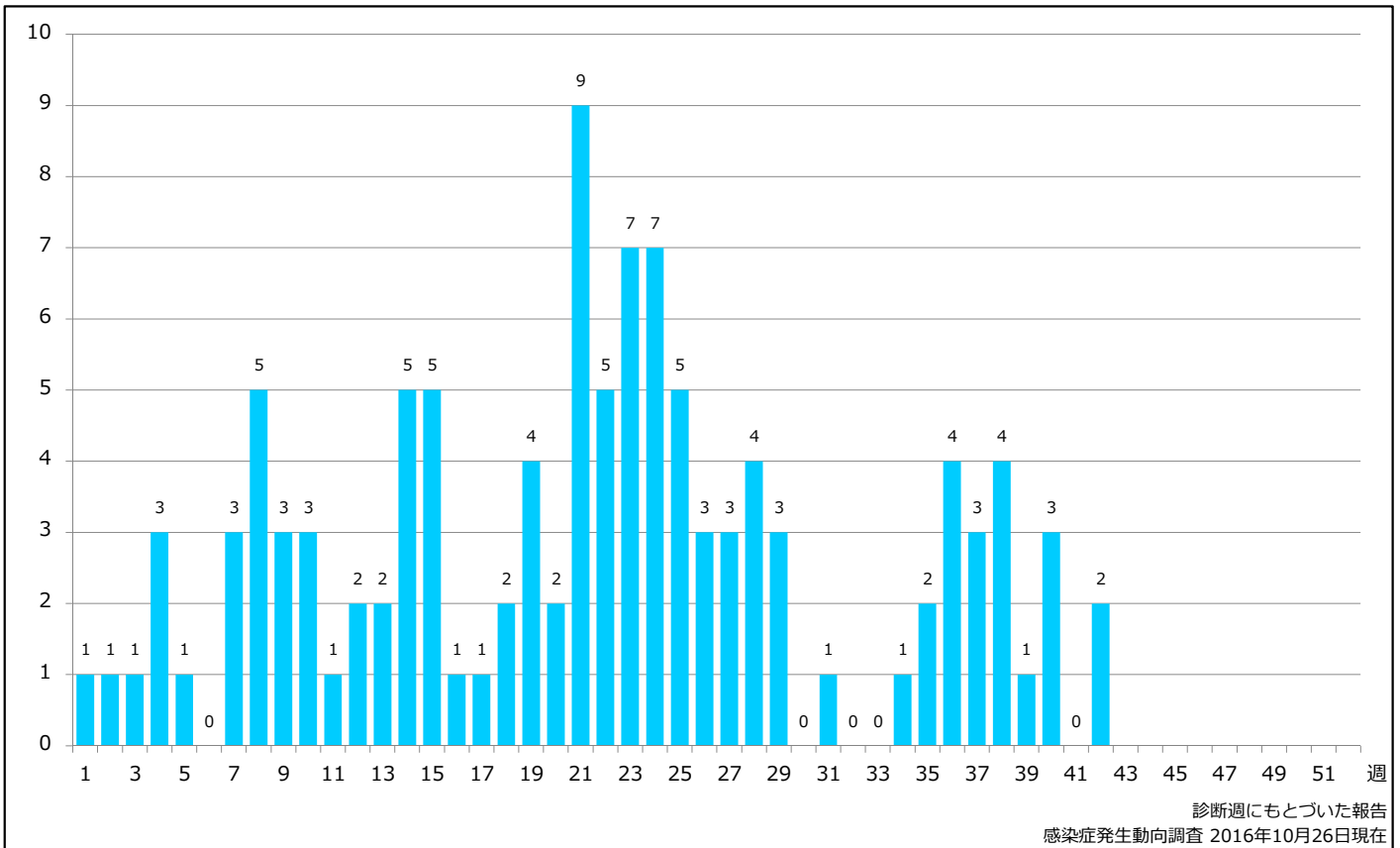
1. 風しん累積報告数の推移 2010~2016年 (第1~42週)

Cumulative rubella cases by week, 2010-2016 (week 1-42) (based on diagnosed week as of October 26, 2016)



2. 週別風しん報告数 2016年 第1~42週 (n=113)

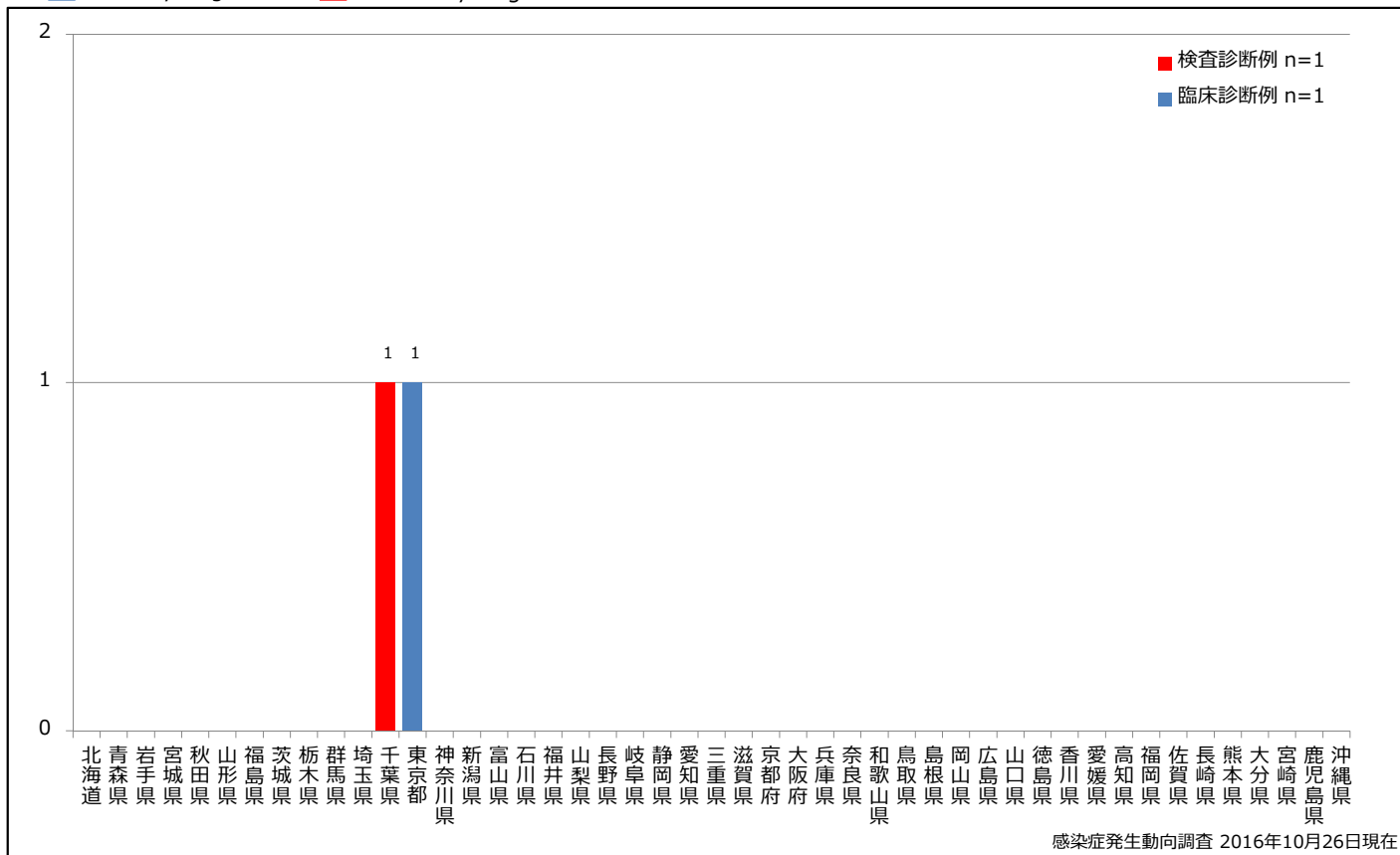
Weekly rubella cases, week 1-42, 2016 (based on diagnosed week as of October 26, 2016)



3. 都道府県別病型別風しん報告数 2016年 第42週 (n=2)

Reported rubella cases by prefecture and methods of diagnosis in week 42, 2016 (as of October 26, 2016)

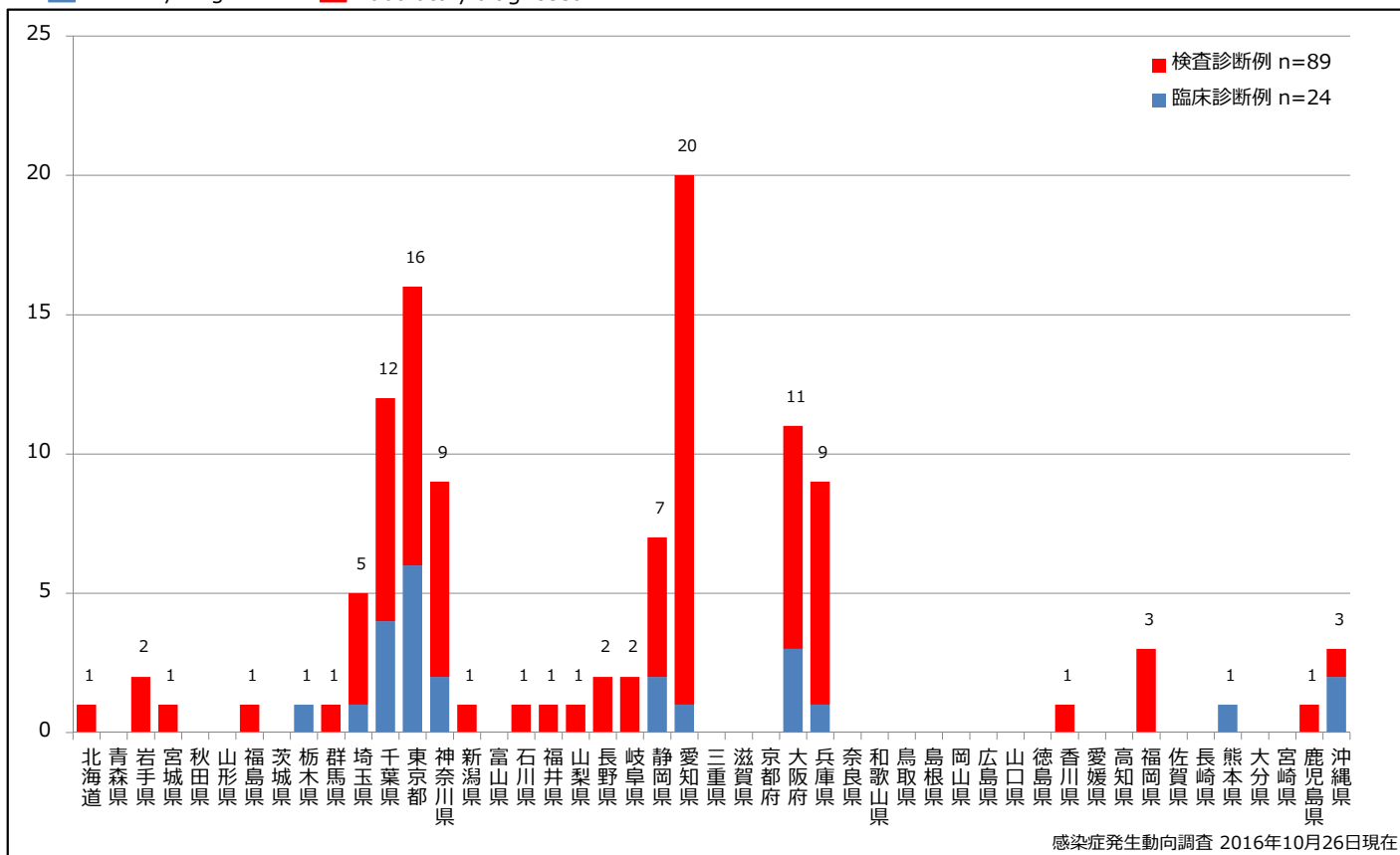
■ Clinically diagnosed ■ Laboratory diagnosed



4. 都道府県別病型別風しん累積報告数 2016年 第1~42週 (n=113)

Cumulative rubella cases by prefecture and methods of diagnosis, week 1-42, 2016 (as of October 26, 2016)

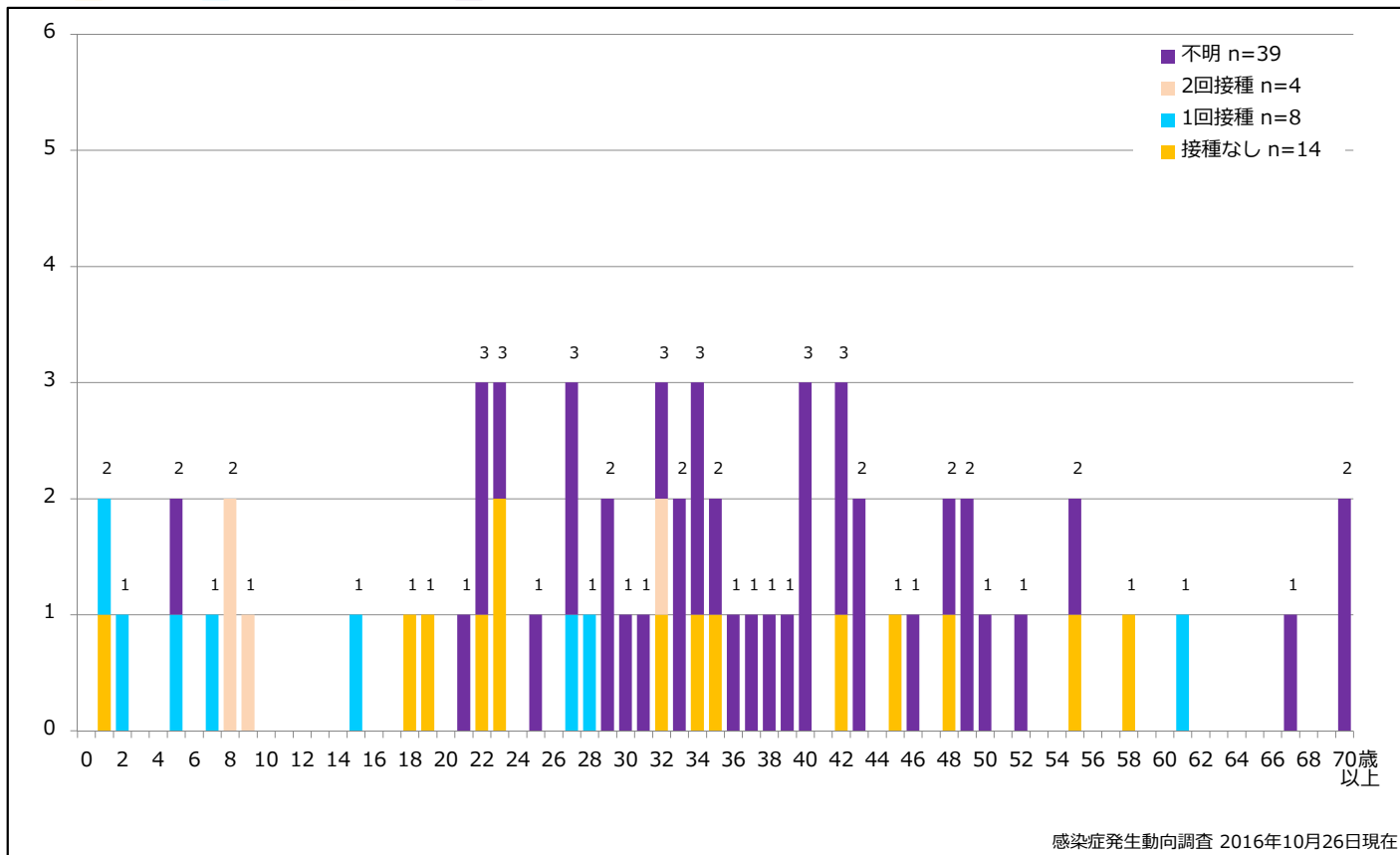
■ Clinically diagnosed ■ Laboratory diagnosed



5-1. 年齢群別接種歴別風しん累積報告数 (男性) 2016年 第1~42週 (n=65)

Cumulative rubella cases (male) by age and vaccinated status, week 1-42, 2016 (as of October 26, 2016)

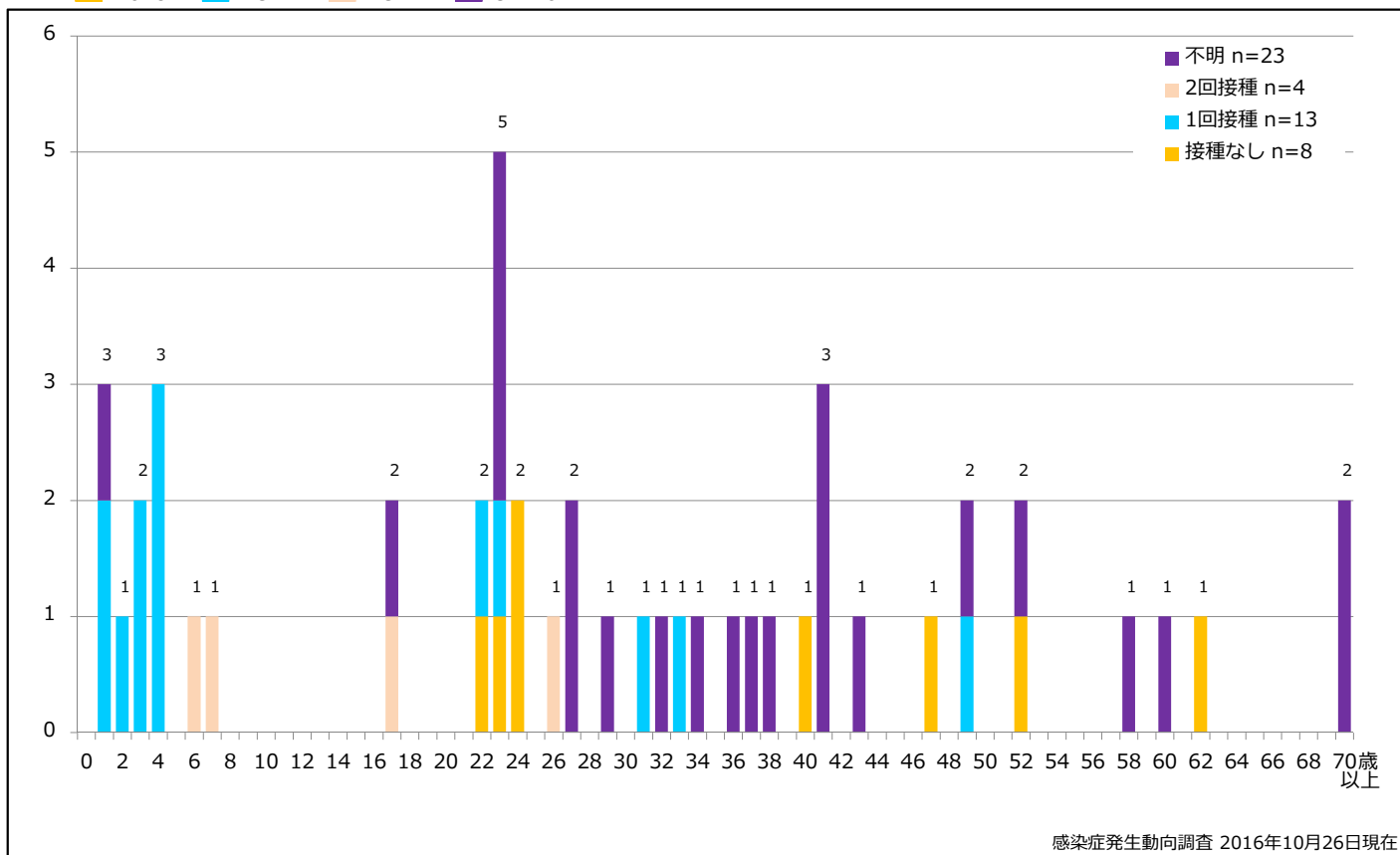
None RCV1 RCV2 Unknown



5-2. 年齢群別接種歴別風しん累積報告数 (女性) 2016年 第1~42週 (n=48)

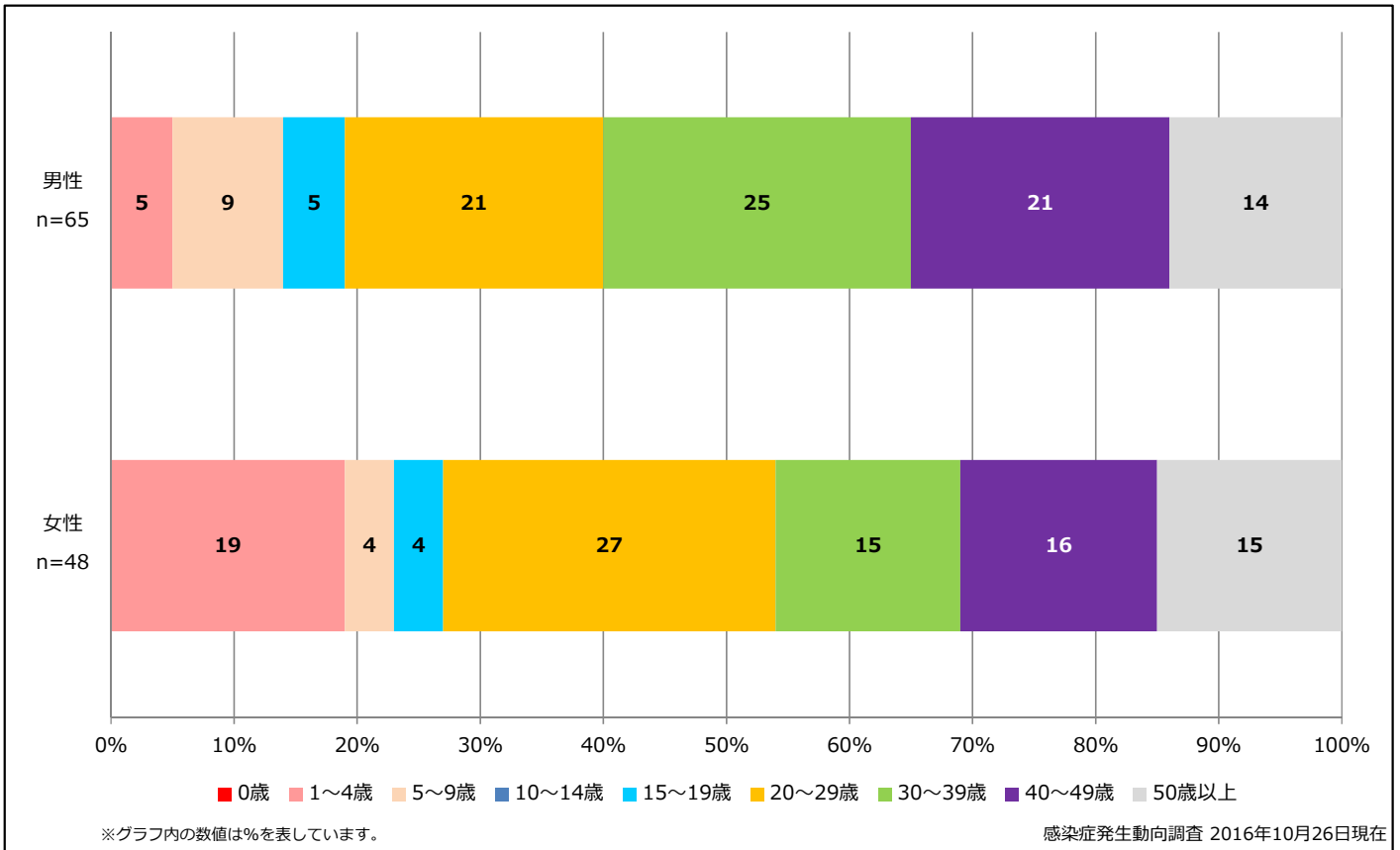
Cumulative rubella cases (female) by age and vaccinated status, week 1-42, 2016 (as of October 26, 2016)

None RCV1 RCV2 Unknown



6. 年齢群別風しん累積報告数割合 (男女別) 2016年 第1~42週 (n=113)

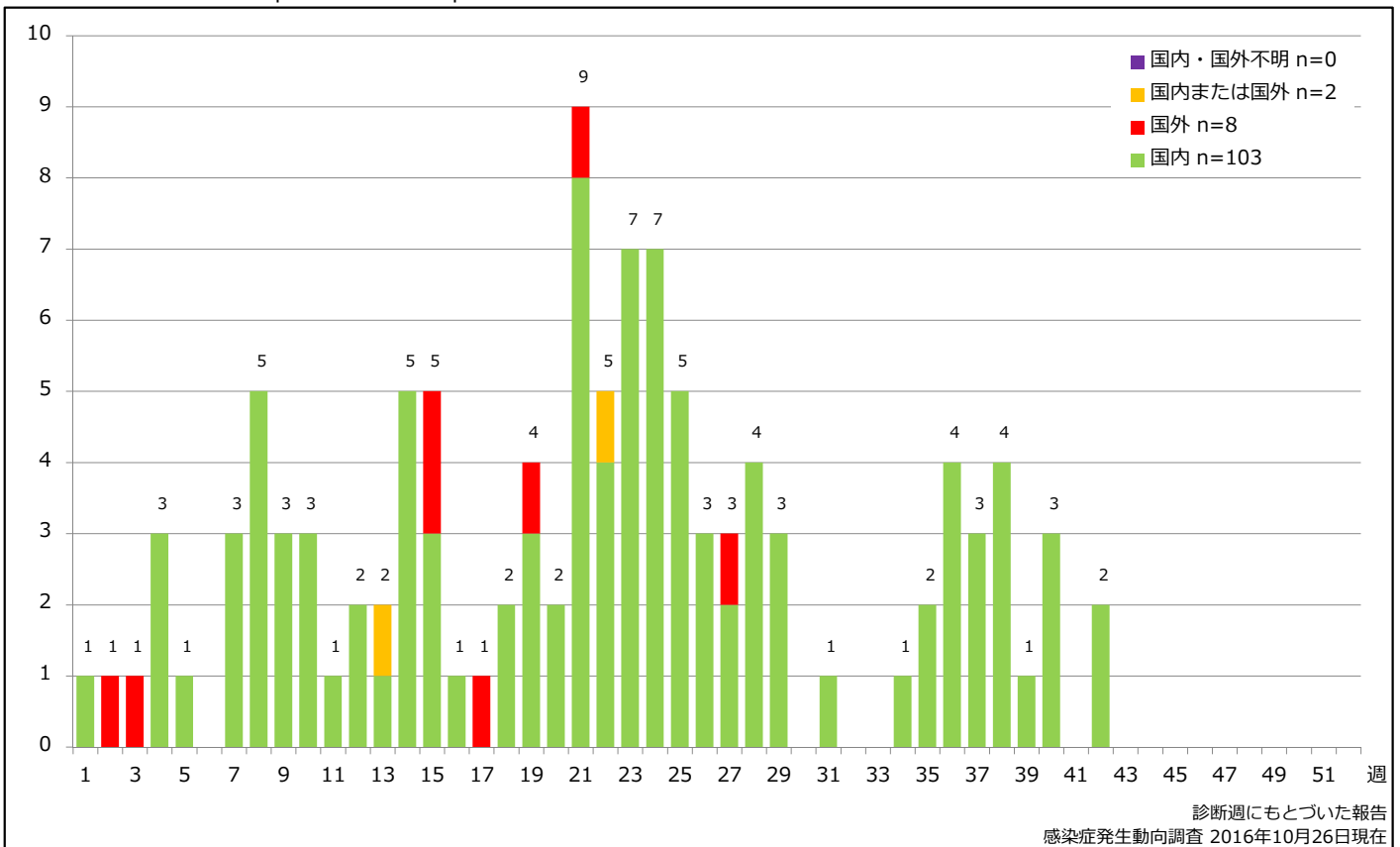
Percentage of cumulative rubella cases (upper: male, bottom: female) by age group, week 1-42, 2016 (as of October 26, 2016)



7. 週別推定感染地域(国内・外)別風しん報告数 2016年 第1~42週 (n=113)

Weekly rubella cases by acquired region, week 1-42, 2016 (based on diagnosed week as of October 26, 2016)

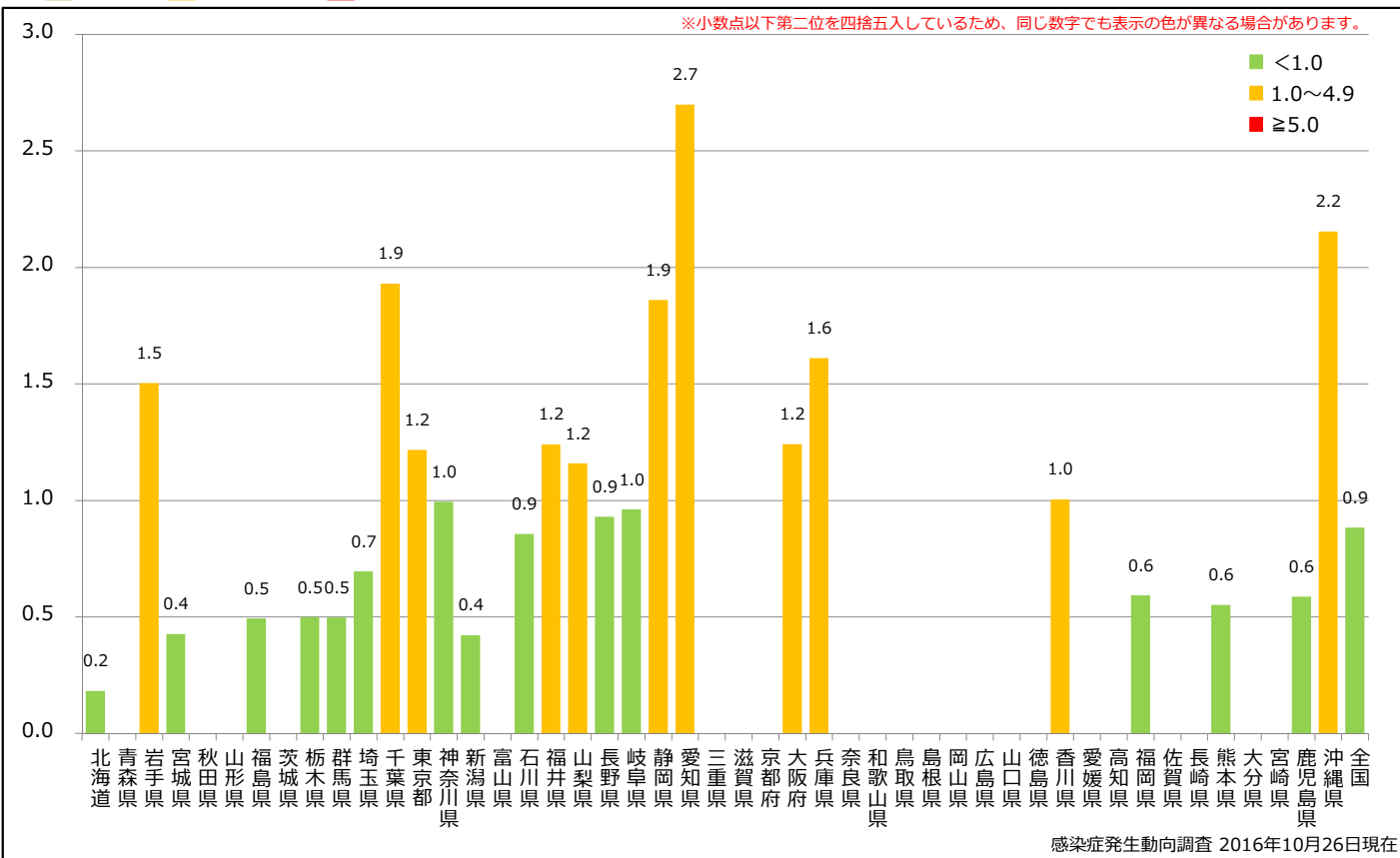
Domestic Imported Unspecified Unknown



8. 都道府県別人口百万人あたり風しん報告数 2016年 第1~42週 (n=113)

Reported rubella cases per 1 million population by prefecture, week 1-42, 2016 (as of October 26, 2016)

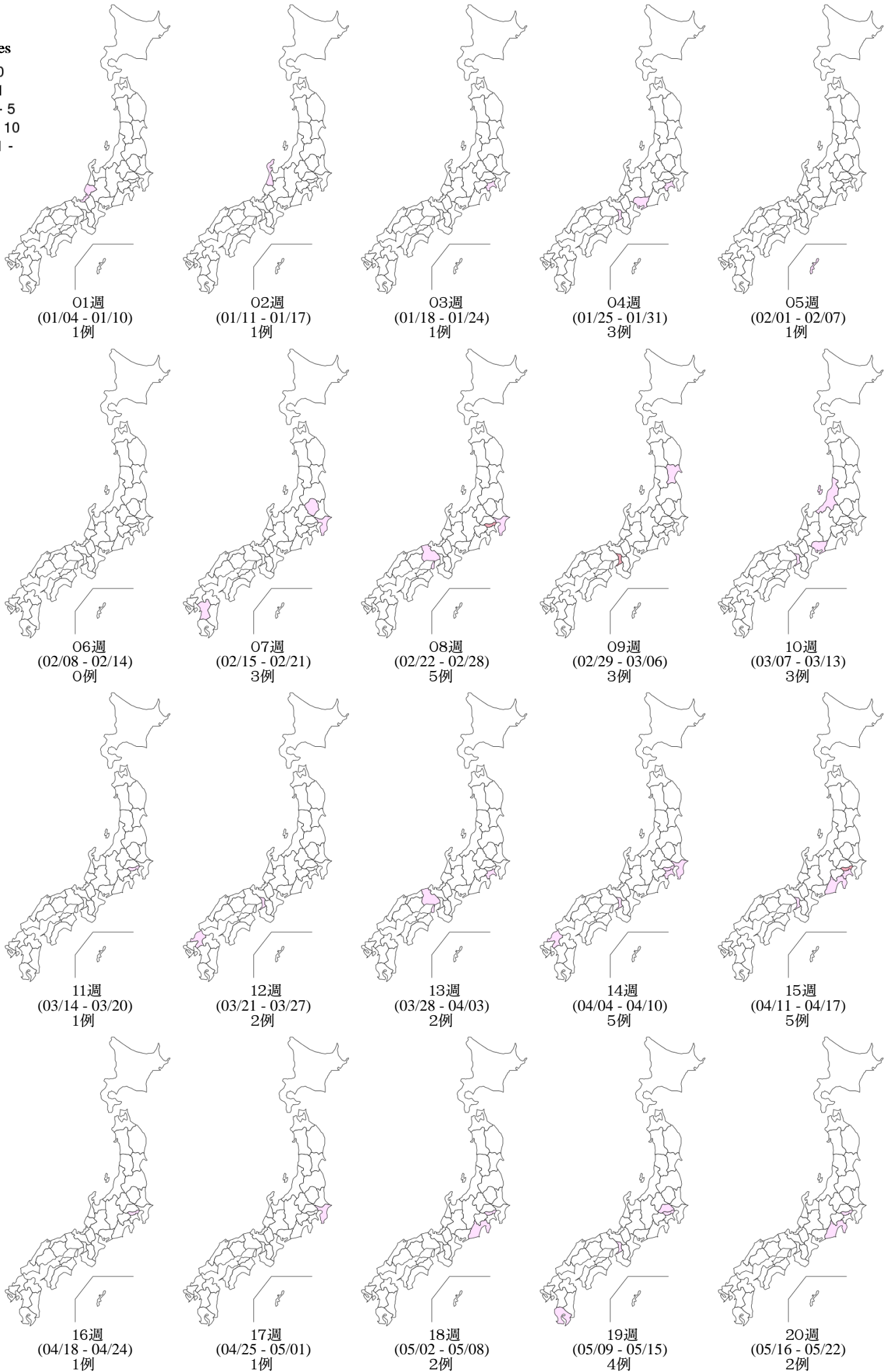
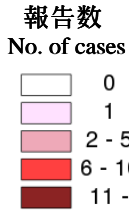
■ <1.0 ■ 1.0~4.9 ■ ≥5.0



9. 都道府県別風しん週別報告状況 2016年 第1~42週 感染症発生動向調査

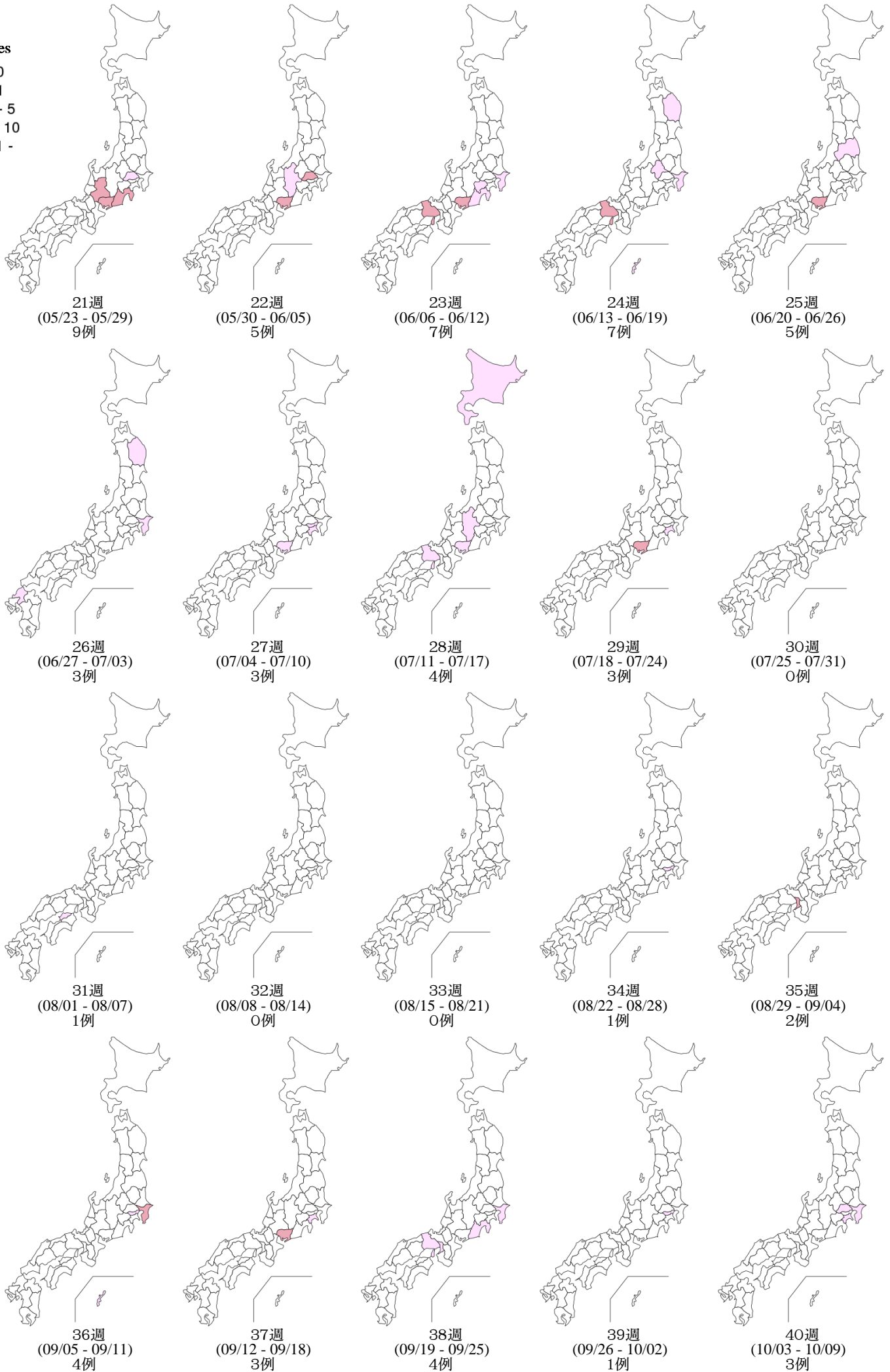
2016年10月26日現在

Weekly rubella cases from week 01 to week 42, 2016 (based on diagnosed week as of October 26, 2016)



Weekly rubella cases from week 01 to week 42, 2016 (based on diagnosed week as of October 26, 2016)

報告数
No. of cases



9. 都道府県別風しん週別報告状況 2016年 第1~42週 感染症発生動向調査

2016年10月26日現在

Weekly rubella cases from week 01 to week 42, 2016 (based on diagnosed week as of October 26, 2016)

報告数
No. of cases

