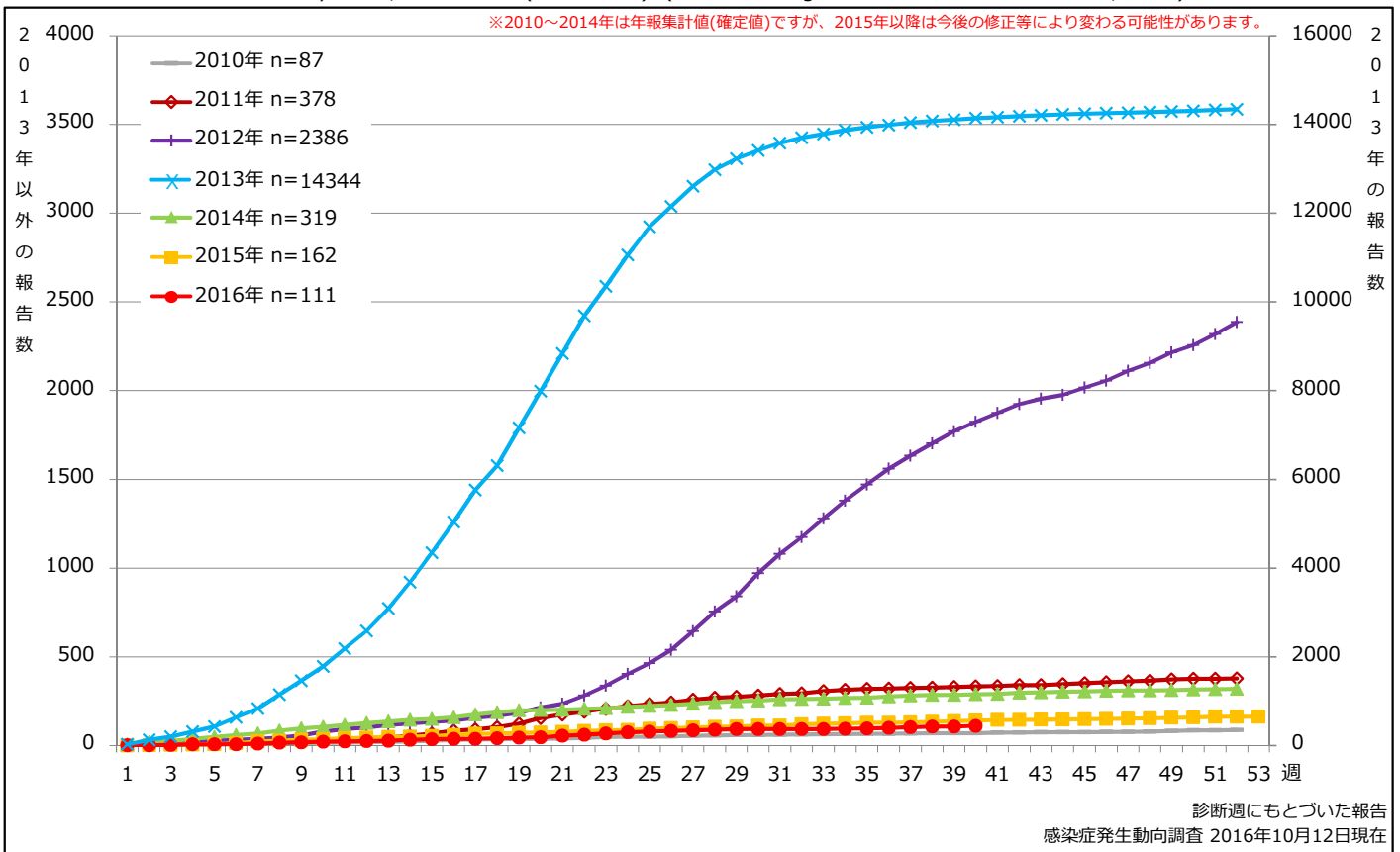


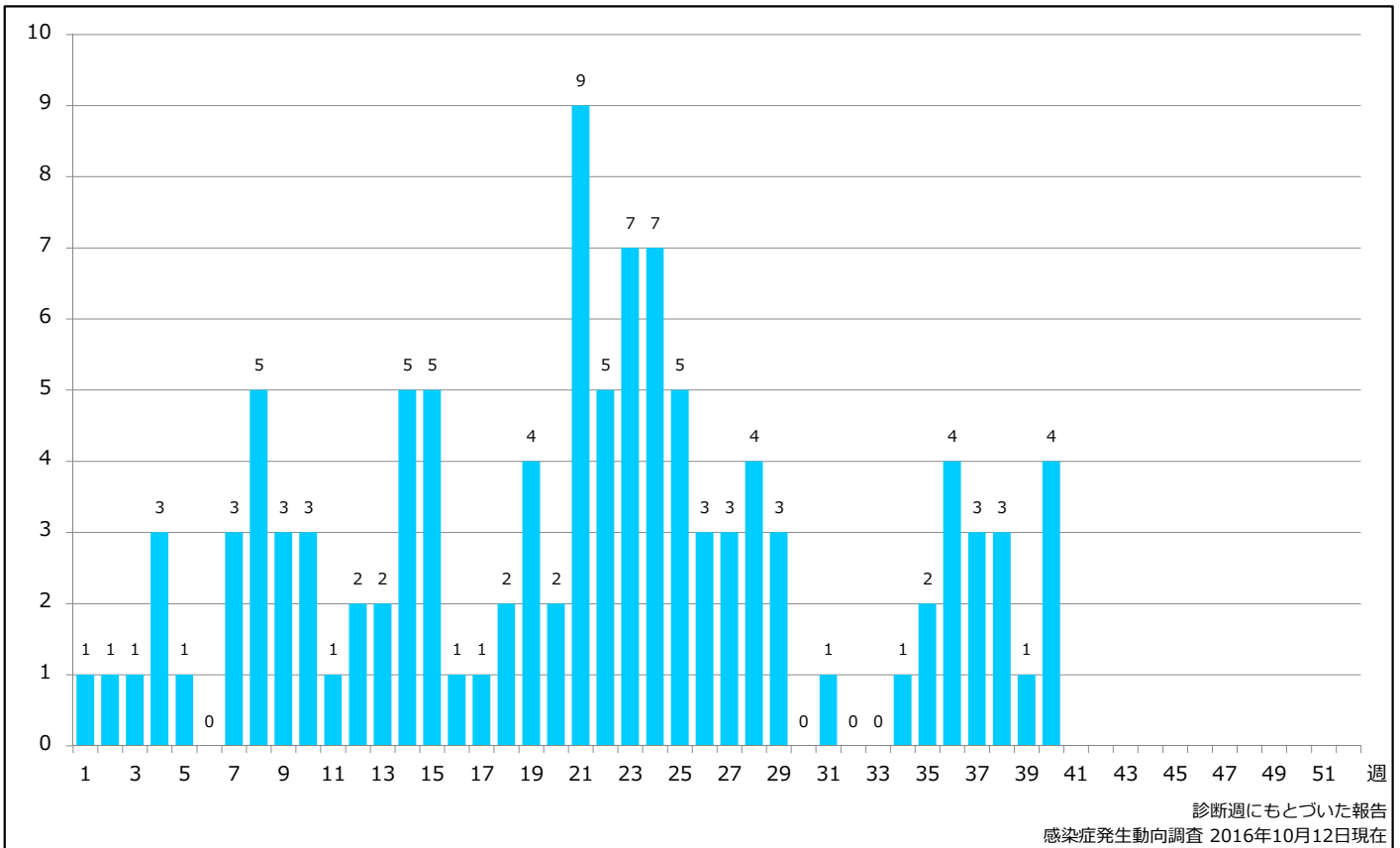
### 1. 風しん累積報告数の推移 2010~2016年 (第1~40週)

Cumulative rubella cases by week, 2010-2016 (week 1-40) (based on diagnosed week as of October 12, 2016)



### 2. 週別風しん報告数 2016年 第1~40週 (n=111)

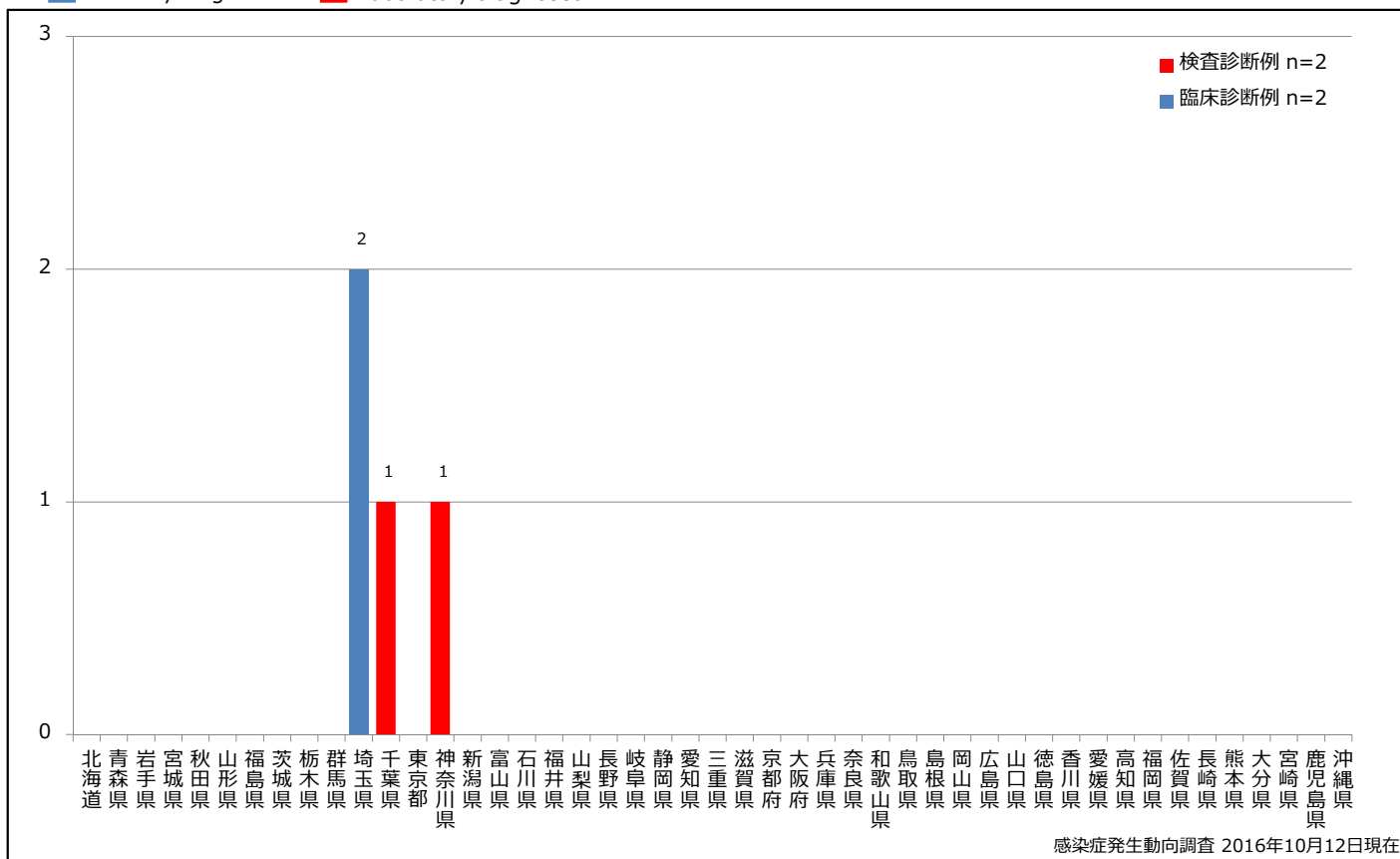
Weekly rubella cases, week 1-40, 2016 (based on diagnosed week as of October 12, 2016)



### 3. 都道府県別病型別風しん報告数 2016年 第40週 (n=4)

Reported rubella cases by prefecture and methods of diagnosis in week 40, 2016 (as of October 12, 2016)

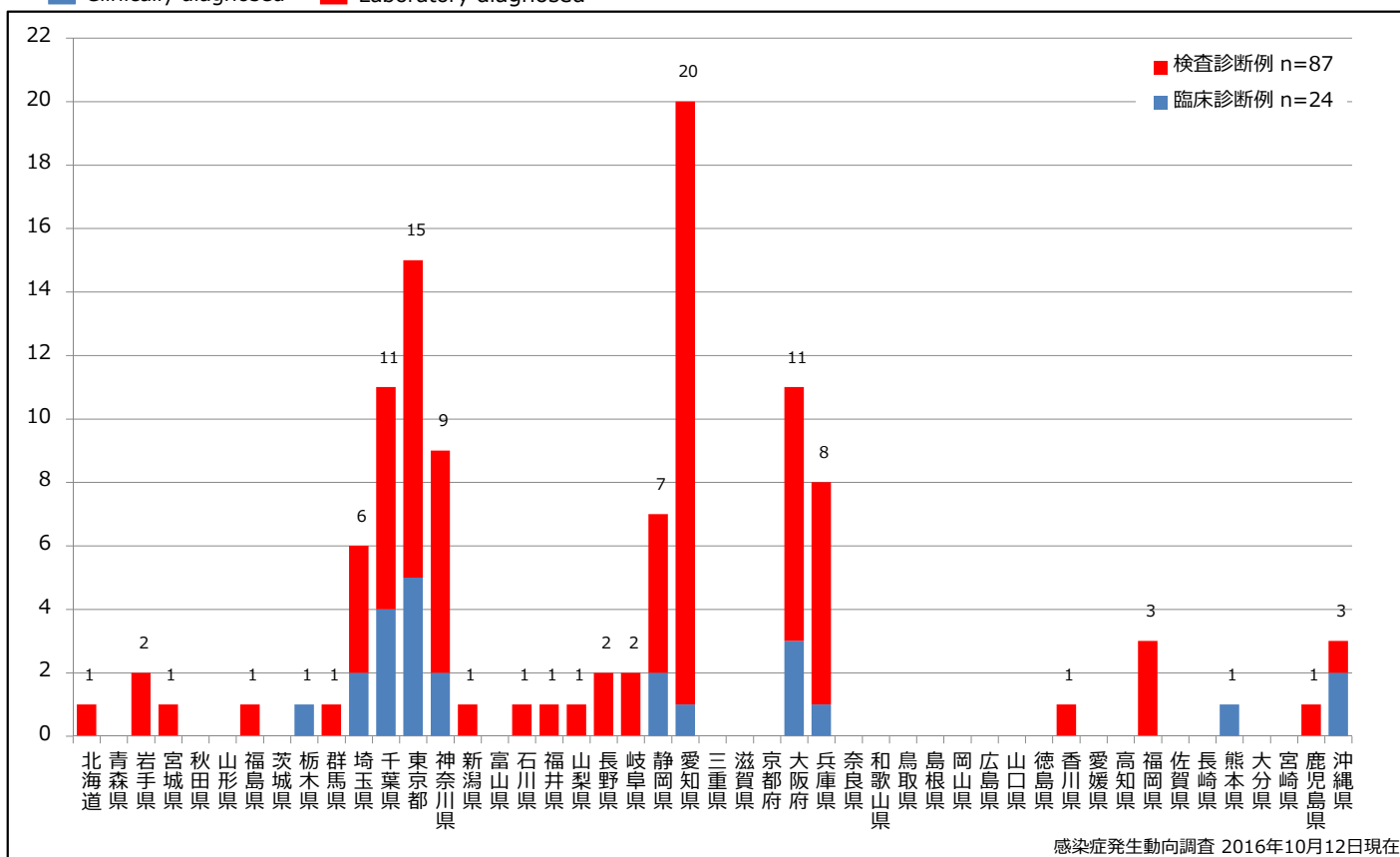
■ Clinically diagnosed ■ Laboratory diagnosed



### 4. 都道府県別病型別風しん累積報告数 2016年 第1~40週 (n=111)

Cumulative rubella cases by prefecture and methods of diagnosis, week 1-40, 2016 (as of October 12, 2016)

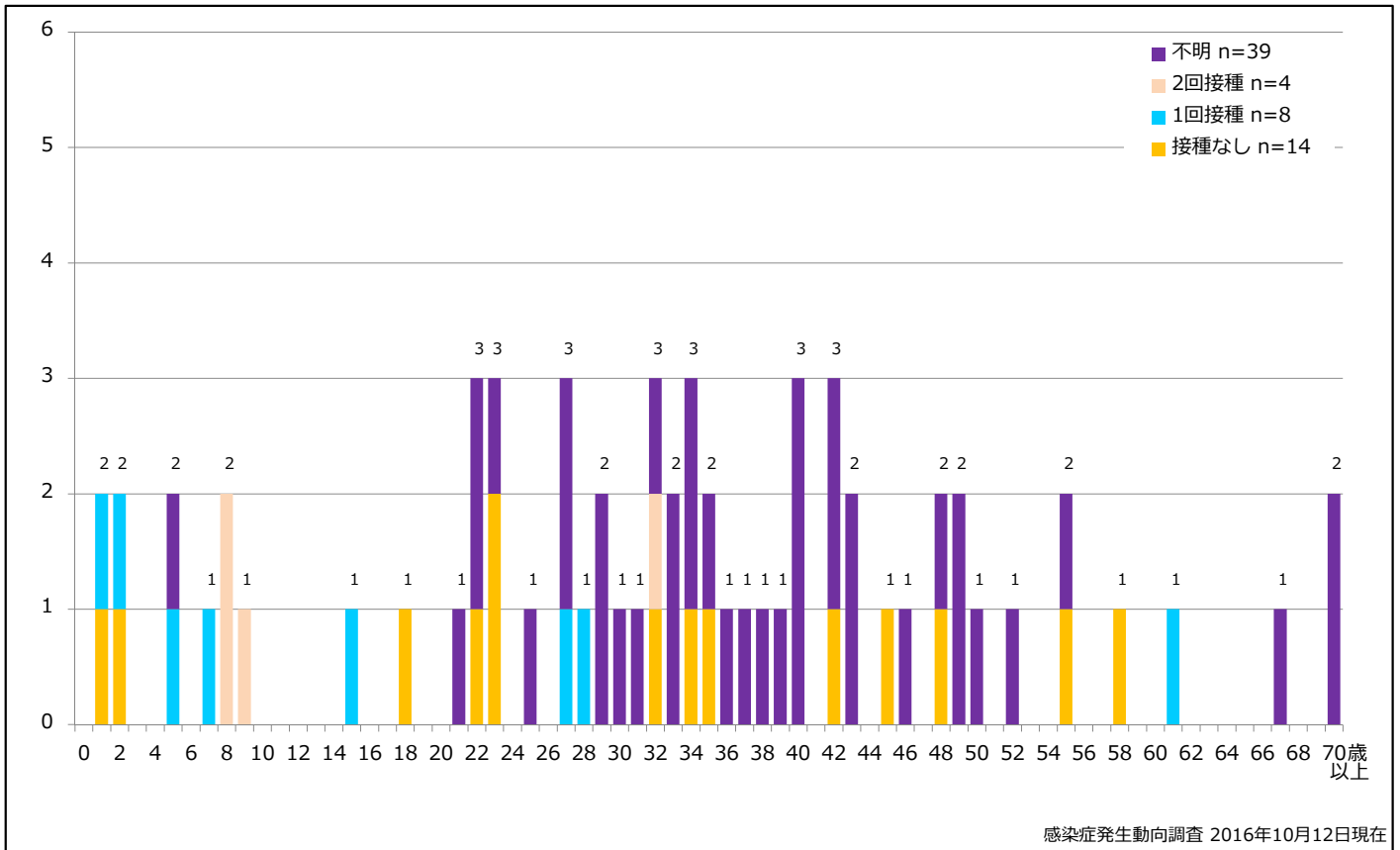
■ Clinically diagnosed ■ Laboratory diagnosed



5-1. 年齢群別接種歴別風しん累積報告数 (男性) 2016年 第1~40週 (n=65)

Cumulative rubella cases (male) by age and vaccinated status, week 1-40, 2016 (as of October 12, 2016)

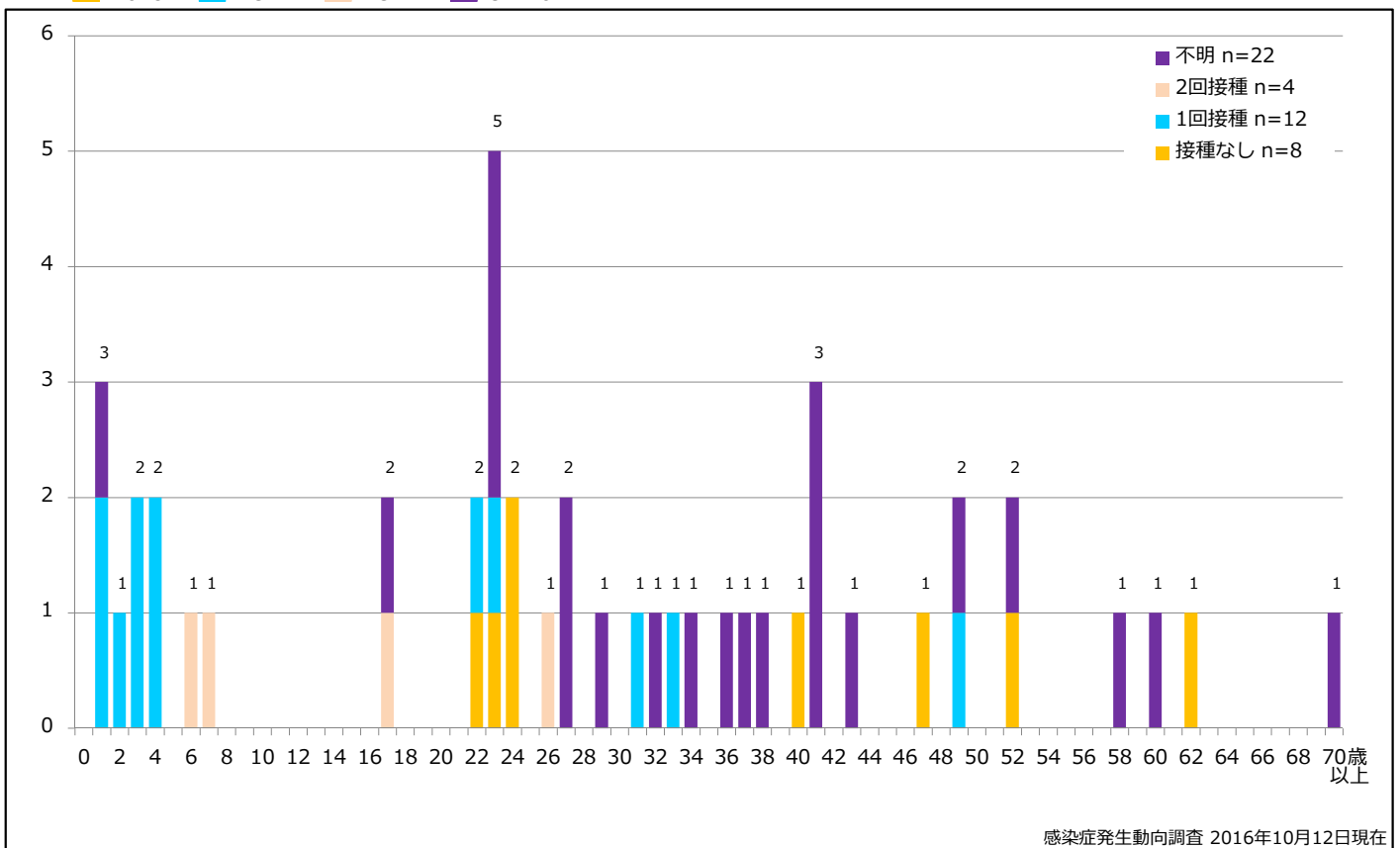
None RCV1 RCV2 Unknown



5-2. 年齢群別接種歴別風しん累積報告数 (女性) 2016年 第1~40週 (n=46)

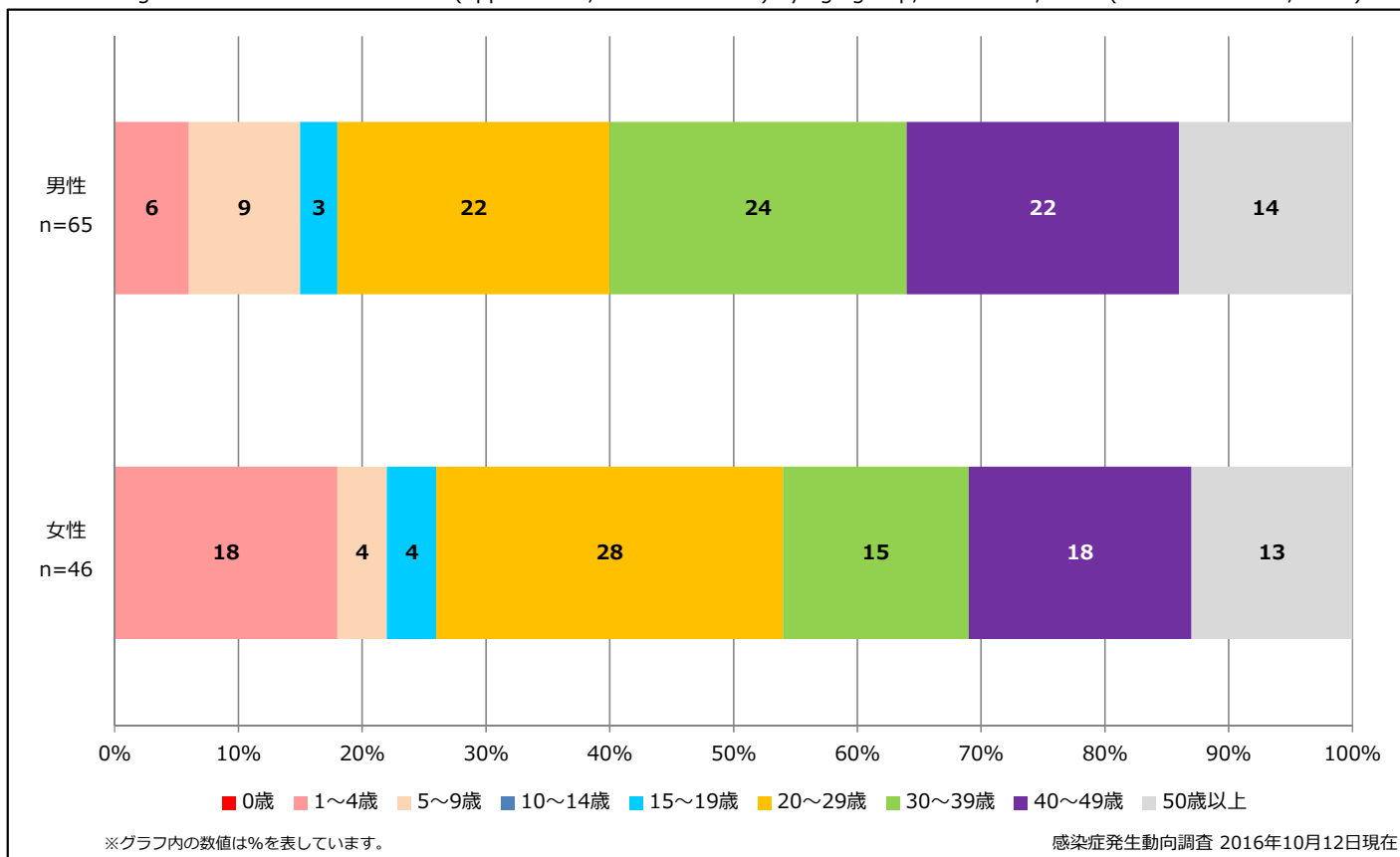
Cumulative rubella cases (female) by age and vaccinated status, week 1-40, 2016 (as of October 12, 2016)

None RCV1 RCV2 Unknown



### 6. 年齢群別風しん累積報告数割合 (男女別) 2016年 第1~40週 (n=111)

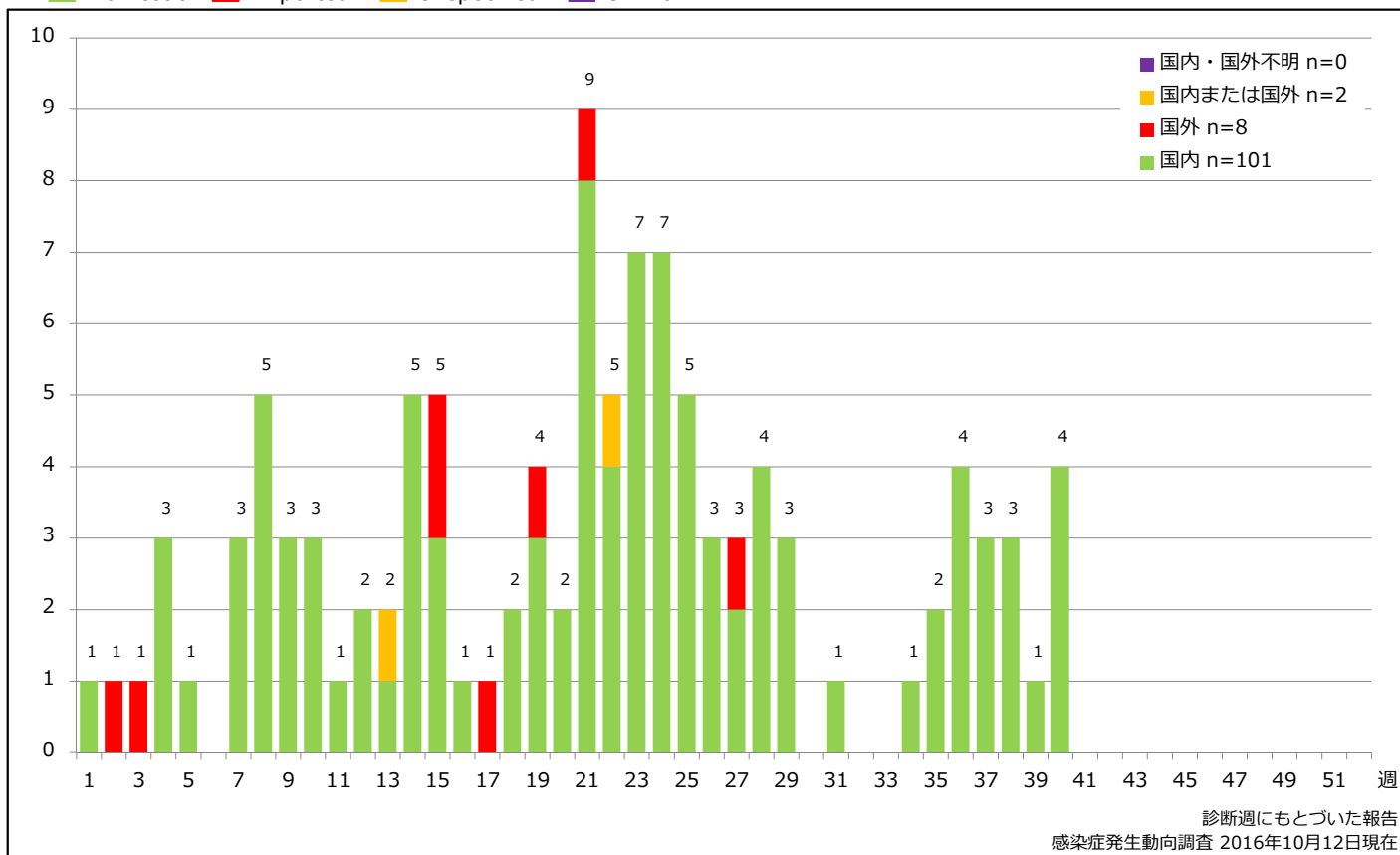
Percentage of cumulative rubella cases (upper: male, bottom: female) by age group, week 1-40, 2016 (as of October 12, 2016)



### 7. 週別推定感染地域(国内・外)別風しん報告数 2016年 第1~40週 (n=111)

Weekly rubella cases by acquired region, week 1-40, 2016 (based on diagnosed week as of October 12, 2016)

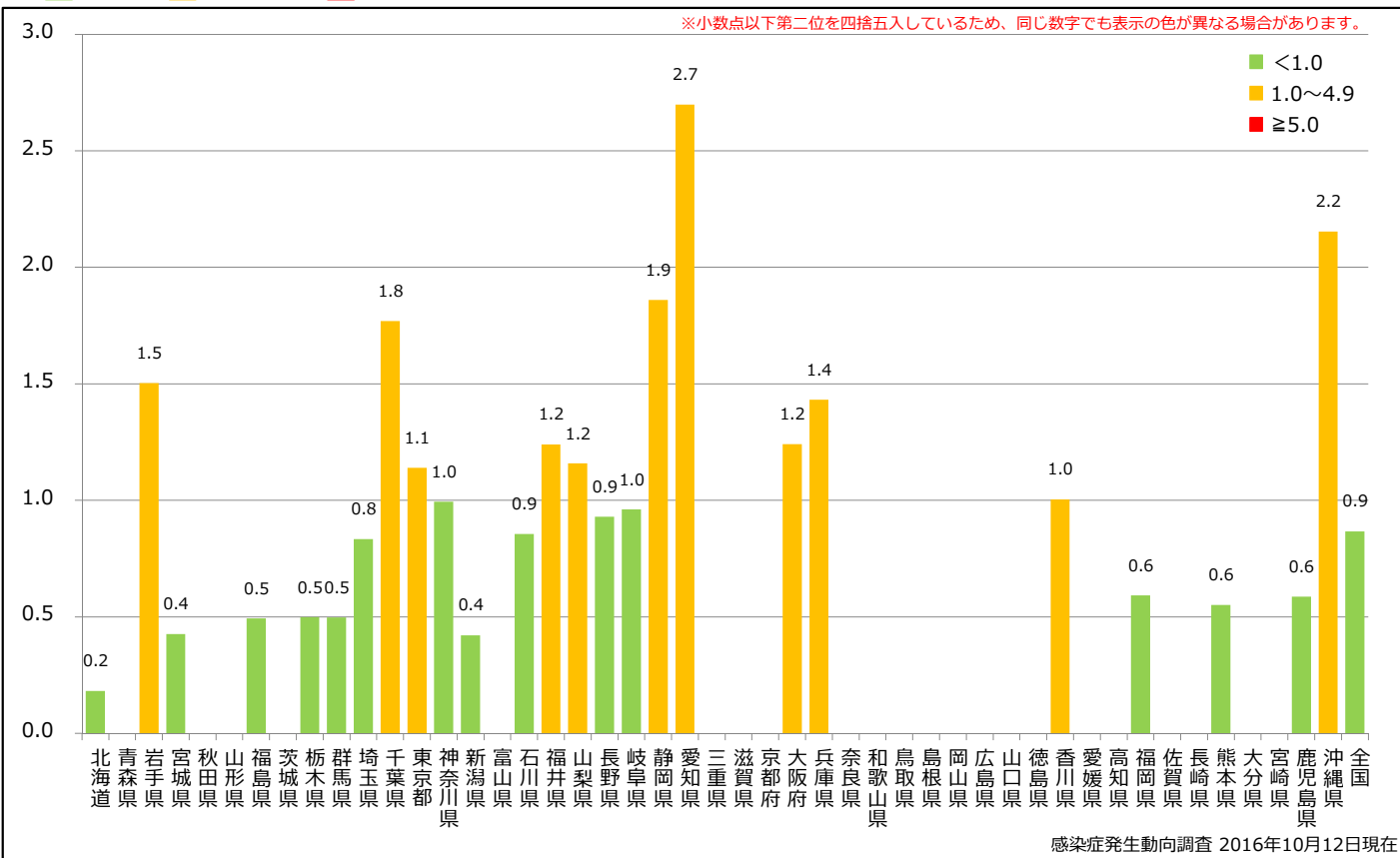
Domestic Imported Unspecified Unknown



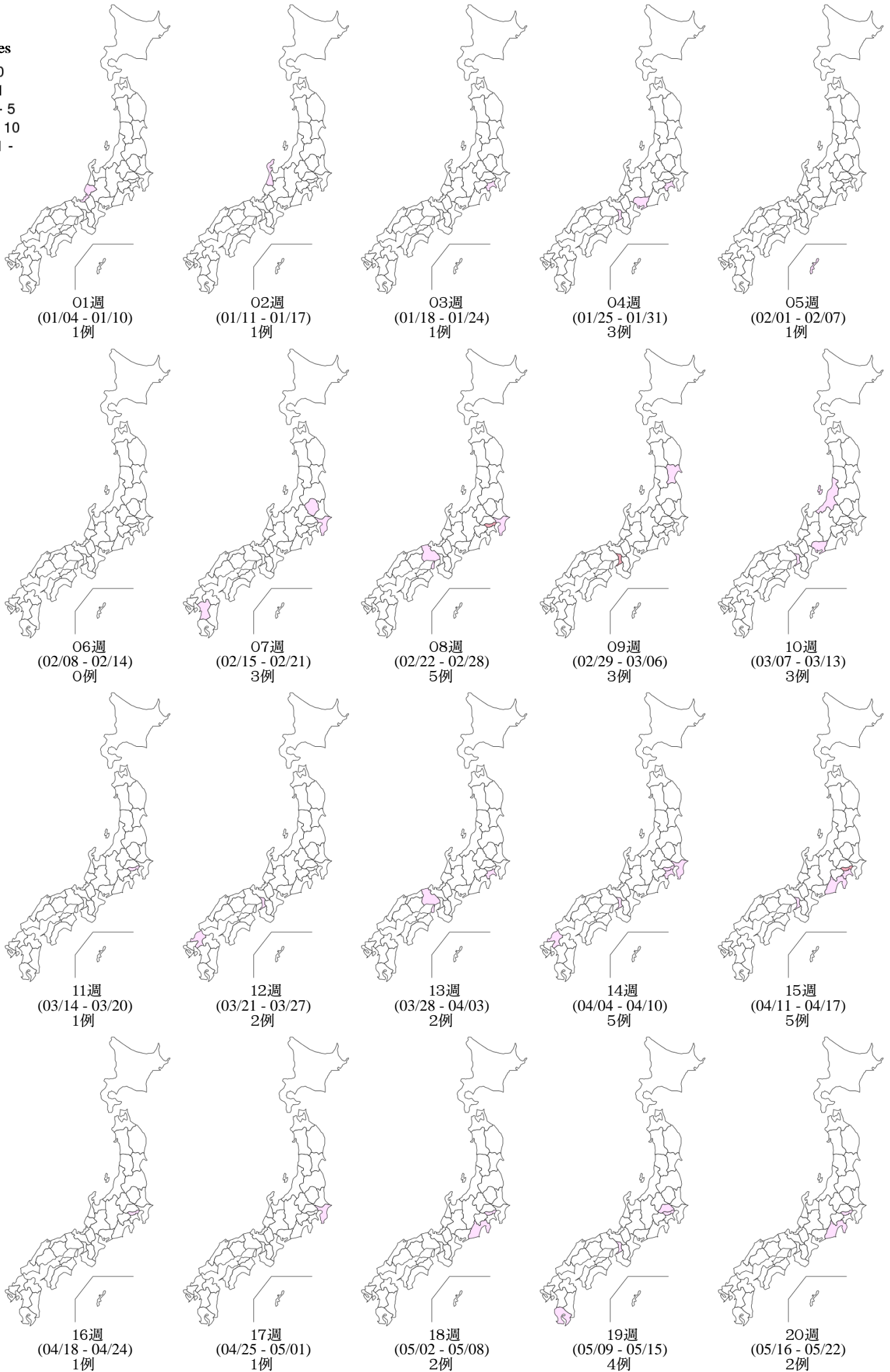
### 8. 都道府県別人口百万人あたり風しん報告数 2016年 第1~40週 (n=111)

Reported rubella cases per 1 million population by prefecture, week 1-40, 2016 (as of October 12, 2016)

■ <1.0 ■ 1.0~4.9 ■ ≥5.0



Weekly rubella cases from week 01 to week 40, 2016 (based on diagnosed week as of October 12, 2016)



Weekly rubella cases from week 01 to week 40, 2016 (based on diagnosed week as of October 12, 2016)

