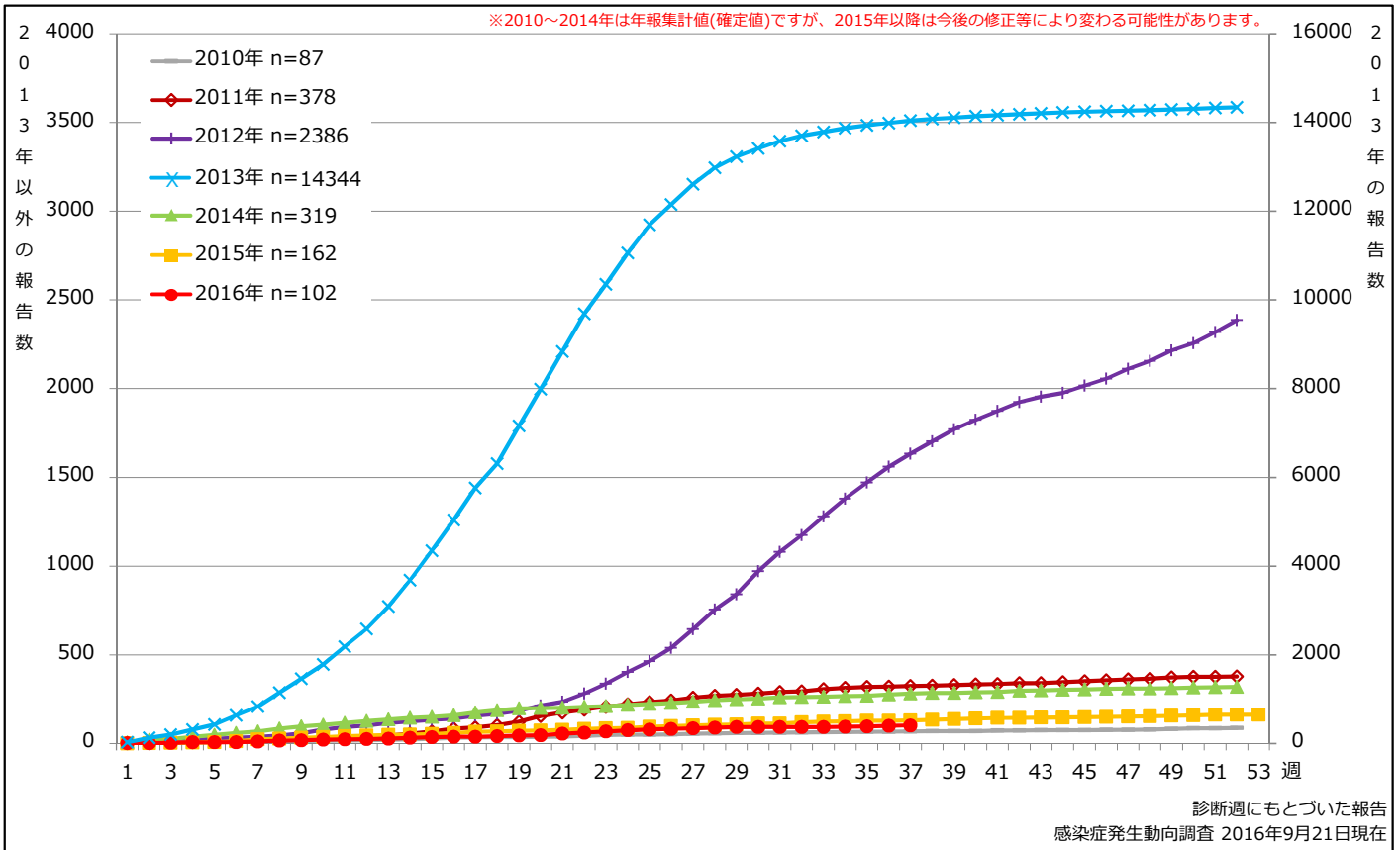


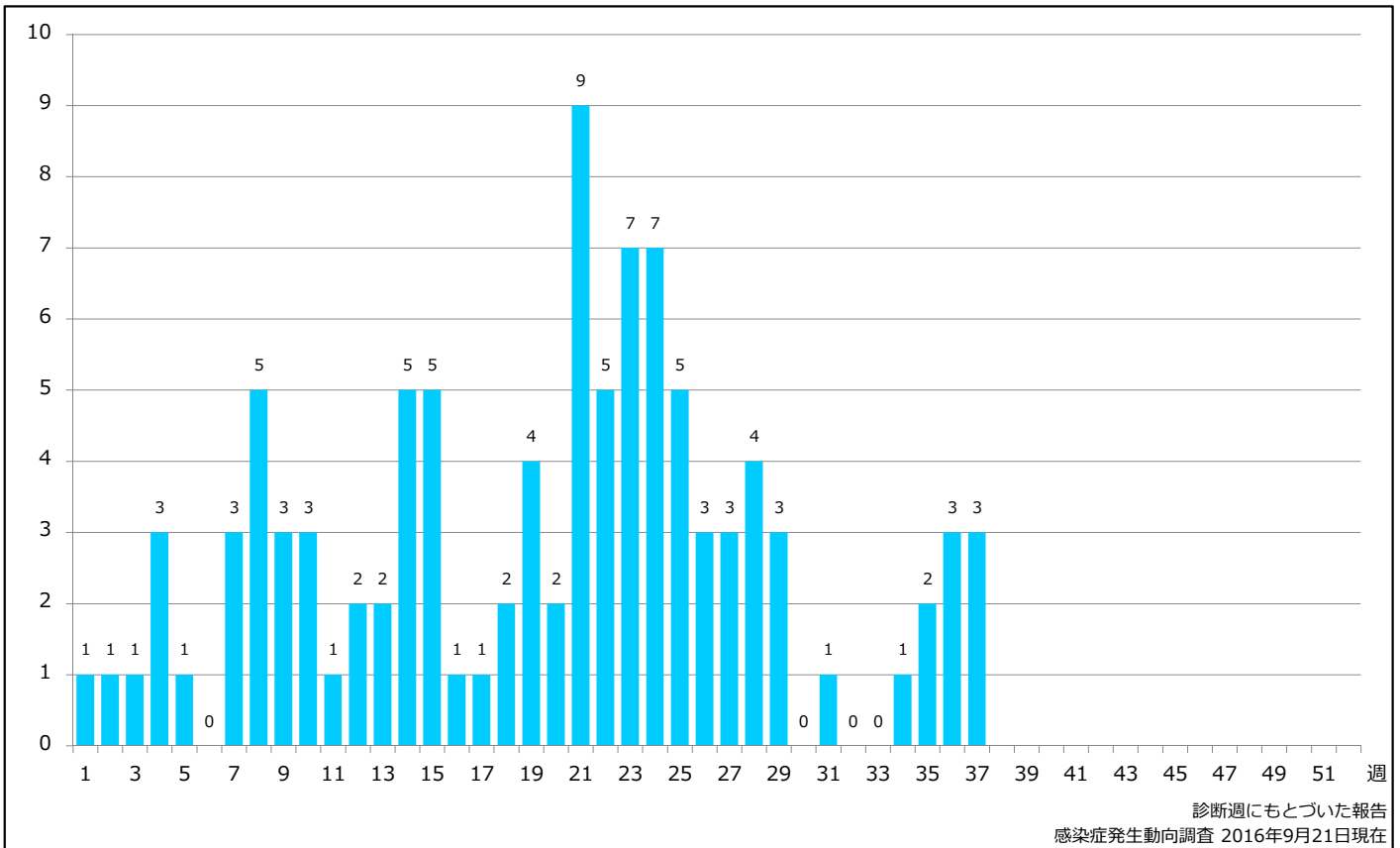
### 1. 風しん累積報告数の推移 2010~2016年 (第1~37週)

Cumulative rubella cases by week, 2010-2016 (week 1-37) (based on diagnosed week as of September 21, 2016)



### 2. 週別風しん報告数 2016年 第1~37週 (n=102)

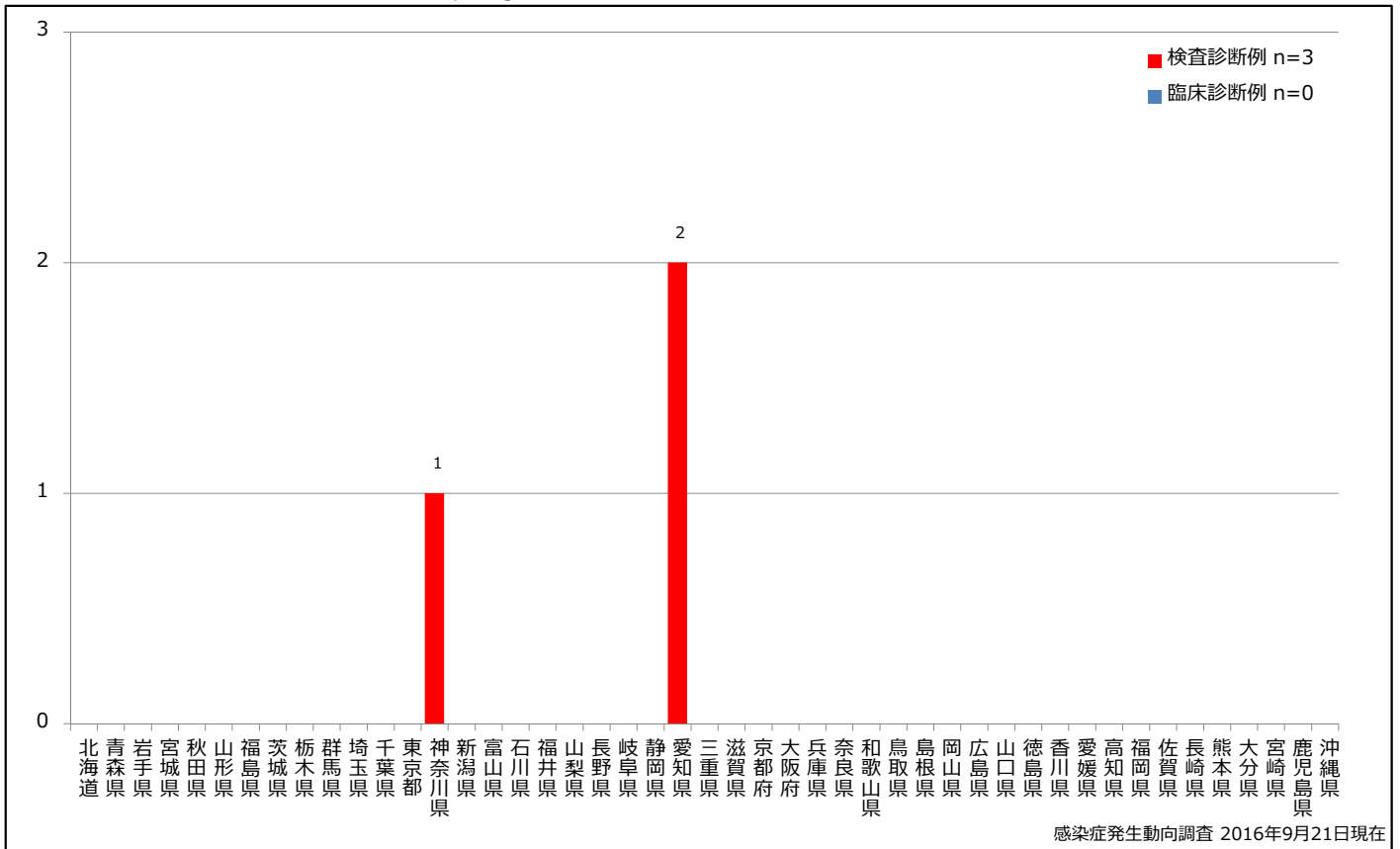
Weekly rubella cases, week 1-37, 2016 (based on diagnosed week as of September 21, 2016)



### 3. 都道府県別病型別風しん報告数 2016年 第37週 (n=3)

Reported rubella cases by prefecture and methods of diagnosis in week 37, 2016 (as of September 21, 2016)

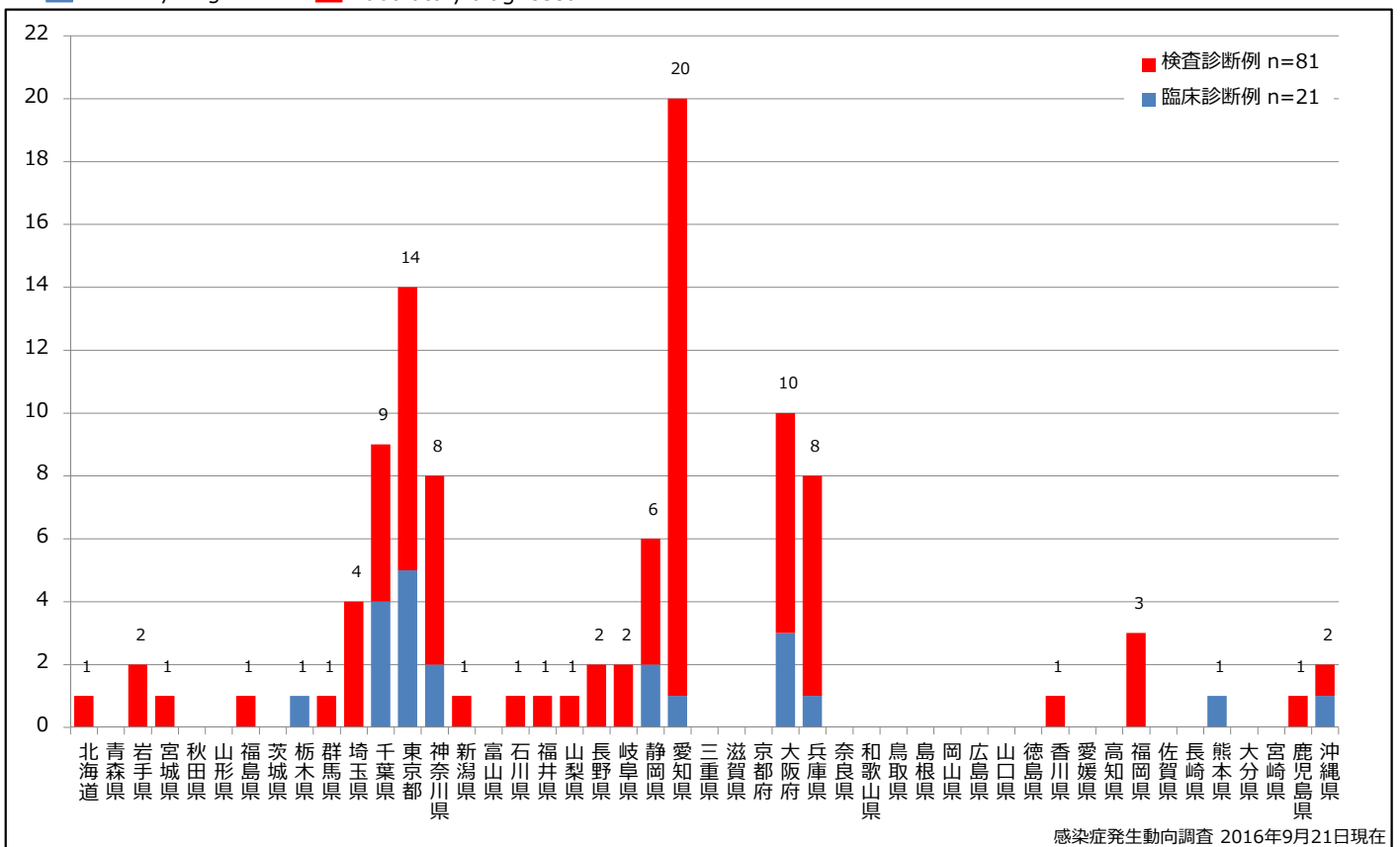
■ Clinically diagnosed ■ Laboratory diagnosed



### 4. 都道府県別病型別風しん累積報告数 2016年 第1~37週 (n=102)

Cumulative rubella cases by prefecture and methods of diagnosis, week 1-37, 2016 (as of September 21, 2016)

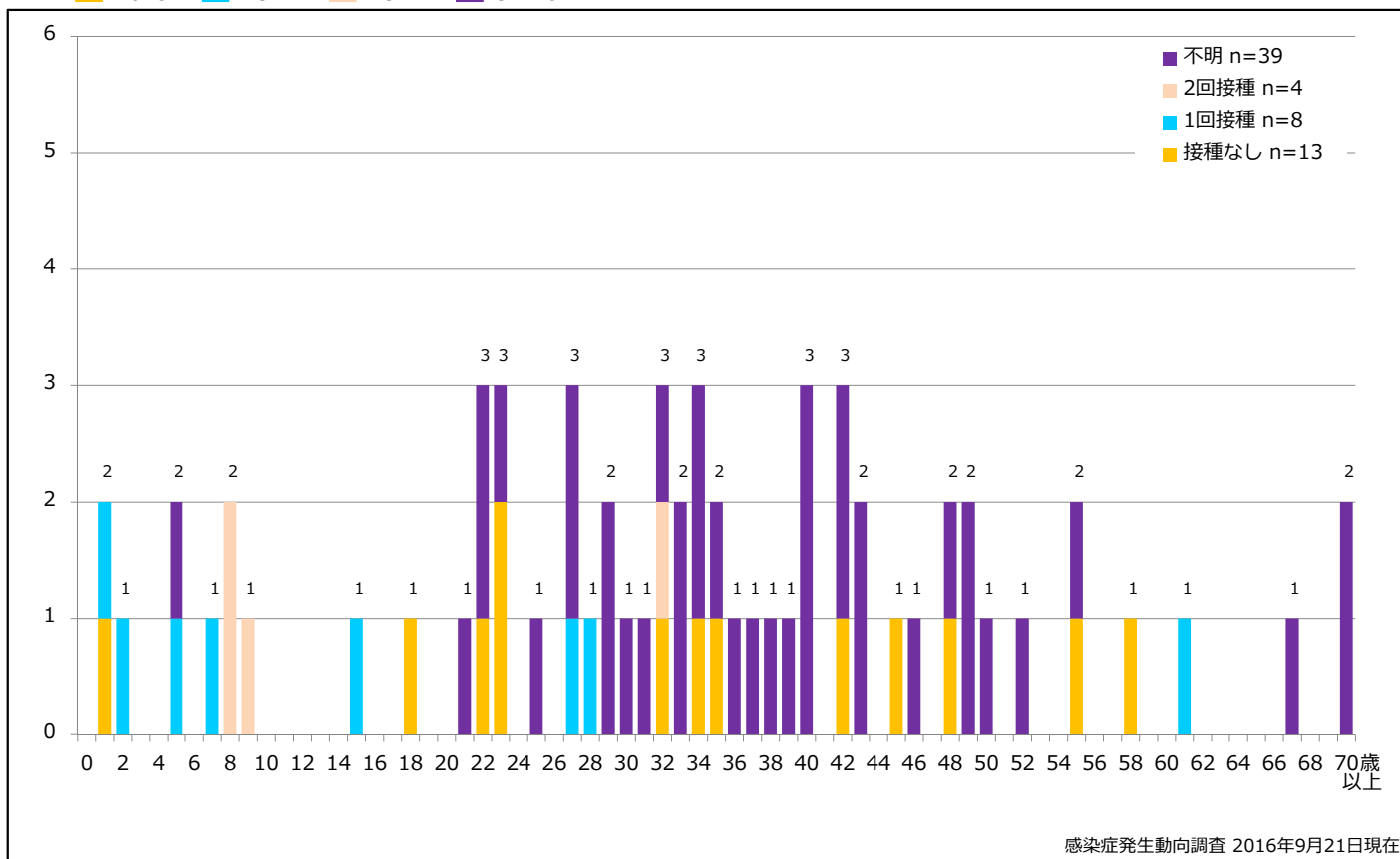
■ Clinically diagnosed ■ Laboratory diagnosed



### 5-1. 年齢群別接種歴別風しん累積報告数 (男性) 2016年 第1~37週 (n=64)

Cumulative rubella cases (male) by age and vaccinated status, week 1-37, 2016 (as of September 21, 2016)

None RCV1 RCV2 Unknown

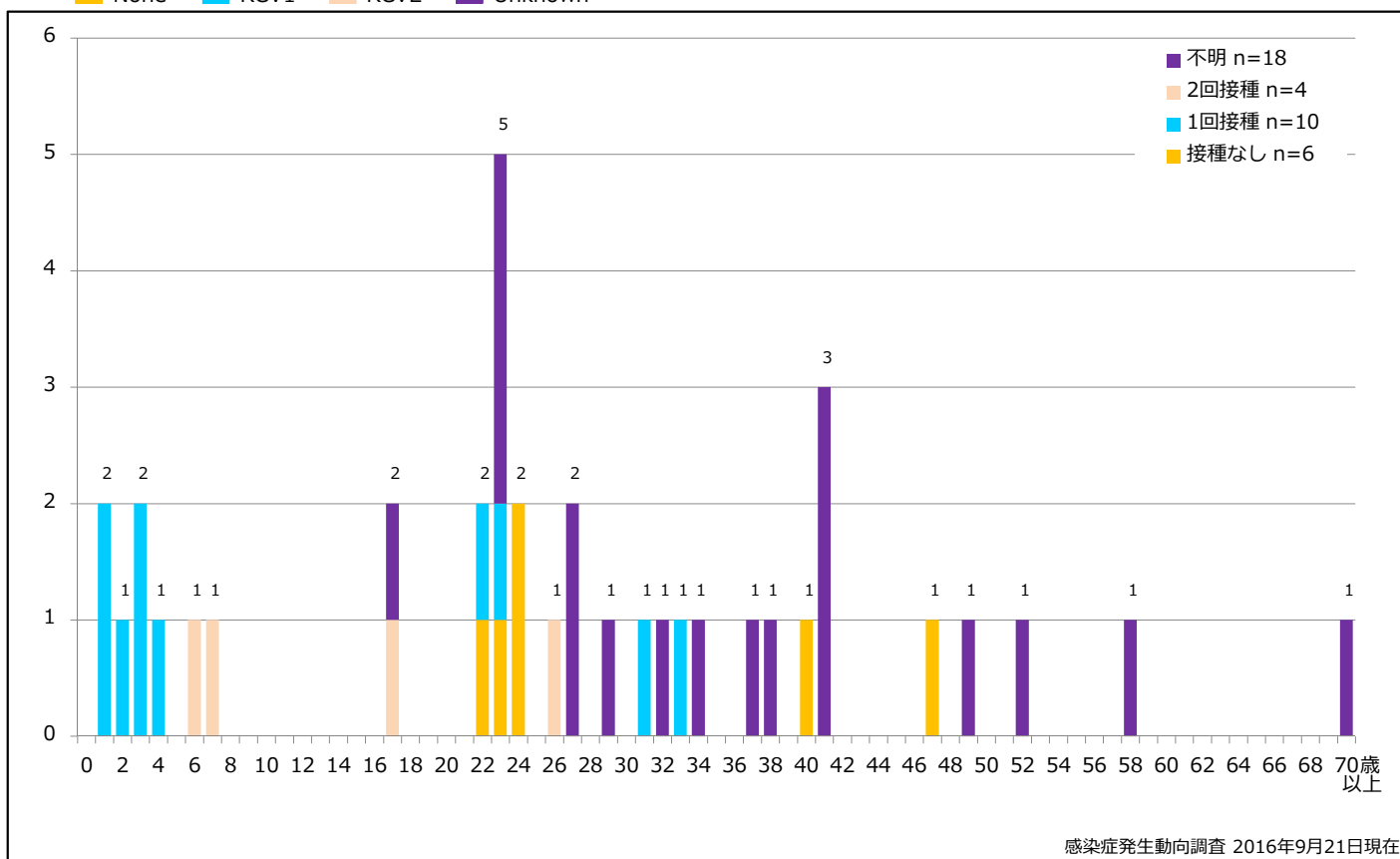


感染症発生動向調査 2016年9月21日現在

### 5-2. 年齢群別接種歴別風しん累積報告数 (女性) 2016年 第1~37週 (n=38)

Cumulative rubella cases (female) by age and vaccinated status, week 1-37, 2016 (as of September 21, 2016)

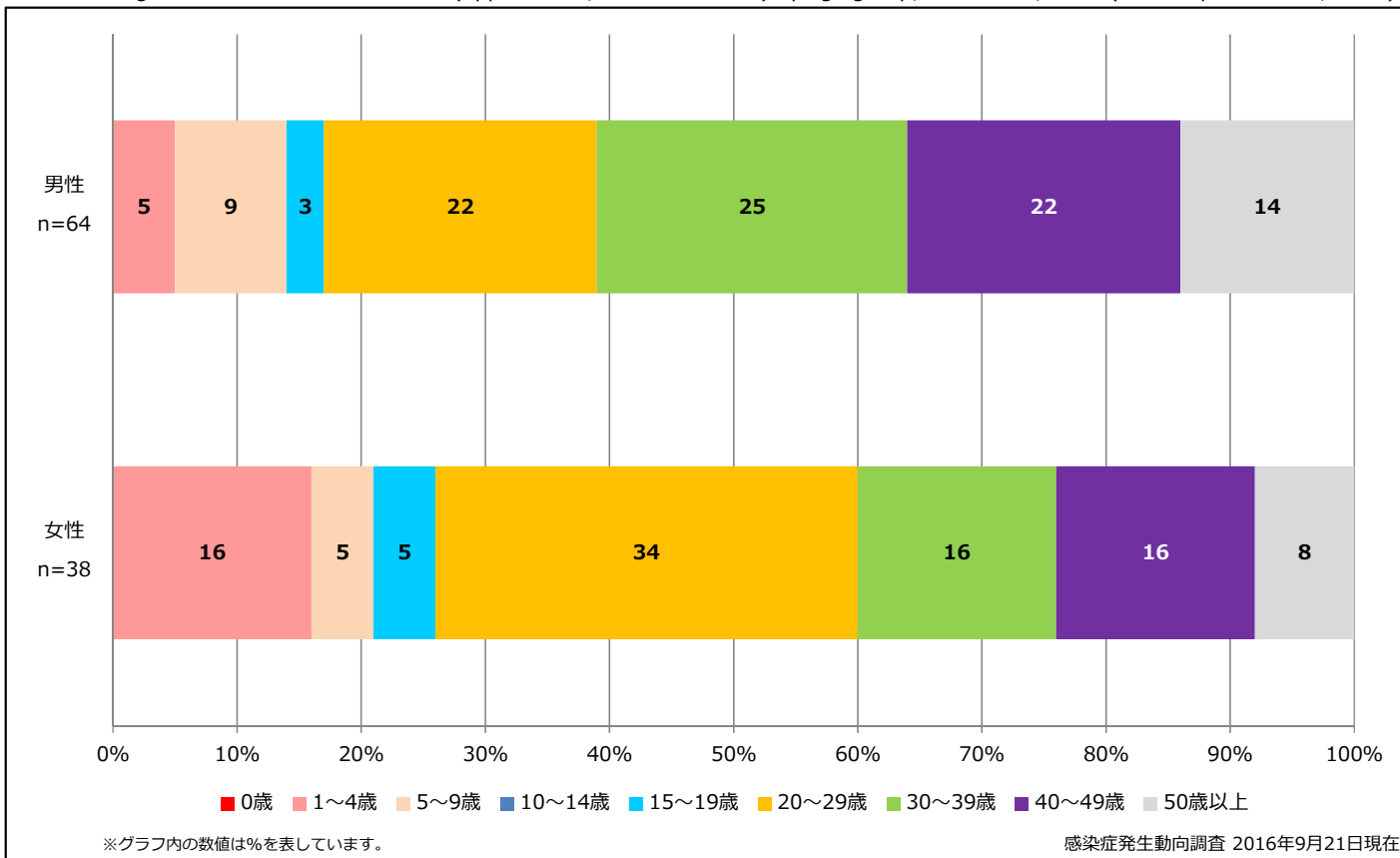
None RCV1 RCV2 Unknown



感染症発生動向調査 2016年9月21日現在

### 6. 年齢群別風しん累積報告数割合 (男女別) 2016年 第1~37週 (n=102)

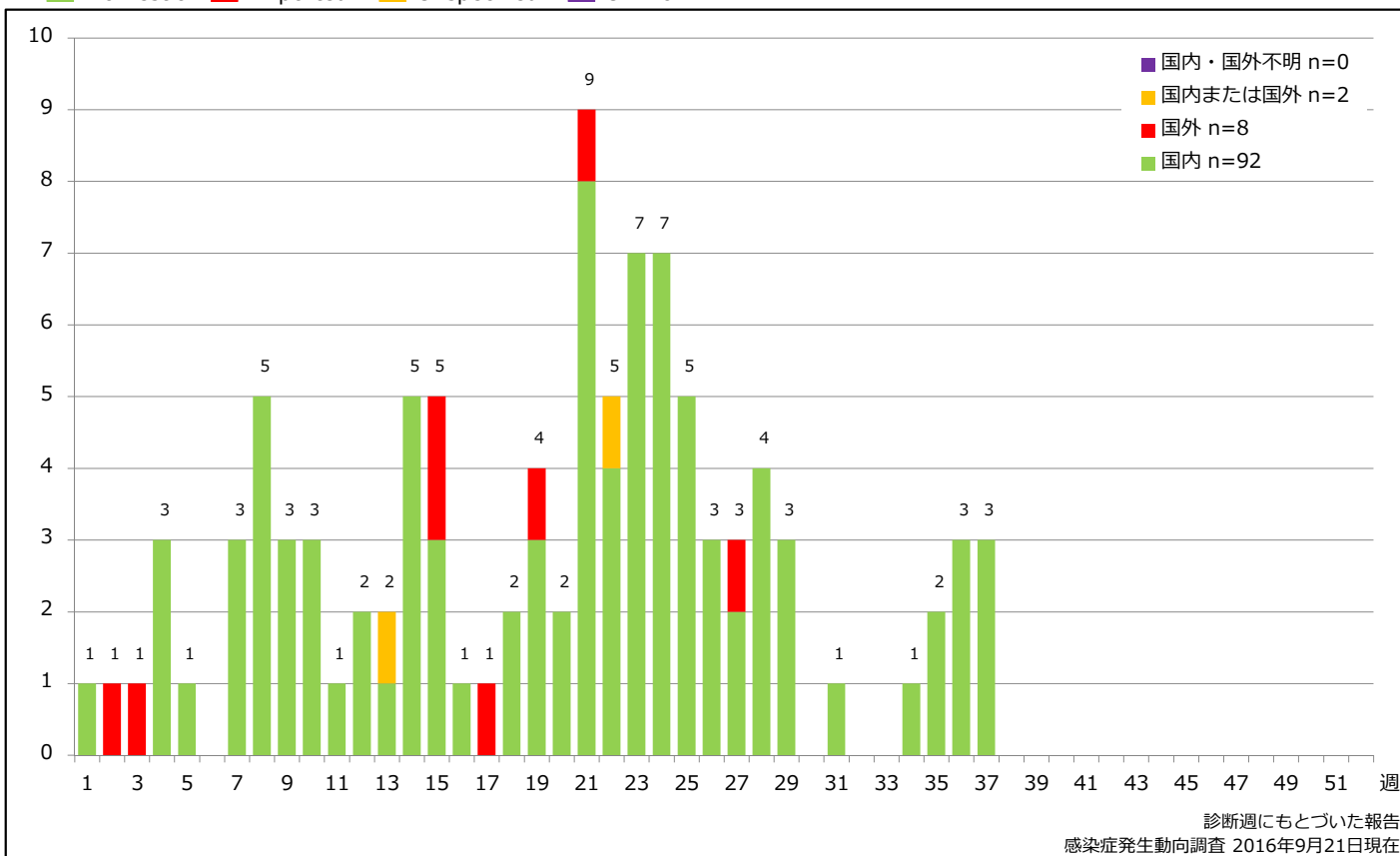
Percentage of cumulative rubella cases (upper: male, bottom: female) by age group, week 1-37, 2016 (as of September 21, 2016)



### 7. 週別推定感染地域(国内・外)別風しん報告数 2016年 第1~37週 (n=102)

Weekly rubella cases by acquired region, week 1-37, 2016 (based on diagnosed week as of September 21, 2016)

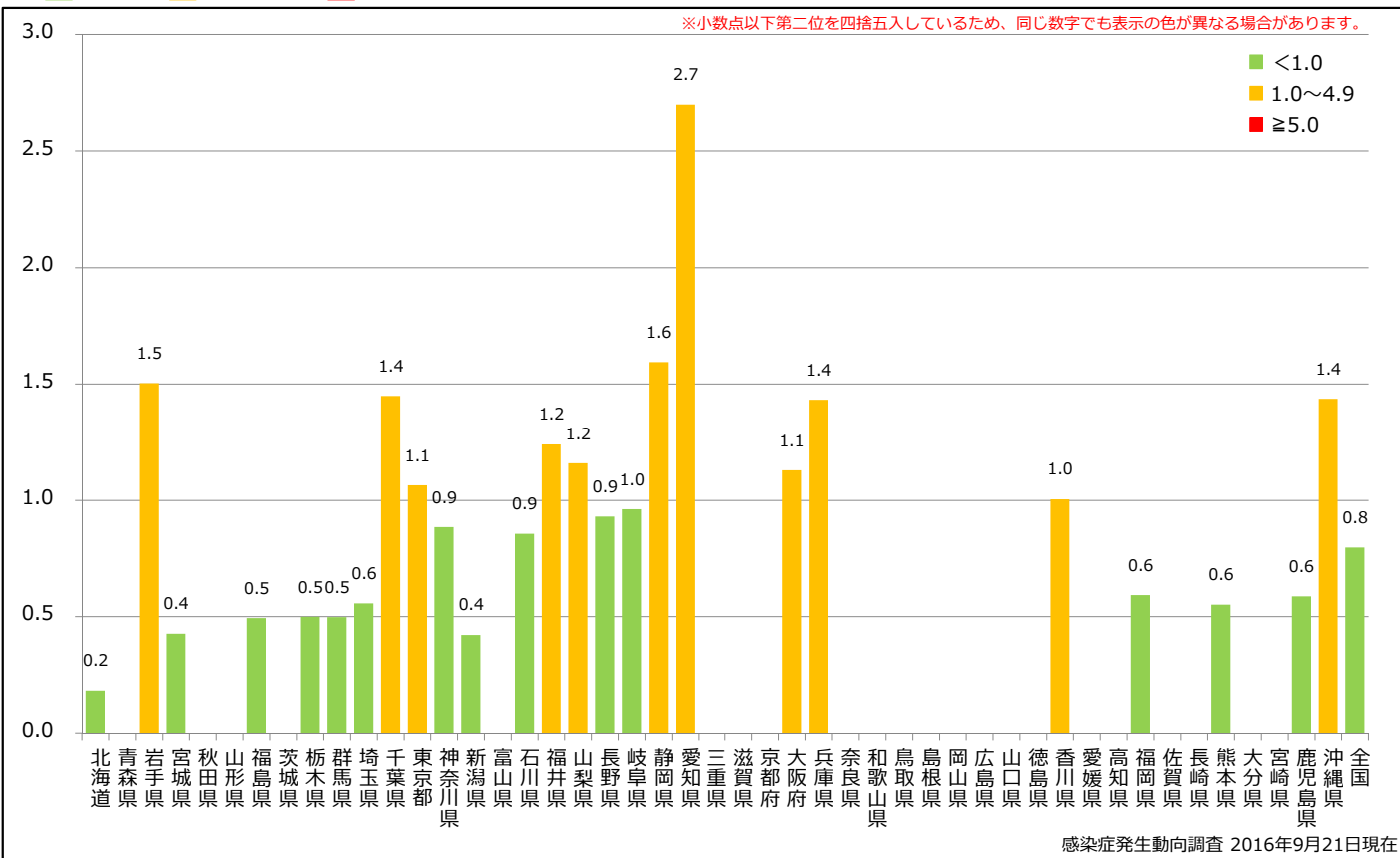
Domestic (Green), Imported (Red), Unspecified (Yellow), Unknown (Purple)



### 8. 都道府県別人口百万人あたり風しん報告数 2016年 第1~37週 (n=102)

Reported rubella cases per 1 million population by prefecture, week 1-37, 2016 (as of September 21, 2016)

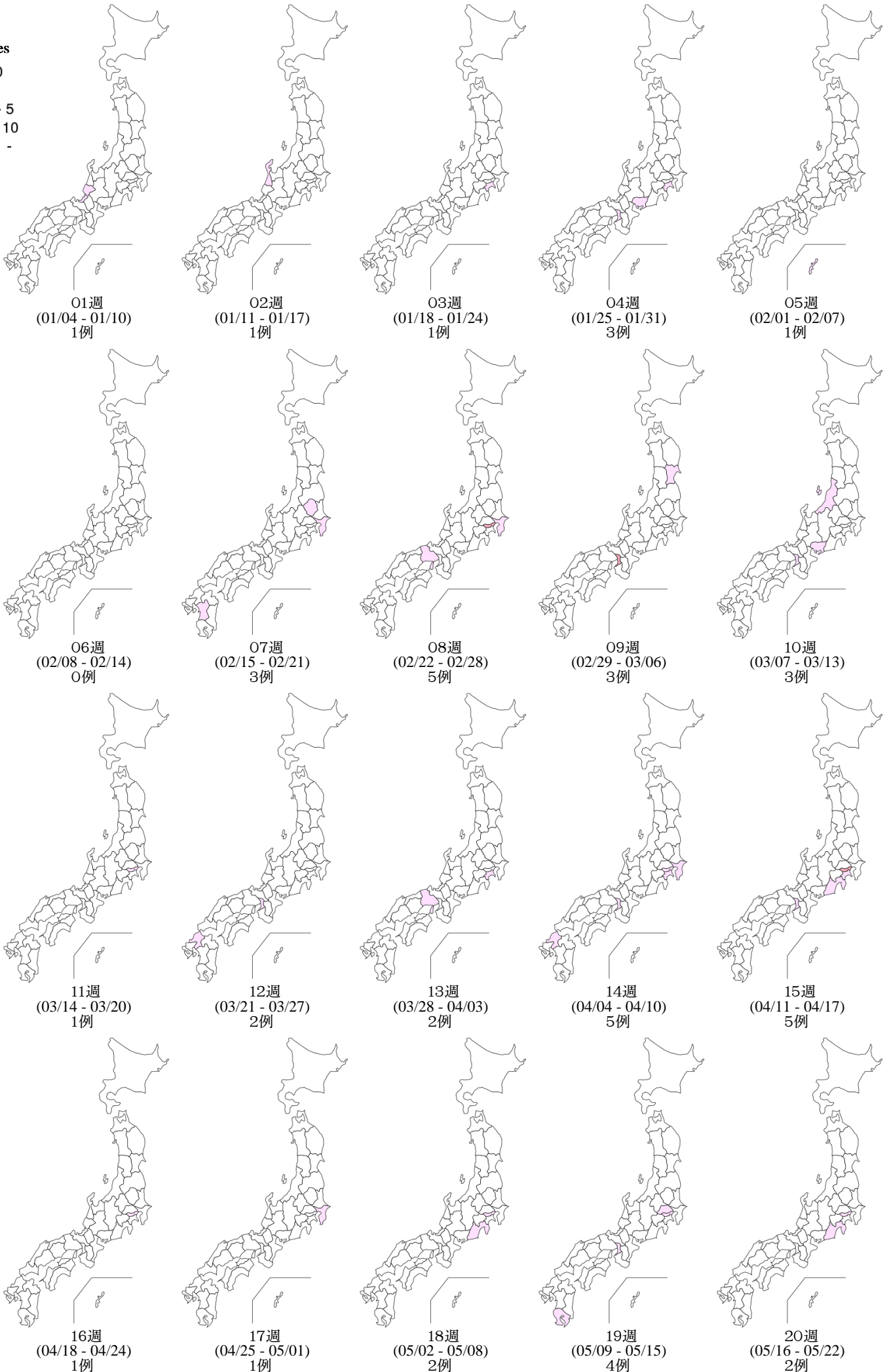
■ <1.0 ■ 1.0~4.9 ■ ≥5.0



9. 都道府県別風しん週別報告状況 2016年 第1~37週 感染症発生動向調査

2016年09月21日現在

Weekly rubella cases from week 01 to week 37, 2016 (based on diagnosed week as of September 21, 2016)



9. 都道府県別風しん週別報告状況 2016年 第1~37週 感染症発生動向調査

2016年09月21日現在

Weekly rubella cases from week 01 to week 37, 2016 (based on diagnosed week as of September 21, 2016)

報告数  
No. of cases

