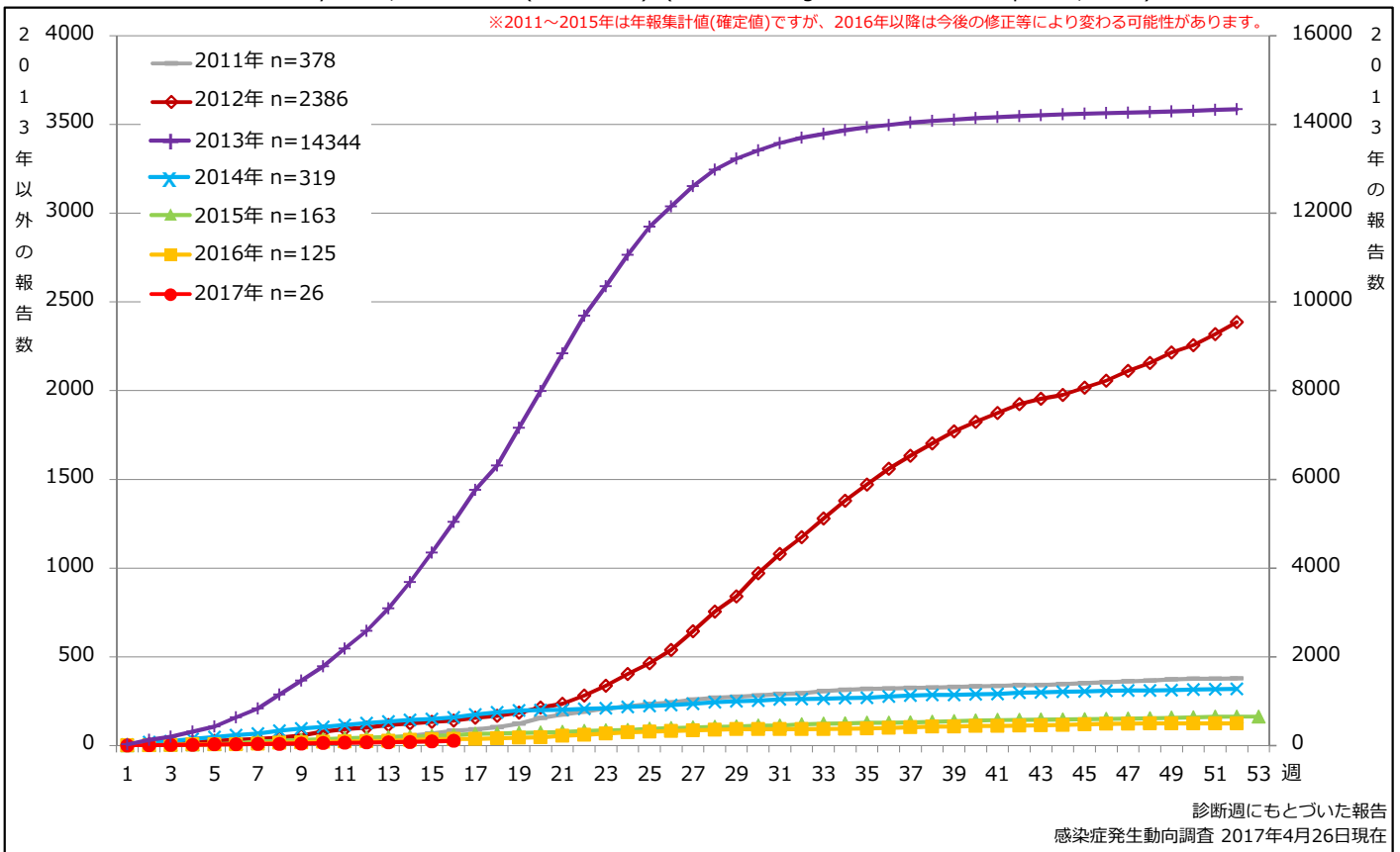


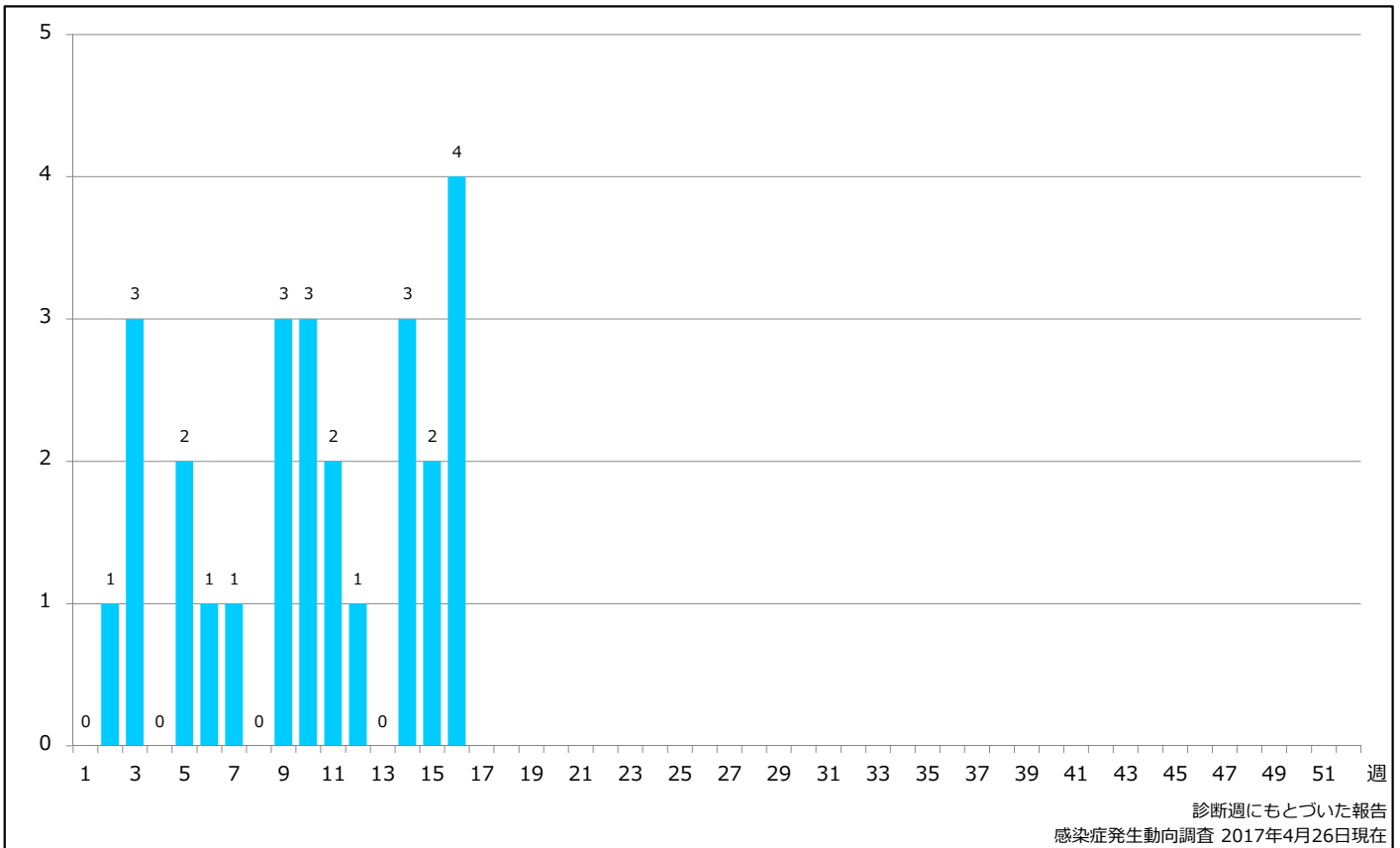
1. 風しん累積報告数の推移 2011~2017年 (第1~16週)

Cumulative rubella cases by week, 2011-2017 (week 1-16) (based on diagnosed week as of April 26, 2017)



2. 週別風しん報告数 2017年 第1~16週 (n=26)

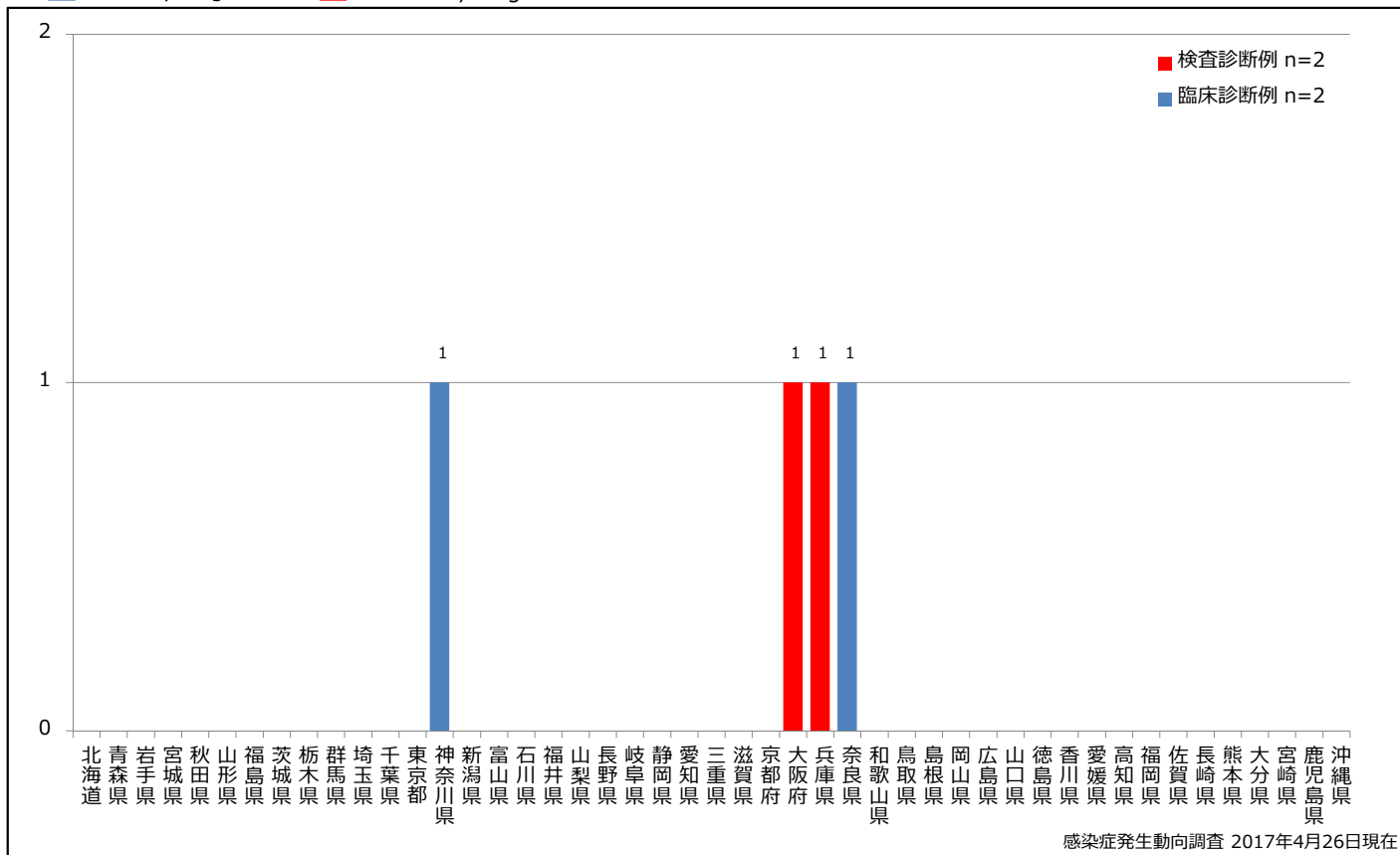
Weekly rubella cases, week 1-16, 2017 (based on diagnosed week as of April 26, 2017)



3. 都道府県別病型別風しん報告数 2017年 第16週 (n=4)

Reported rubella cases by prefecture and methods of diagnosis in week 16, 2017 (as of April 26, 2017)

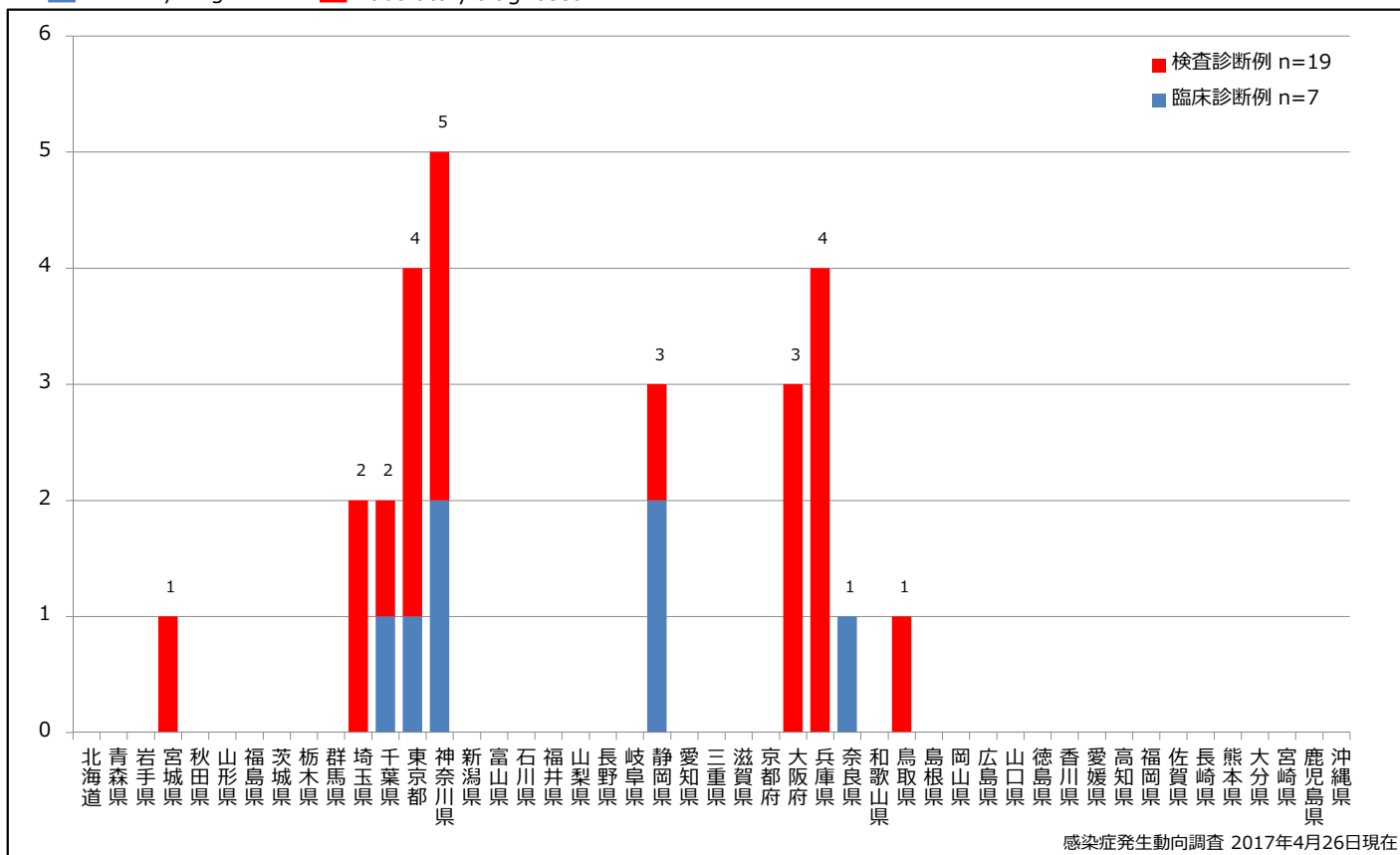
■ Clinically diagnosed ■ Laboratory diagnosed



4. 都道府県別病型別風しん累積報告数 2017年 第1~16週 (n=26)

Cumulative rubella cases by prefecture and methods of diagnosis, week 1-16, 2017 (as of April 26, 2017)

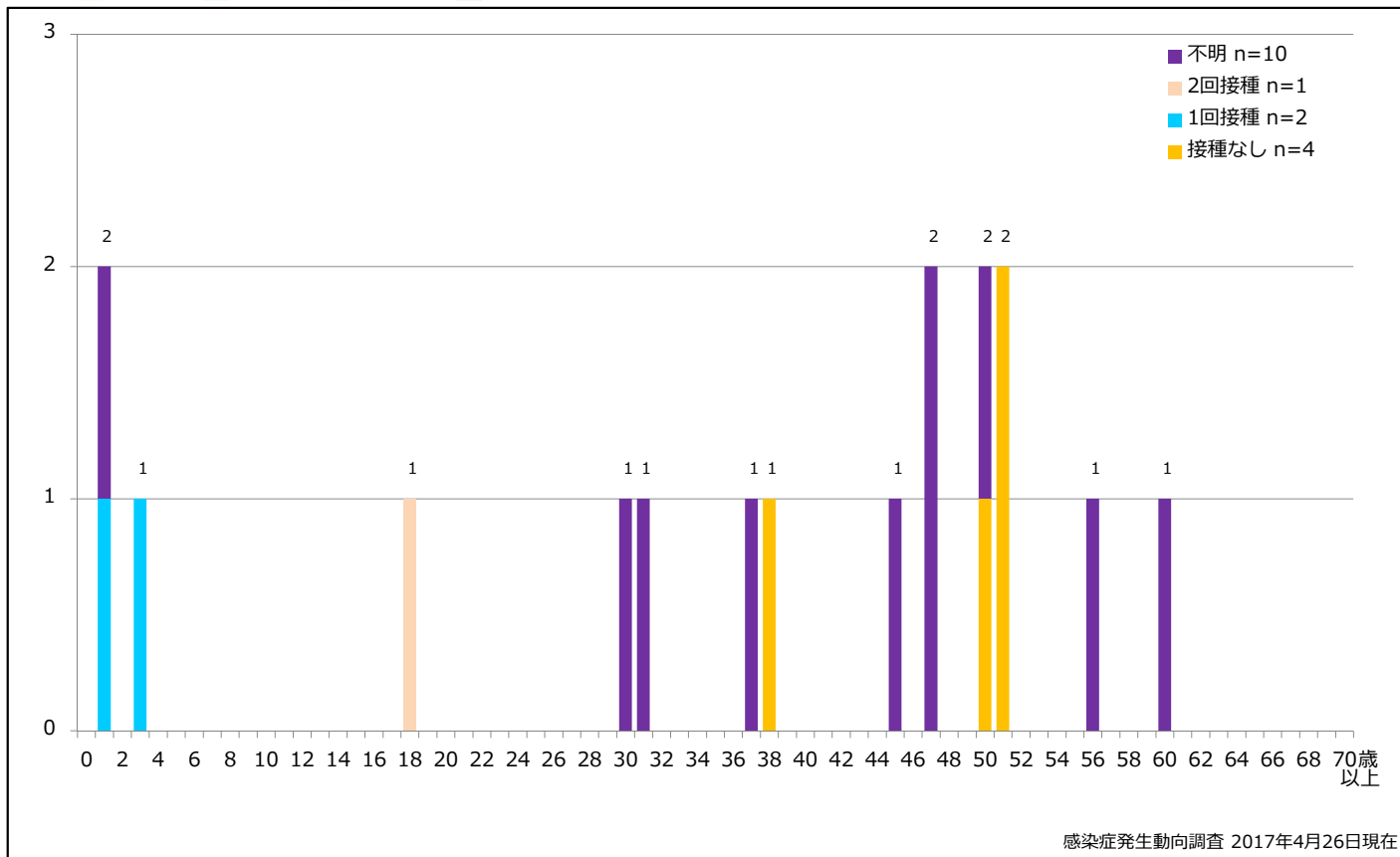
■ Clinically diagnosed ■ Laboratory diagnosed



5-1. 年齢群別接種歴別風しん累積報告数 (男性) 2017年 第1~16週 (n=17)

Cumulative rubella cases (male) by age and vaccinated status, week 1-16, 2017 (as of April 26, 2017)

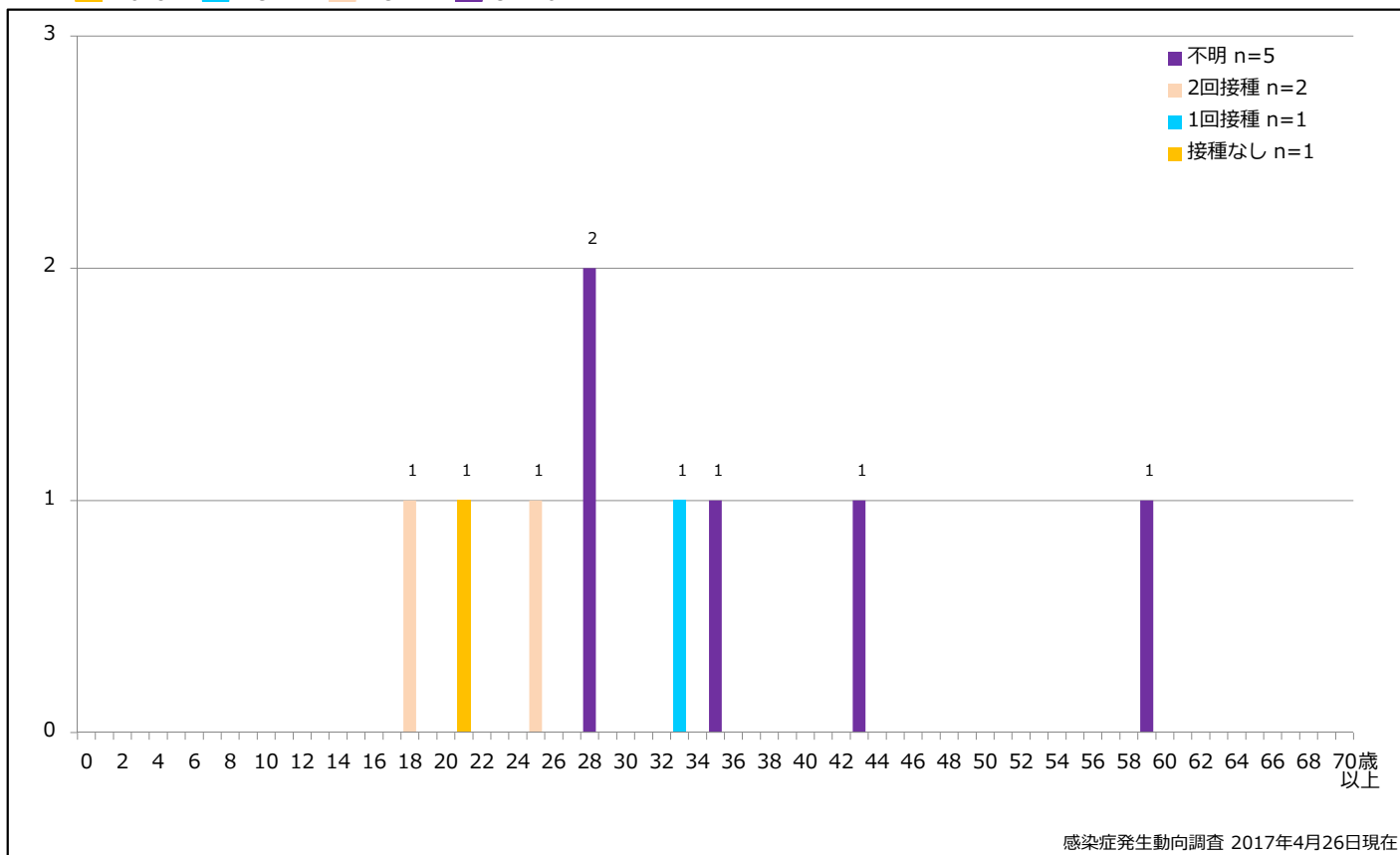
None RCV1 RCV2 Unknown



5-2. 年齢群別接種歴別風しん累積報告数 (女性) 2017年 第1~16週 (n=9)

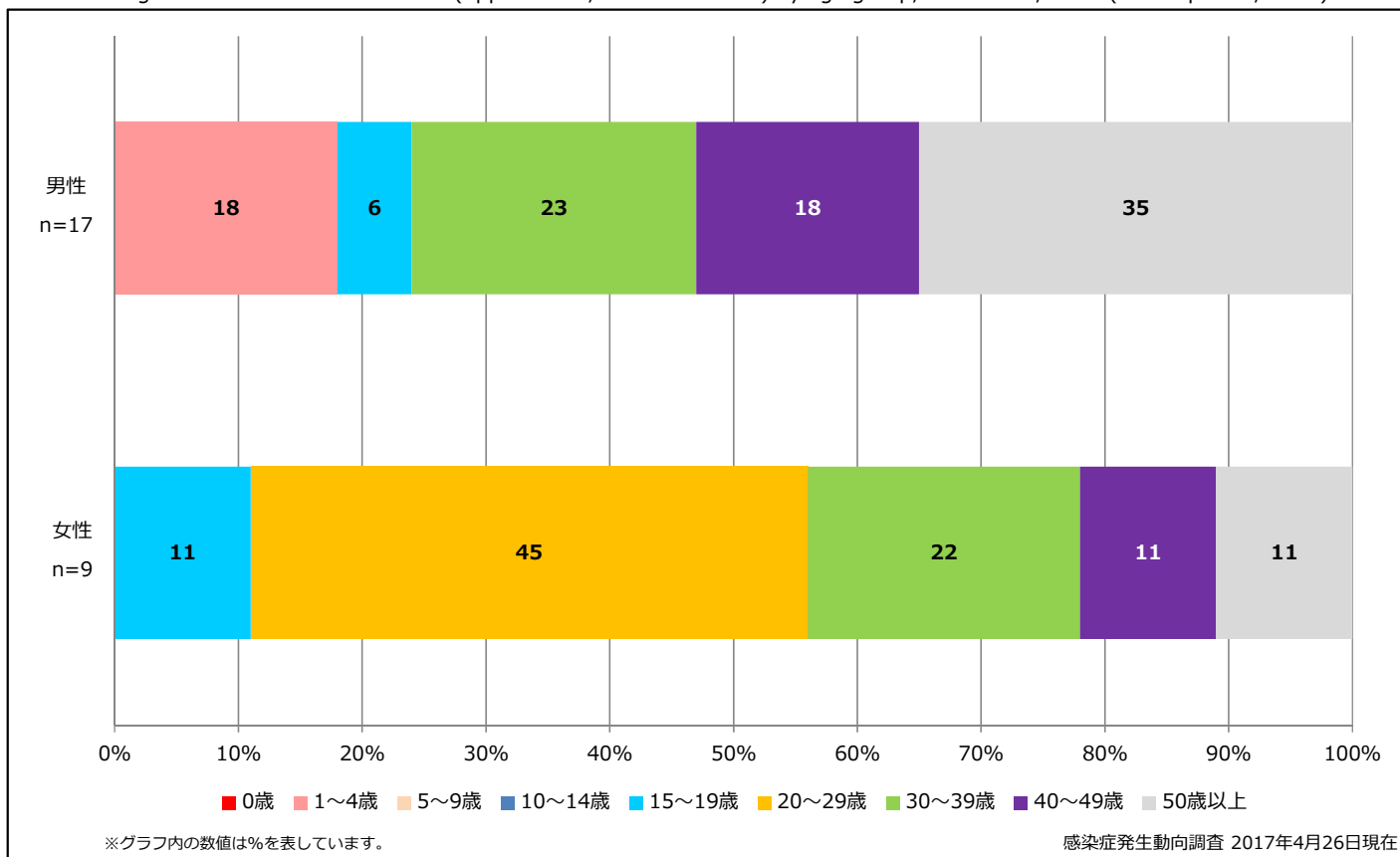
Cumulative rubella cases (female) by age and vaccinated status, week 1-16, 2017 (as of April 26, 2017)

None RCV1 RCV2 Unknown



6. 年齢群別風しん累積報告数割合 (男女別) 2017年 第1~16週 (n=26)

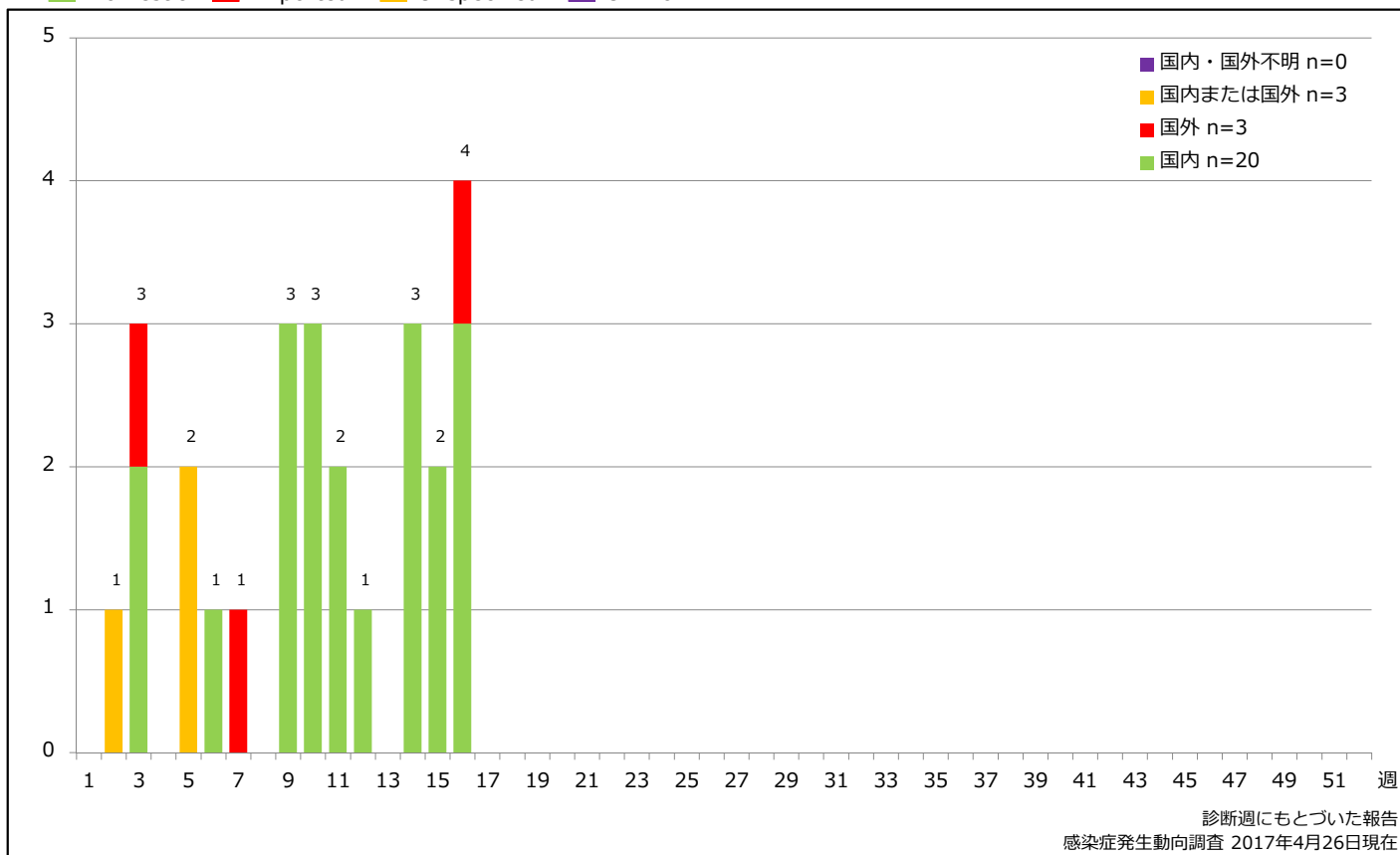
Percentage of cumulative rubella cases (upper: male, bottom: female) by age group, week 1-16, 2017 (as of April 26, 2017)



7. 週別推定感染地域(国内・外)別風しん報告数 2017年 第1~16週 (n=26)

Weekly rubella cases by acquired region, week 1-16, 2017 (based on diagnosed week as of April 26, 2017)

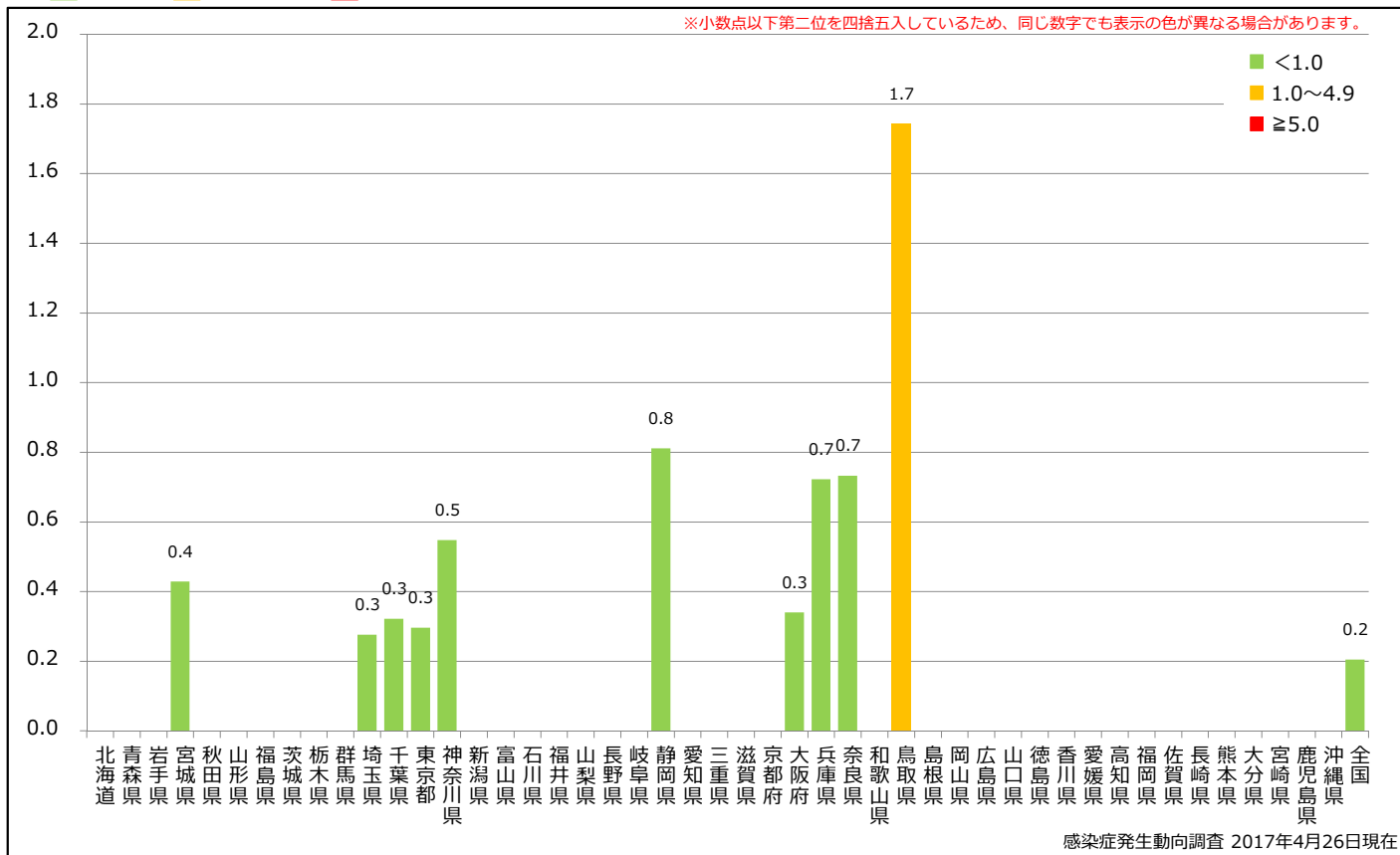
■ Domestic ■ Imported ■ Unspecified ■ Unknown



8. 都道府県別人口百万人あたり風しん報告数 2017年 第1~16週 (n=26)

Reported rubella cases per 1 million population by prefecture, week 1-16, 2017 (as of April 26, 2017)

■ <1.0 ■ 1.0~4.9 ■ ≥5.0



9. 都道府県別風しん週別報告状況 2017年 第1~16週 感染症発生動向調査

2017年04月26日現在

Weekly rubella cases from week 01 to week 16, 2017 (based on diagnosed week as of April 26, 2017)

