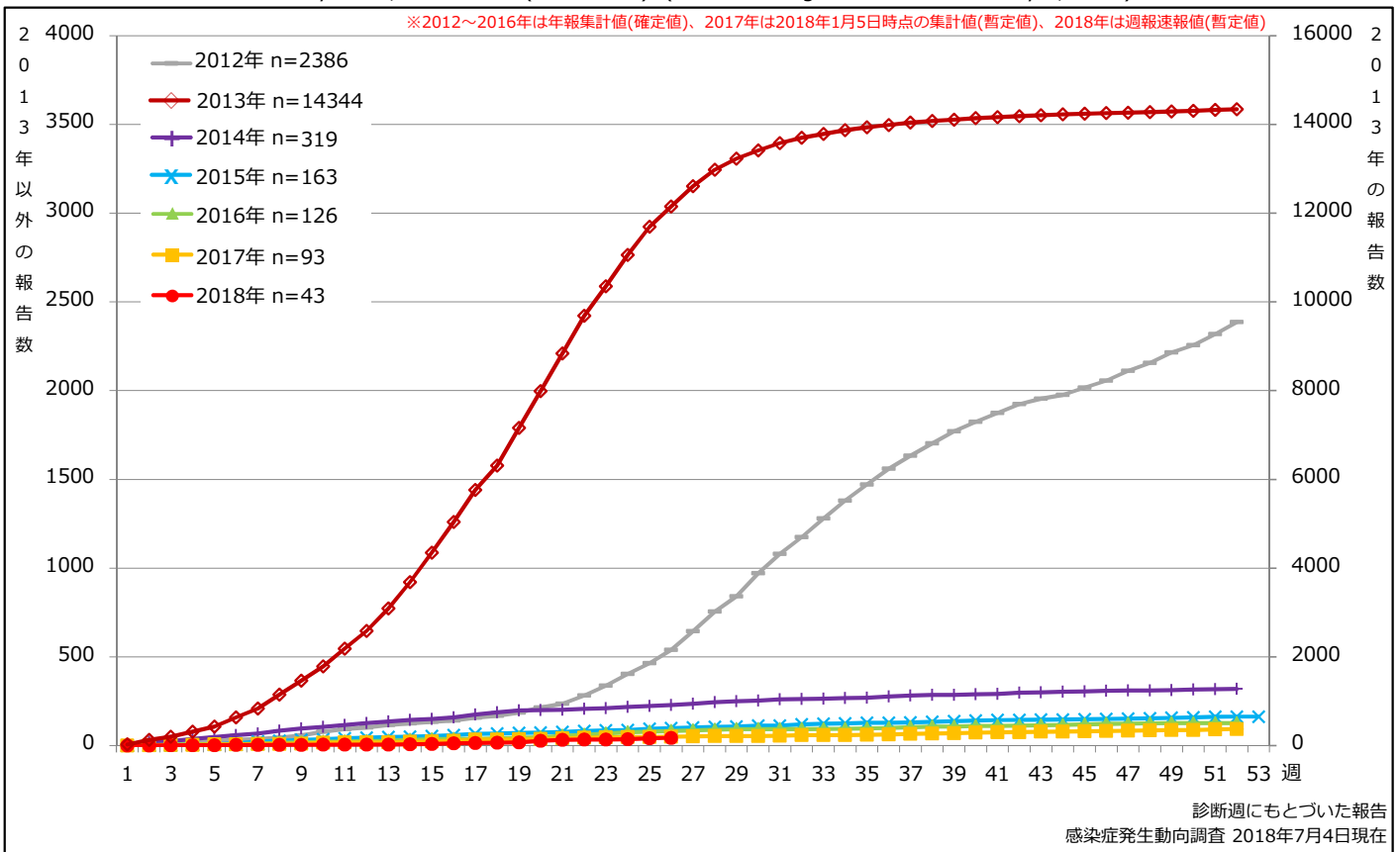


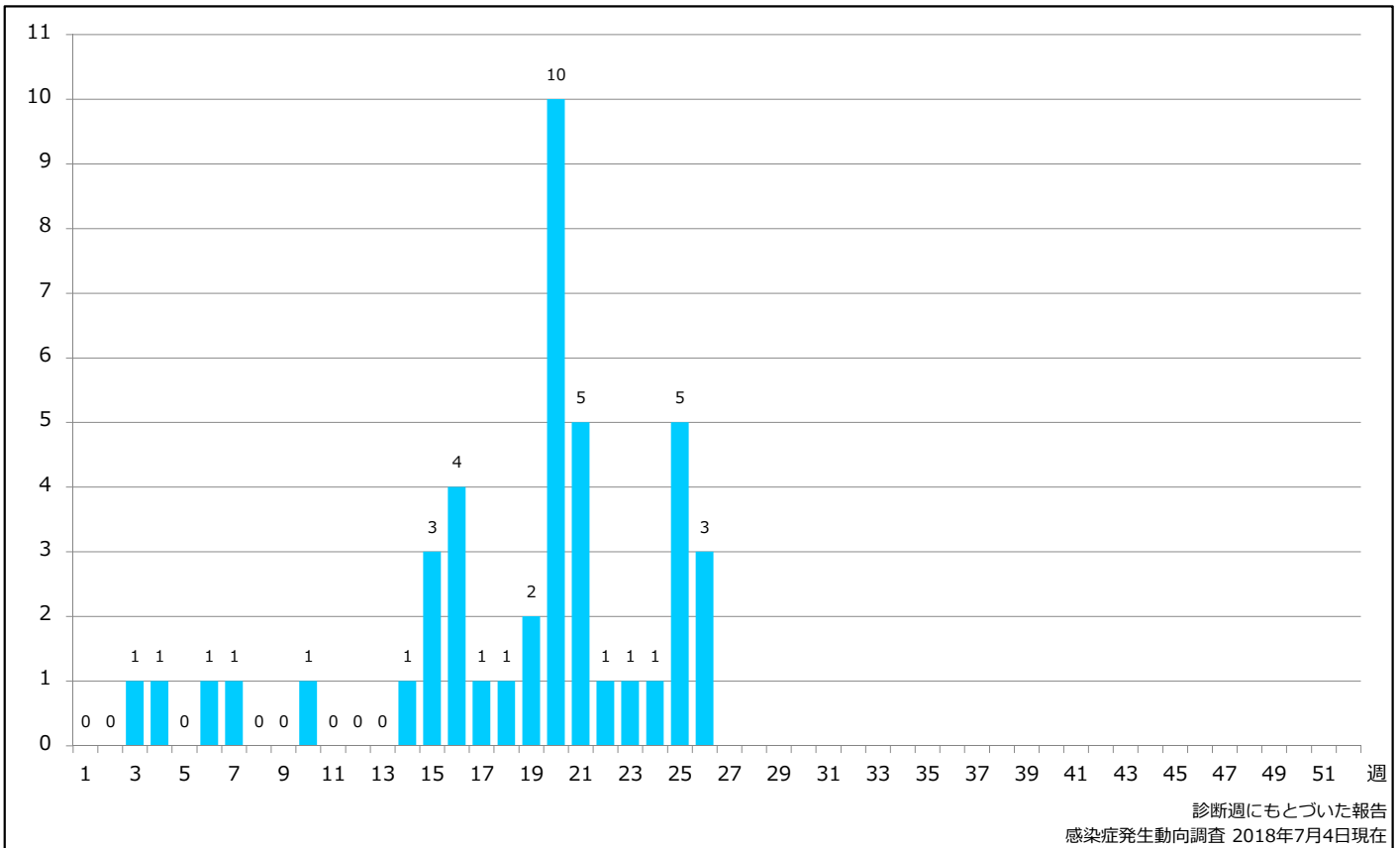
1. 風しん累積報告数の推移 2012~2018年 (第1~26週)

Cumulative rubella cases by week, 2012-2018 (week 1-26) (based on diagnosed week as of July 4, 2018)



2. 週別風しん報告数 2018年 第1~26週 (n=43)

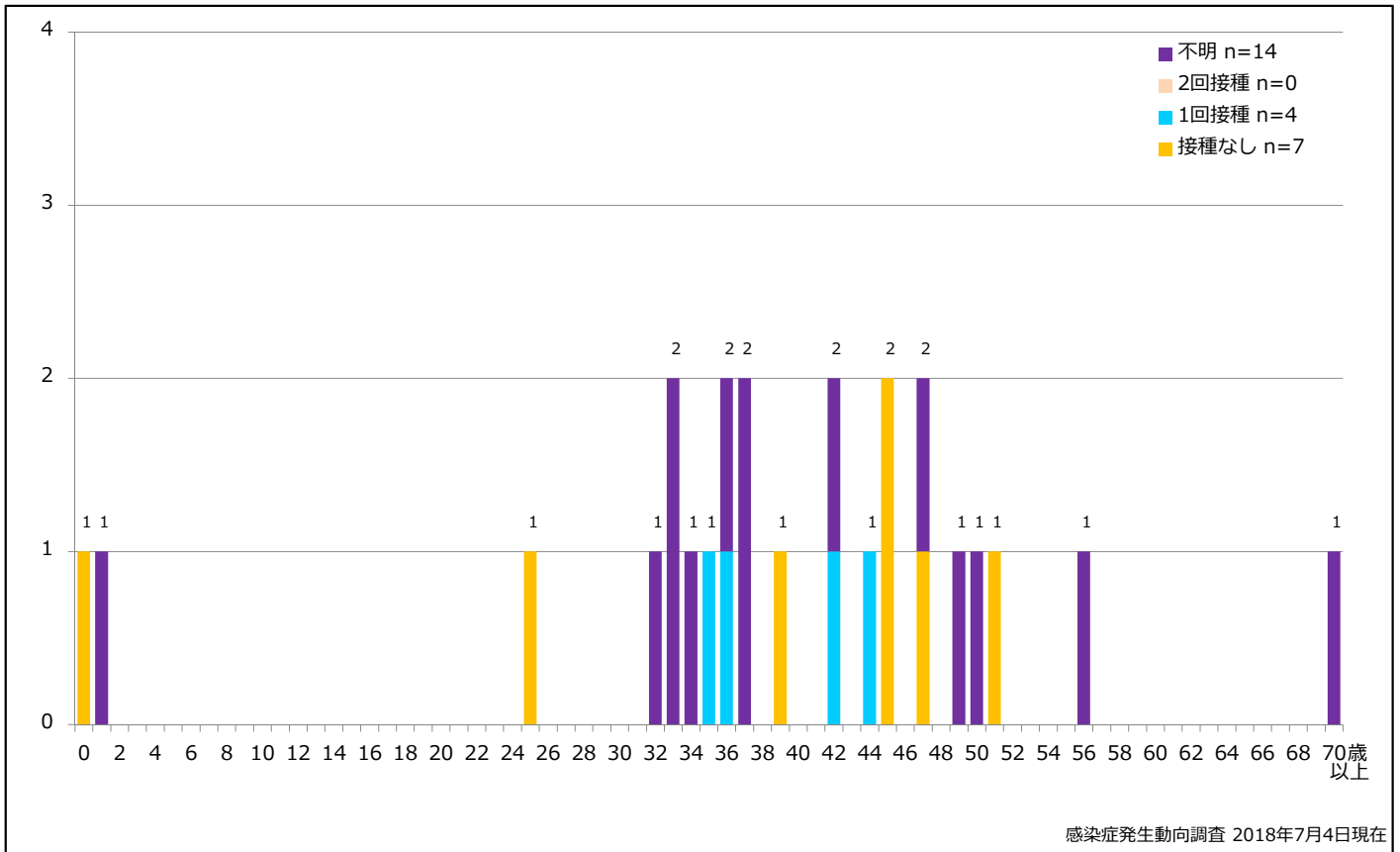
Weekly rubella cases, week 1-26, 2018 (based on diagnosed week as of July 4, 2018)



5-1. 年齢群別接種歴別風しん累積報告数 (男性) 2018年 第1~26週 (n=25)

Cumulative rubella cases (male) by age and vaccinated status, week 1-26, 2018 (as of July 4, 2018)

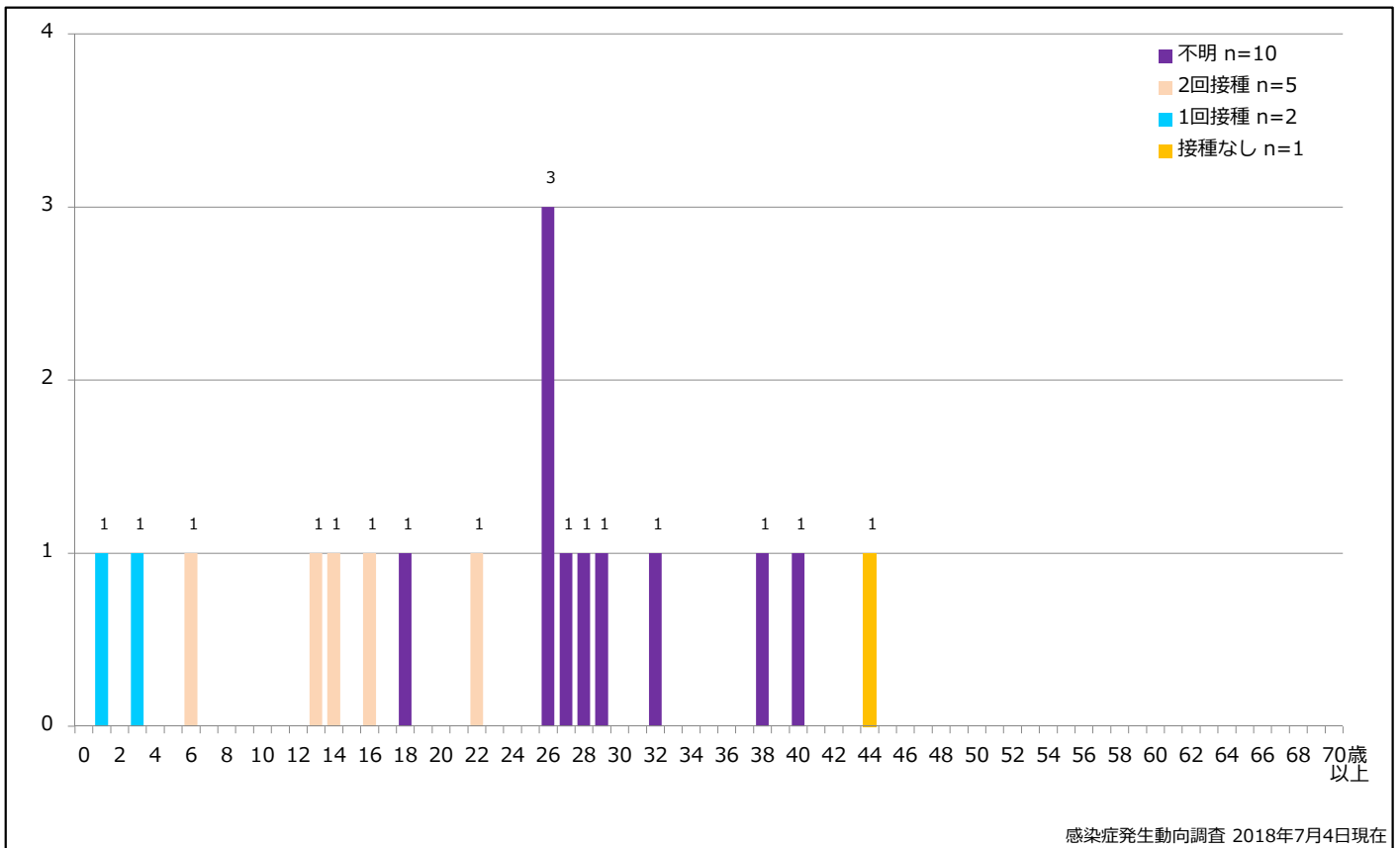
None RCV1 RCV2 Unknown



5-2. 年齢群別接種歴別風しん累積報告数 (女性) 2018年 第1~26週 (n=18)

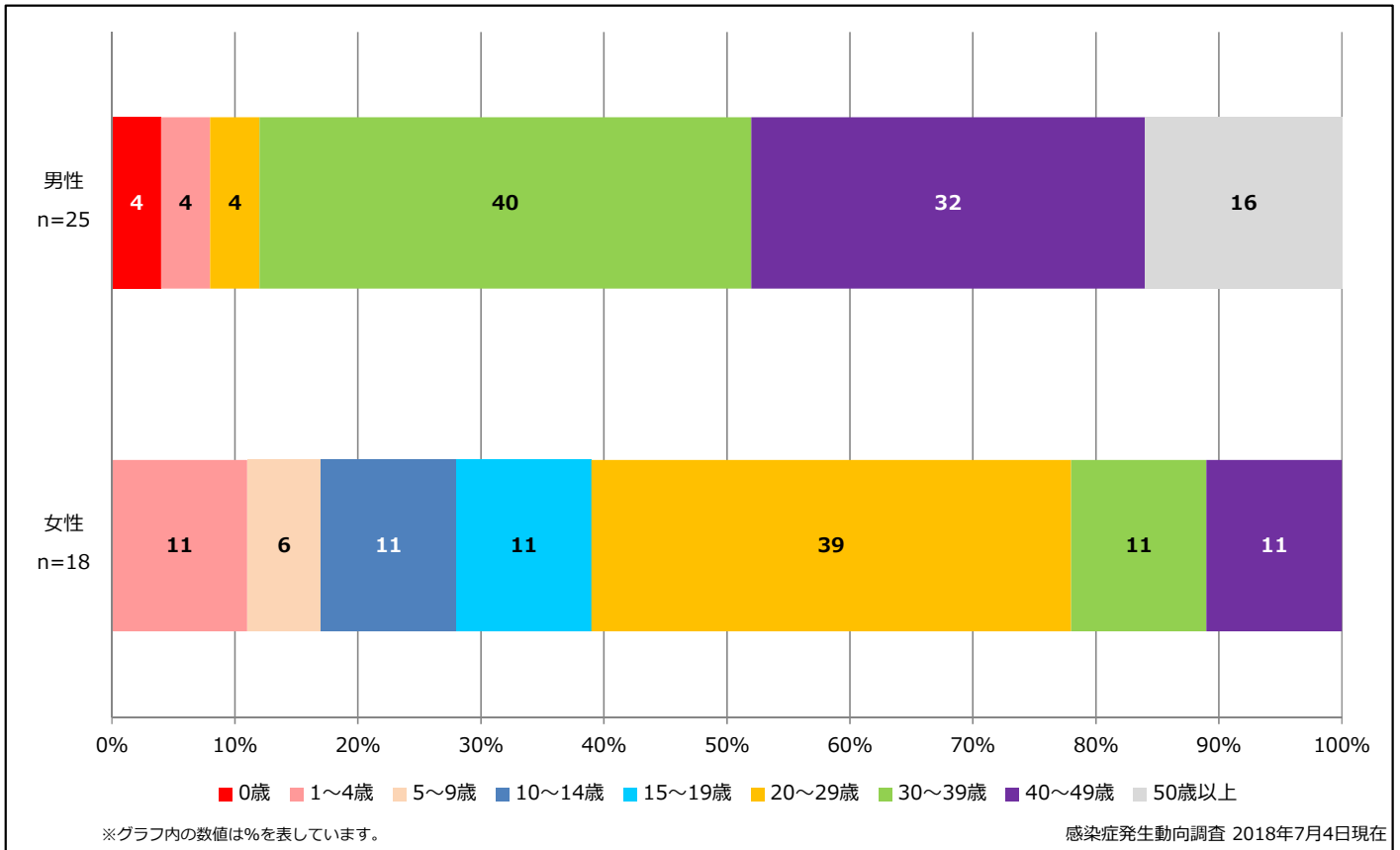
Cumulative rubella cases (female) by age and vaccinated status, week 1-26, 2018 (as of July 4, 2018)

None RCV1 RCV2 Unknown



6. 年齢群別風しん累積報告数割合 (男女別) 2018年 第1~26週 (n=43)

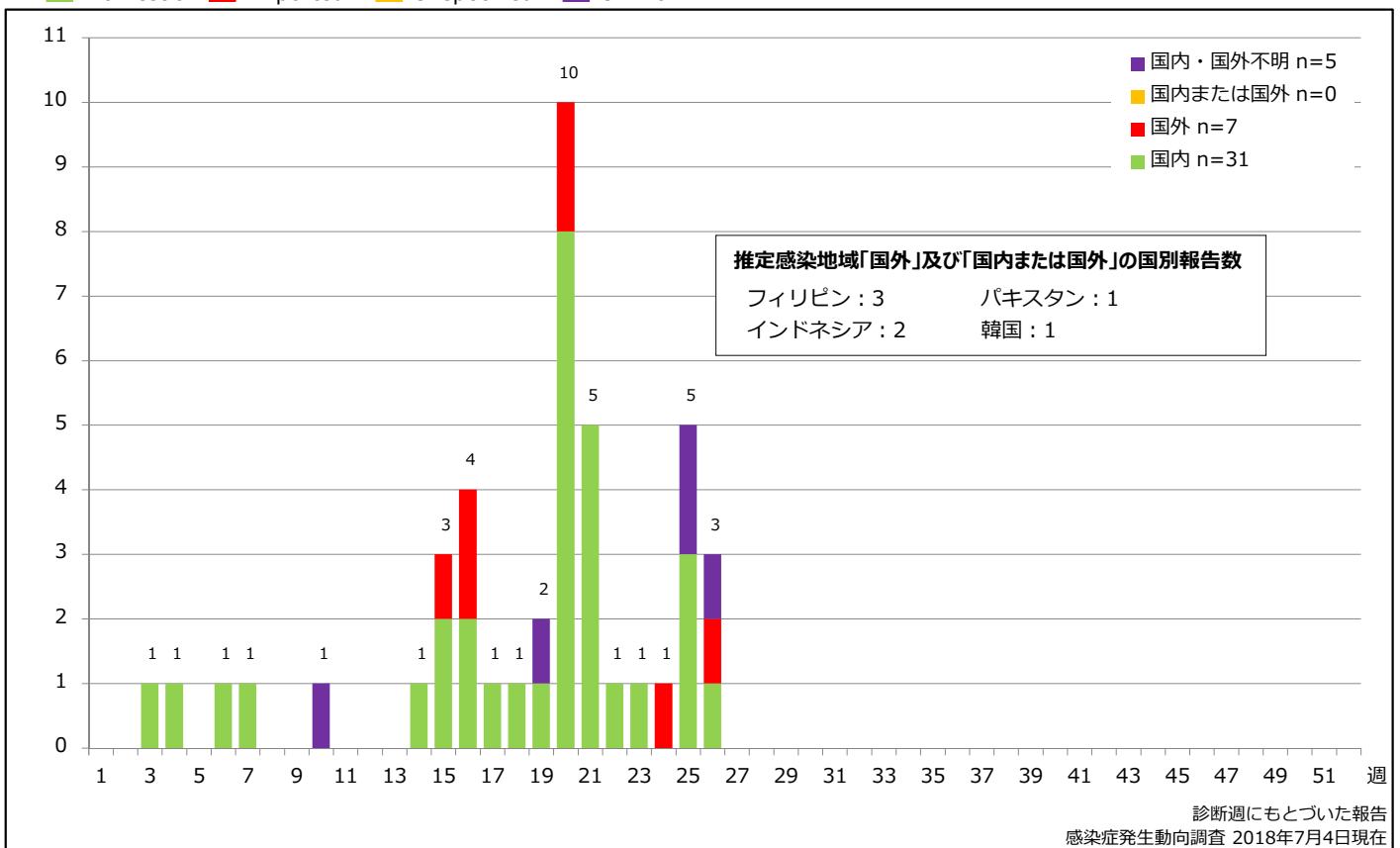
Percentage of cumulative rubella cases (upper: male, bottom: female) by age group, week 1-26, 2018 (as of July 4, 2018)



7. 週別推定感染地域(国内・外)別風しん報告数 2018年 第1~26週 (n=43)

Weekly rubella cases by acquired region, week 1-26, 2018 (based on diagnosed week as of July 4, 2018)

Domestic Imported Unspecified Unknown

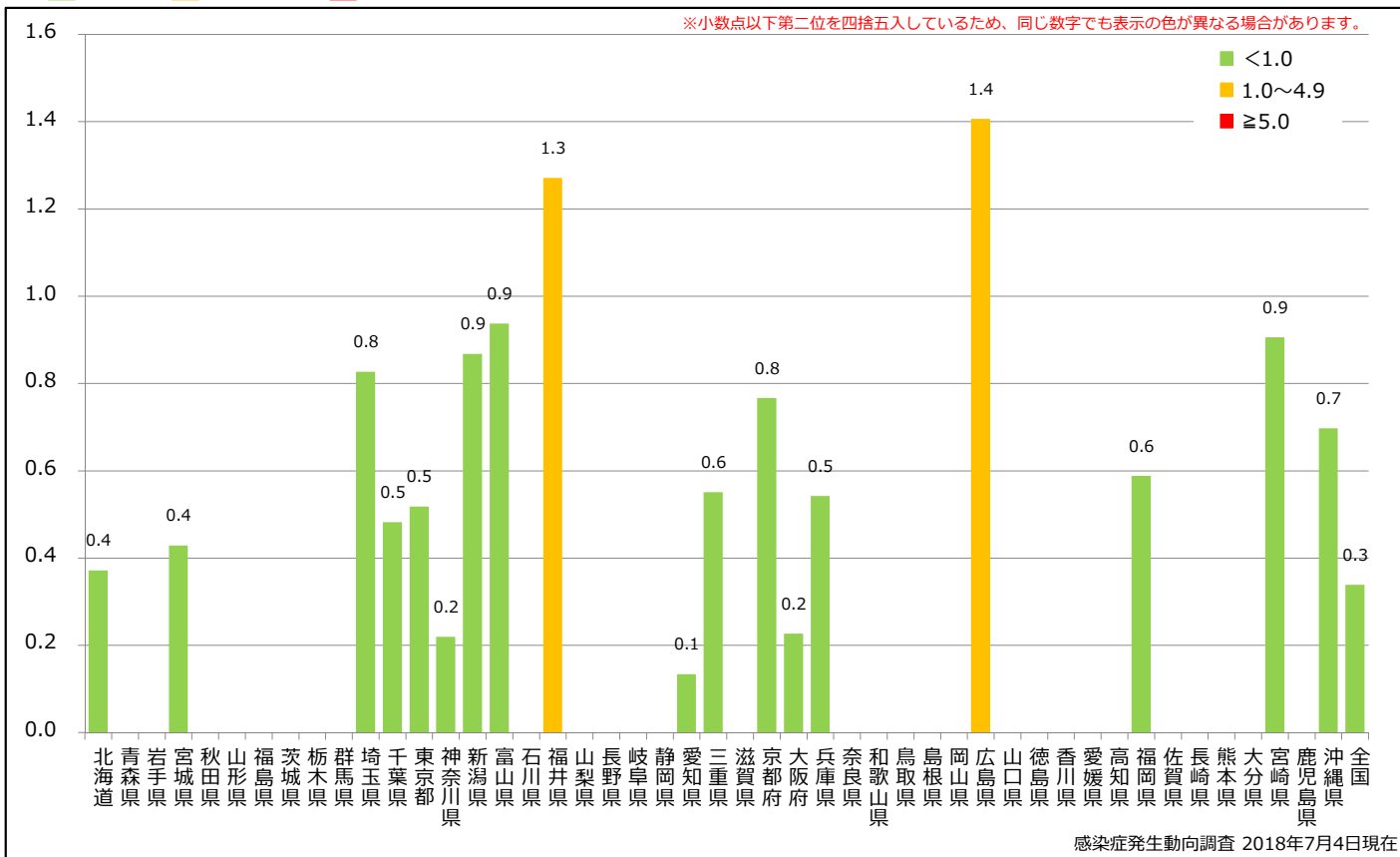


8. 都道府県別人口百万人あたり風しん報告数 2018年 第1~26週 (n=43)

Reported rubella cases per 1 million population by prefecture, week 1-26, 2018 (as of July 4, 2018)

■ <1.0 ■ 1.0~4.9 ■ ≥5.0

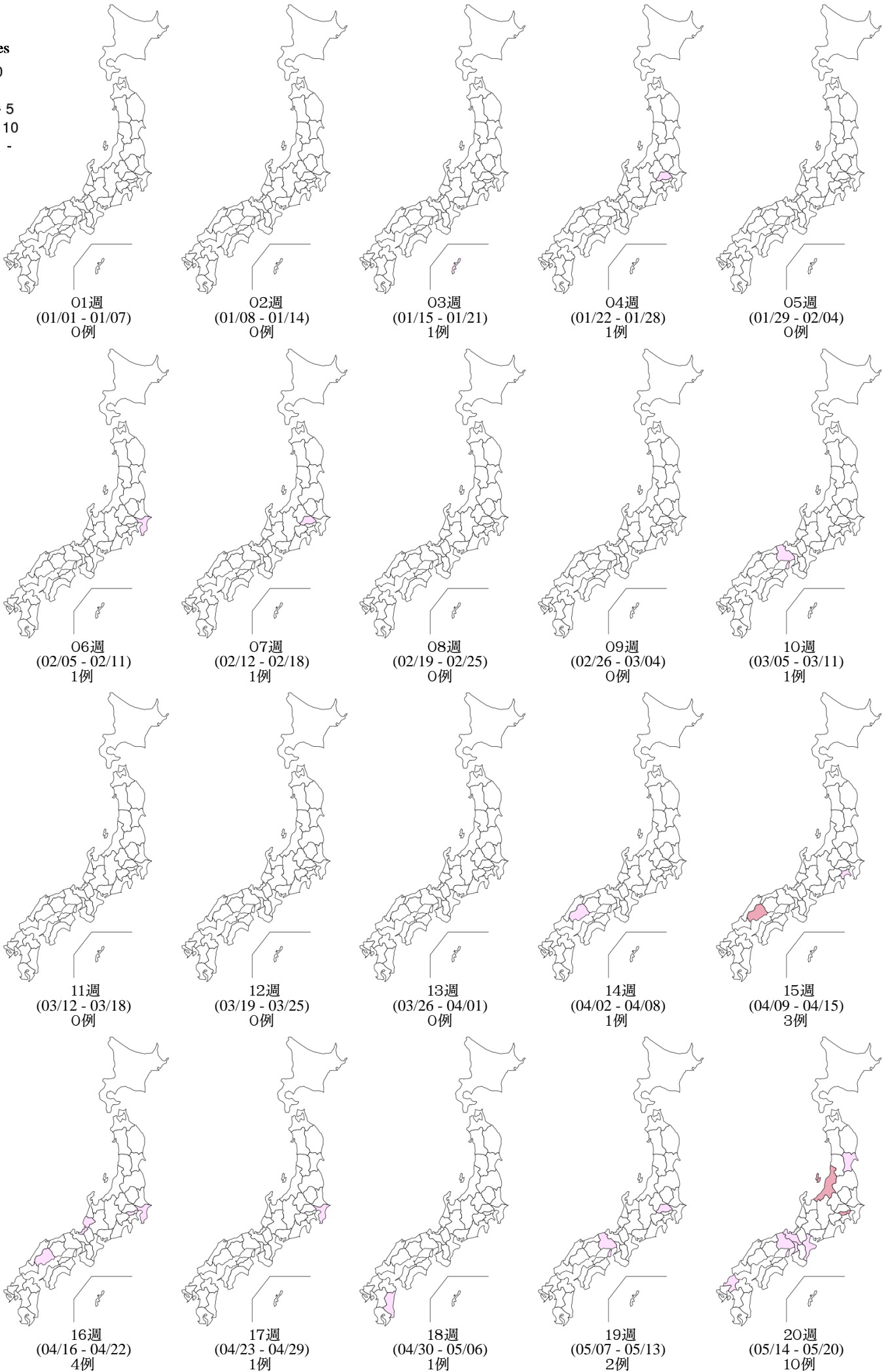
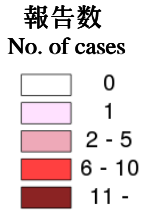
※小数点以下第二位を四捨五入しているため、同じ数字でも表示の色が異なる場合があります。



9. 都道府県別風しん週別報告状況 2018年 第1~26週 感染症発生動向調査

2018年07月04日現在

Weekly rubella cases from week 01 to week 26, 2018 (based on diagnosed week as of July 04, 2018)



9. 都道府県別風しん週別報告状況 2018年 第1~26週 感染症発生動向調査

2018年07月04日現在

Weekly rubella cases from week 01 to week 26, 2018 (based on diagnosed week as of July 04, 2018)

