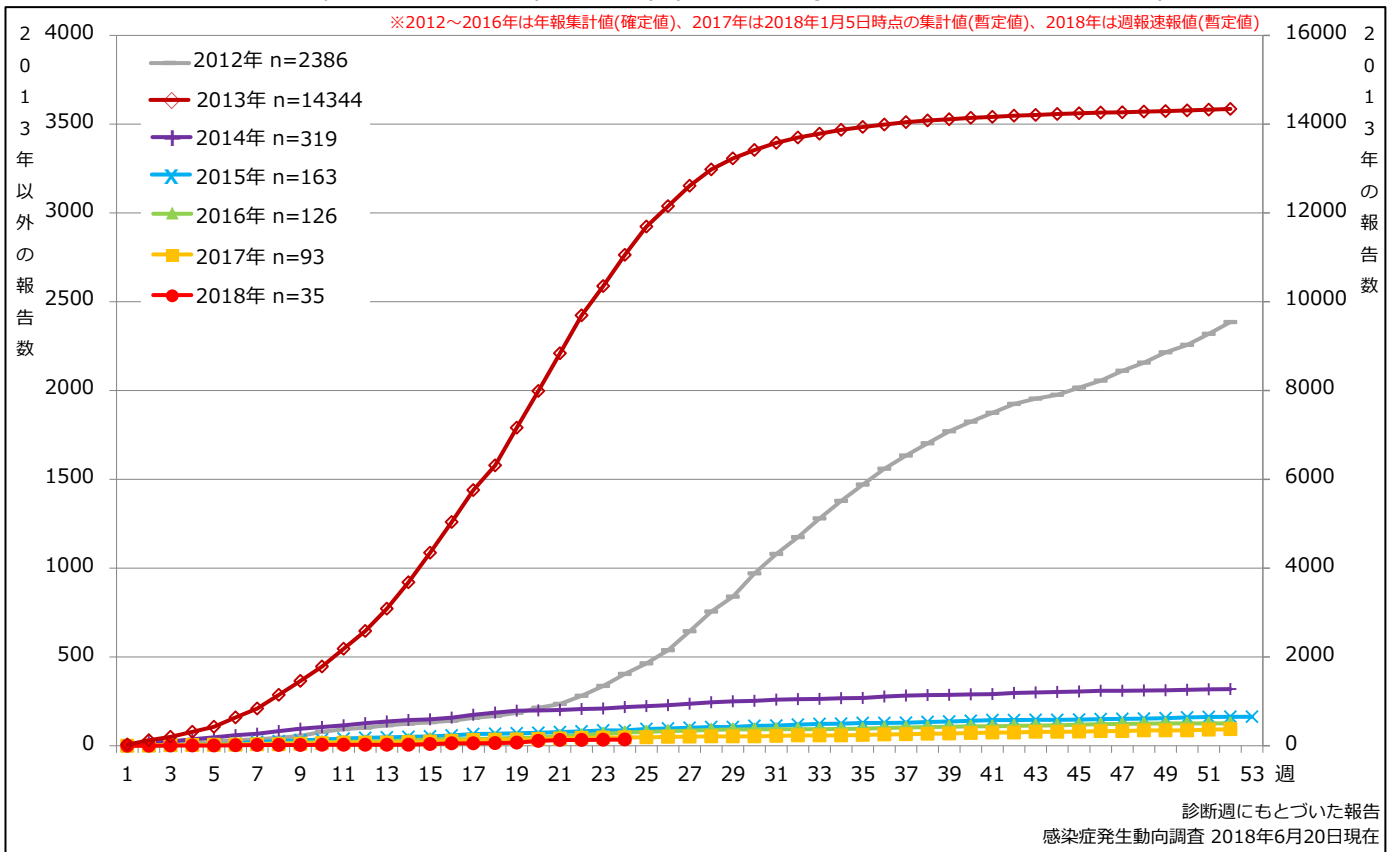


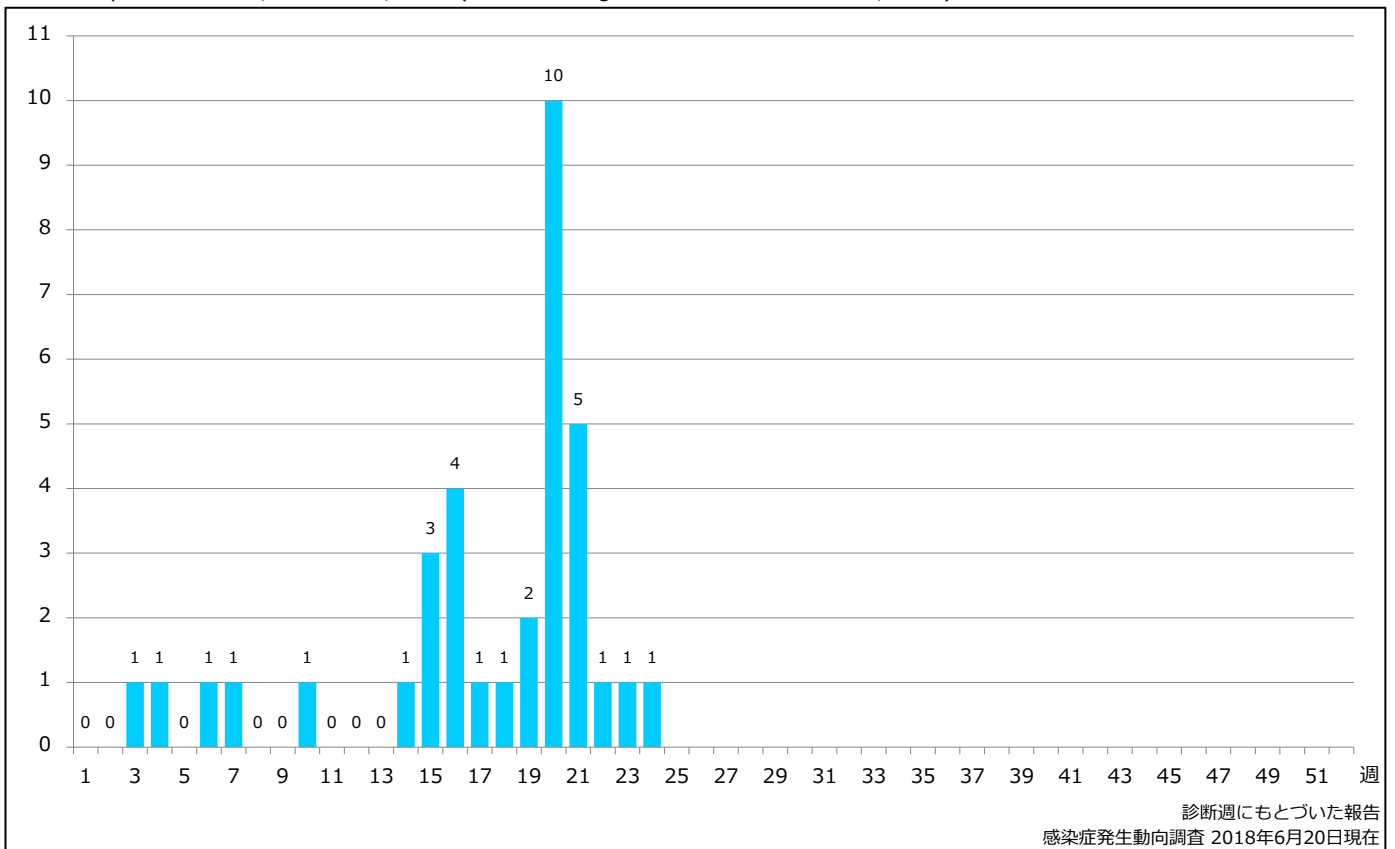
## 1. 風しん累積報告数の推移 2012～2018年 (第1～24週)

Cumulative rubella cases by week, 2012-2018 (week 1-24) (based on diagnosed week as of June 20, 2018)



## 2. 週別風しん報告数 2018年 第1～24週 (n=35)

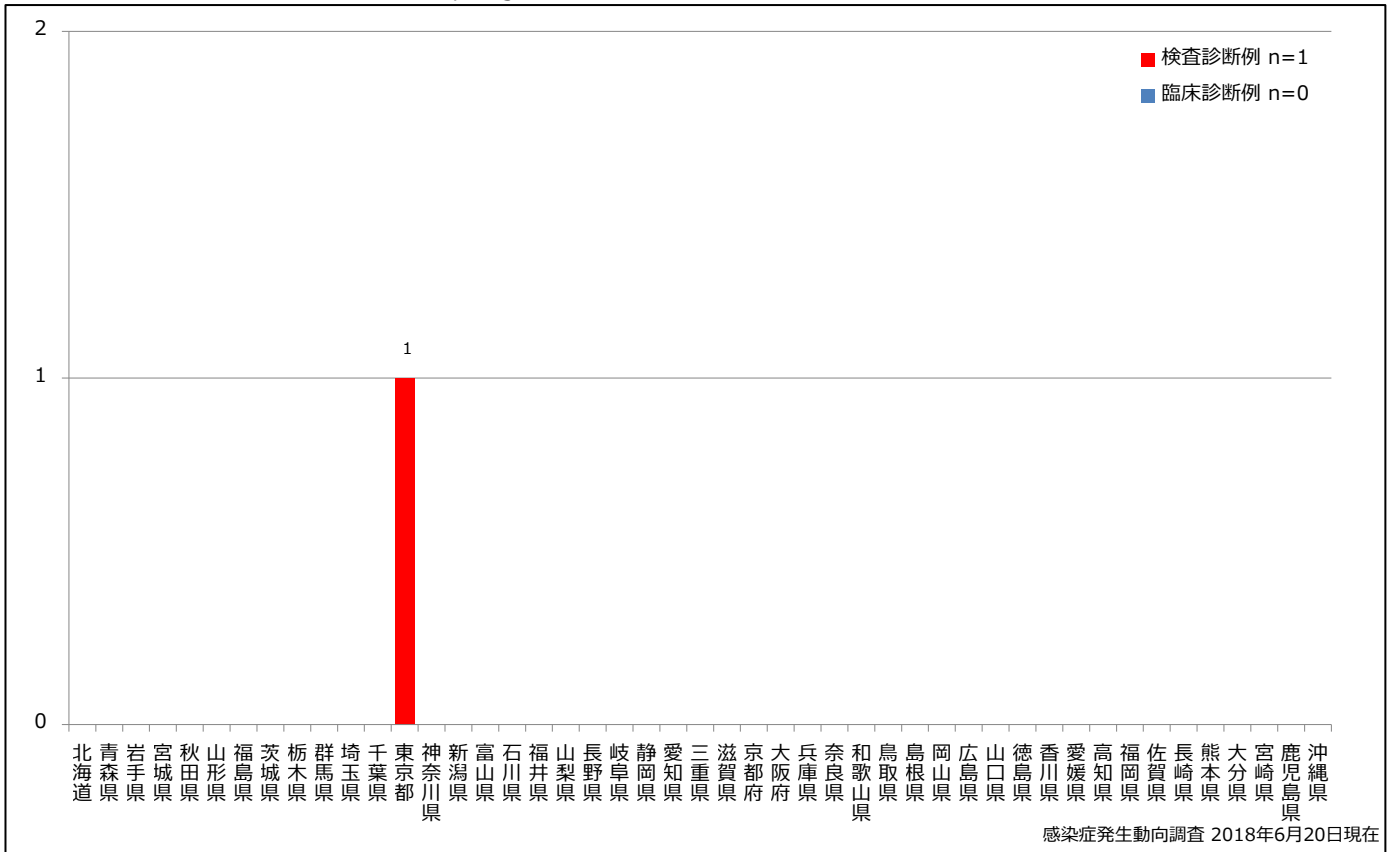
Weekly rubella cases, week 1-24, 2018 (based on diagnosed week as of June 20, 2018)



### 3. 都道府県別病型別風しん報告数 2018年 第24週 (n=1)

Reported rubella cases by prefecture and methods of diagnosis in week 24, 2018 (as of June 20, 2018)

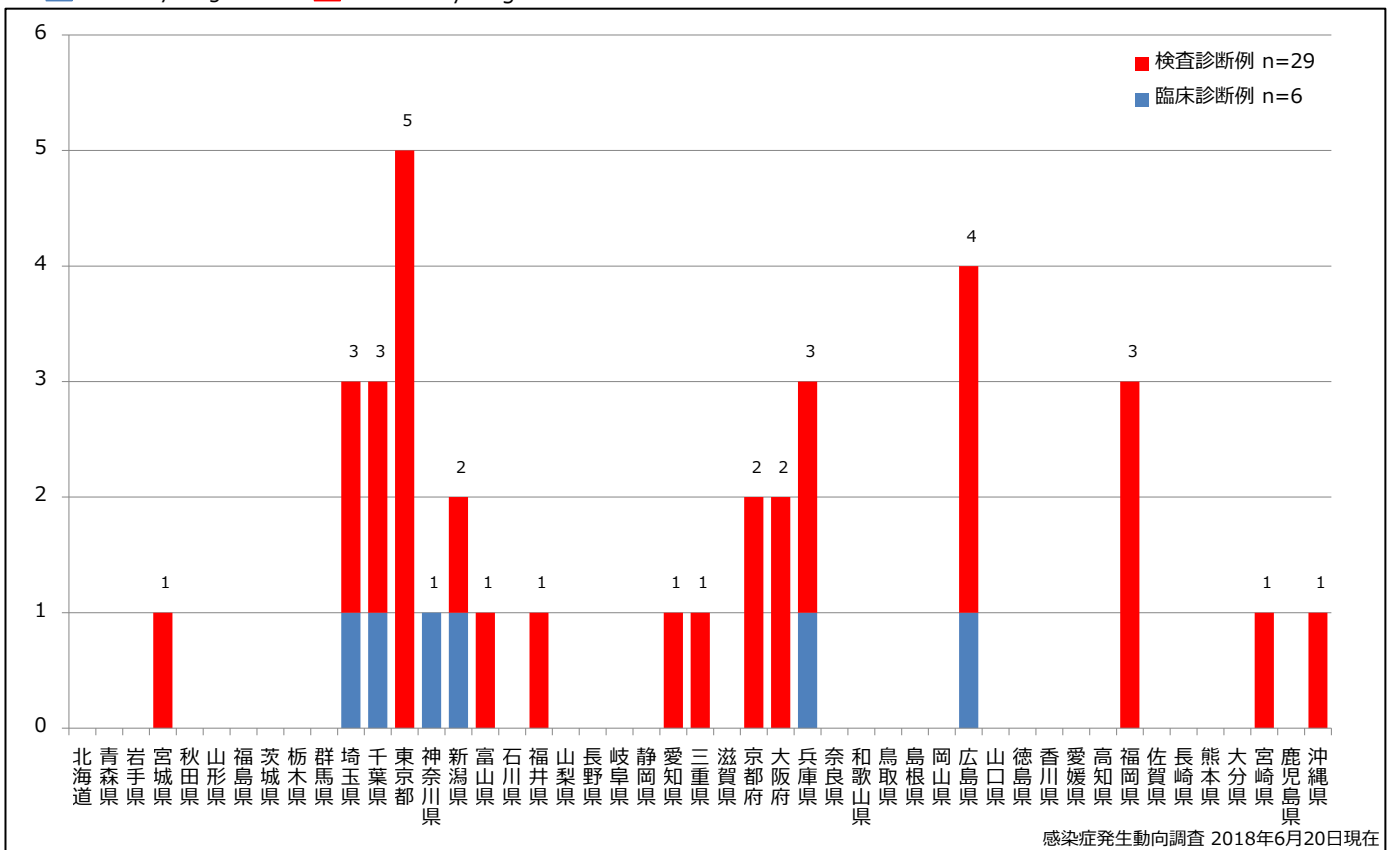
■ Clinically diagnosed ■ Laboratory diagnosed



### 4. 都道府県別病型別風しん累積報告数 2018年 第1~24週 (n=35)

Cumulative rubella cases by prefecture and methods of diagnosis, week 1-24, 2018 (as of June 20, 2018)

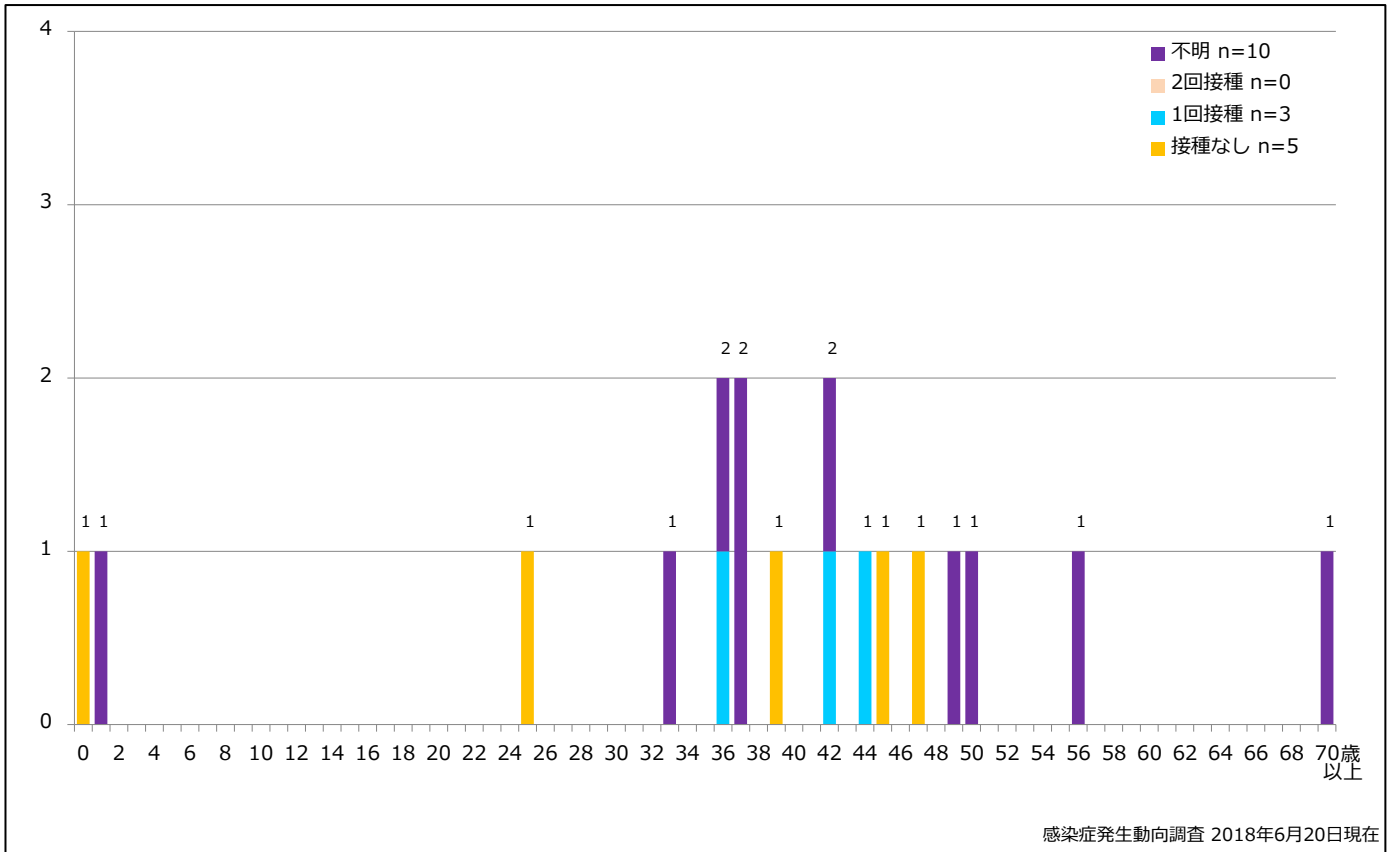
■ Clinically diagnosed ■ Laboratory diagnosed



**5-1. 年齢群別接種歴別風しん累積報告数 (男性) 2018年 第1~24週 (n=18)**

Cumulative rubella cases (male) by age and vaccinated status, week 1-24, 2018 (as of June 20, 2018)

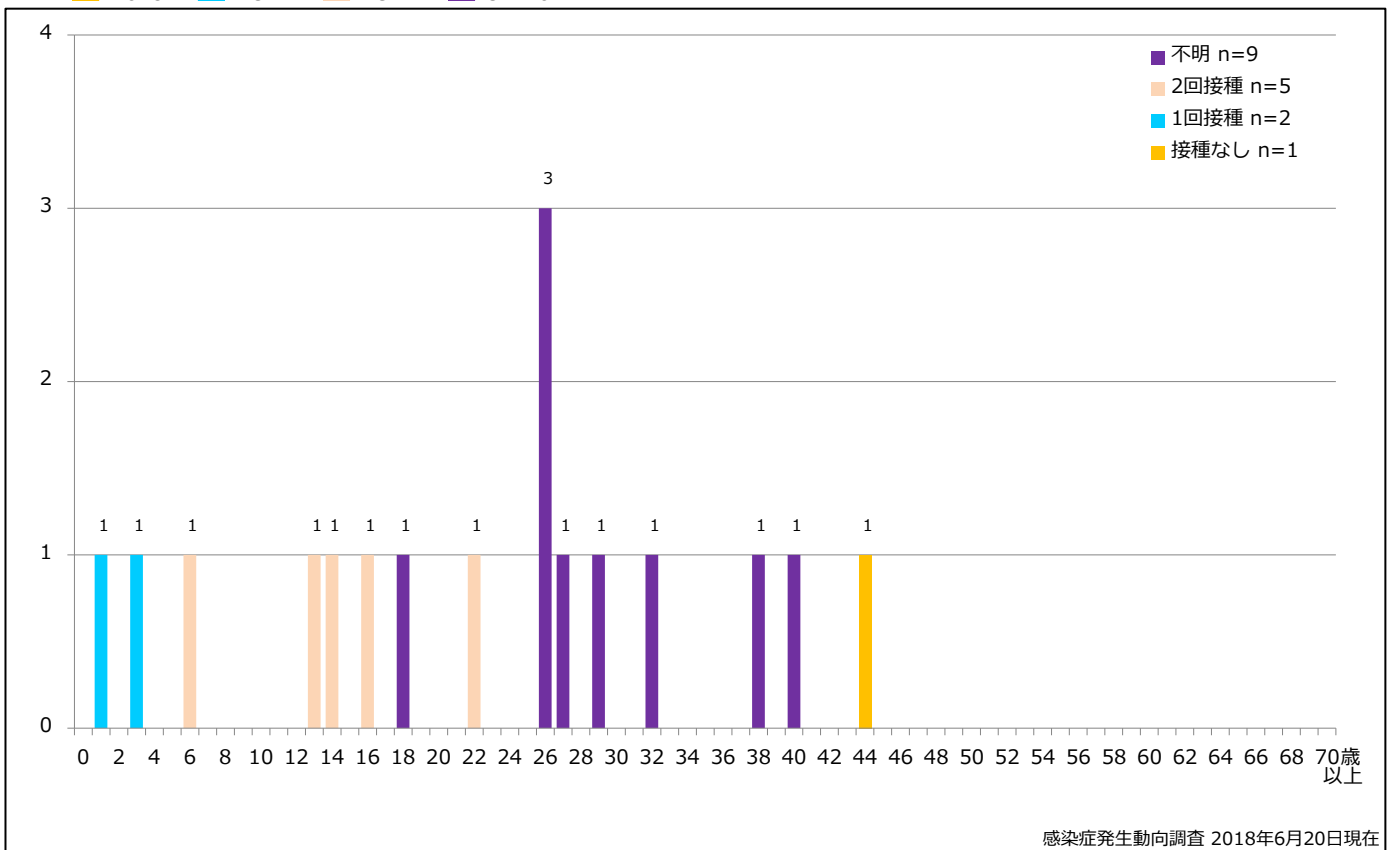
■ None ■ RCV1 ■ RCV2 ■ Unknown



**5-2. 年齢群別接種歴別風しん累積報告数 (女性) 2018年 第1~24週 (n=17)**

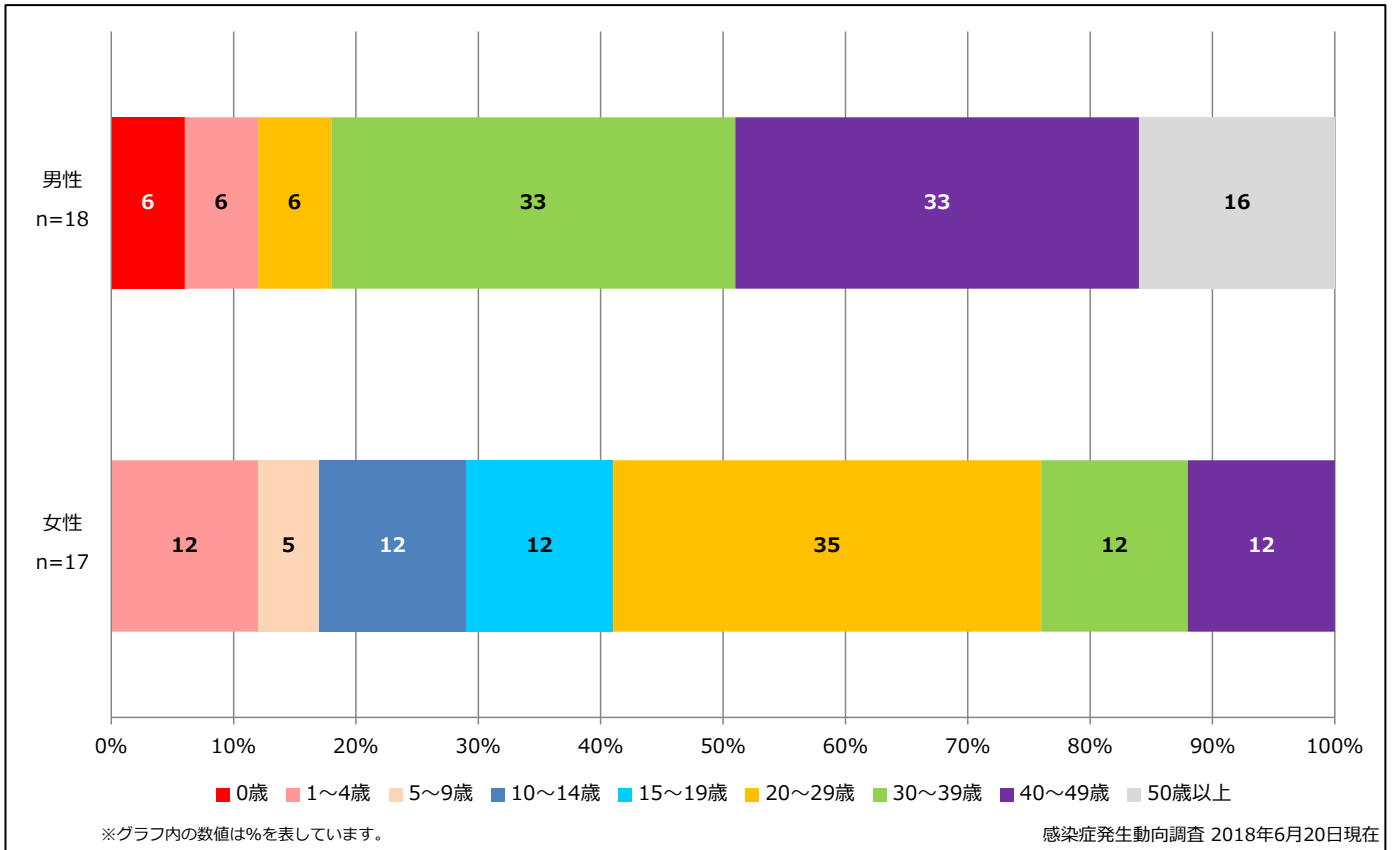
Cumulative rubella cases (female) by age and vaccinated status, week 1-24, 2018 (as of June 20, 2018)

■ None ■ RCV1 ■ RCV2 ■ Unknown



### 6. 年齢群別風しん累積報告数割合 (男女別) 2018年 第1~24週 (n=35)

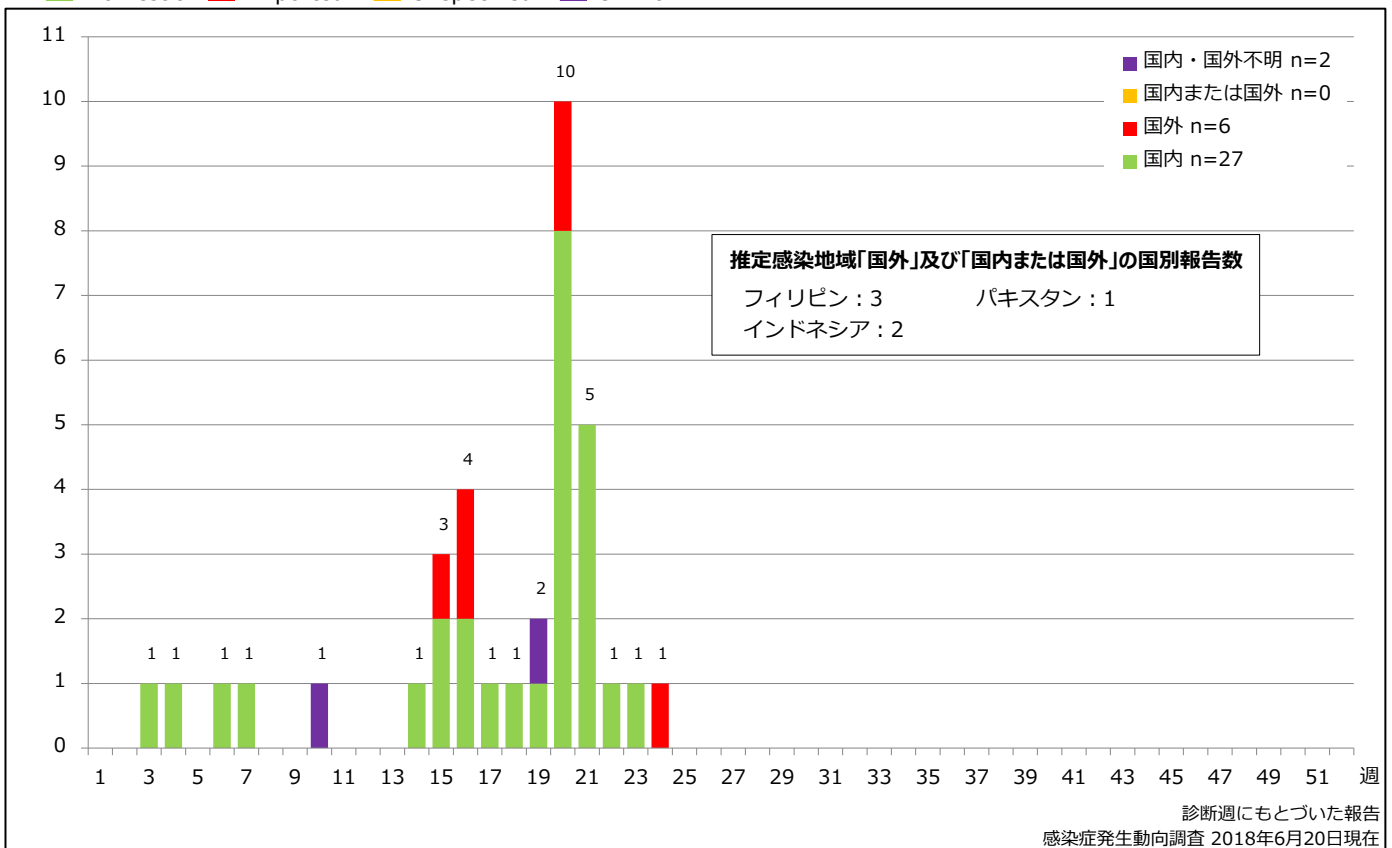
Percentage of cumulative rubella cases (upper: male, bottom: female) by age group, week 1-24, 2018 (as of June 20, 2018)



### 7. 週別推定感染地域(国内・外)別風しん報告数 2018年 第1~24週 (n=35)

Weekly rubella cases by acquired region, week 1-24, 2018 (based on diagnosed week as of June 20, 2018)

Domestic Imported Unspecified Unknown

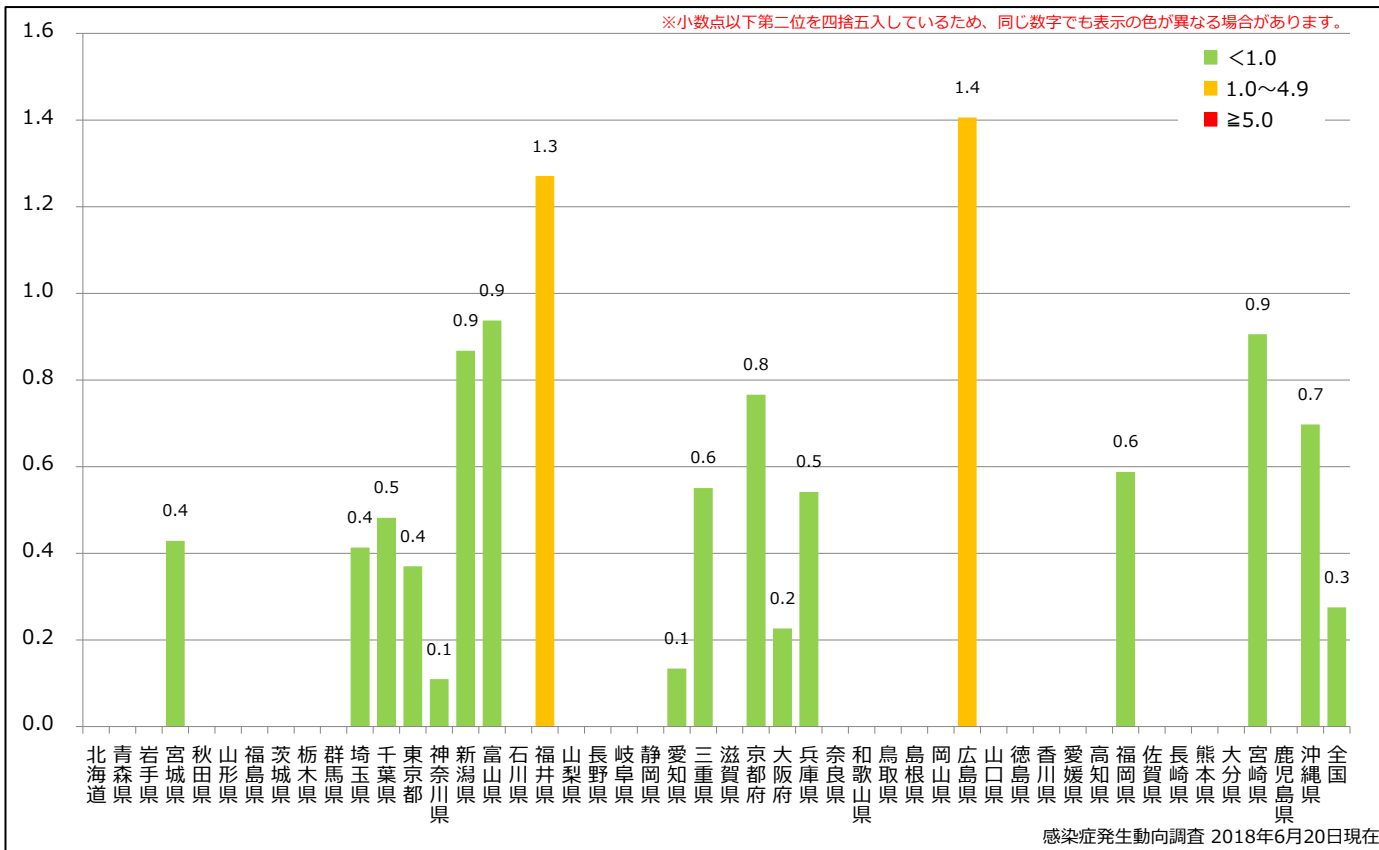


### 8. 都道府県別人口百万人あたり風しん報告数 2018年 第1~24週 (n=35)

Reported rubella cases per 1 million population by prefecture, week 1-24, 2018 (as of June 20, 2018)

■ <1.0 ■ 1.0~4.9 ■ ≥5.0

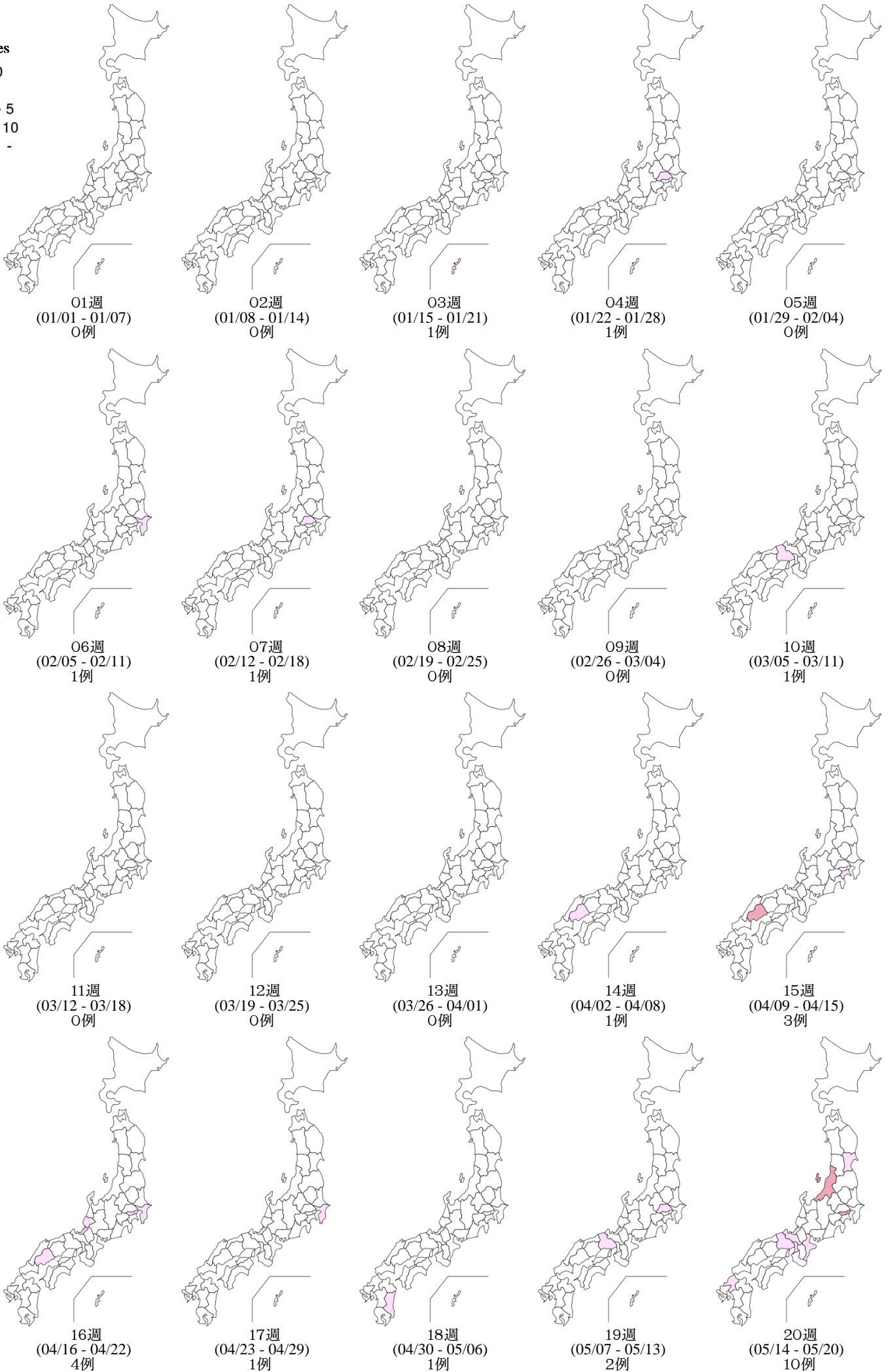
※小数点以下第二位を四捨五入しているため、同じ数字でも表示の色が異なる場合があります。



9. 都道府県別風しん週別報告状況 2018年 第1~24週 感染症発生動向調査

2018年06月20日現在

Weekly rubella cases from week 01 to week 24, 2018 (based on diagnosed week as of June 20, 2018)



9. 都道府県別風しん週別報告状況 2018年 第1~24週 感染症発生動向調査

2018年06月20日現在

Weekly rubella cases from week 01 to week 24, 2018 (based on diagnosed week as of June 20, 2018)

報告数  
No. of cases

