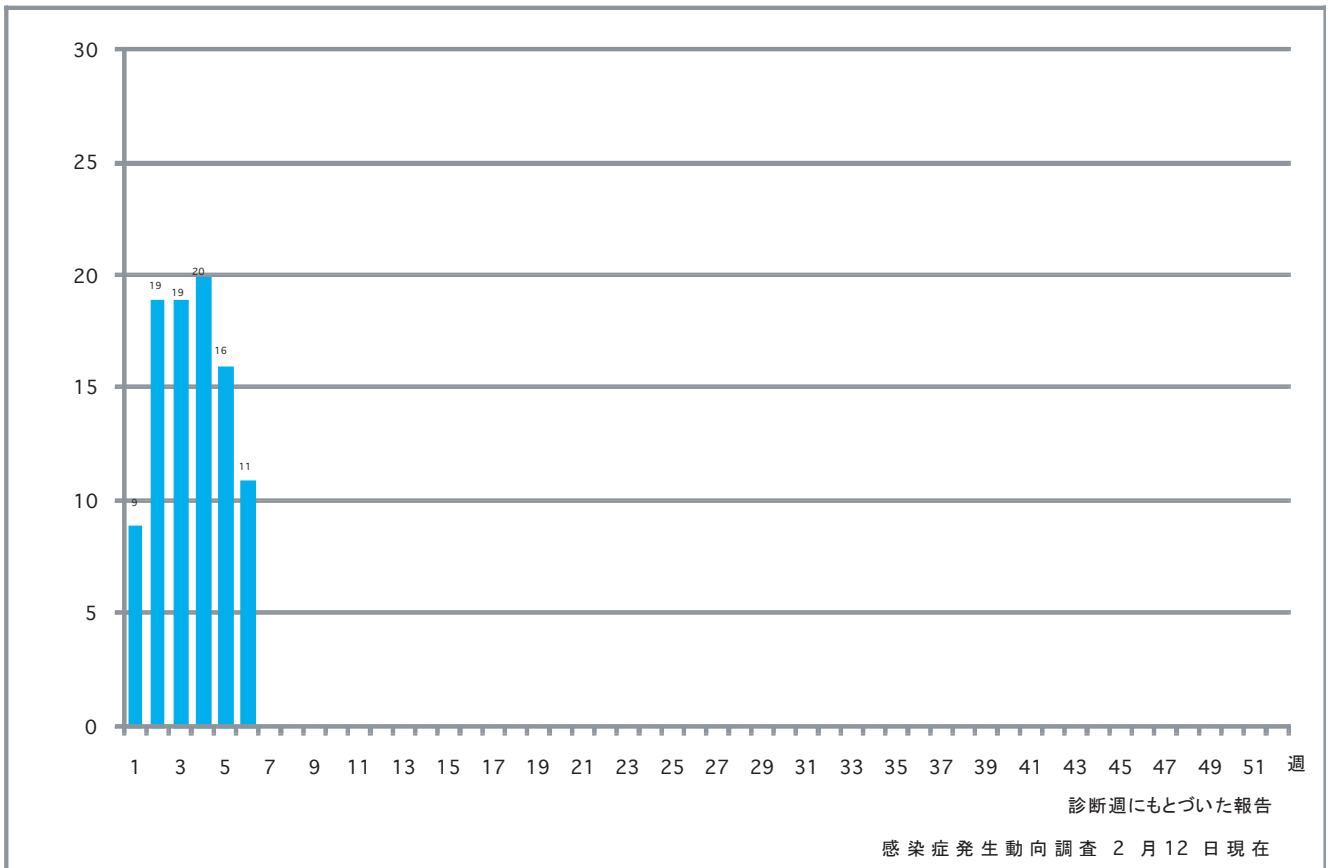


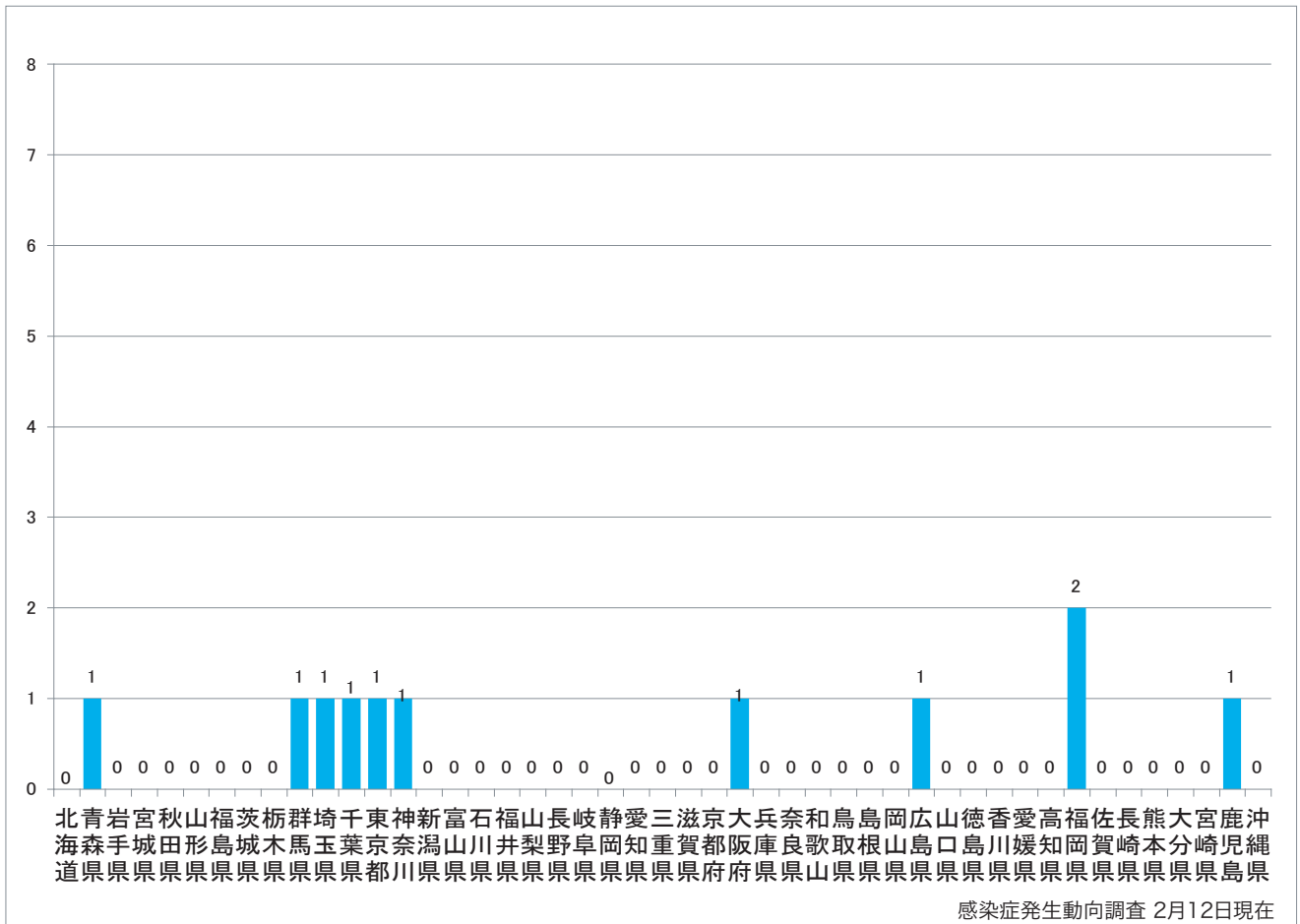
1. 週別麻疹報告数 2009年第1週-6週 (n=94)

Weekly measles cases from week 1 to week 6 in 2009 (based on diagnosed week as of February 12)



2. 都道府県別麻疹報告数2009年第6週 (n=11)

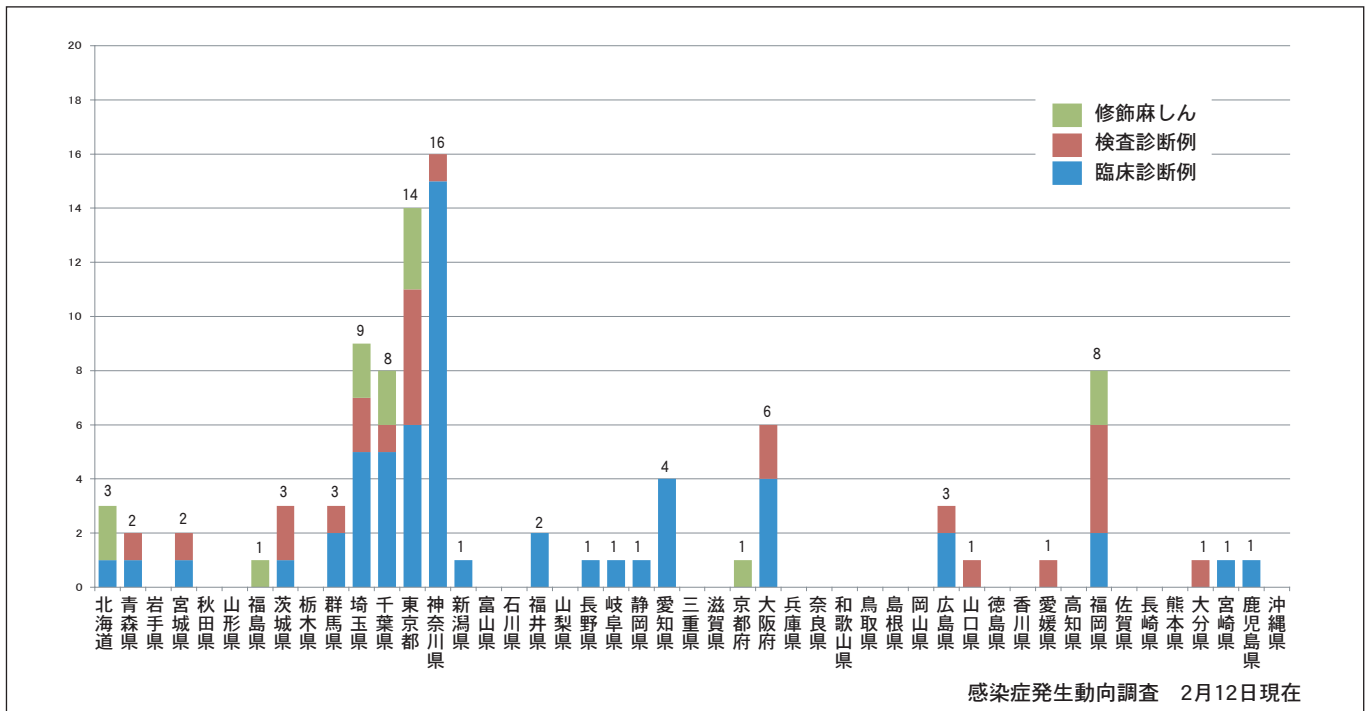
Reported measles cases by prefecture in week 6, 2009 (as of February 12).



3. 都道府県別病型別麻疹累積報告数 2009年第1週-6週 (n=94)

Cumulative measles cases by prefecture and methods of diagnosis from week 1 to week 6, 2009 (as of February 12).

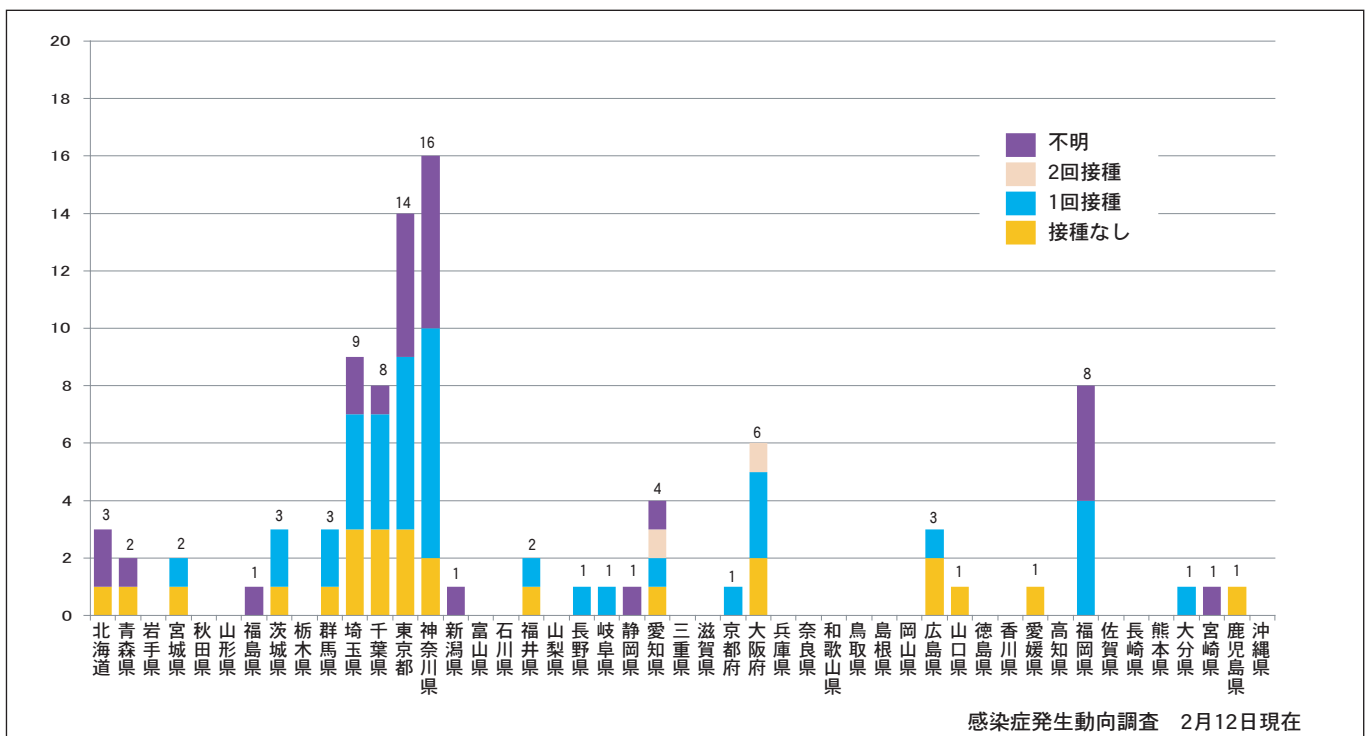
■ Clinically diagnosed ■ Laboratory diagnosed ■ Modified measles, laboratory diagnosed



4. 都道府県別接種歴別麻疹累積報告数 2009年第1週-6週 (n=94)

Cumulative measles cases by prefecture and vaccinated status from week 1 to week 6, 2009 (as of February 12).

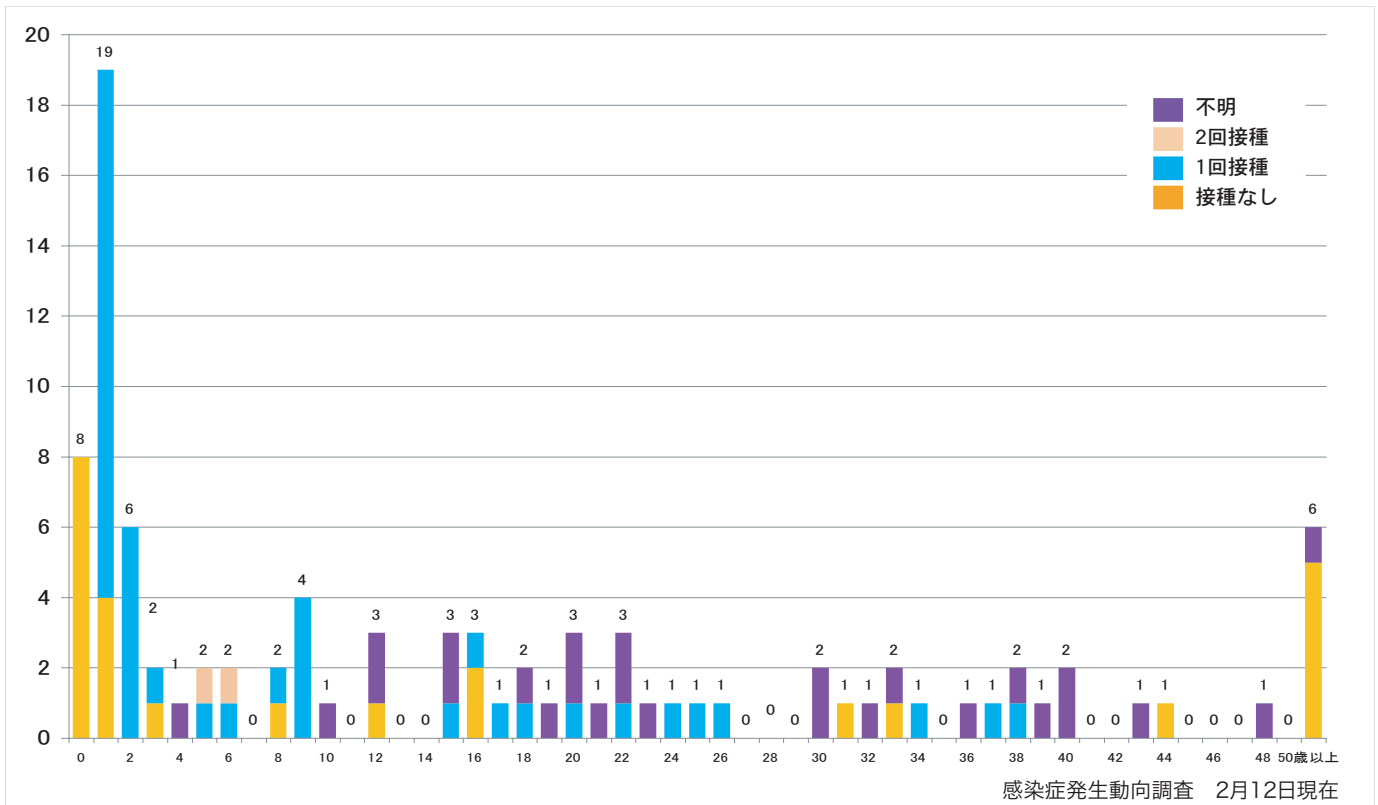
■ None ■ MCV1 ■ MCV2 ■ Unknown



5. 年齢群別接種歴別麻疹累積報告数 2009年第1週-6週 (n=94)

Cumulative measles cases by age and vaccinated status from week 1 to week 6, 2009  
(as of February 12).

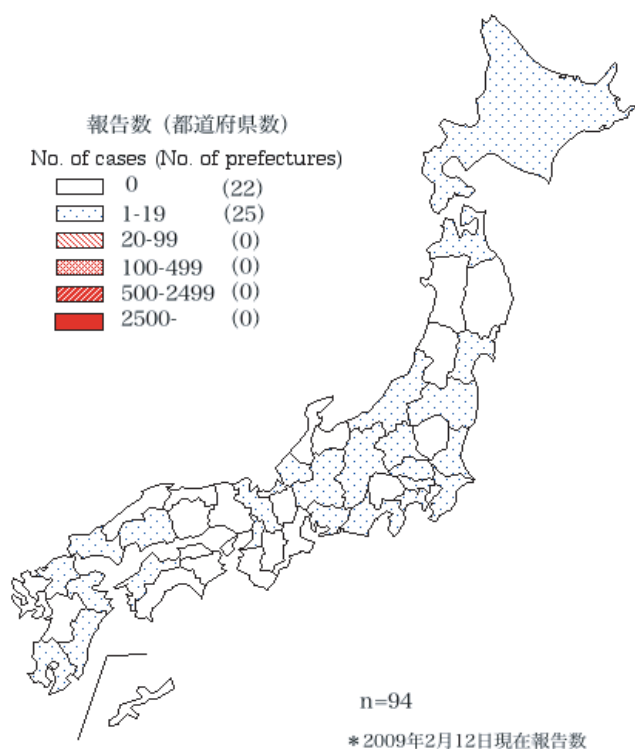
None MCV1 MCV2 Unknown



6. 都道府県別麻疹累積報告状況、2009年第1週－6週

感染症発生動向調査

Cumulative measles cases by prefecture from week 1 to week 6, 2009 (as of February 12).



7. 都道府県別麻疹週別報告状況2009年 2009年第1週－6週 感染症発生動向調査

Weekly measles cases from week 1 to week 6, 2009 (based on diagnosed week as of February 12)

