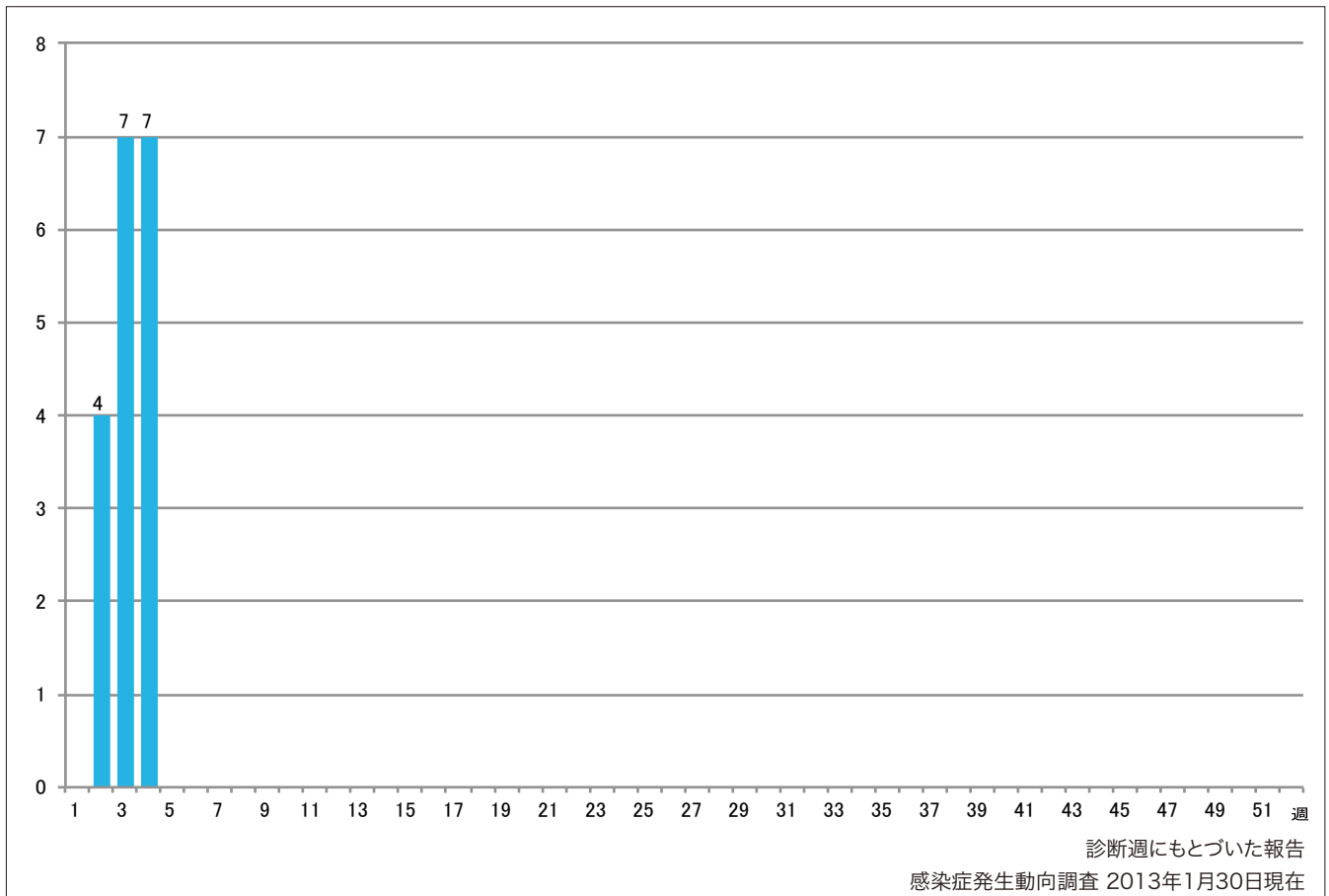


1. 週別麻疹報告数 2013年 第1~4週 (n=18)

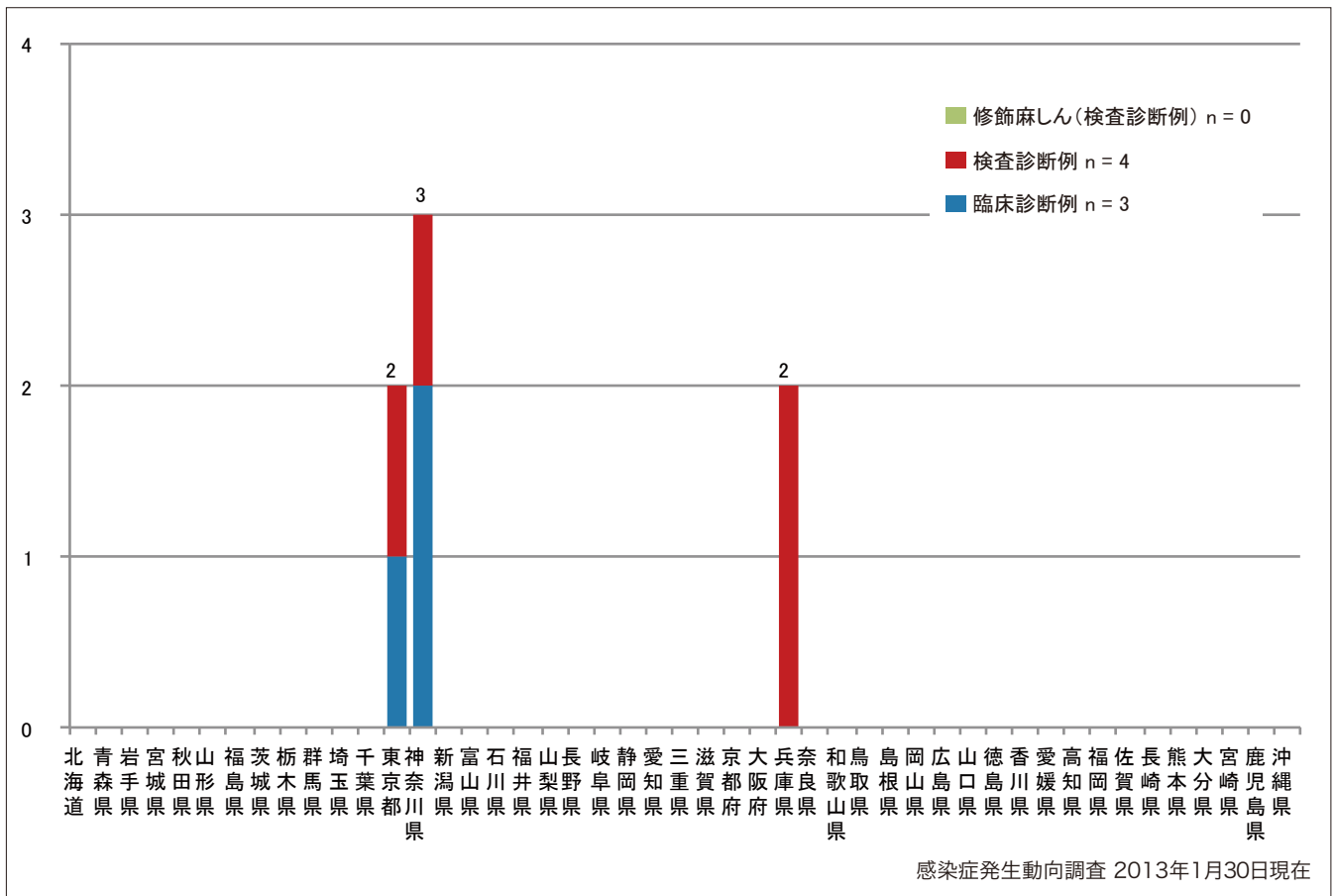
Weekly measles cases from week 1 to week 4 2013 (based on diagnosed week as of January 30, 2013).



2. 都道府県別病型別麻疹報告数2013年 第4週 (n=7)

Reported measles cases by prefecture and methods of diagnosis in week 4, 2013 (as of January 30, 2013).

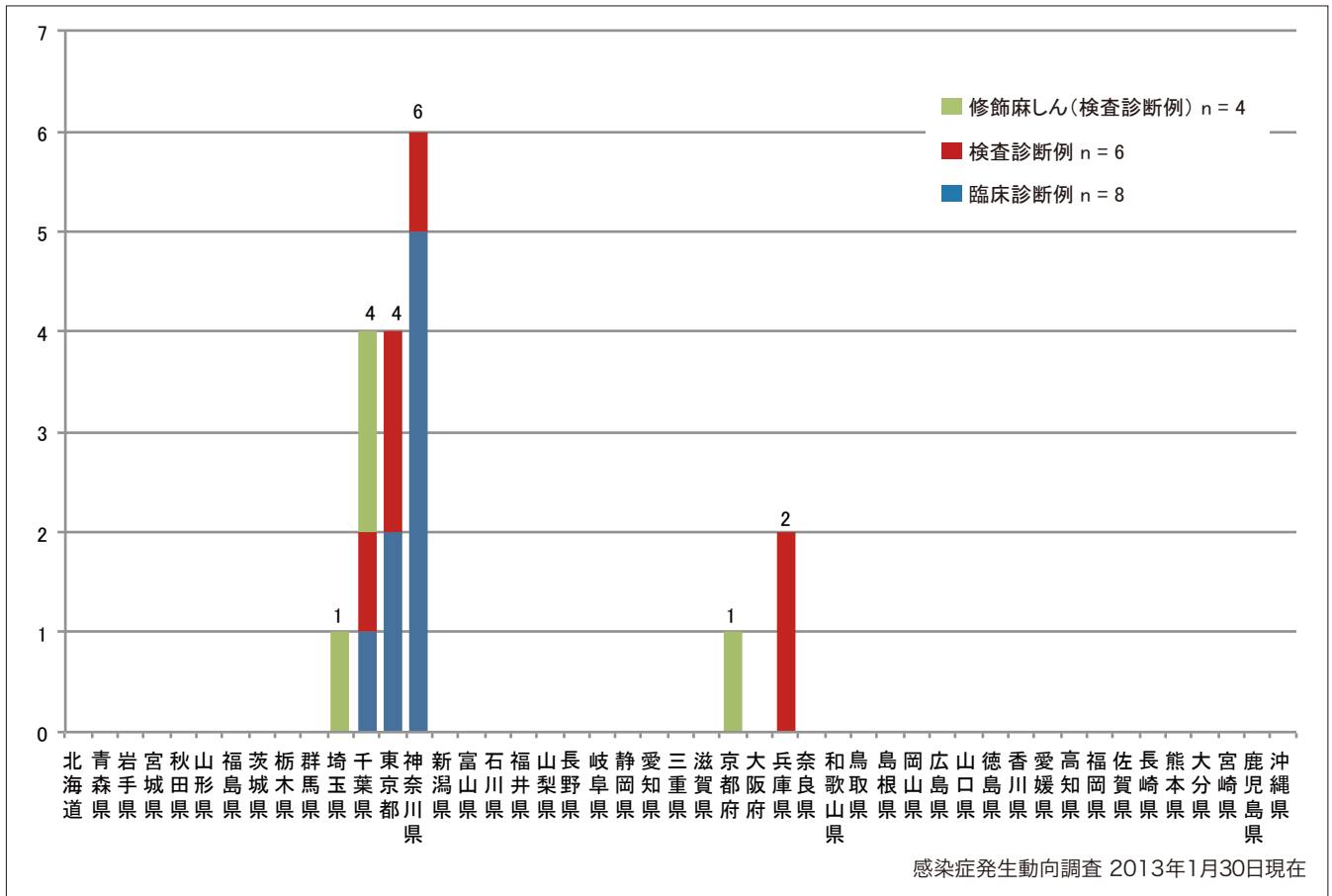
■ Clinically diagnosed ■ Laboratory diagnosed ■ Modified measles, laboratory diagnosed



3. 都道府県別病型別麻疹累積報告数 2013年 第1~4週 (n=18)

Cumulative measles cases by prefecture and methods of diagnosis from week 1 to week 4, 2013 (as of January 30, 2013).

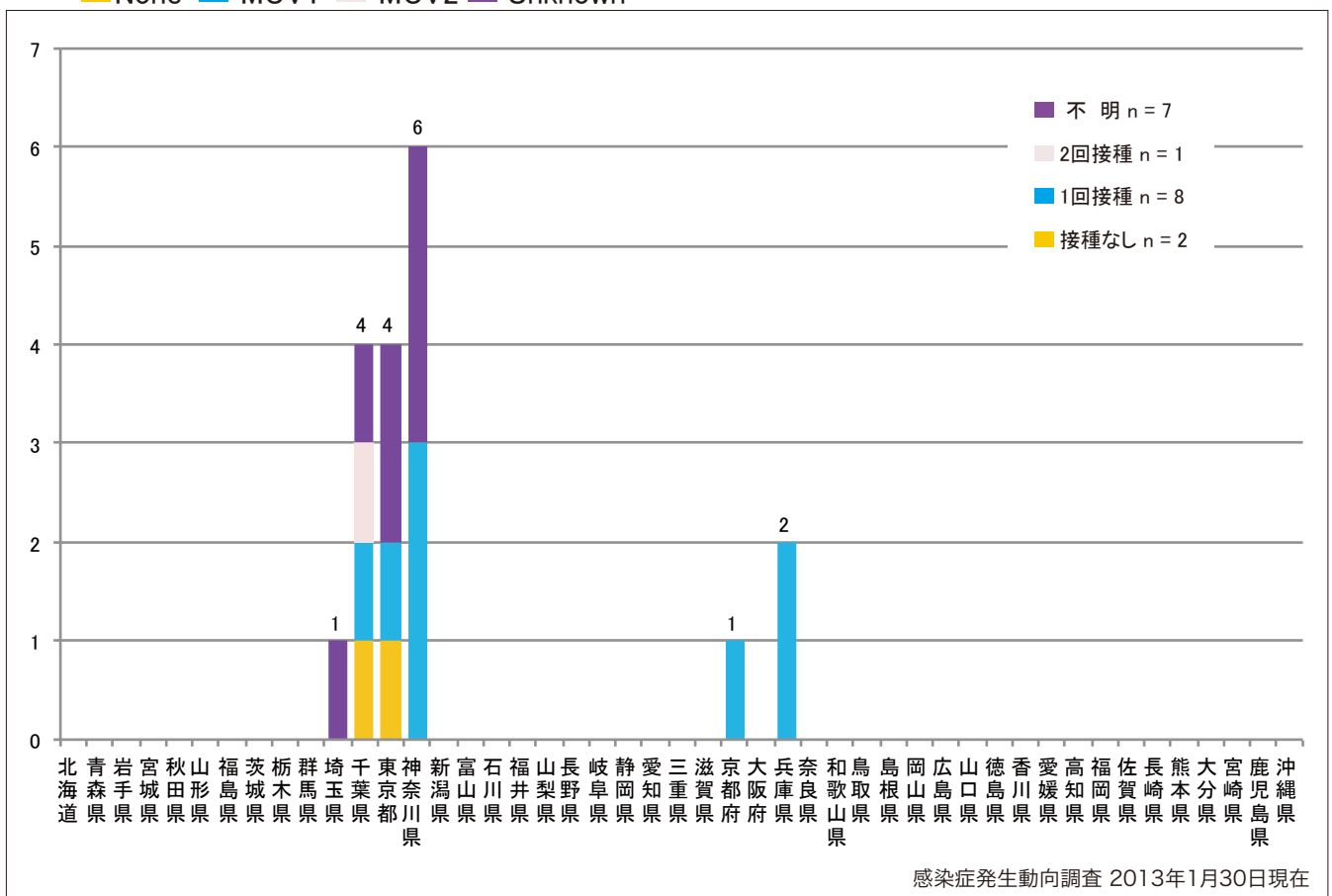
■ Clinically diagnosed ■ Laboratory diagnosed ■ Modified measles, laboratory diagnosed



4. 都道府県別接種歴別麻疹累積報告数 2013年 第1~4週 (n=18)

Cumulative measles cases by prefecture and vaccinated status from week 1 to week 4, 2013 (as of January 30, 2013).

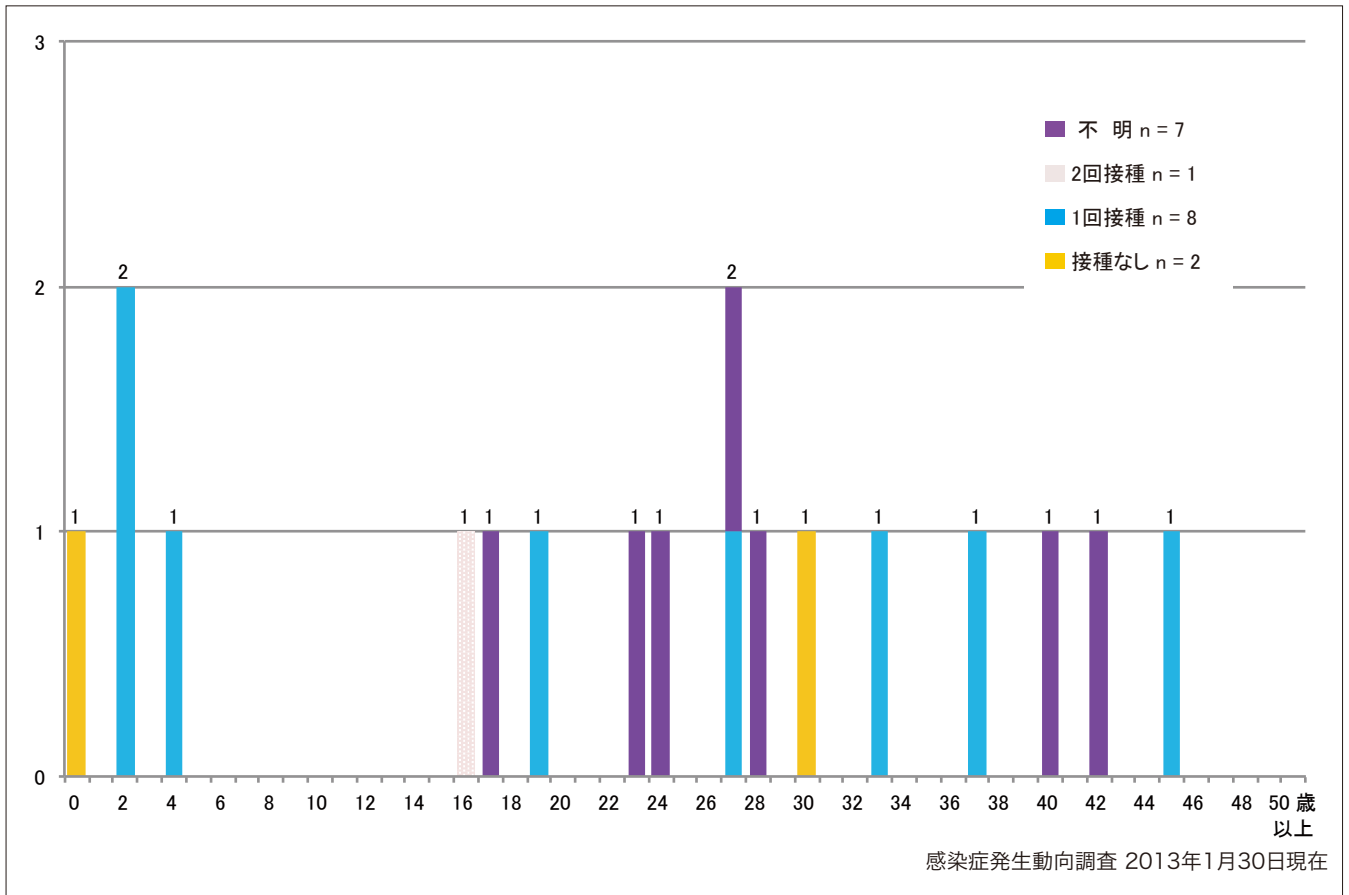
■ None ■ MCV1 ■ MCV2 ■ Unknown



5. 年齢群別接種歴別麻疹累積報告数 2013年 第1~4週 (n=18)

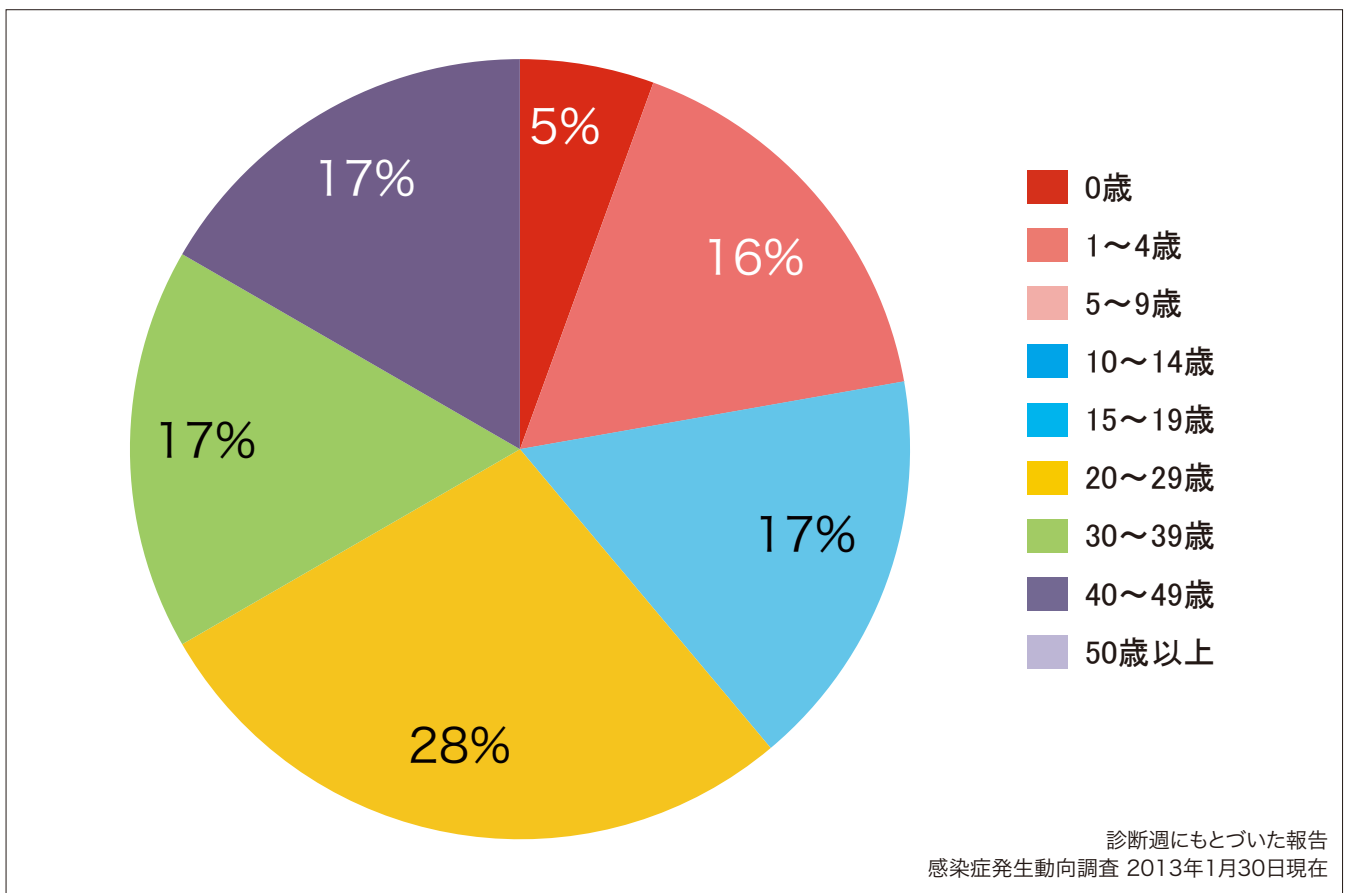
Cumulative measles cases by age and vaccinated status from week 1 to week 4, 2013
(as of January 30, 2013).

None MCV1 MCV2 Unknown



6. 年齢群別麻疹累積報告数割合 2013年 第1~4週 (n=18)

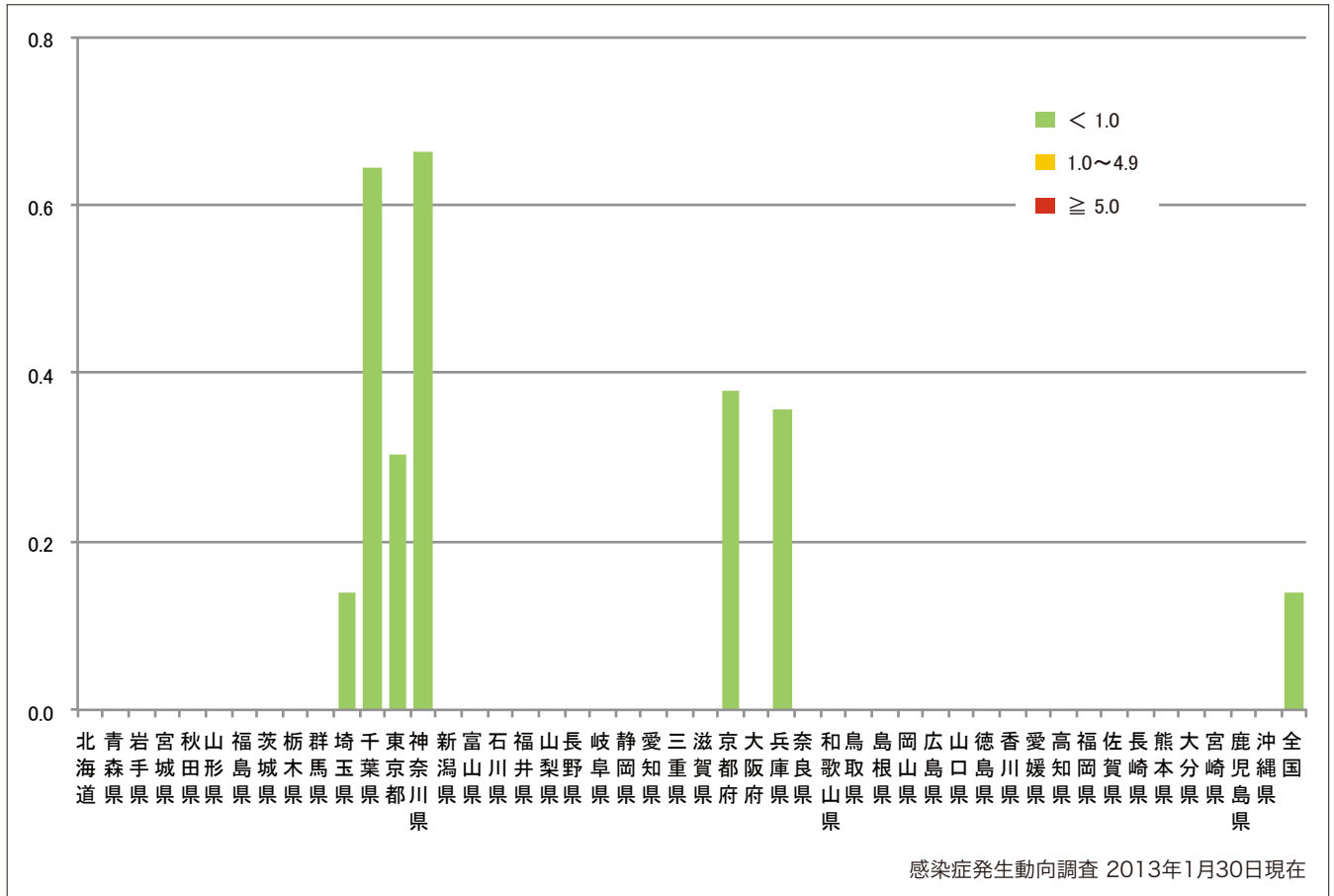
Percentage of cumulative measles cases by age group from week 1 to week 4, 2013
(as of January 30, 2013).



7. 都道府県別人口百万人あたり麻しん報告数 2013年 第1~4週 (n=18)

Number of reported cases per 1 million population by prefectures from week 1 to week 4, 2013 (as of January 30, 2013).

■ < 1.0 ■ 1.0~4.9 ■ ≥ 5.0



8. 都道府県別麻疹週別報告状況 2013年 第1~04週 感染症発生動向調査

2013年01月30日現在

Weekly measles cases from week 1 to week 04, 2013 (based on diagnosed week as of January 30, 2013)

報告数
No. of cases

