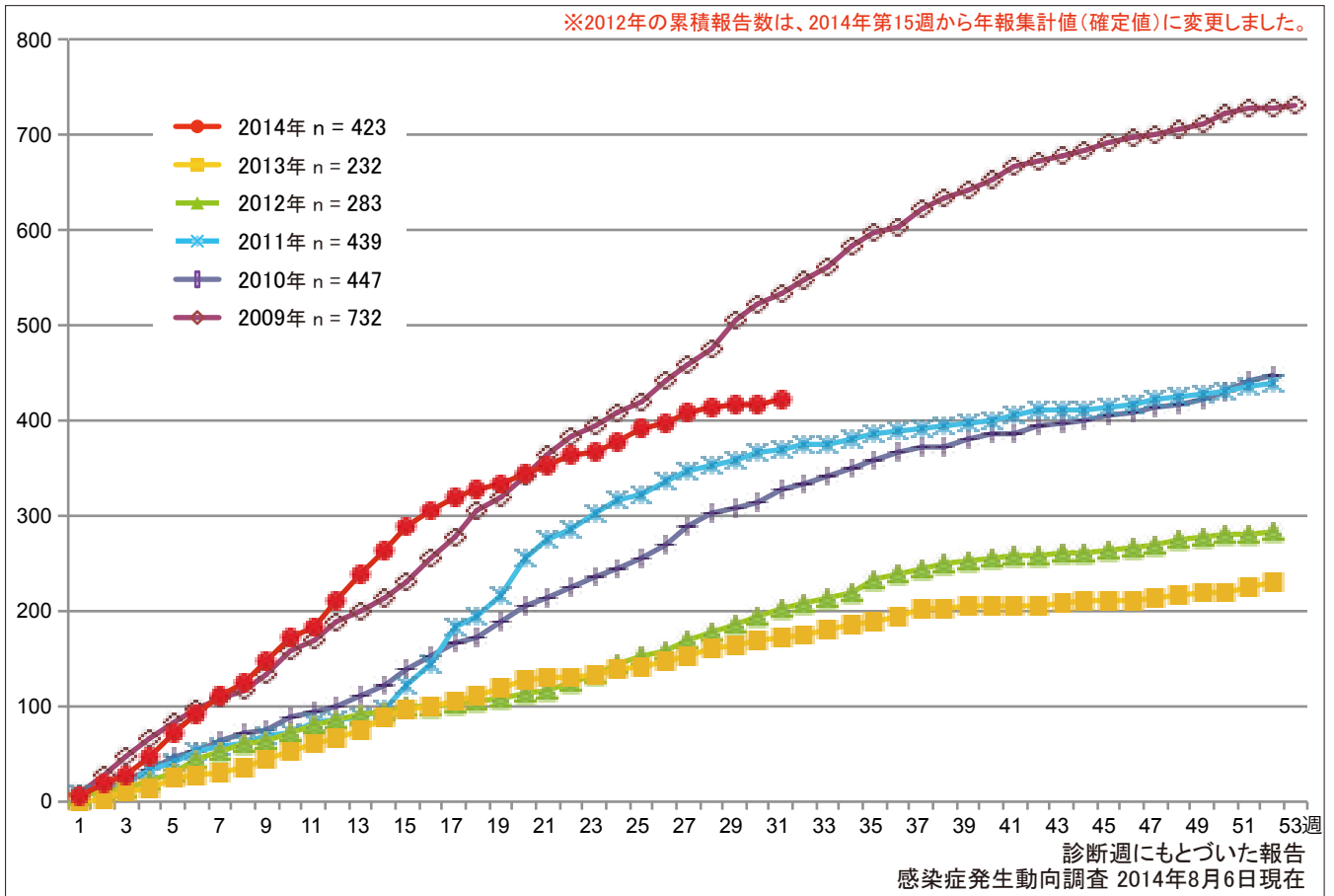


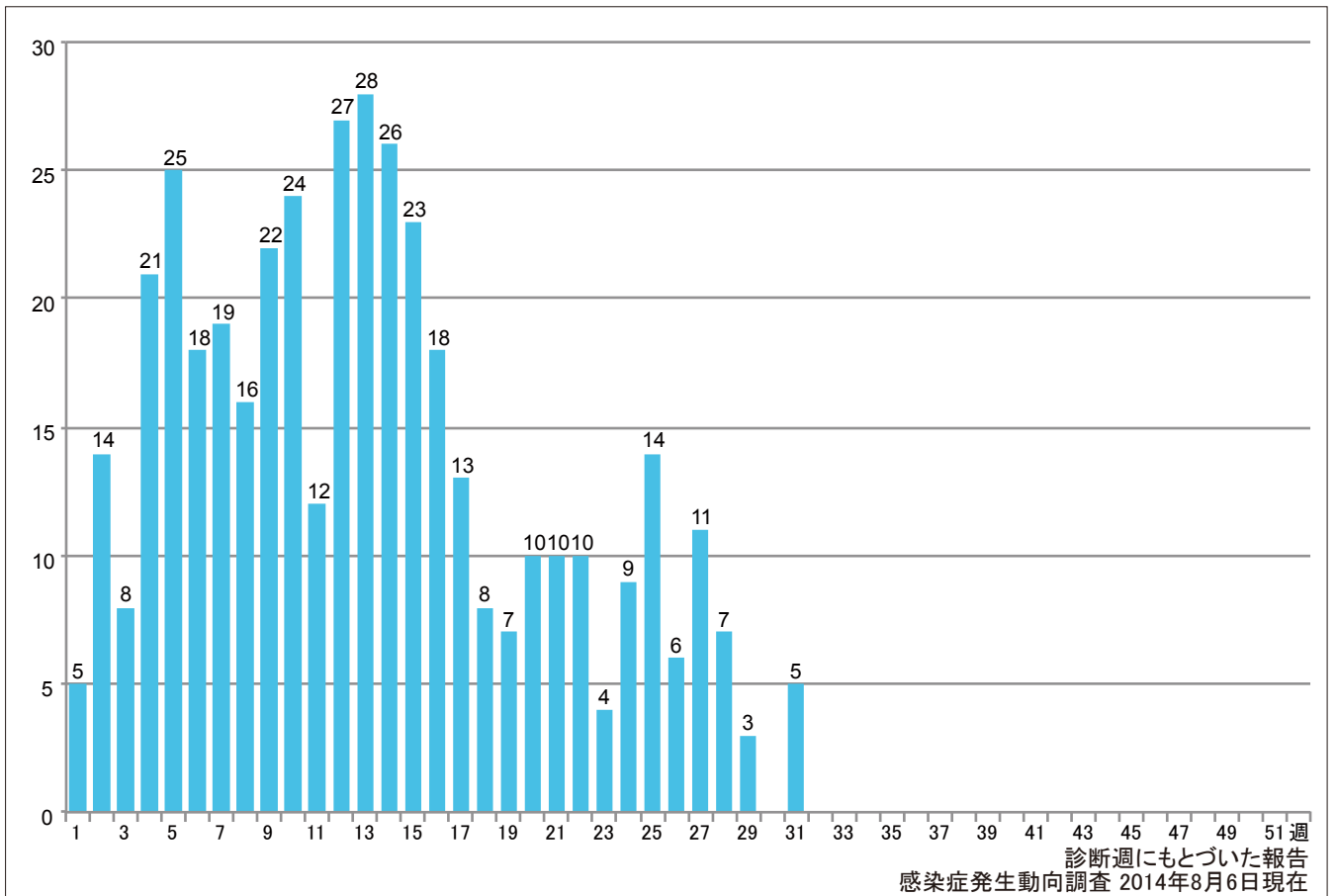
1. 麻疹累積報告数の推移 2009～2014年(第1～31週)

Cumulative number of measles cases by week, 2009-2014 (week1-31)
 (based on diagnosed week as of August 6, 2014).



2. 週別麻疹報告数 2014年 第1～31週(n=423)

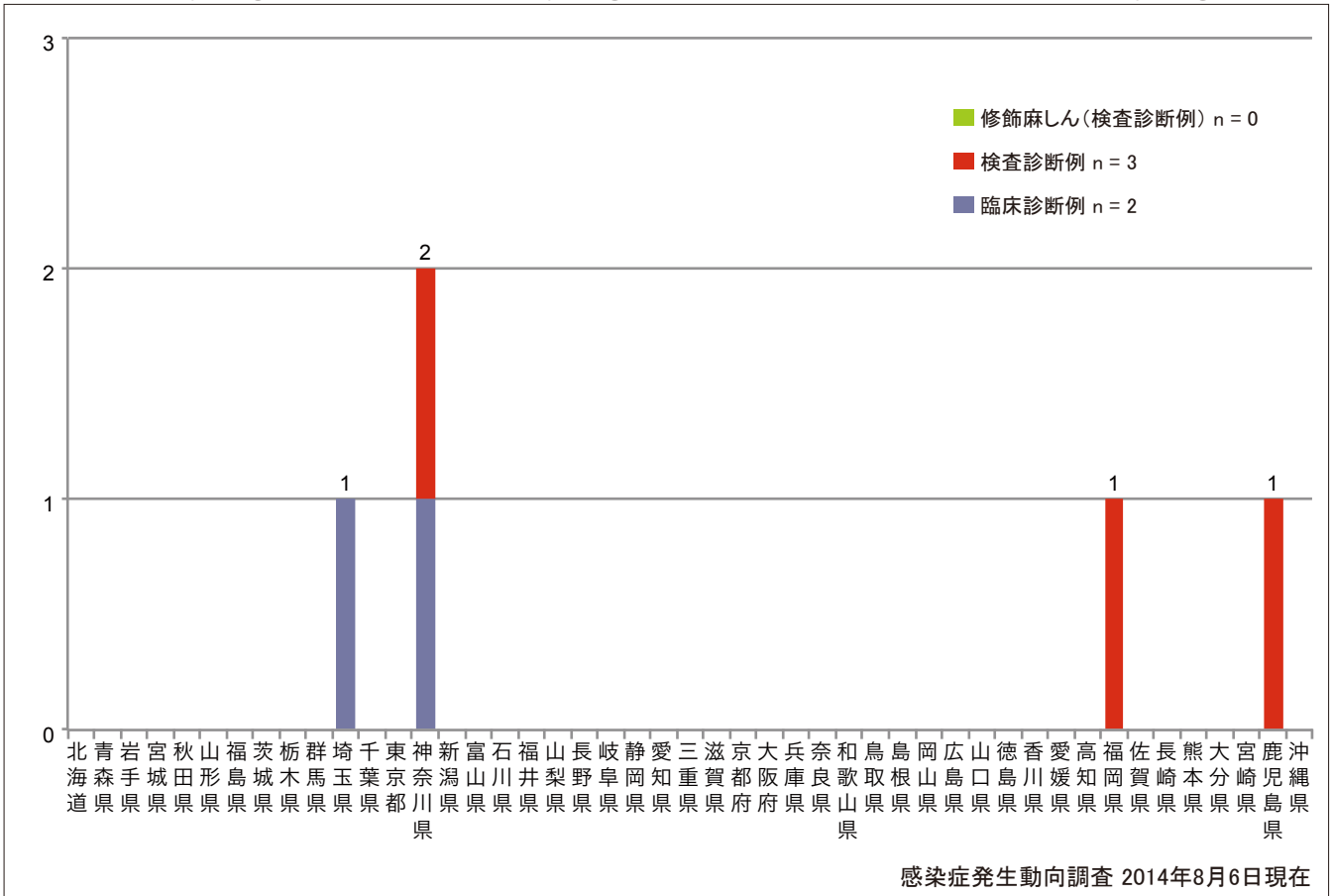
Weekly measles cases from week 1 to week 31, 2014 (based on diagnosed week as of August 6, 2014).



3. 都道府県別病型別麻疹報告数 2014年 第31週 (n=5)

Reported measles cases by prefecture and methods of diagnosis in week 31, 2014 (as of August 6, 2014).

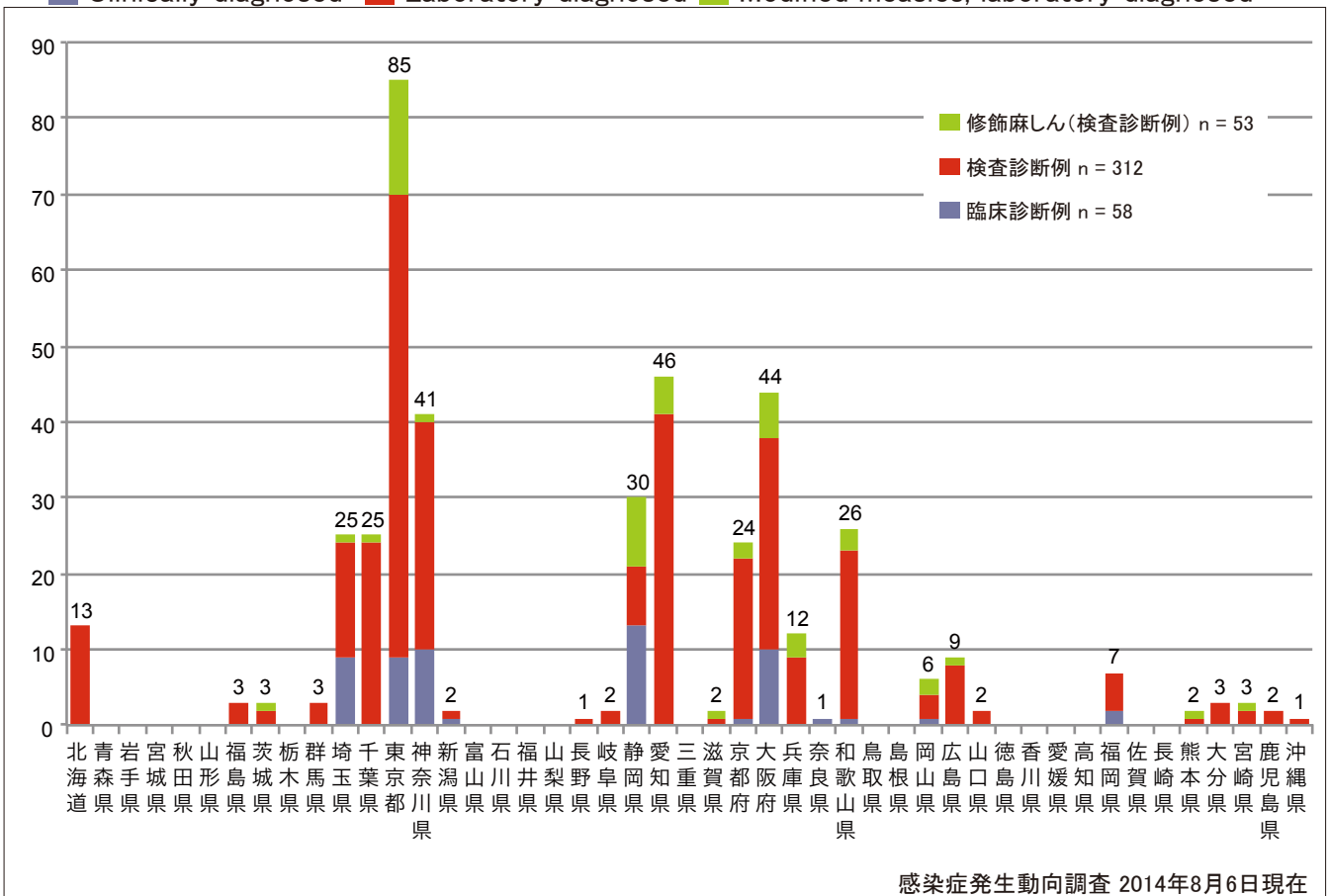
■ Clinically diagnosed ■ Laboratory diagnosed ■ Modified measles, laboratory diagnosed



4. 都道府県別病型別麻疹累積報告数 2014年 第1~31週 (n=423)

Cumulative measles cases by prefecture and methods of diagnosis from week 1 to week 31, 2014 (as of August 6, 2014).

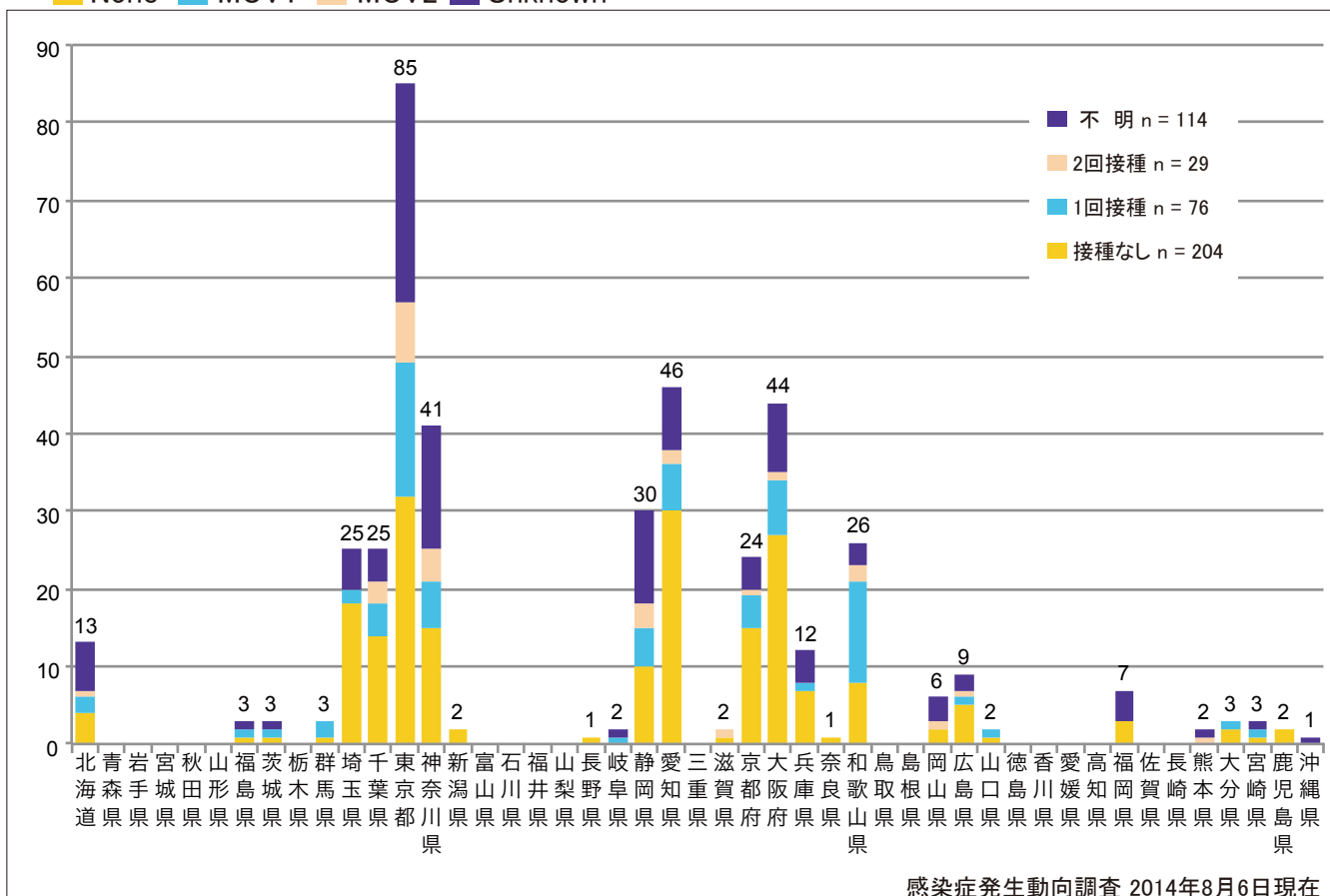
■ Clinically diagnosed ■ Laboratory diagnosed ■ Modified measles, laboratory diagnosed



5. 都道府県別接種歴別麻疹累積報告数 2014年 第1~31週 (n=423)

Cumulative measles cases by prefecture and vaccinated status from week 1 to week 31, 2014 (as of August 6, 2014).

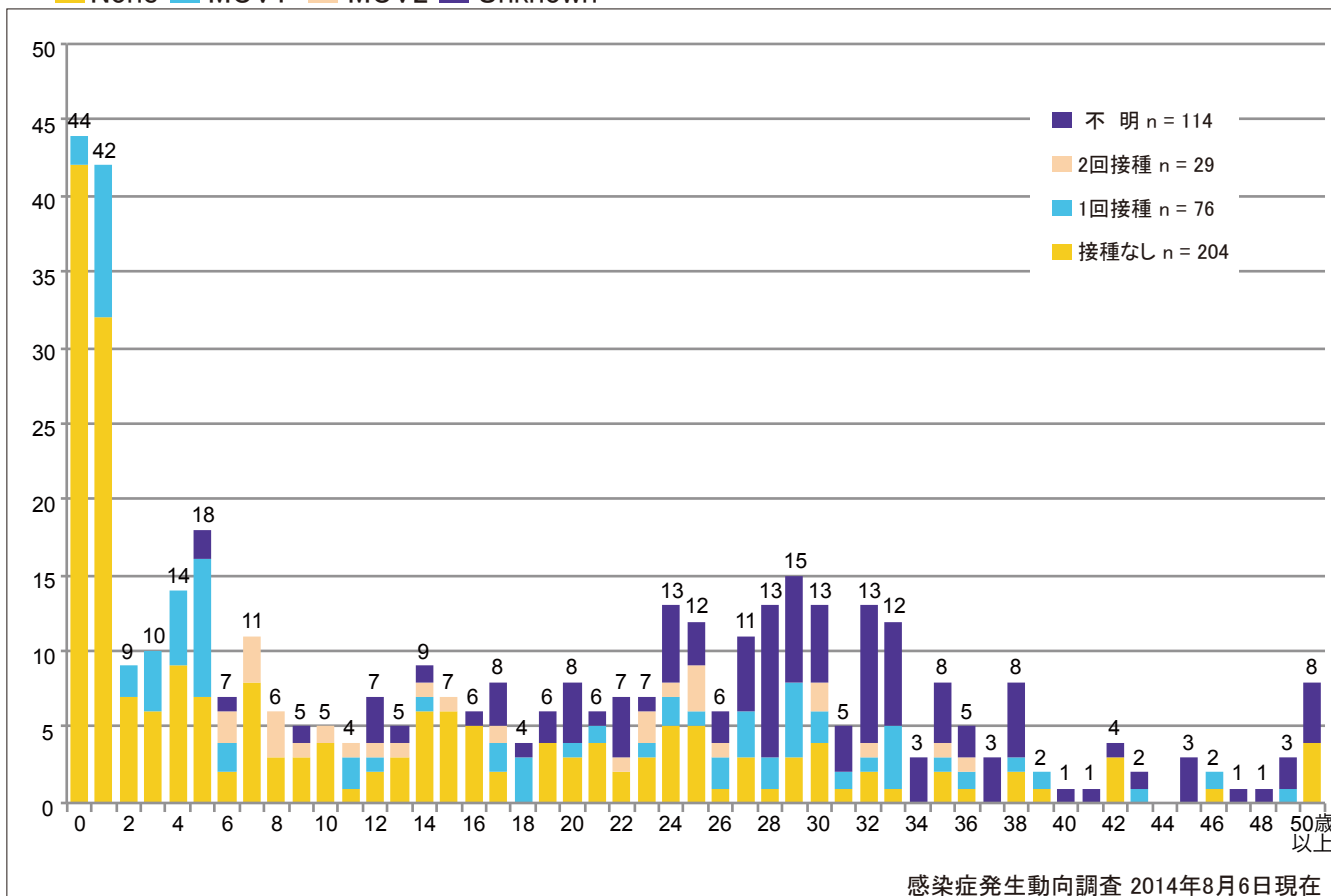
■ None ■ MCV1 ■ MCV2 ■ Unknown



6. 年齢群別接種歴別麻疹累積報告数 2014年 第1~31週 (n=423)

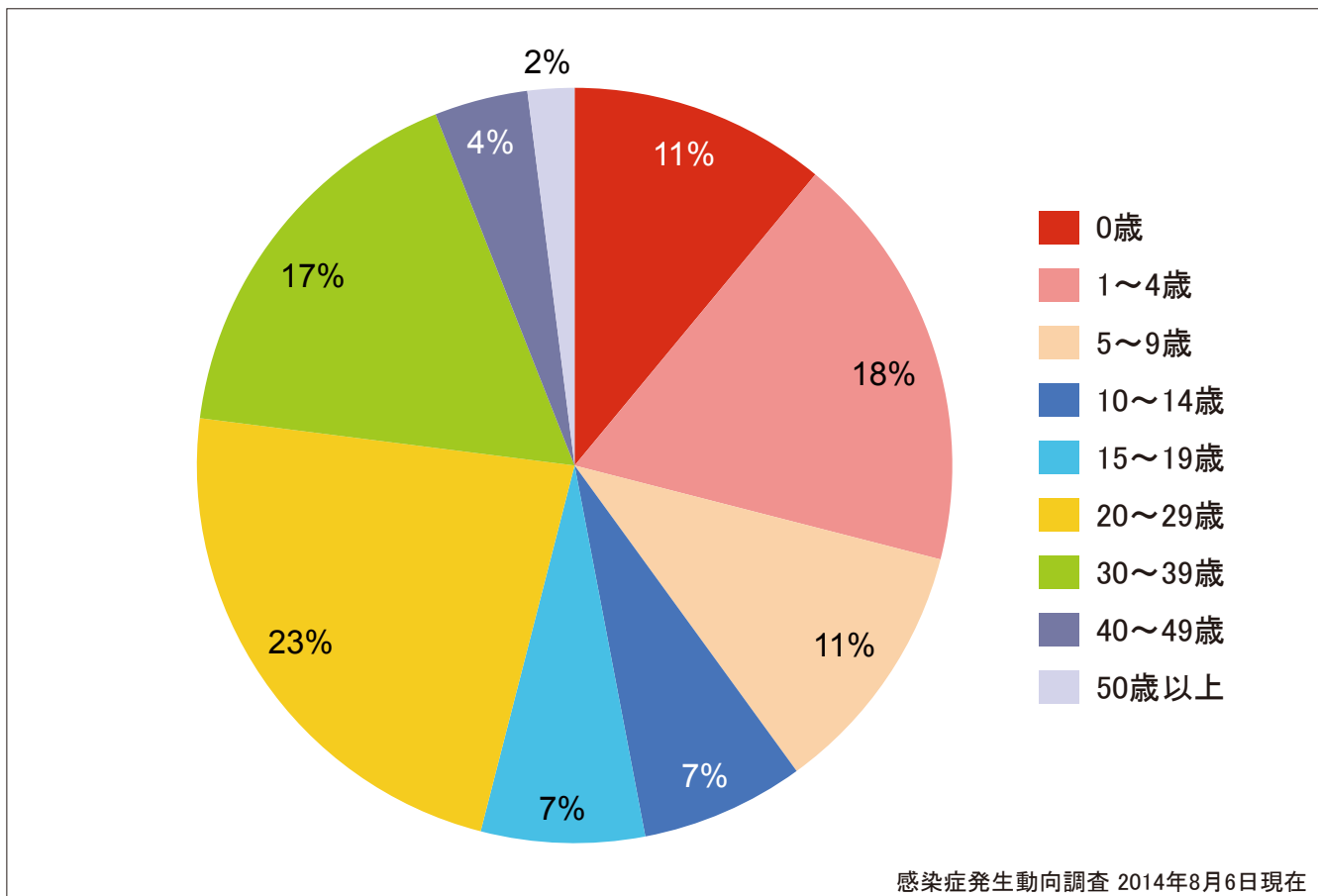
Cumulative measles cases by age and vaccinated status from week 1 to week 31, 2014 (as of August 6, 2014).

■ None ■ MCV1 ■ MCV2 ■ Unknown



7. 年齢群別麻疹累積報告数割合 2014年 第1～31週 (n=423)

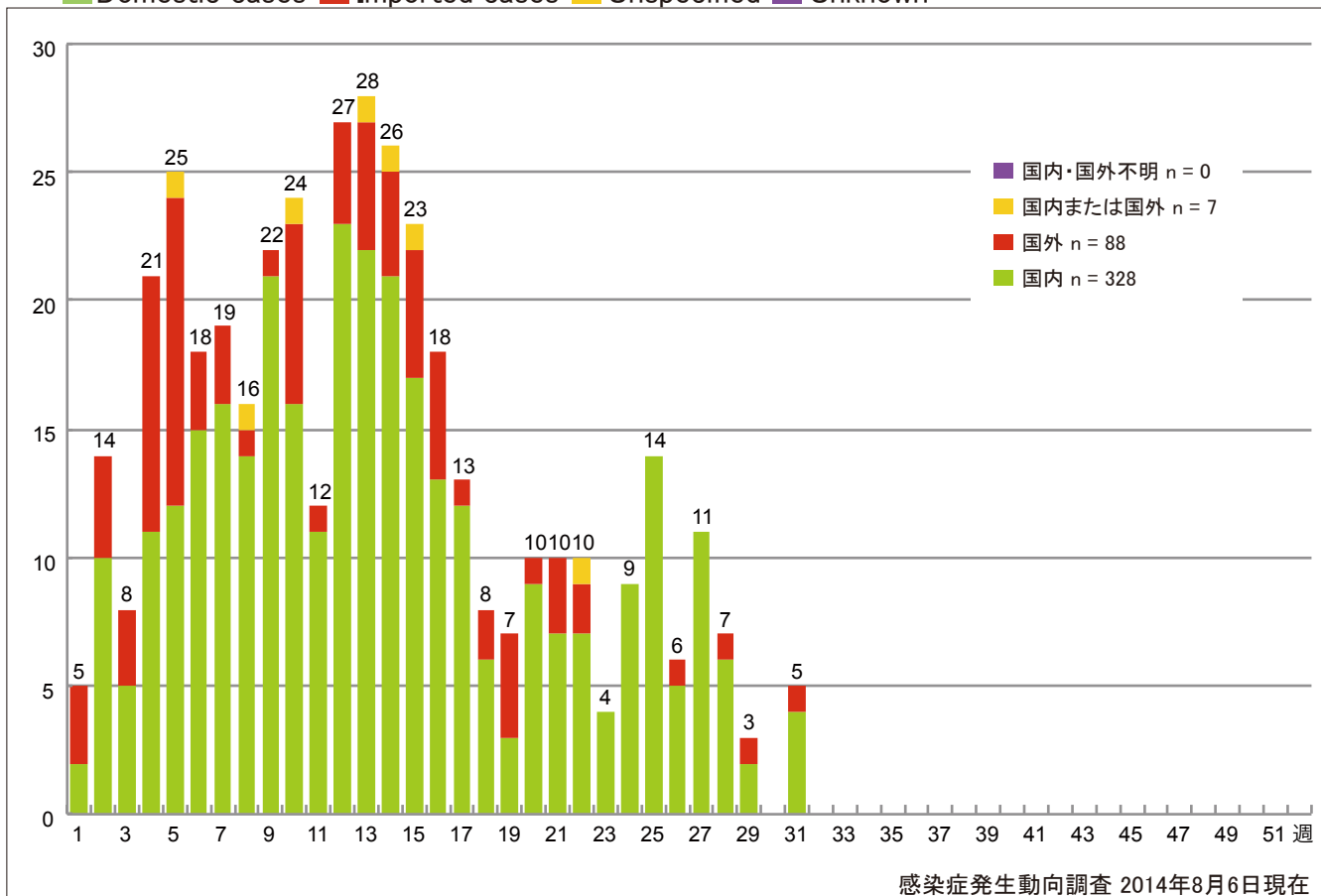
Percentage of cumulative measles cases by age group from week 1 to week 31, 2014 (as of August 6, 2014).



8. 週別推定感染地域(国内・外)別麻疹報告数 2014年 第1～31週 (n=423)

Weekly measles cases by acquired region from week 1 to week 31, 2014 (based on diagnosed week as of August 6, 2014).

Domestic cases Imported cases Unspecified Unknown

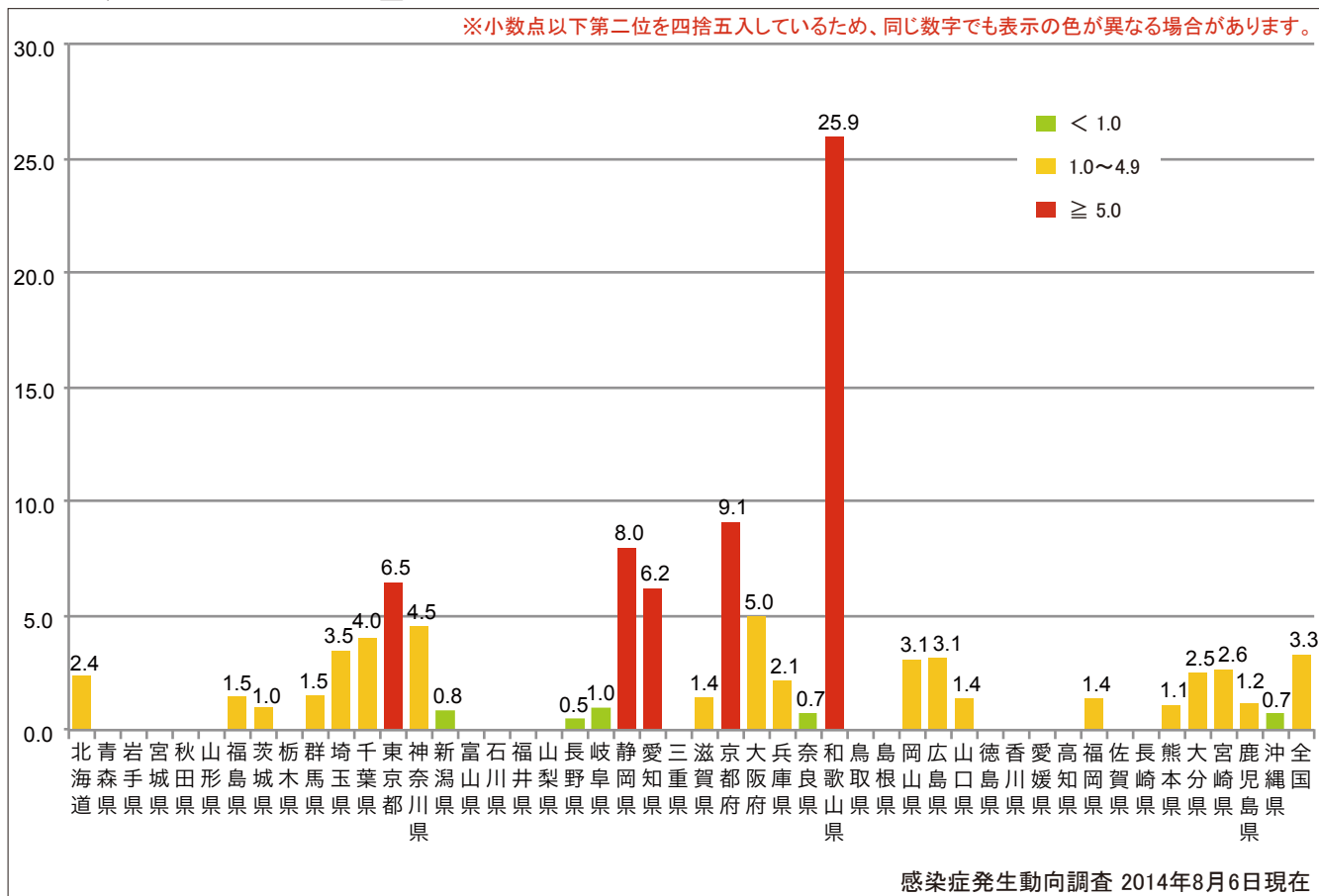


9. 都道府県別人口百万人あたり麻しん報告数 2014年 第1~31週 (n=423)

Number of reported cases per 1 million population by prefectures from week 1 to week 31, 2014 (as of August 6, 2014).

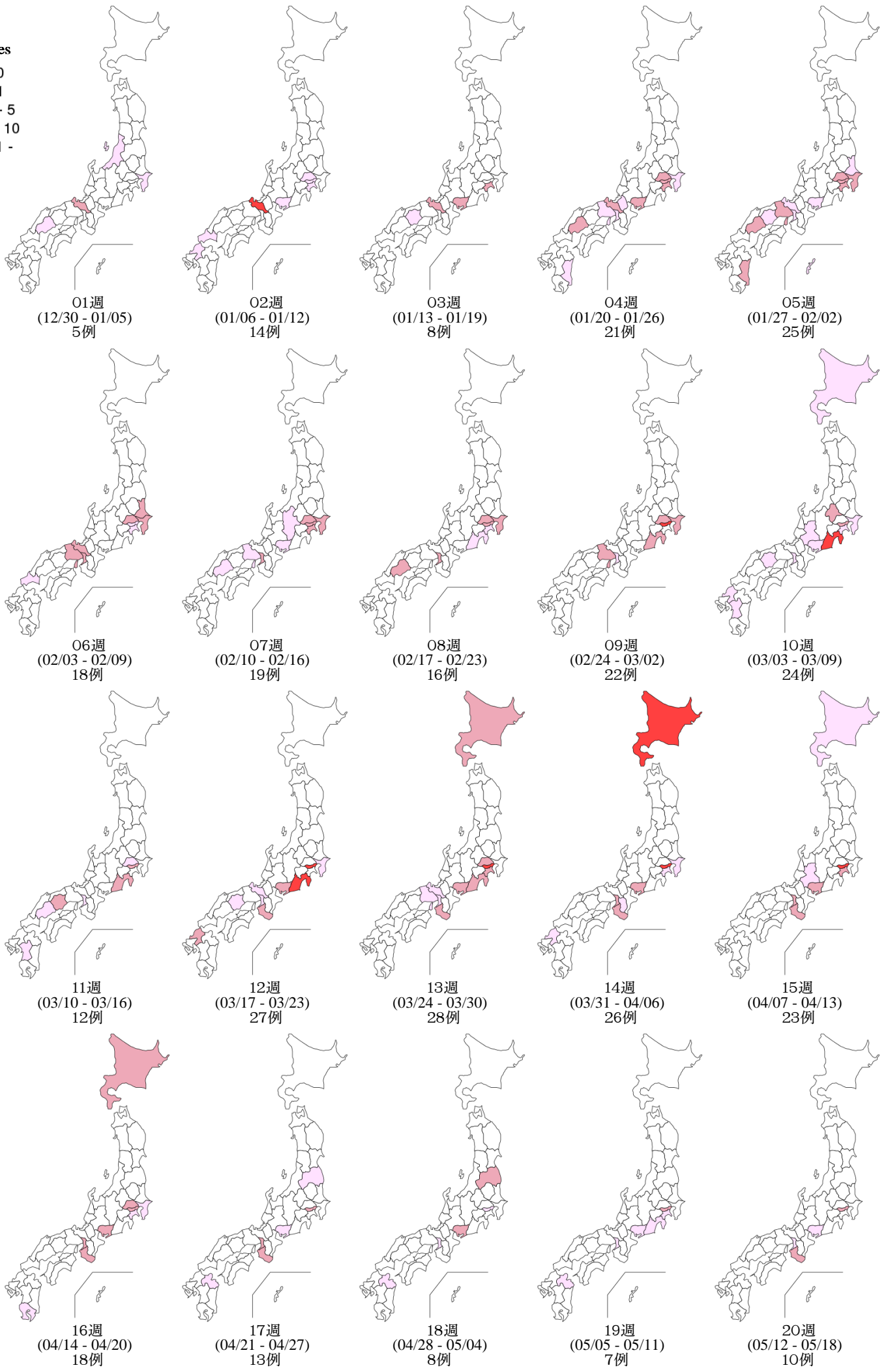
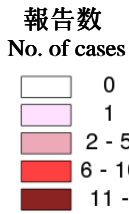
■ < 1.0 ■ 1.0~4.9 ■ ≥ 5.0

※小数点以下第二位を四捨五入しているため、同じ数字でも表示の色が異なる場合があります。



10. 都道府県別麻疹週別報告状況 2014年 第1~31週 感染症発生動向調査
 Weekly measles cases from week 1 to week 31, 2014 (based on diagnosed week as of August 06, 2014)

2014年08月06日現在



10. 都道府県別麻疹週別報告状況 2014年 第1~31週 感染症発生動向調査

2014年08月06日現在

Weekly measles cases from week 1 to week 31, 2014 (based on diagnosed week as of August 06, 2014)

報告数
No. of cases

