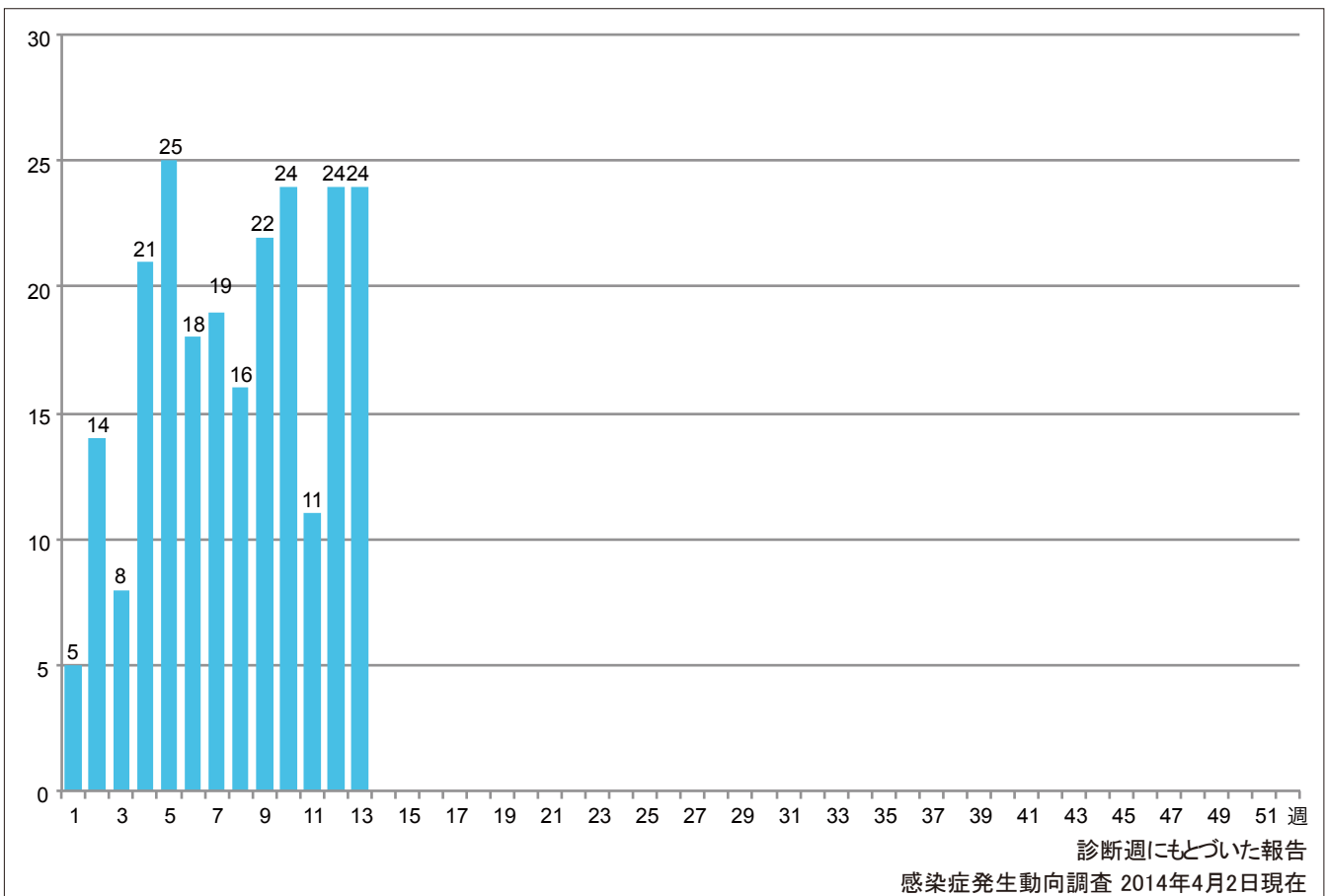


1. 週別麻疹報告数 2014年 第1~13週 (n=231)

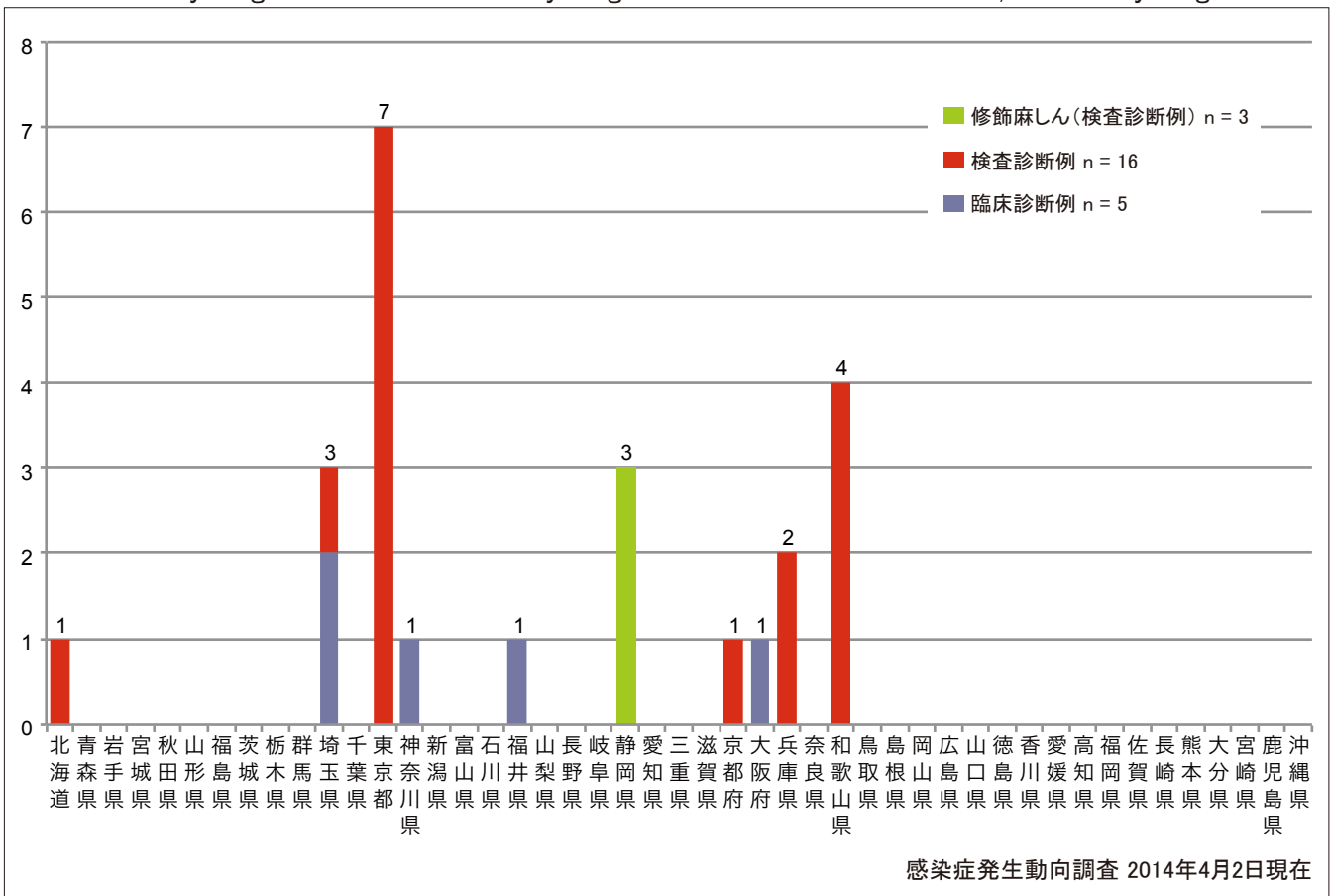
Weekly measles cases from week 1 to week 13, 2014 (based on diagnosed week as of April 2, 2014).



2. 都道府県別病型別麻疹報告数 2014年 第13週 (n=24)

Reported measles cases by prefecture and methods of diagnosis in week 13, 2014 (as of April 2, 2014).

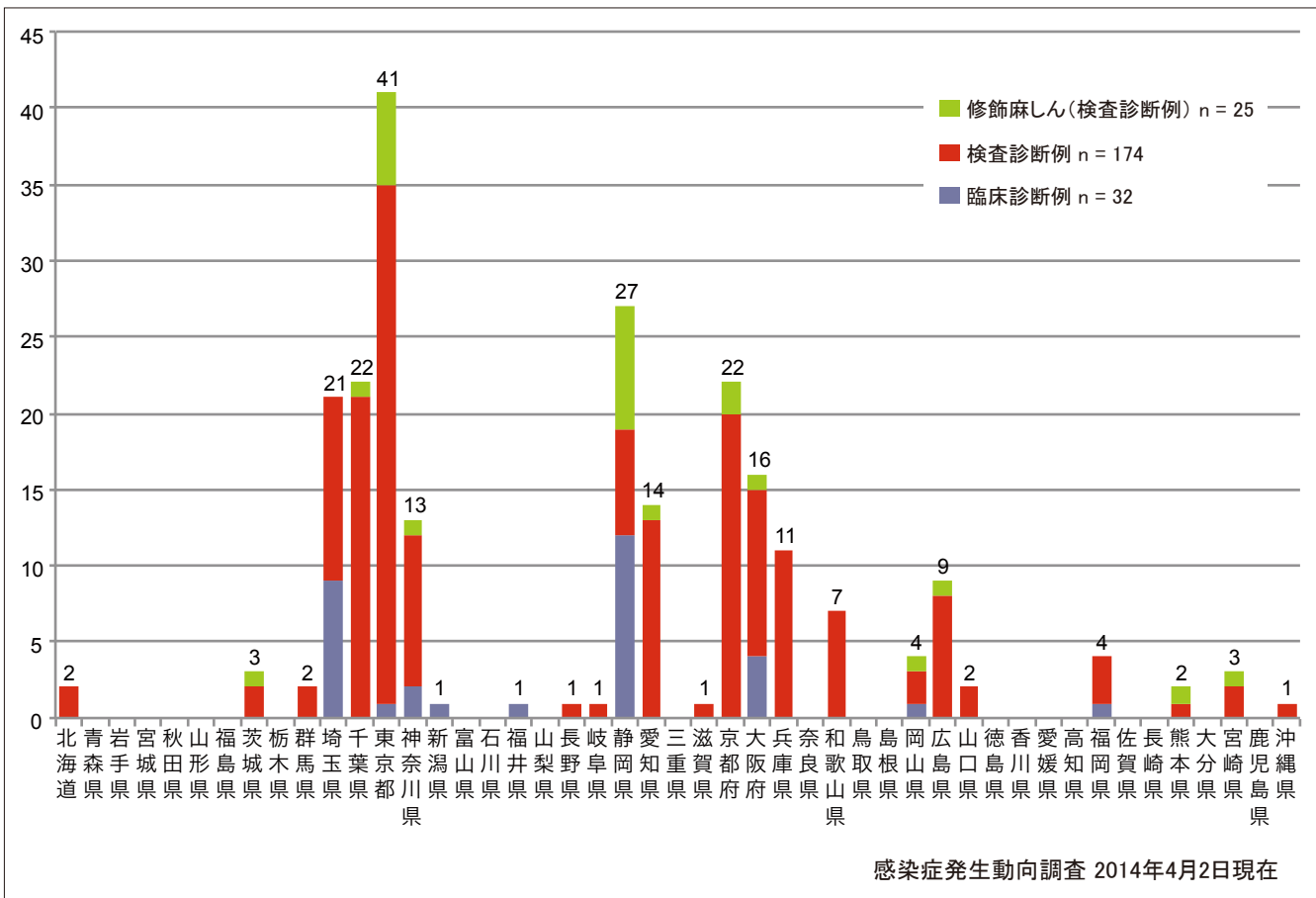
■ Clinically diagnosed ■ Laboratory diagnosed ■ Modified measles, laboratory diagnosed



3. 都道府県別病型別麻疹累積報告数 2014年 第1~13週(n=231)

Cumulative measles cases by prefecture and methods of diagnosis from week 1 to week 13, 2014 (as of April 2, 2014).

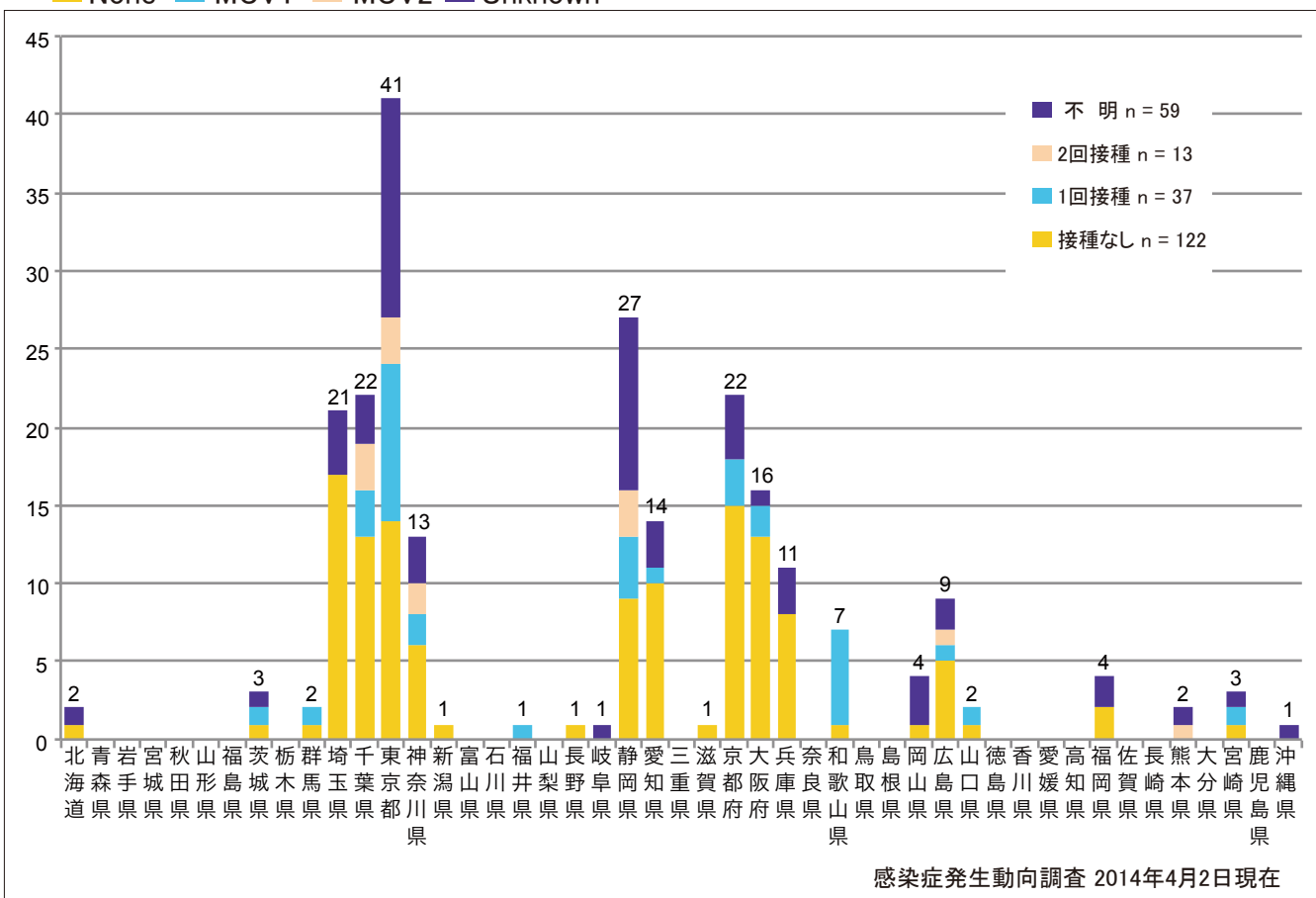
■ Clinically diagnosed ■ Laboratory diagnosed ■ Modified measles, laboratory diagnosed



4. 都道府県別接種歴別麻疹累積報告数 2014年 第1~13週(n=231)

Cumulative measles cases by prefecture and vaccinated status from week 1 to week 13, 2014 (as of April 2, 2014).

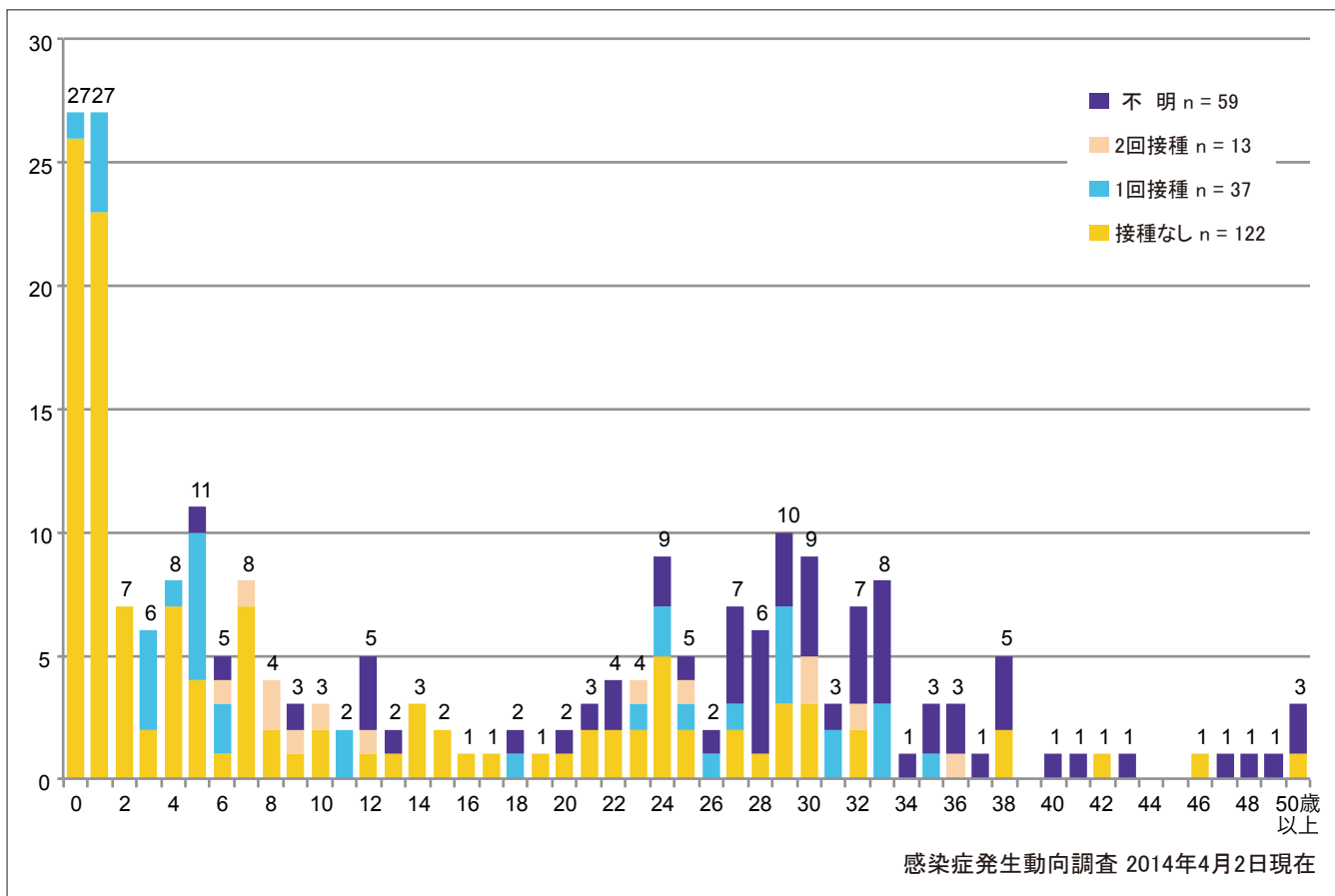
■ None ■ MCV1 ■ MCV2 ■ Unknown



5. 年齢群別接種歴別麻疹累積報告数 2014年 第1～13週(n=231)

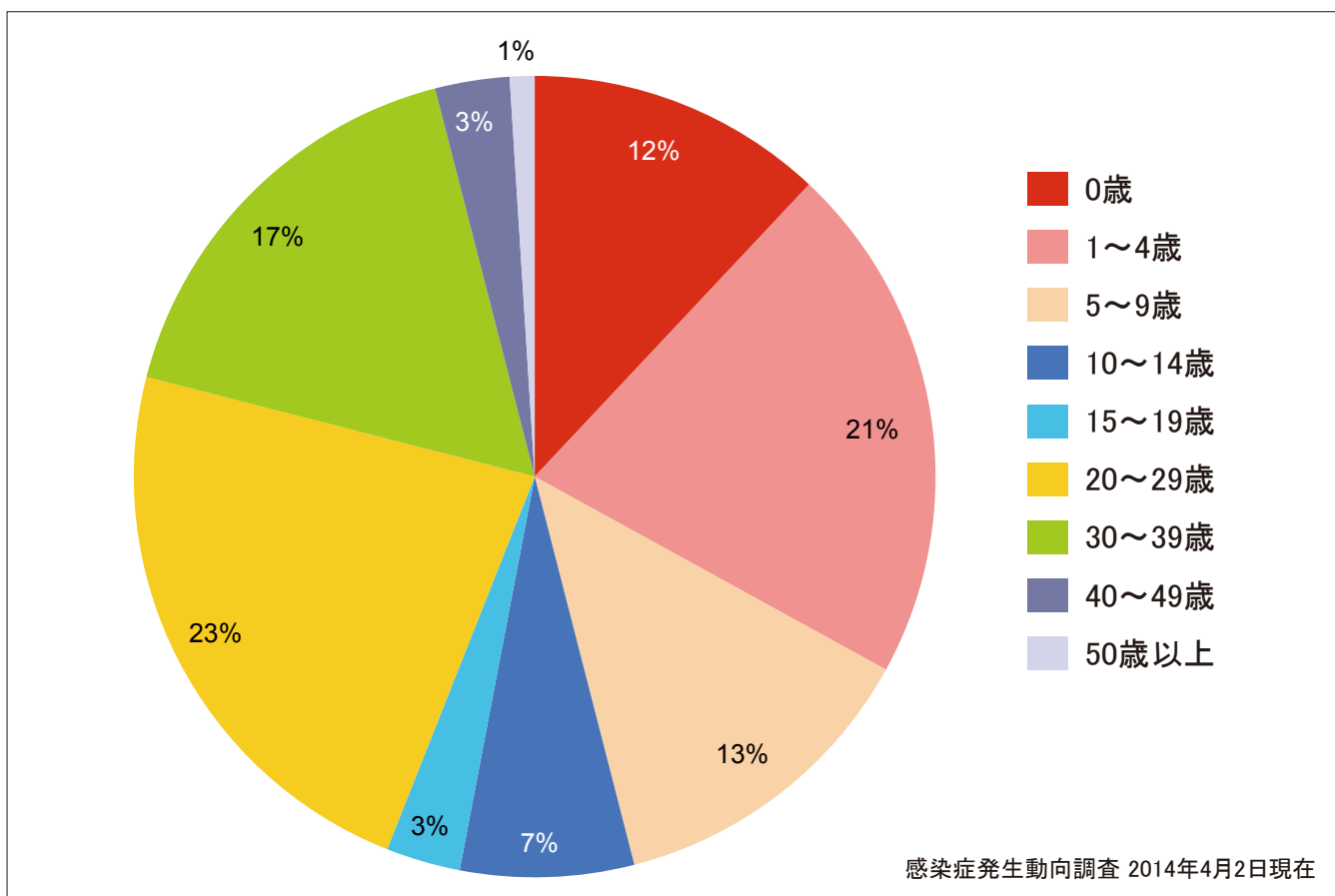
Cumulative measles cases by age and vaccinated status from week 1 to week 13, 2014 (as of April 2, 2014).

■ None ■ MCV1 ■ MCV2 ■ Unknown



6. 年齢群別麻疹累積報告数割合 2014年 第1～13週(n=231)

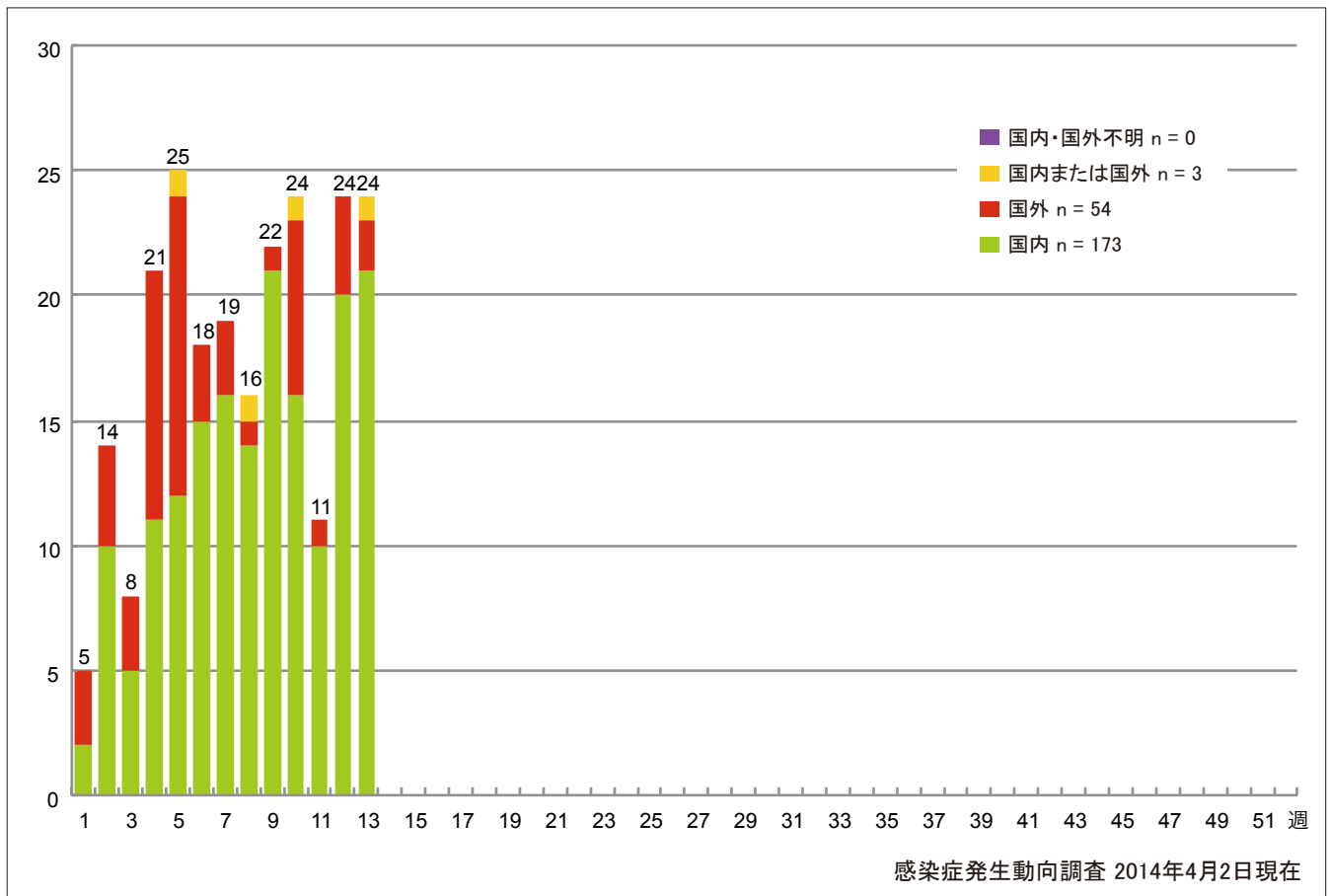
Percentage of cumulative measles cases by age group from week 1 to week 13, 2014 (as of April 2, 2014).



7. 週別推定感染地域(国内・外)別麻疹報告数 2014年 第1~13週(n=231)

Weekly measles cases by acquired region from week 1 to week 13, 2014
(based on diagnosed week as of April 2, 2014).

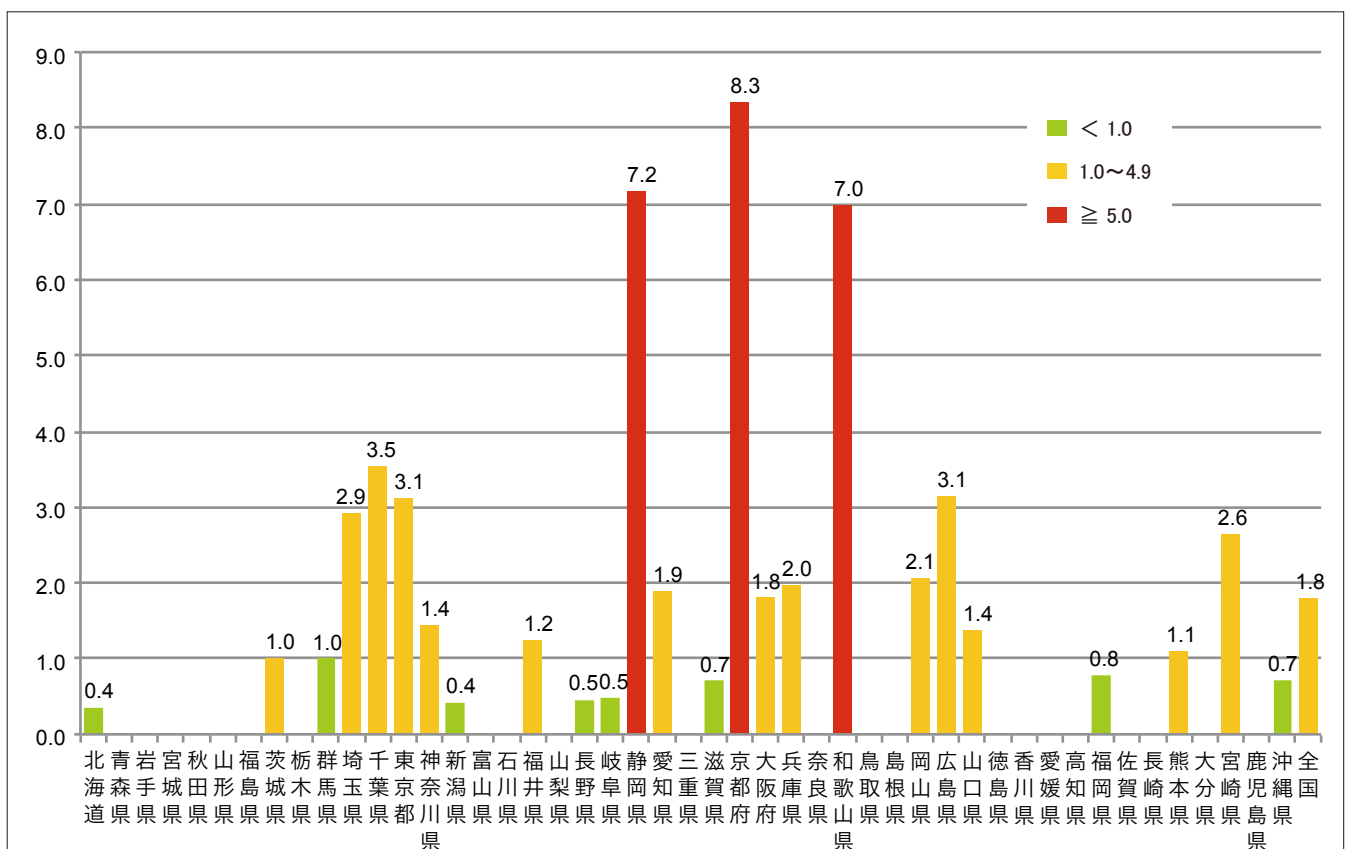
■ Domestic cases ■ Imported cases ■ Unspecified ■ Unknown



8. 都道府県別人口百万人あたり麻疹報告数 2014年 第1~13週(n=231)

Number of reported cases per 1 million population by prefectures from week 1 to week 13, 2014
(as of April 2, 2014).

■ <1.0 ■ 1.0~4.9 ■ ≥5.0



9. 都道府県別麻疹週別報告状況 2014年 第1~13週 感染症発生動向調査
 Weekly measles cases from week 1 to week 13, 2014 (based on diagnosed week as of April 02, 2014)

2014年04月02日現在

