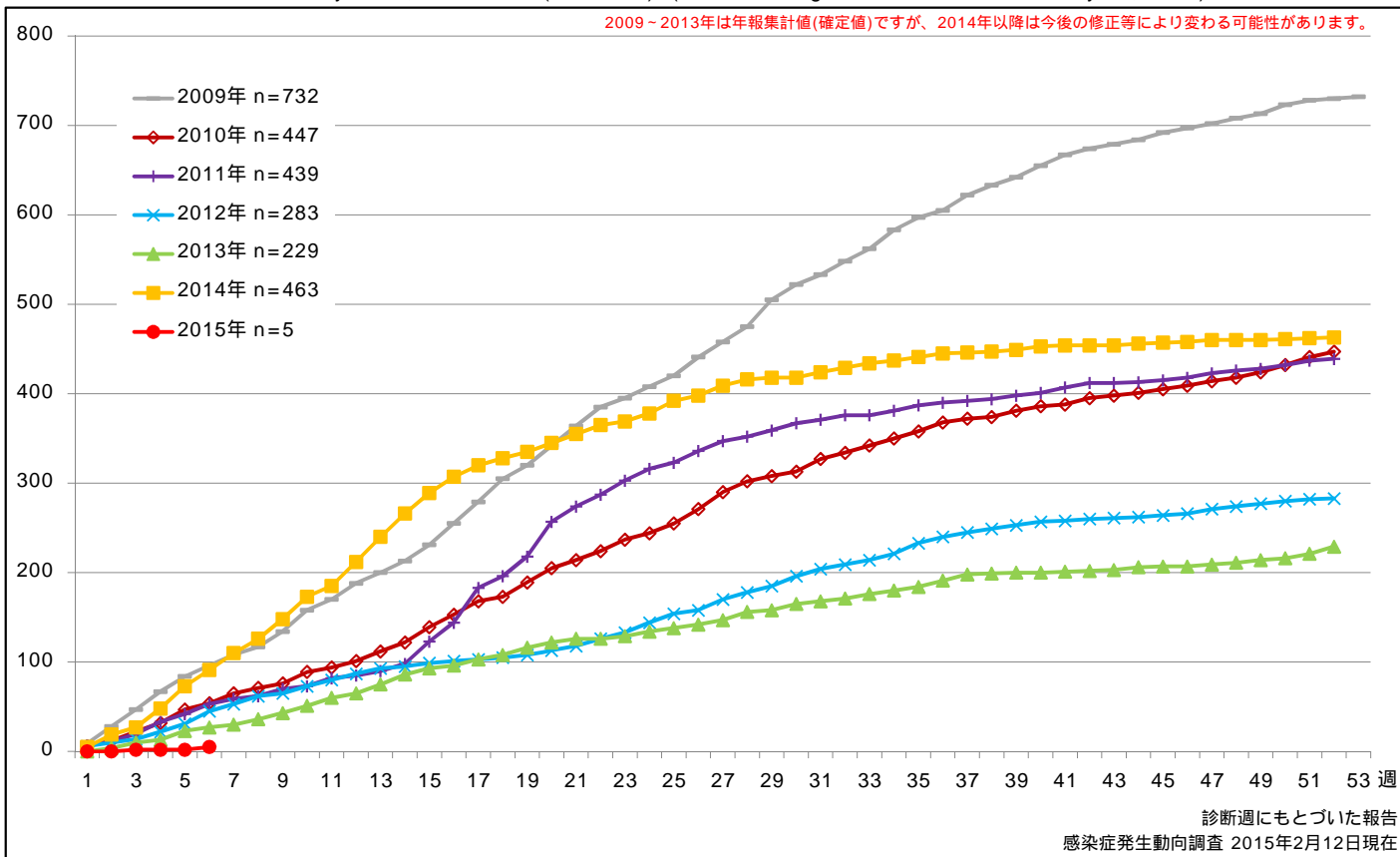


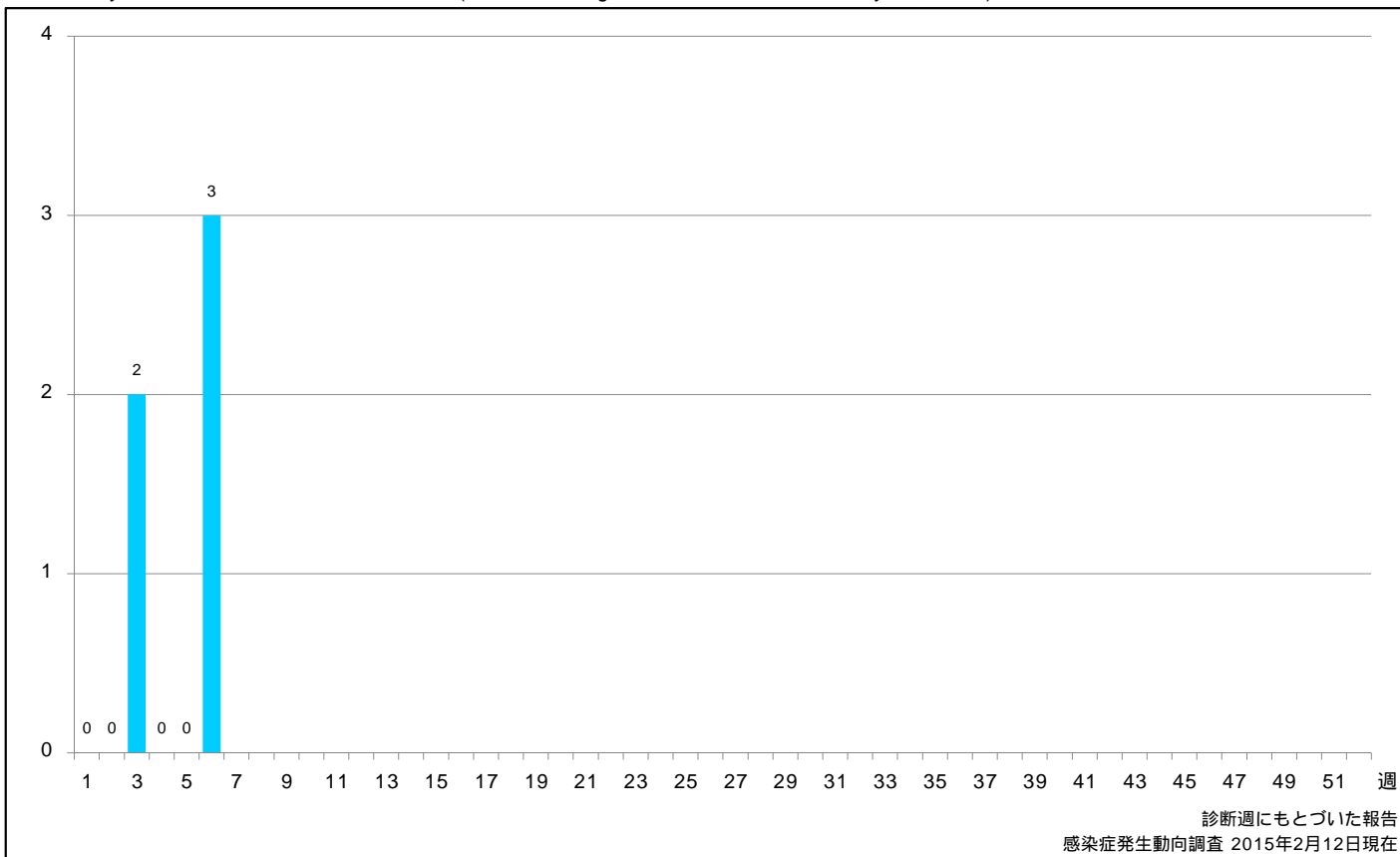
1. 麻疹累積報告数の推移 2009～2015年 (第1～6週)

Cumulative measles cases by week, 2009-2015 (week 1-6) (based on diagnosed week as of February 12, 2015)



2. 週別麻疹報告数 2015年 第1～6週 (n=5)

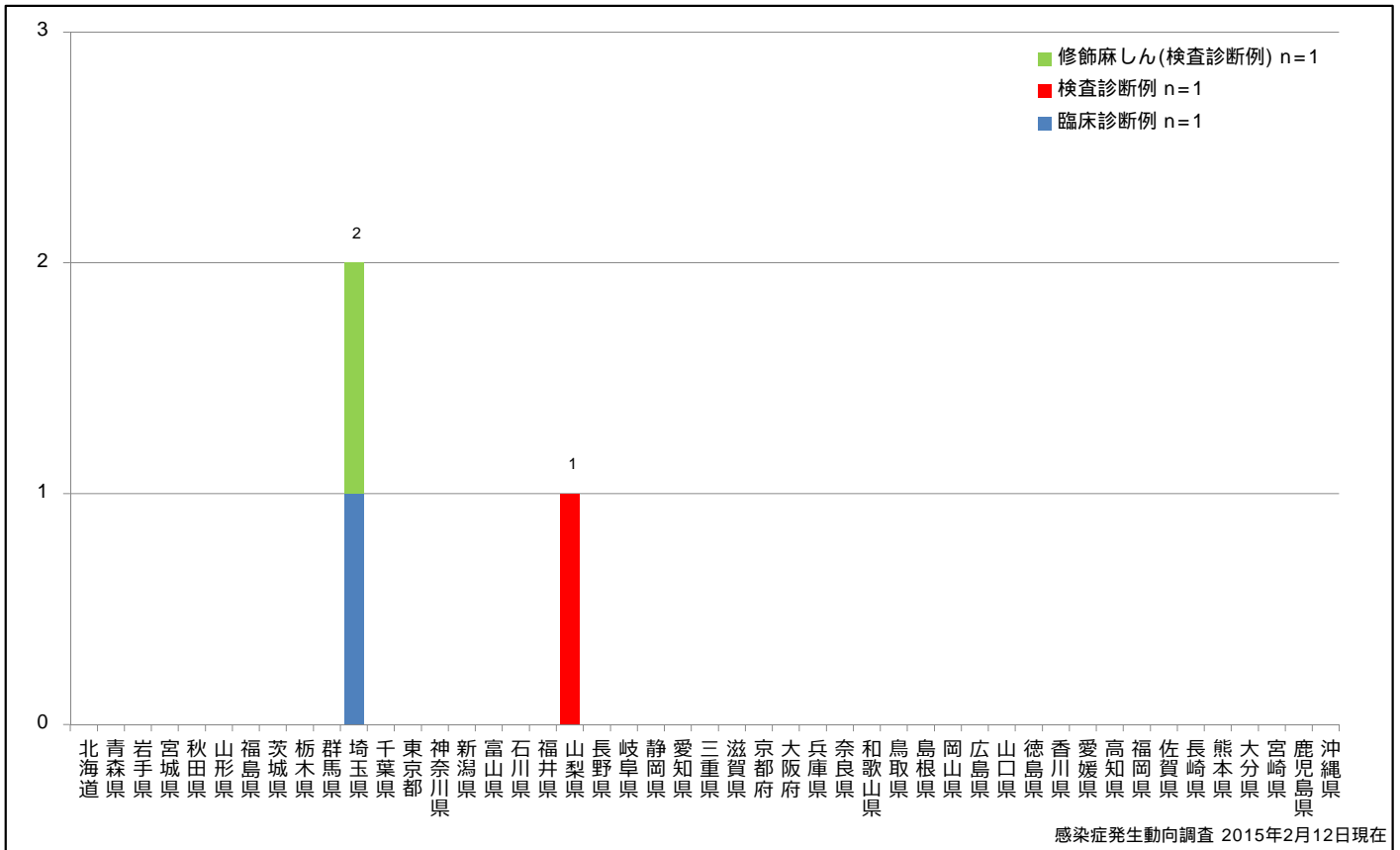
Weekly measles cases, week 1-6, 2015 (based on diagnosed week as of February 12, 2015)



3. 都道府県別病型別麻疹報告数 2015年 第6週 (n=3)

Reported measles cases by prefecture and methods of diagnosis in week 6, 2015 (as of February 12, 2015)

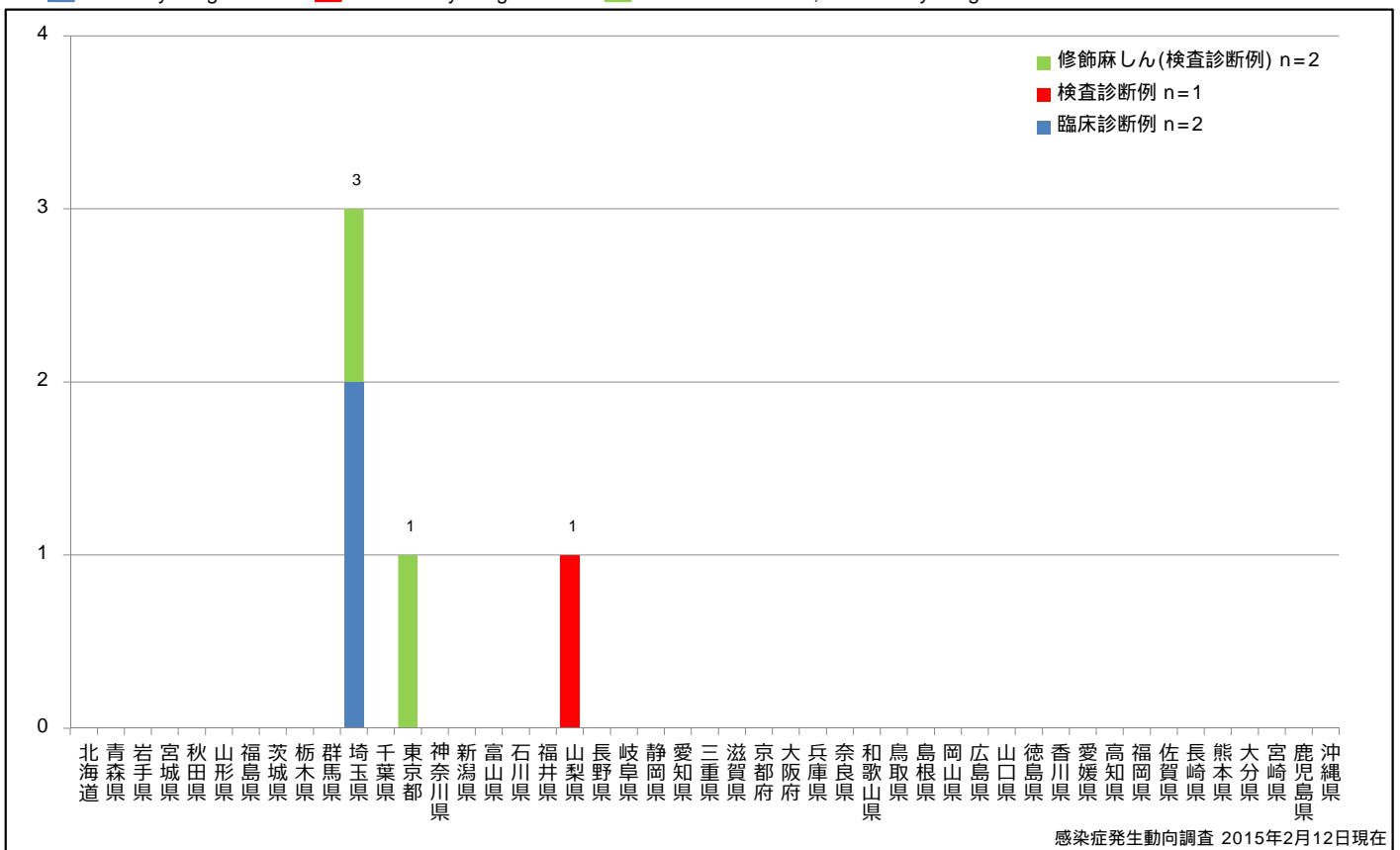
■ Clinically diagnosed   
 ■ Laboratory diagnosed   
 ■ Modified measles, laboratory diagnosed



4. 都道府県別病型別麻疹累積報告数 2015年 第1~6週 (n=5)

Cumulative measles cases by prefecture and methods of diagnosis, week 1-6, 2015 (as of February 12, 2015)

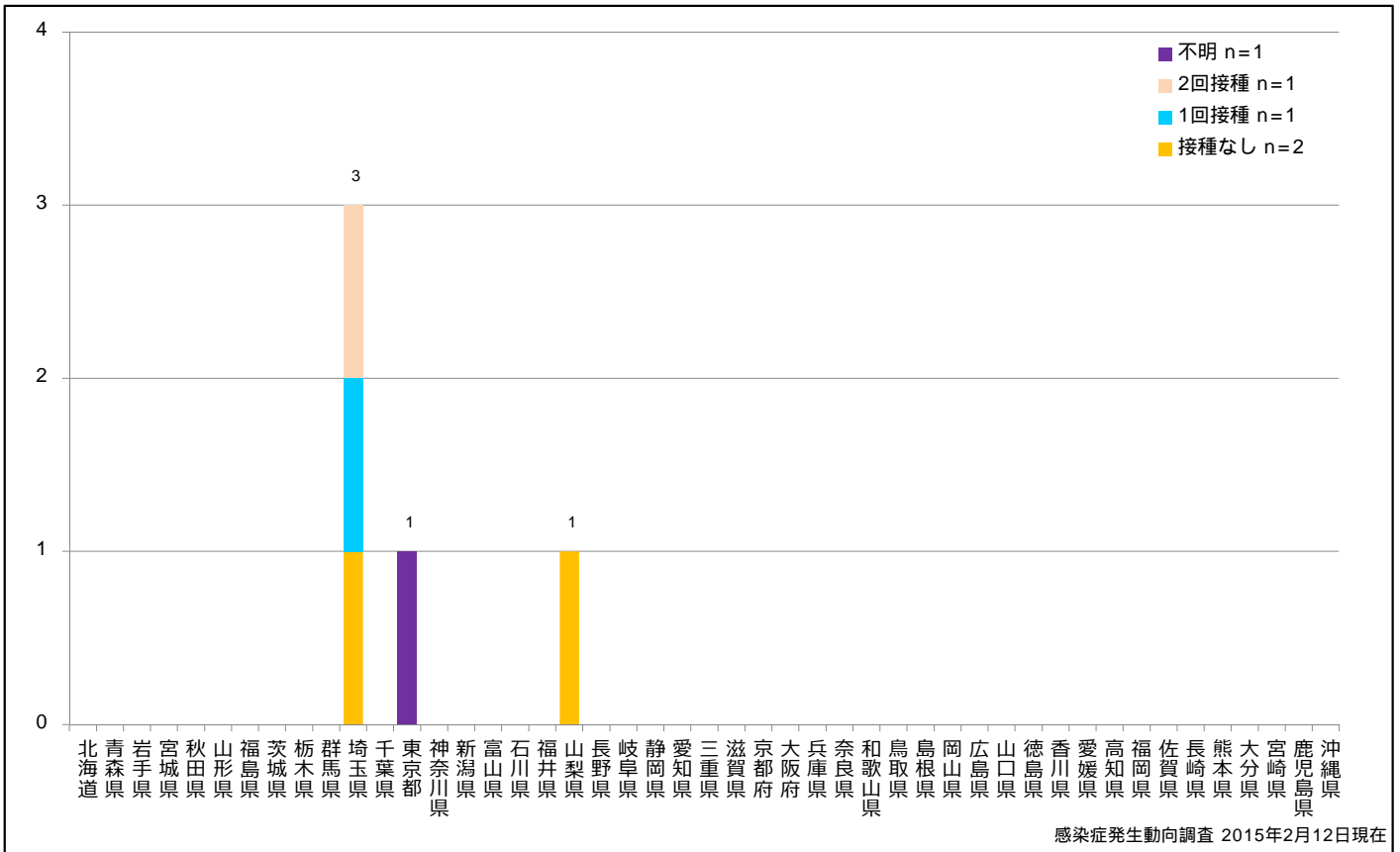
■ Clinically diagnosed   
 ■ Laboratory diagnosed   
 ■ Modified measles, laboratory diagnosed



5. 都道府県別接種歴別麻疹累積報告数 2015年 第1~6週 (n=5)

Cumulative measles cases by prefecture and vaccinated status, week 1-6, 2015 (as of February 12, 2015)

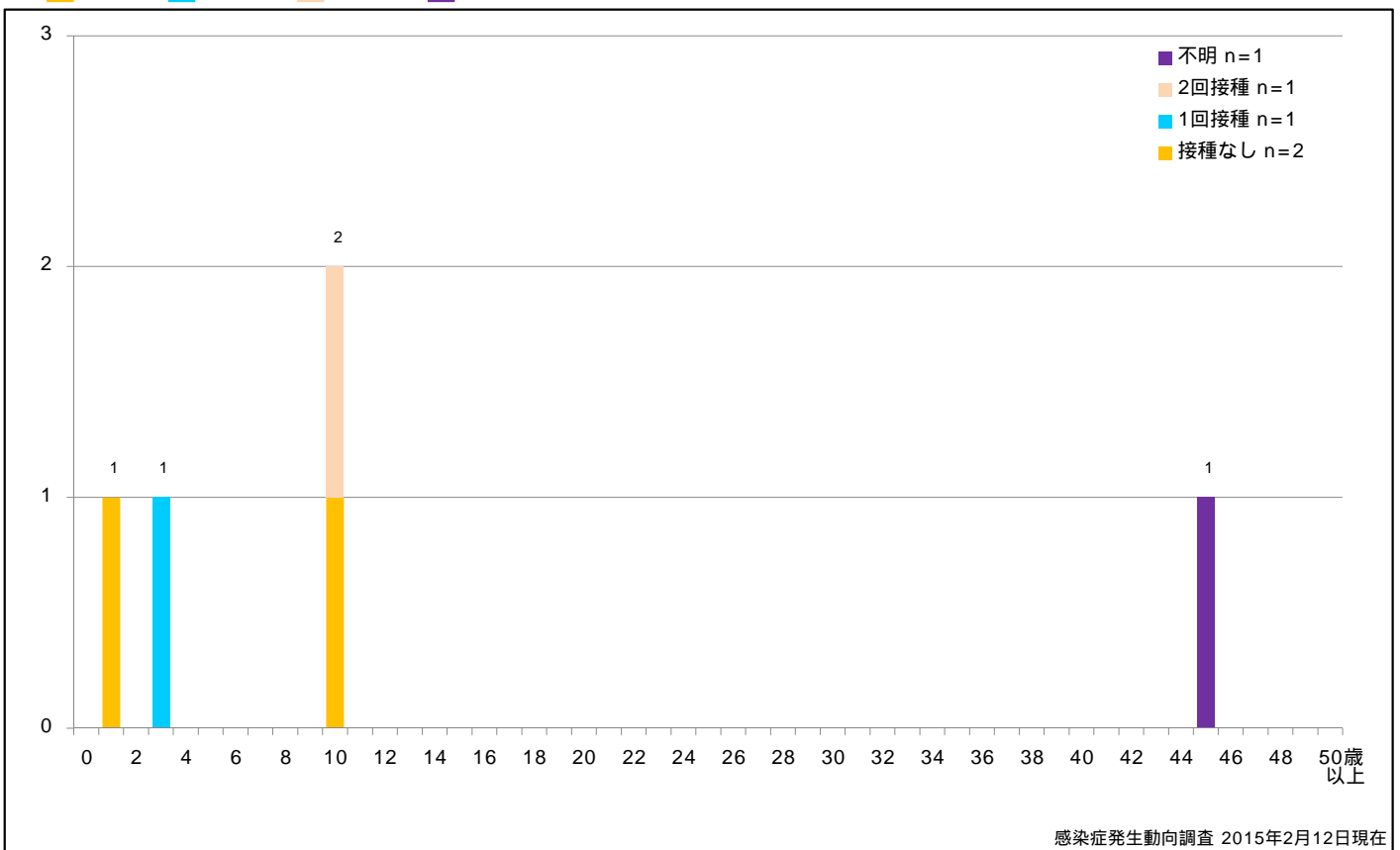
None MCV1 MCV2 Unknown



6. 年齢群別接種歴別麻疹累積報告数 2015年 第1~6週 (n=5)

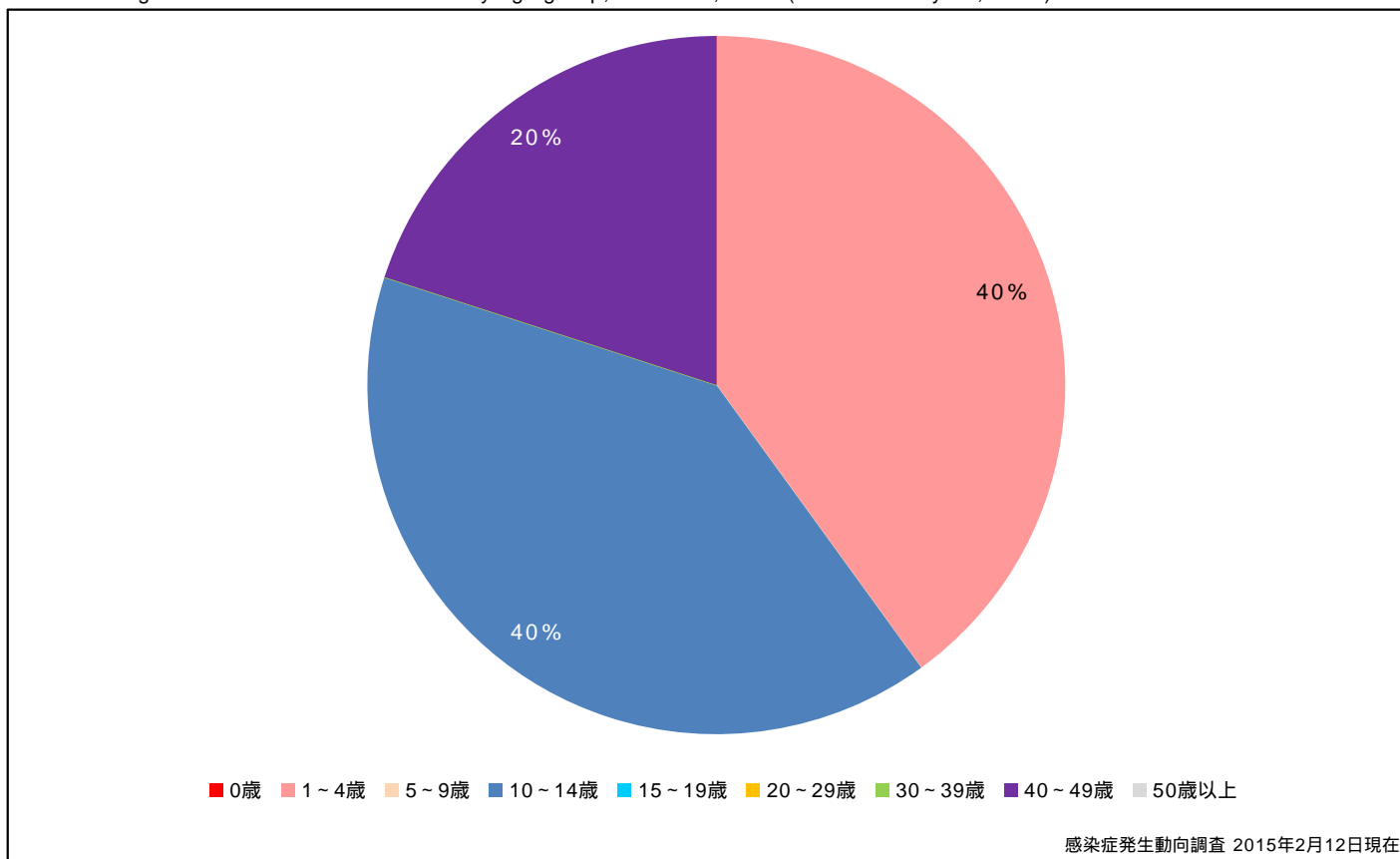
Cumulative measles cases by age and vaccinated status, week 1-6, 2015 (as of February 12, 2015)

None MCV1 MCV2 Unknown



7. 年齢群別麻疹累積報告数割合 2015年 第1～6週 (n=5)

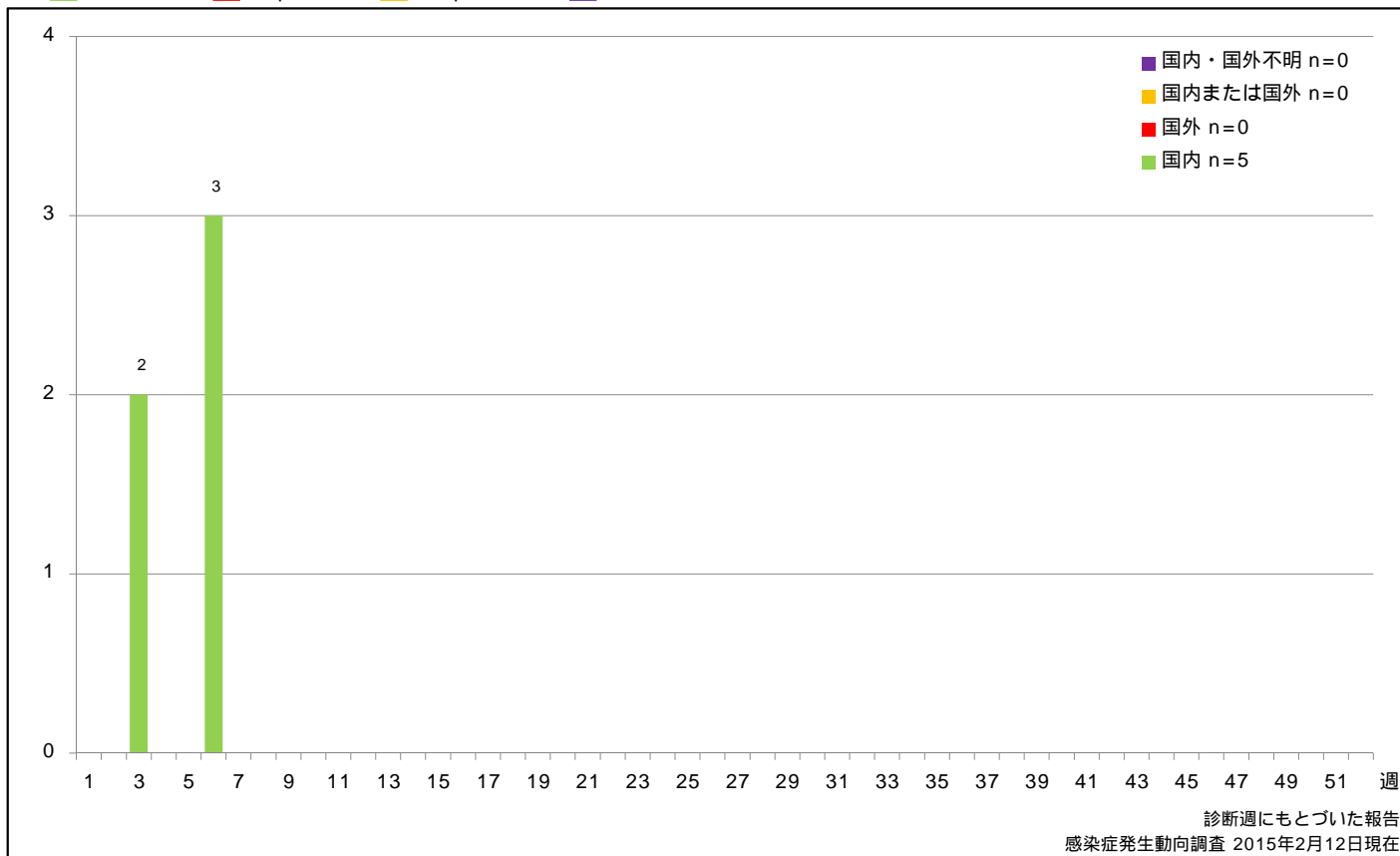
Percentage of cumulative measles cases by age group, week 1-6, 2015 (as of February 12, 2015)



8. 週別推定感染地域(国内・外)別麻疹報告数 2015年 第1～6週 (n=5)

Weekly measles cases by acquired region, week 1-6, 2015 (based on diagnosed week as of February 12, 2015)

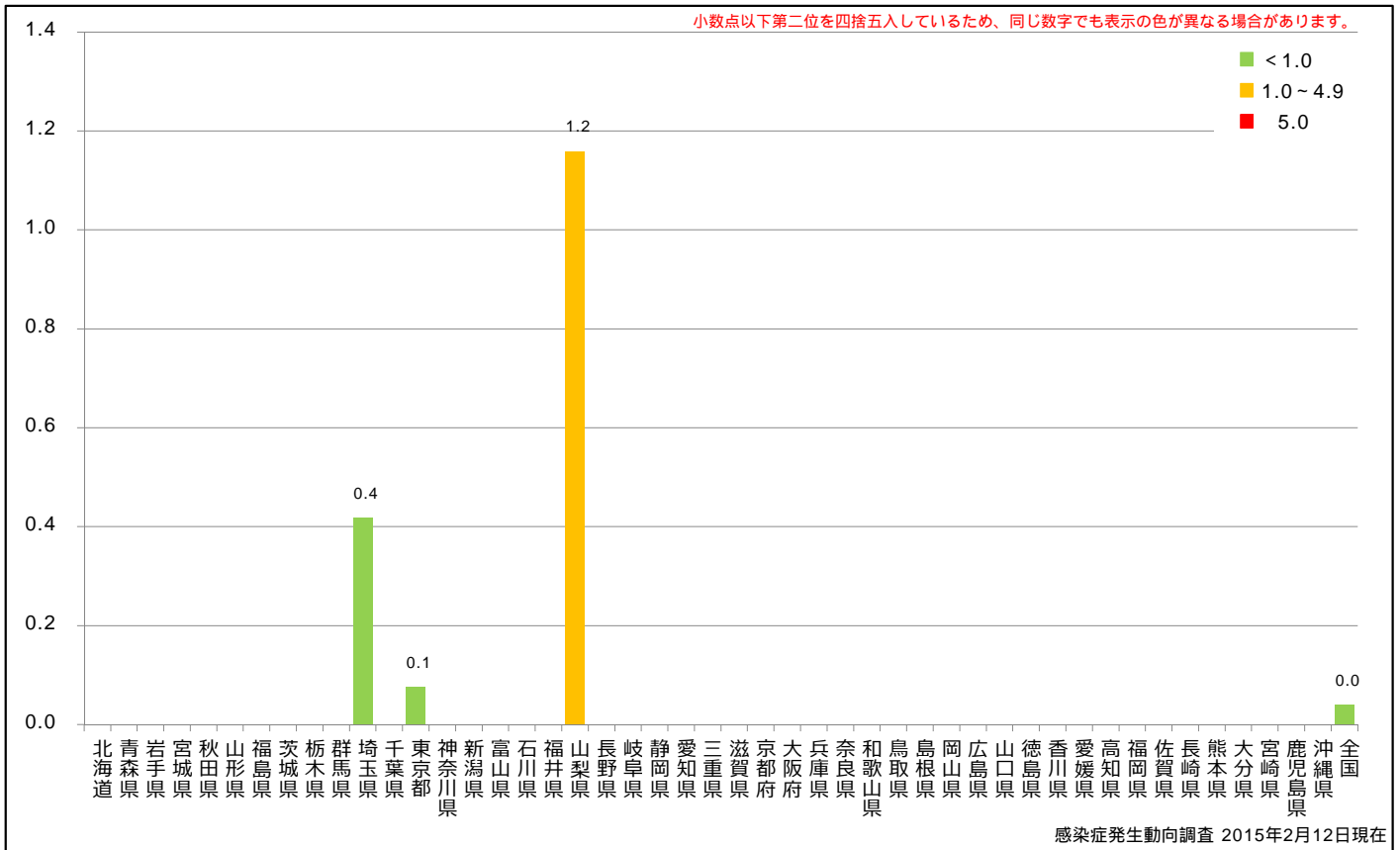
Domestic Imported Unspecified Unknown



9. 都道府県別人口百万人あたり麻疹報告数 2015年 第1～6週 (n=5)

Reported measles cases per 1 million population by prefecture, week 1-6, 2015 (as of February 12, 2015)

■ < 1.0 ■ 1.0～4.9 ■ 5.0



10. 都道府県別麻疹週別報告状況 2015年 第1~06週 感染症発生動向調査

2015年02月12日現在

Weekly measles cases from week 01 to week 06, 2015 (based on diagnosed week as of February 12, 2015)

