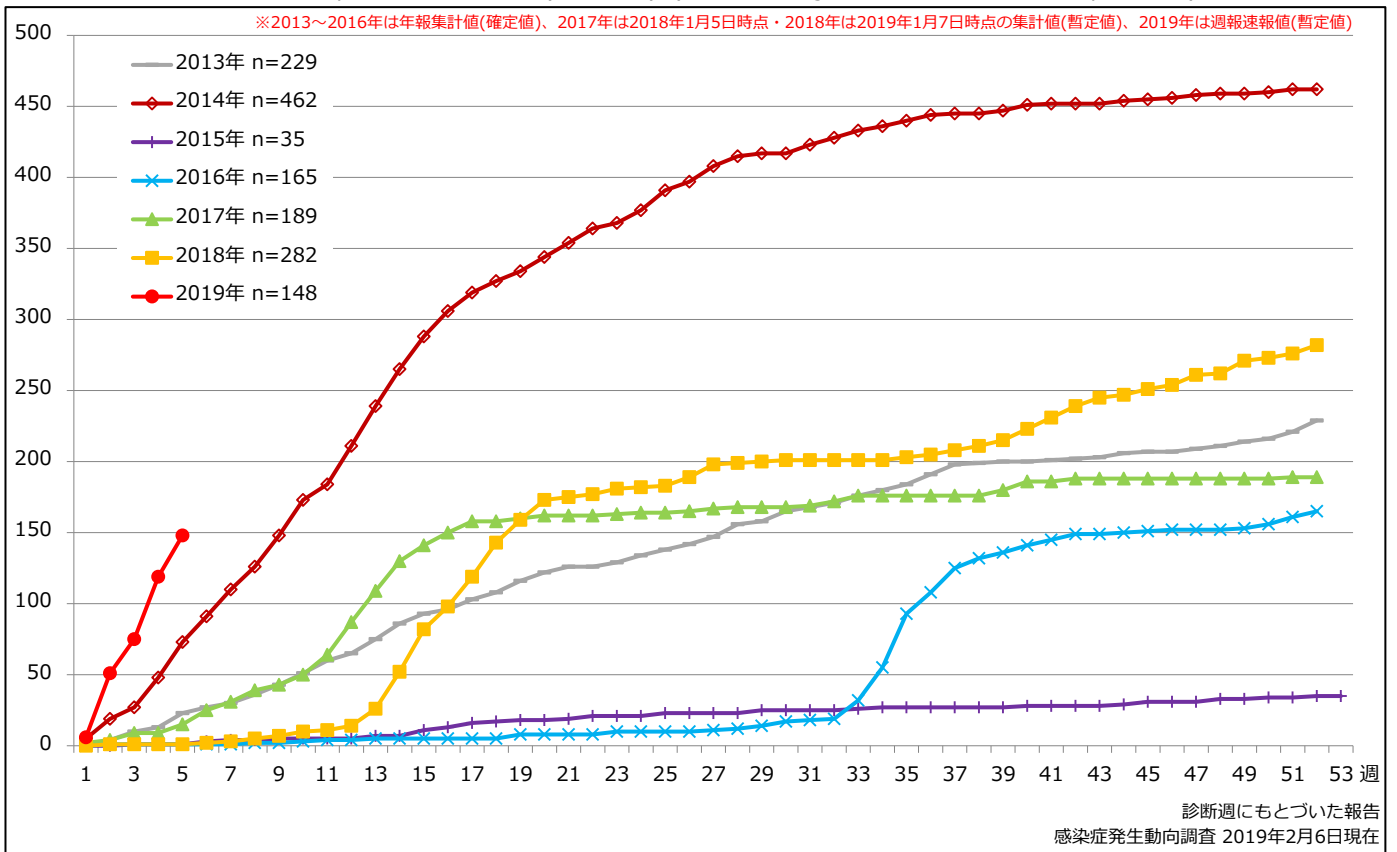


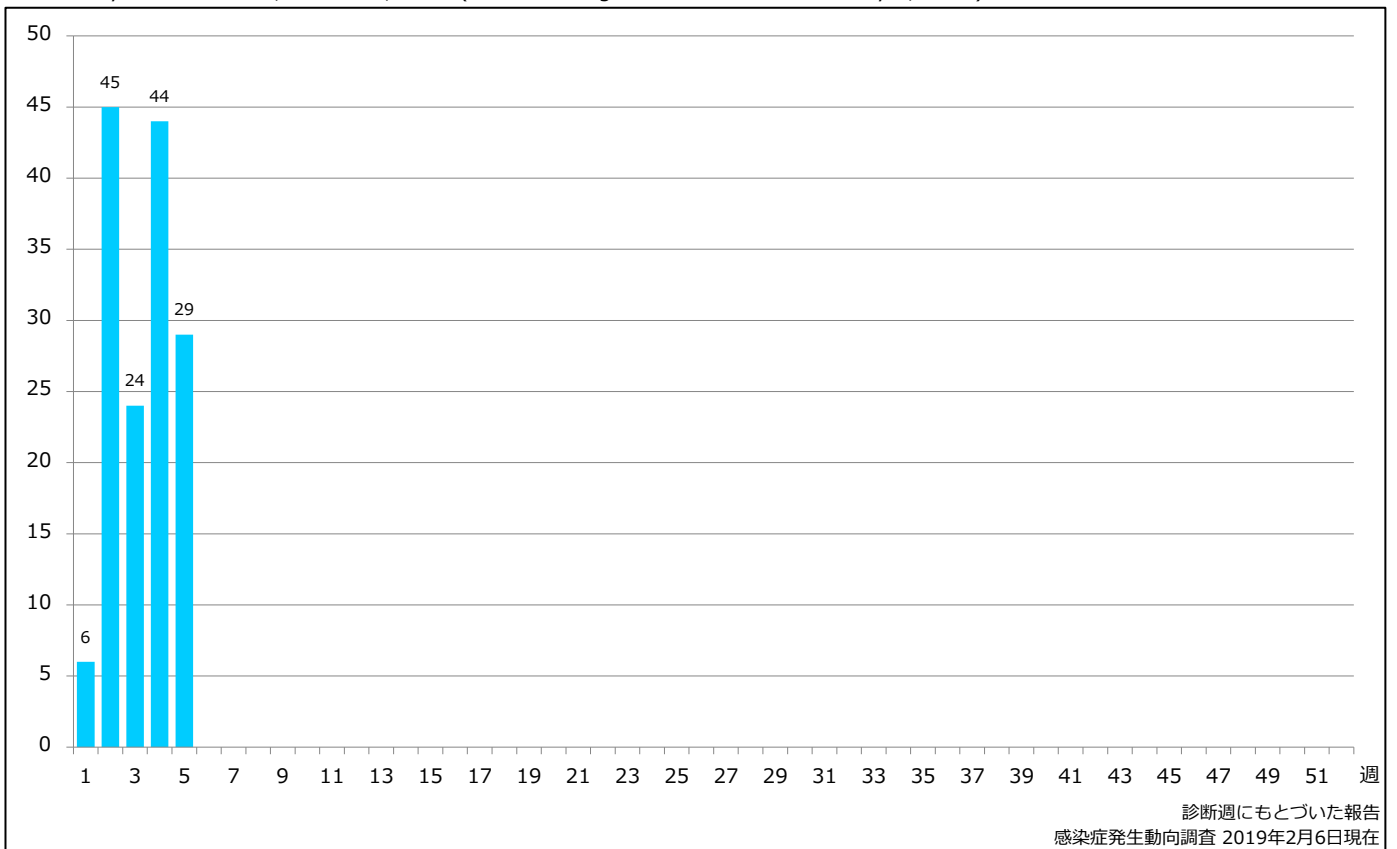
1. 麻疹累積報告数の推移 2013～2019年 (第1～5週)

Cumulative measles cases by week, 2013-2019 (week 1-5) (based on diagnosed week as of February 6, 2019)



2. 週別麻疹報告数 2019年 第1～5週 (n=148)

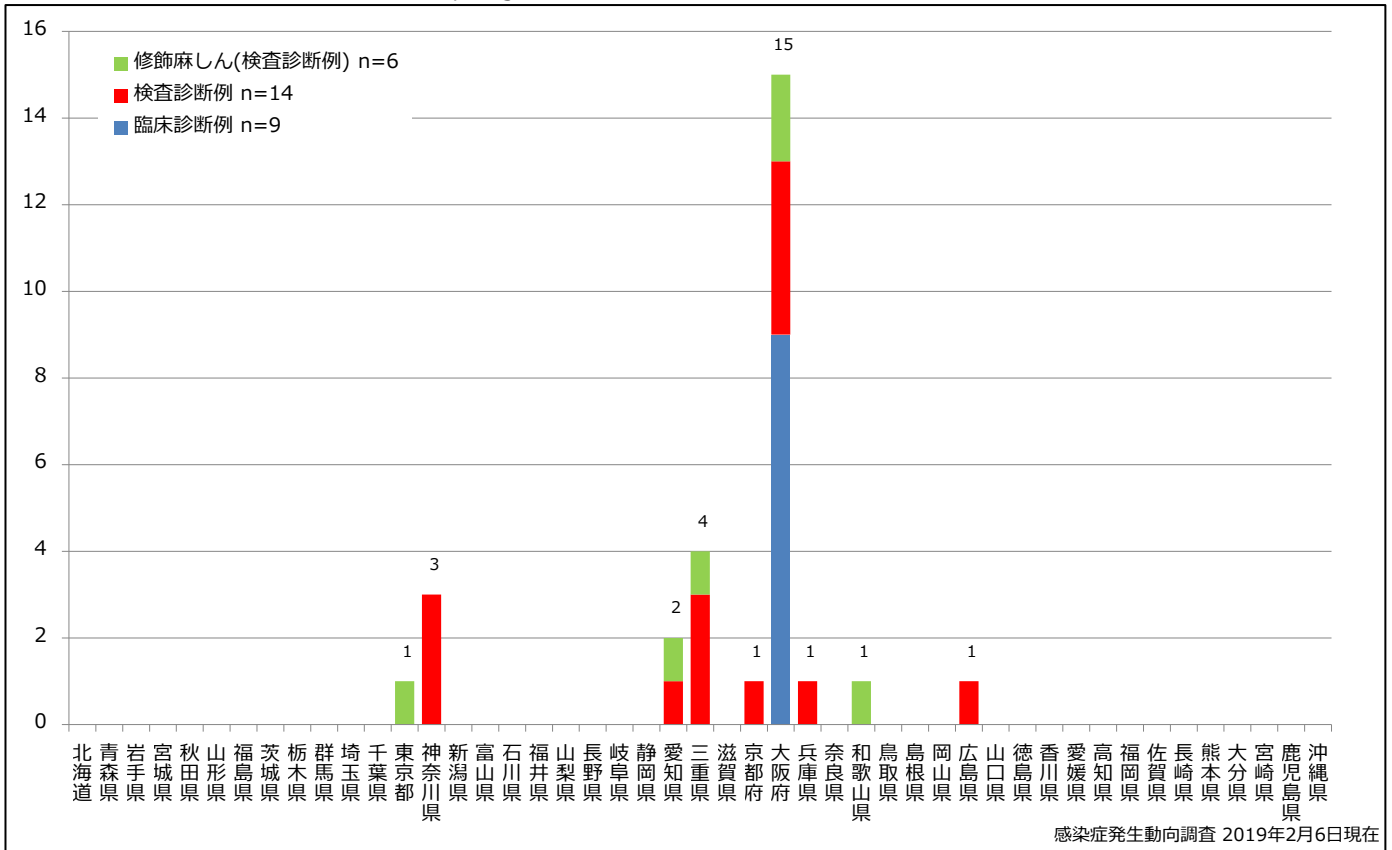
Weekly measles cases, week 1-5, 2019 (based on diagnosed week as of February 6, 2019)



3. 都道府県別病型別麻疹報告数 2019年 第5週 (n=29)

Reported measles cases by prefecture and methods of diagnosis in week 5, 2019 (as of February 6, 2019)

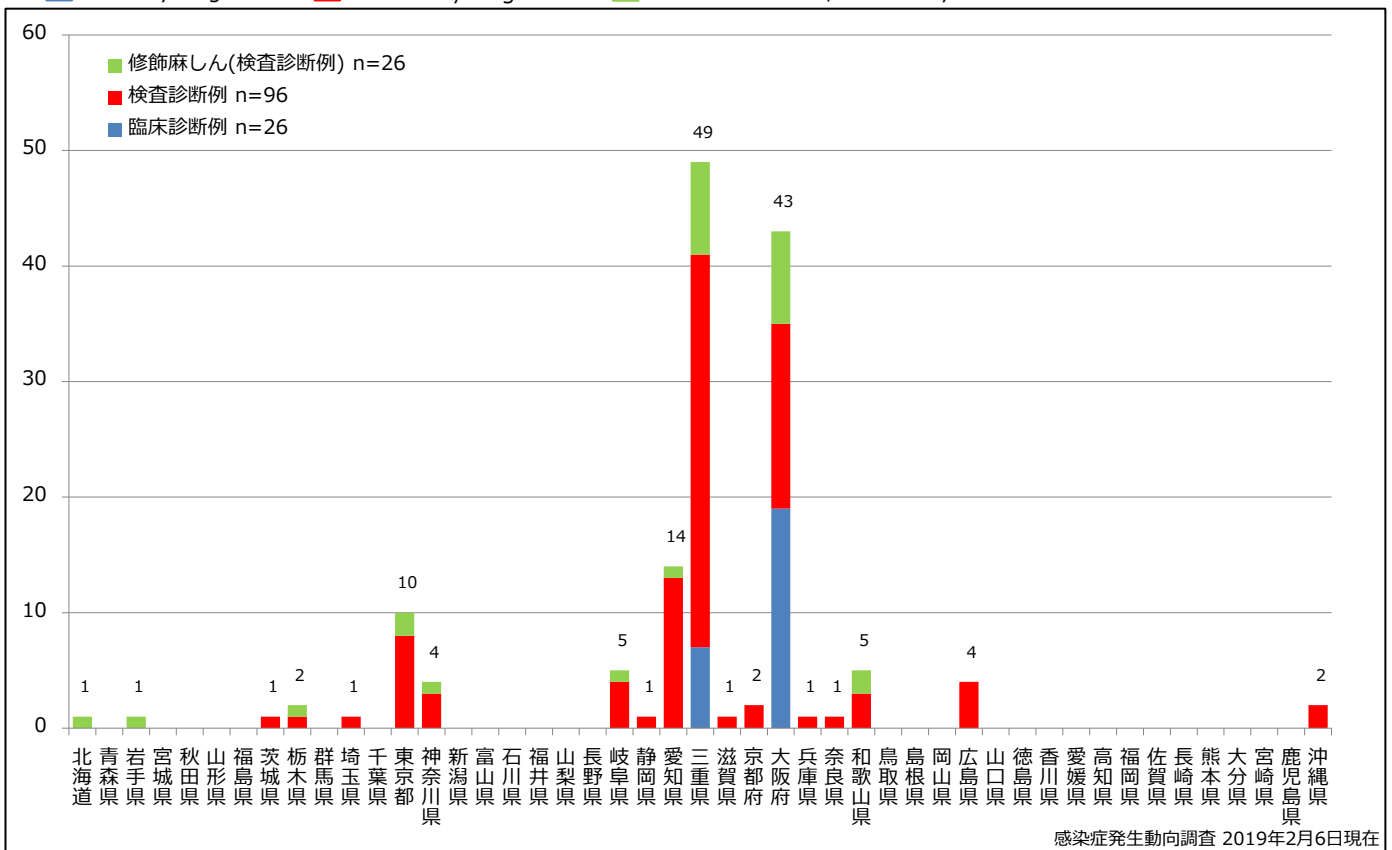
■ Clinically diagnosed
 ■ Laboratory diagnosed
 ■ Modified measles, Laboratory



4. 都道府県別病型別麻疹累積報告数 2019年 第1~5週 (n=148)

Cumulative measles cases by prefecture and methods of diagnosis, week 1-5, 2019 (as of February 6, 2019)

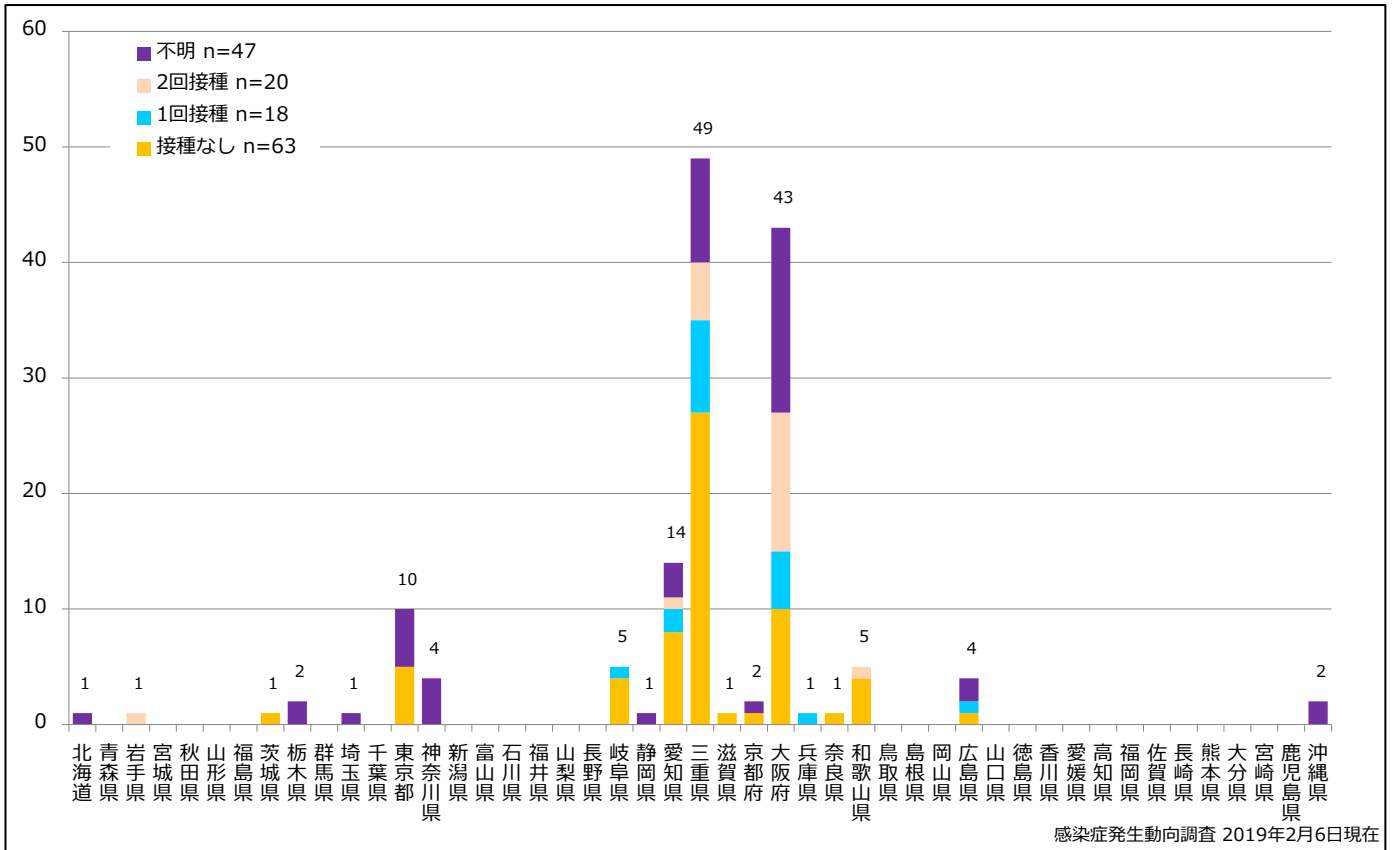
■ Clinically diagnosed
 ■ Laboratory diagnosed
 ■ Modified measles, Laboratory



5. 都道府県別接種歴別麻疹累積報告数 2019年 第1~5週 (n=148)

Cumulative measles cases by prefecture and vaccinated status, week 1-5, 2019 (as of February 6, 2019)

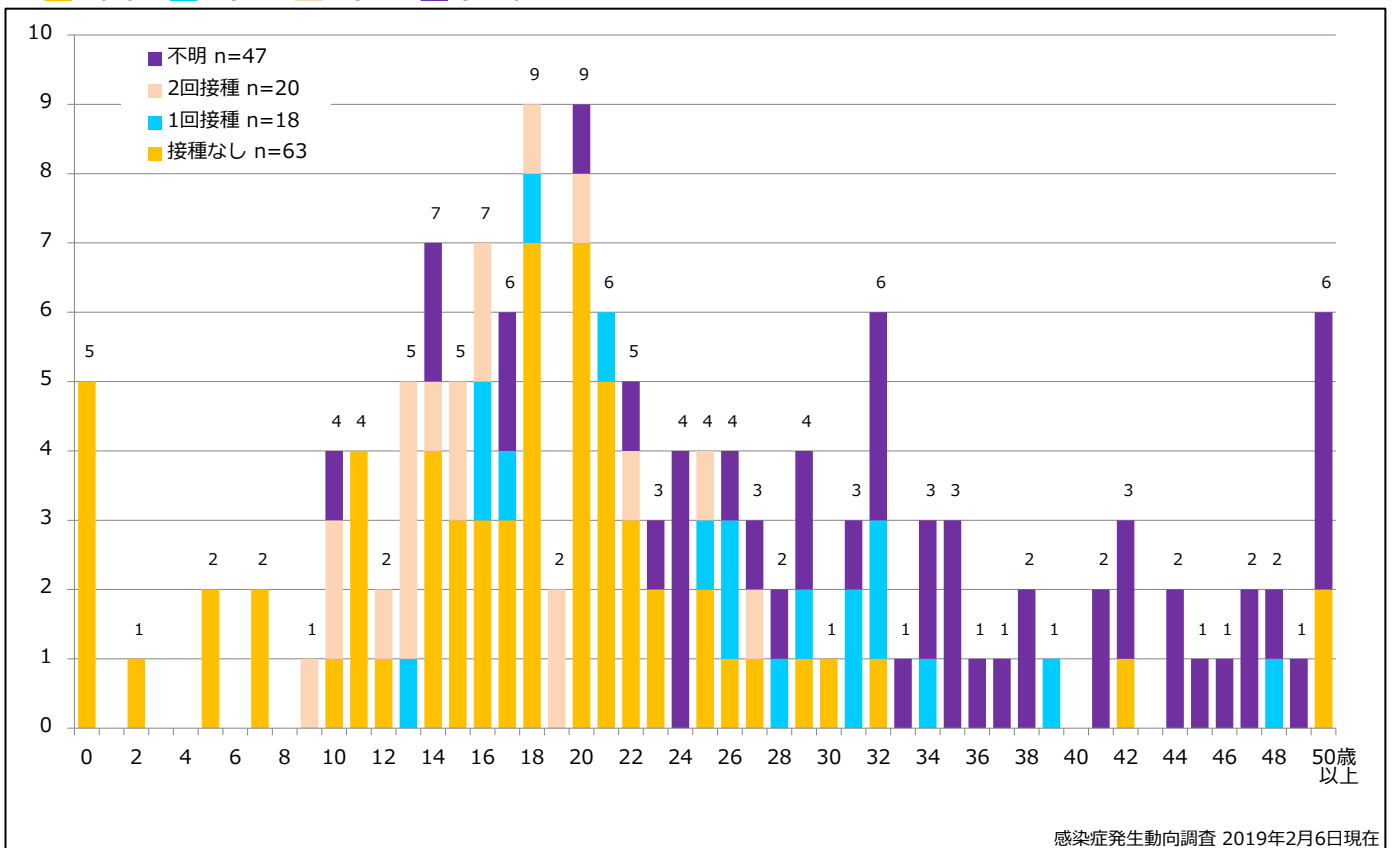
None MCV1 MCV2 Unknown



6. 年齢群別接種歴別麻疹累積報告数 2019年 第1~5週 (n=148)

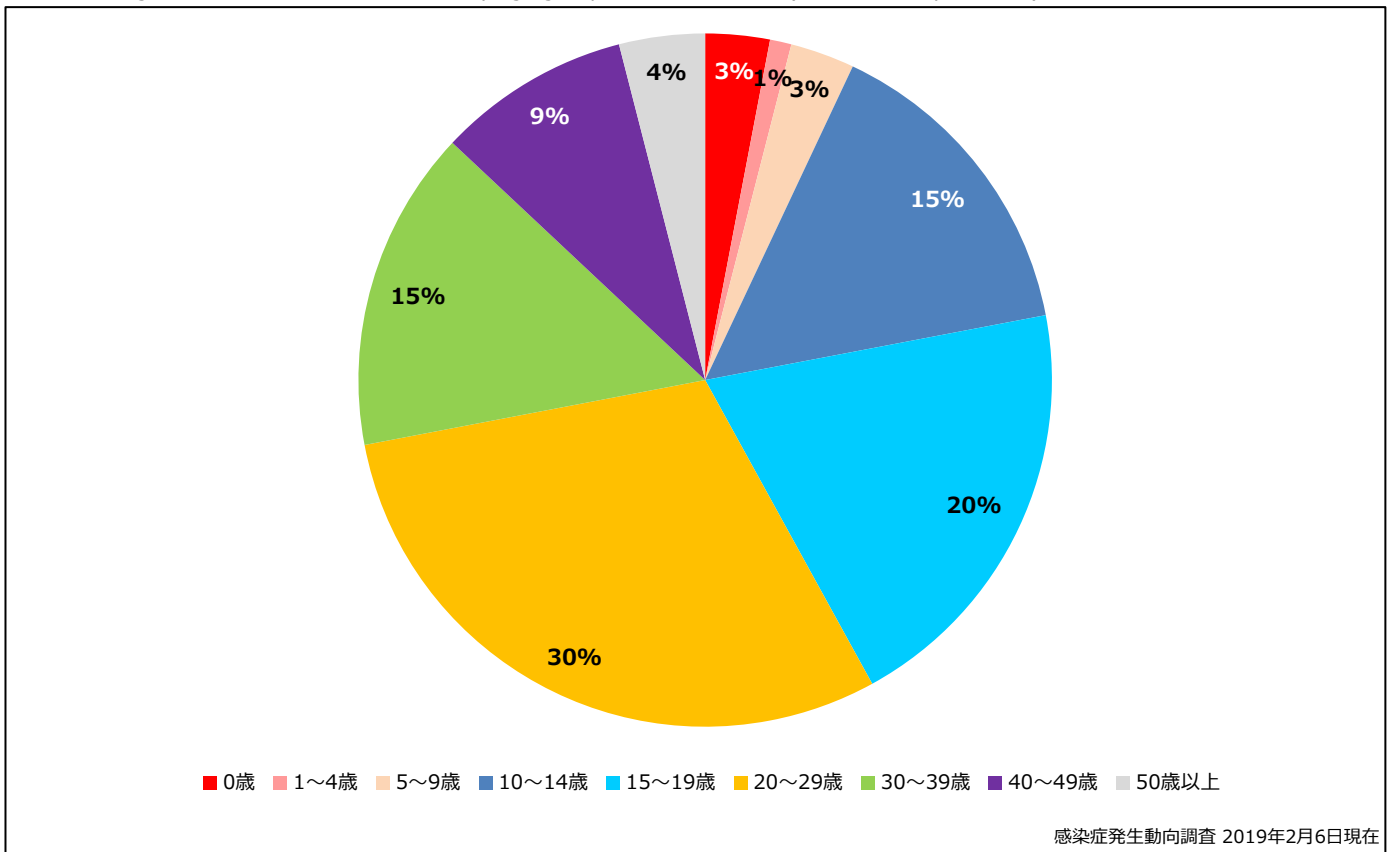
Cumulative measles cases by age and vaccinated status, week 1-5, 2019 (as of February 6, 2019)

None MCV1 MCV2 Unknown



7. 年齢群別麻疹累積報告数割合 2019年 第1~5週 (n=148)

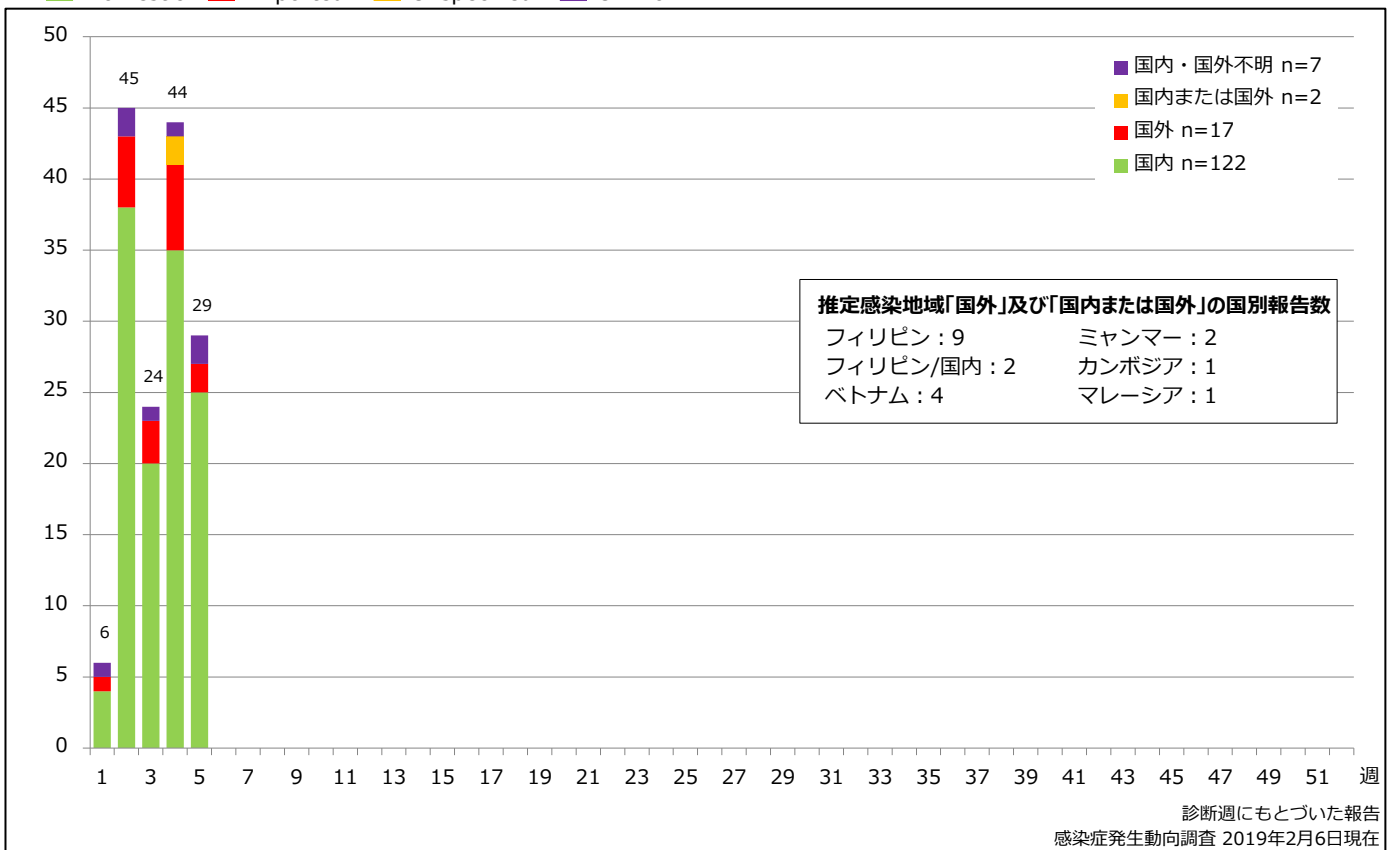
Percentage of cumulative measles cases by age group, week 1-5, 2019 (as of February 6, 2019)



8. 週別推定感染地域(国内・外)別麻疹報告数 2019年 第1~5週 (n=148)

Weekly measles cases by acquired region, week 1-5, 2019 (based on diagnosed week as of February 6, 2019)

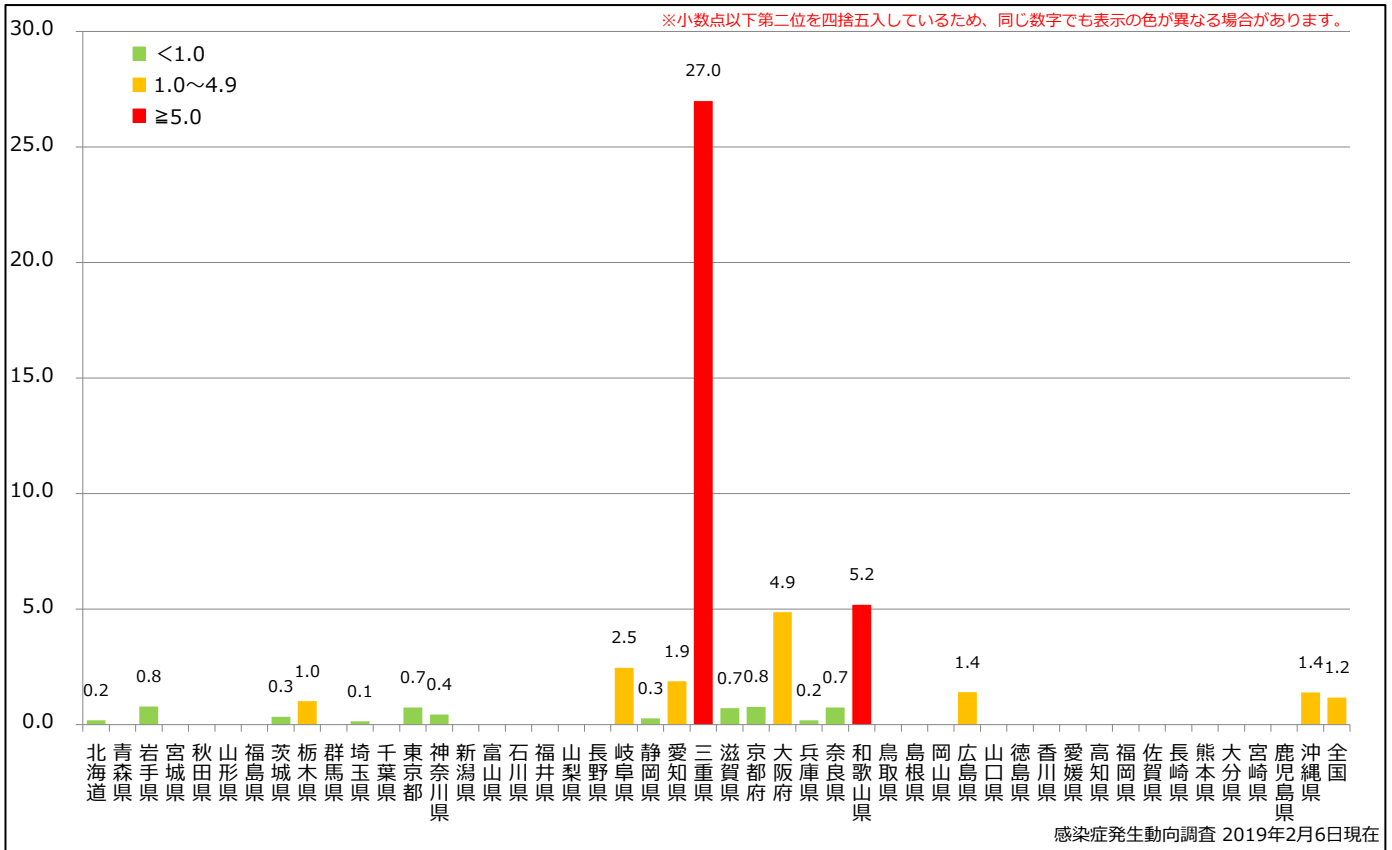
Domestic Imported Unspecified Unknown



9. 都道府県別人口百万人あたり麻疹報告数 2019年 第1~5週 (n=148)

Reported measles cases per 1 million population by prefecture, week 1-5, 2019 (as of February 6, 2019)

■ <1.0 ■ 1.0~4.9 ■ ≥5.0



Weekly measles cases from week 01 to week 05, 2019 (based on diagnosed week as of February 06, 2019)

