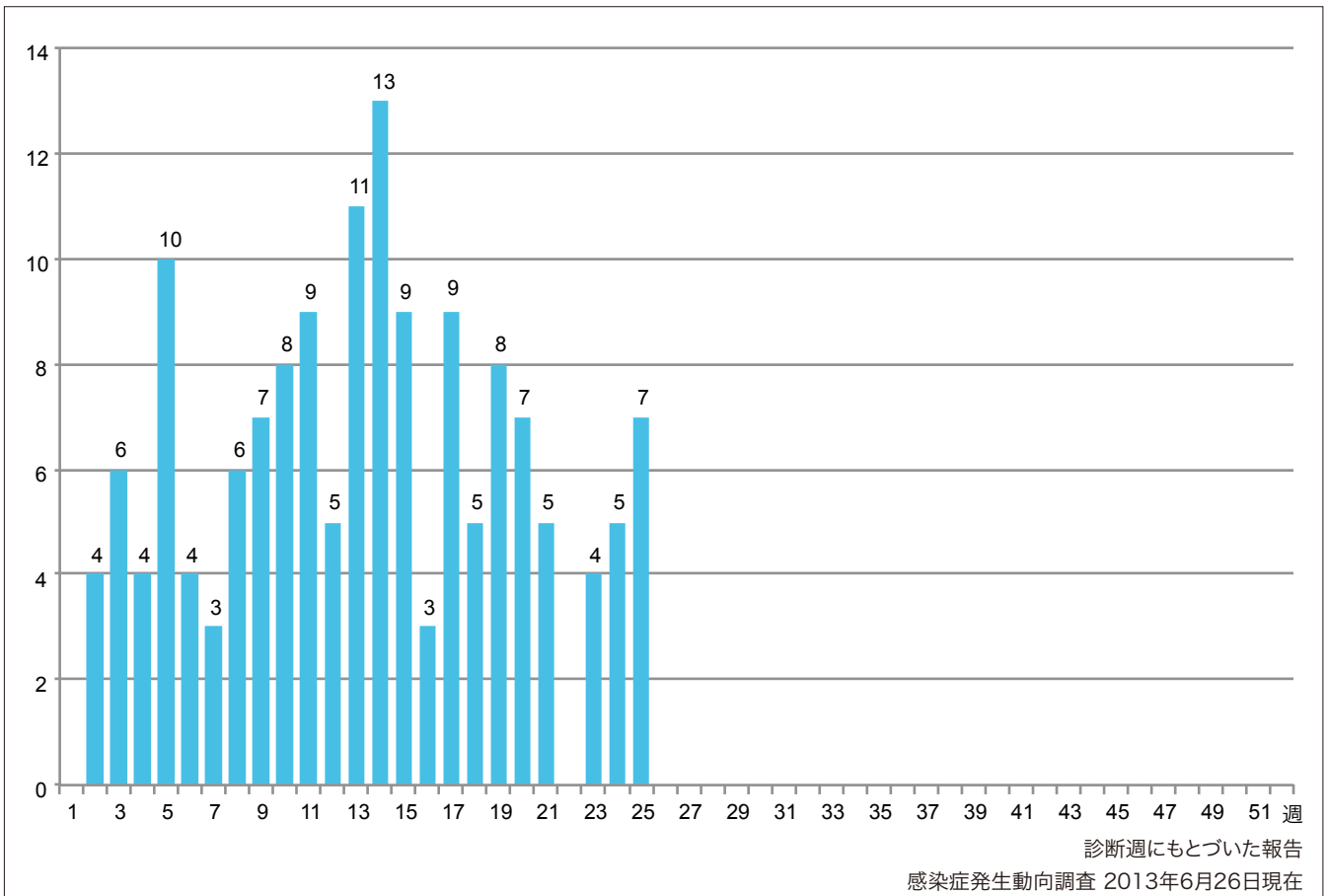


1. 週別麻疹報告数 2013年 第1~25週 (n=152)

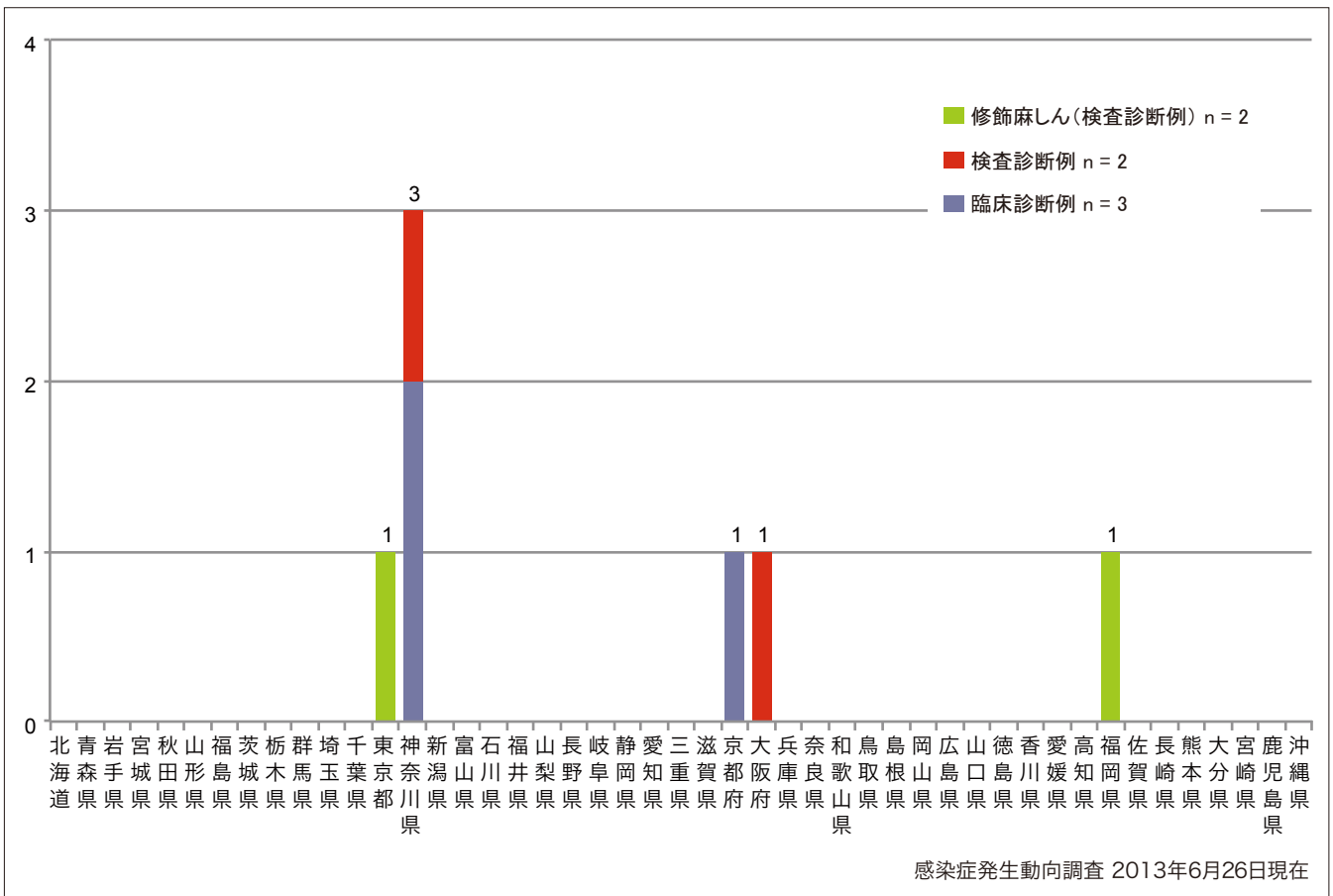
Weekly measles cases from week 1 to week 25, 2013 (based on diagnosed week as of June 26, 2013).



2. 都道府県別病型別麻疹報告数2013年 第25週 (n=7)

Reported measles cases by prefecture and methods of diagnosis in week 25, 2013 (as of June 26, 2013).

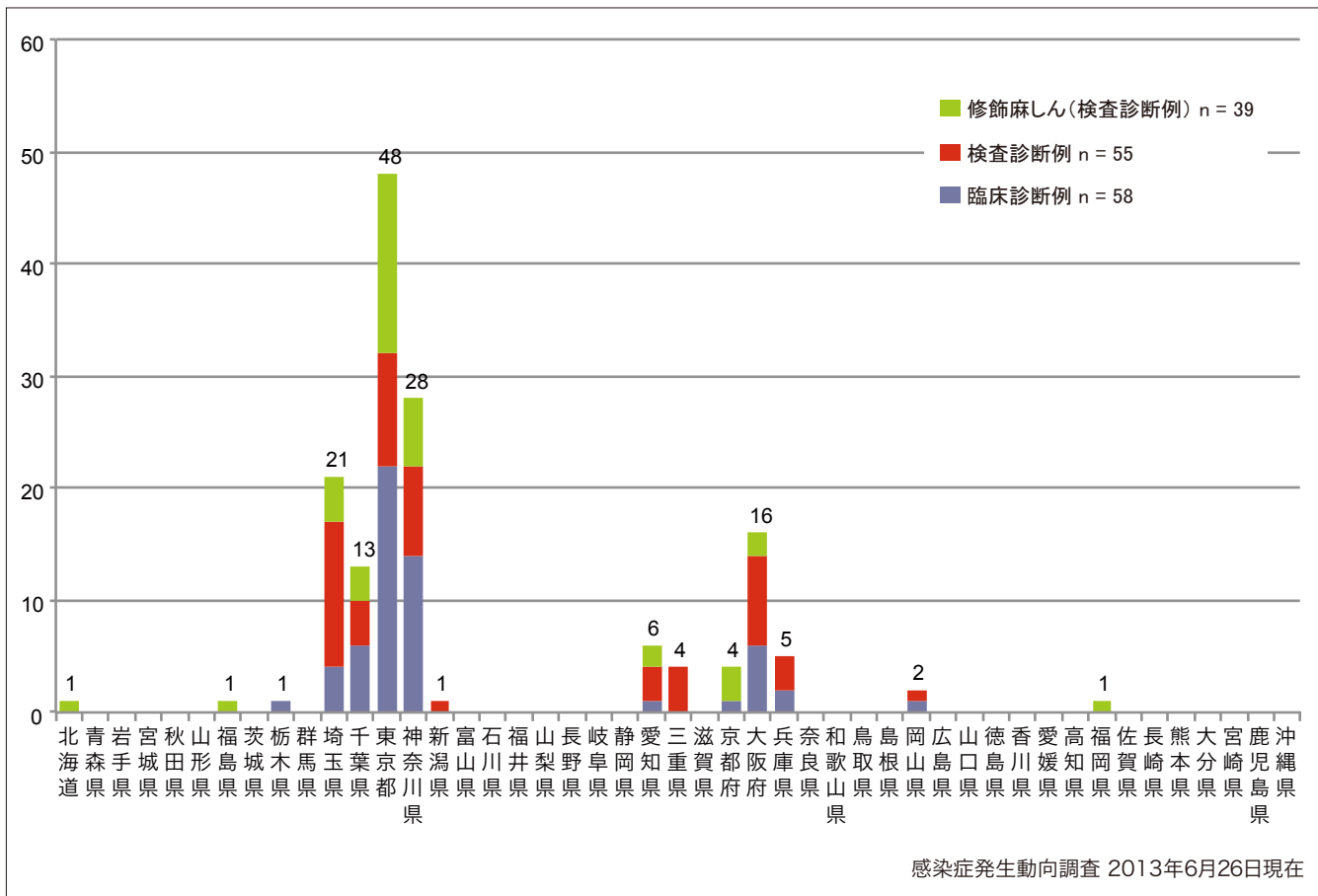
■ Clinically diagnosed ■ Laboratory diagnosed ■ Modified measles, laboratory diagnosed



3. 都道府県別病型別麻疹累積報告数 2013年 第1~25週 (n=152)

Cumulative measles cases by prefecture and methods of diagnosis from week 1 to week 25, 2013 (as of June 26, 2013).

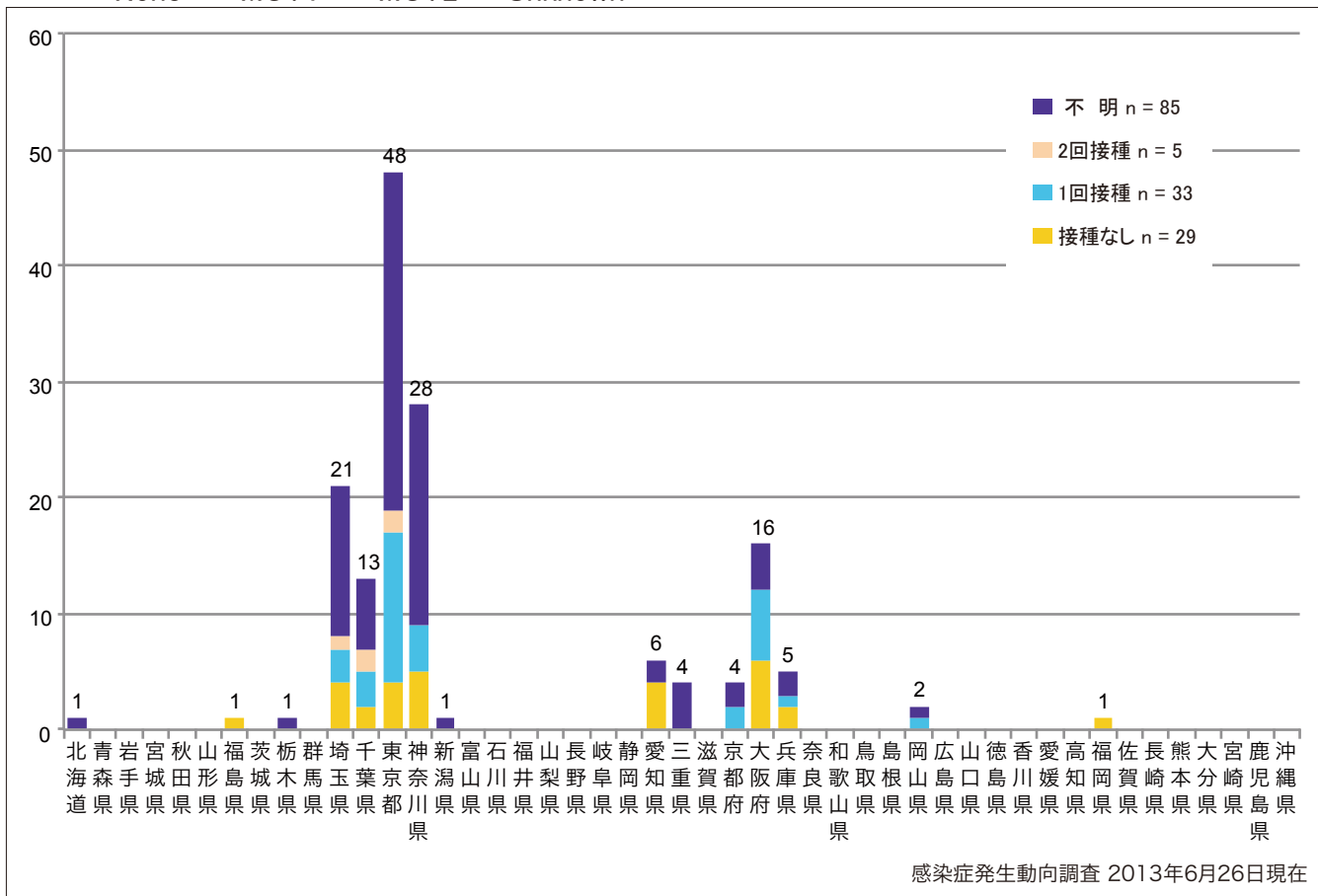
■ Clinically diagnosed ■ Laboratory diagnosed ■ Modified measles, laboratory diagnosed



4. 都道府県別接種歴別麻疹累積報告数 2013年 第1~25週 (n=152)

Cumulative measles cases by prefecture and vaccinated status from week 1 to week 25, 2013 (as of June 26, 2013).

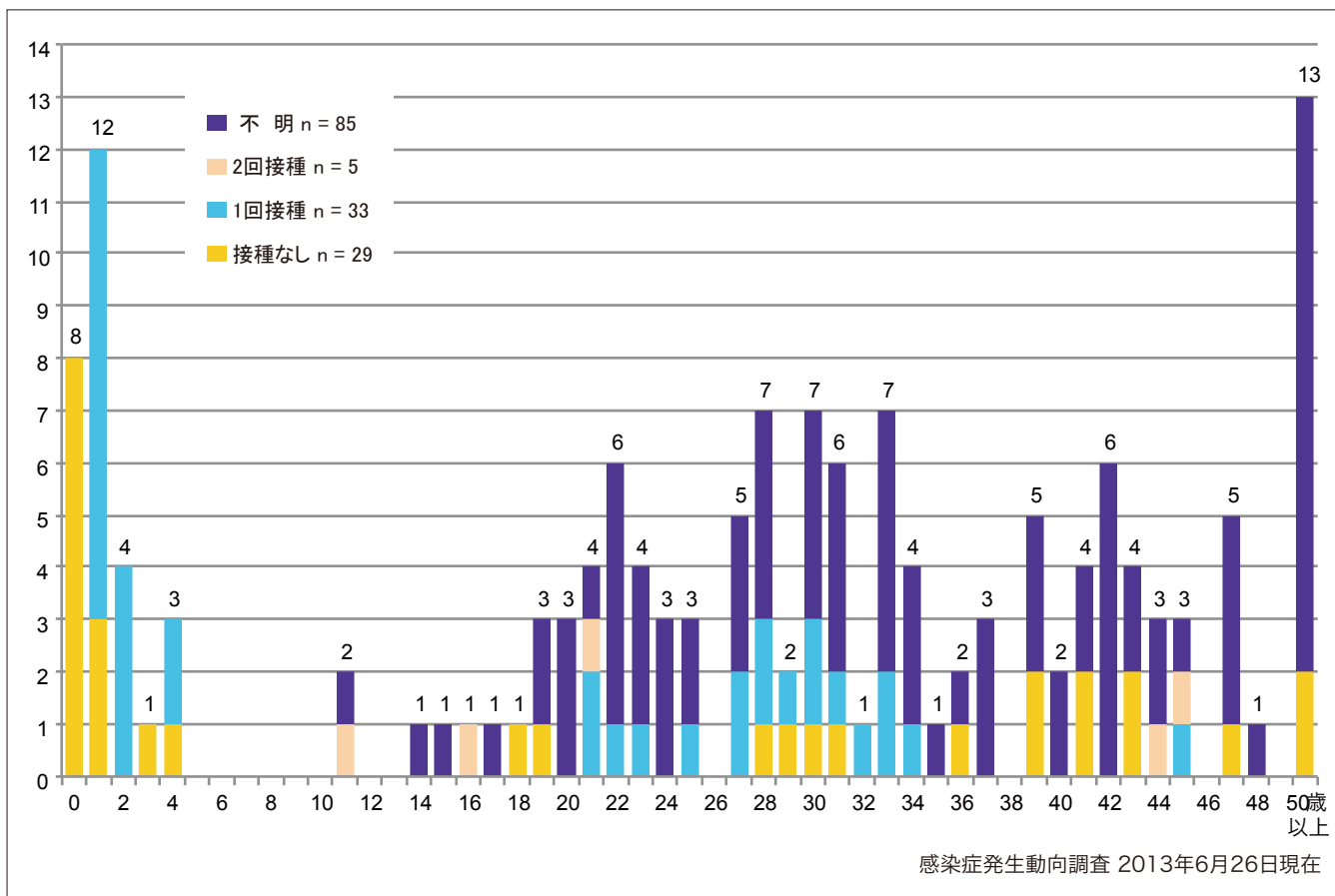
■ None ■ MCV1 ■ MCV2 ■ Unknown



5. 年齢群別接種歴別麻疹累積報告数 2013年 第1~25週 (n=152)

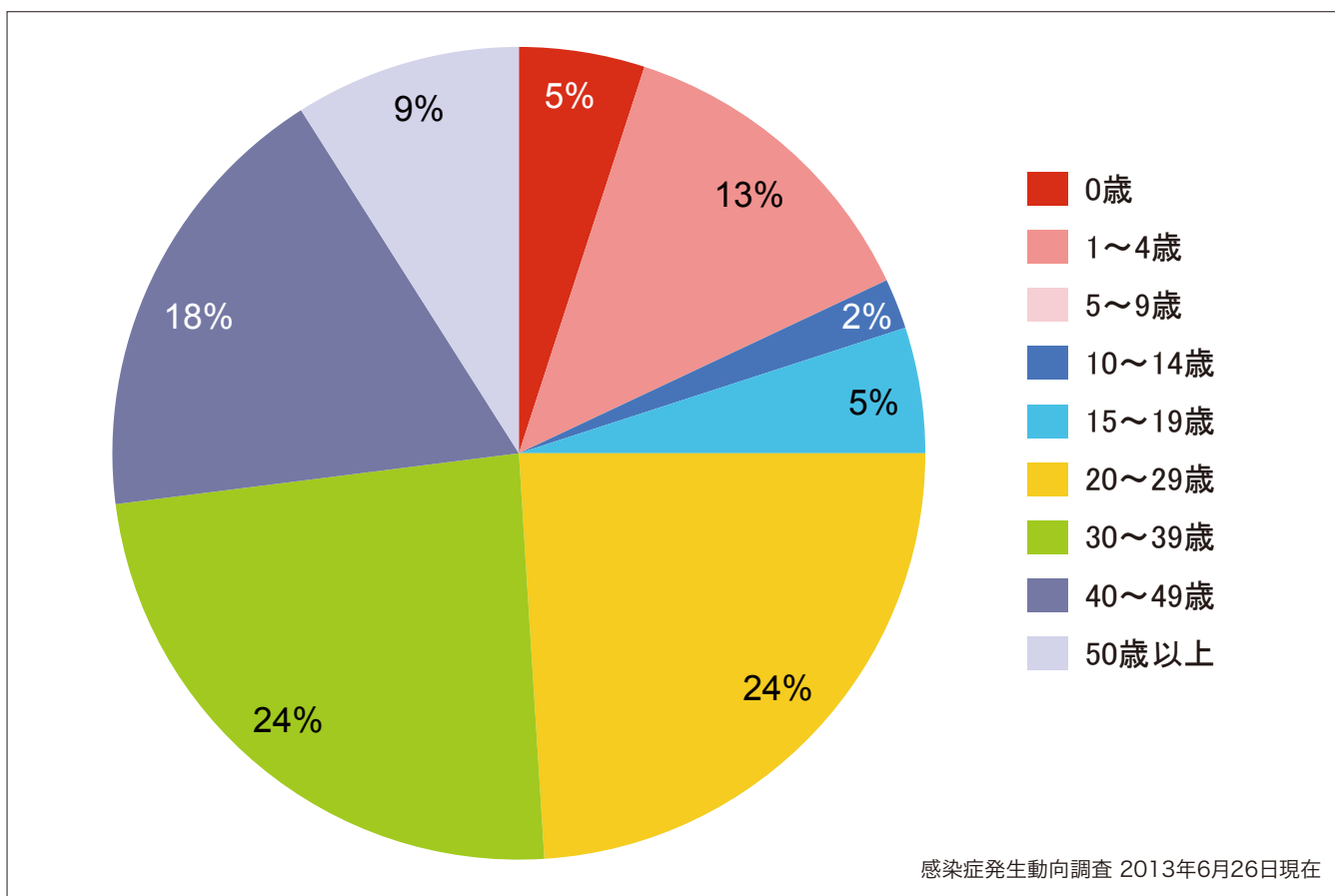
Cumulative measles cases by age and vaccinated status from week 1 to week 25, 2013 (as of June 26, 2013).

■ None ■ MCV1 ■ MCV2 ■ Unknown



6. 年齢群別麻疹累積報告数割合 2013年 第1~25週 (n=152)

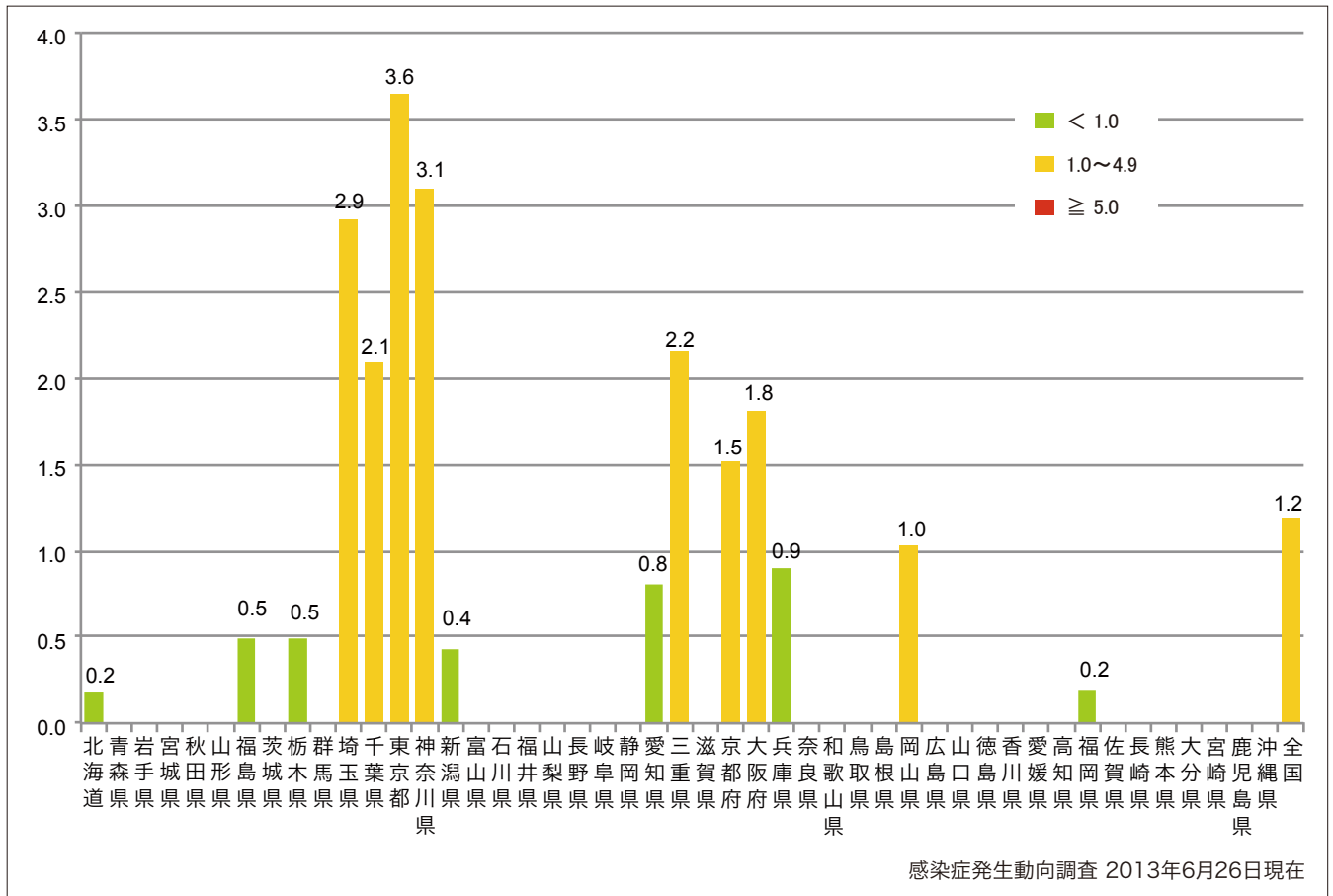
Percentage of cumulative measles cases by age group from week 1 to week 25, 2013 (as of June 26, 2013).



7. 都道府県別人口百万人あたり麻しん報告数 2013年 第1~25週 (n=152)

Number of reported cases per 1 million population by prefectures from week 1 to week 25, 2013 (as of June 26, 2013).

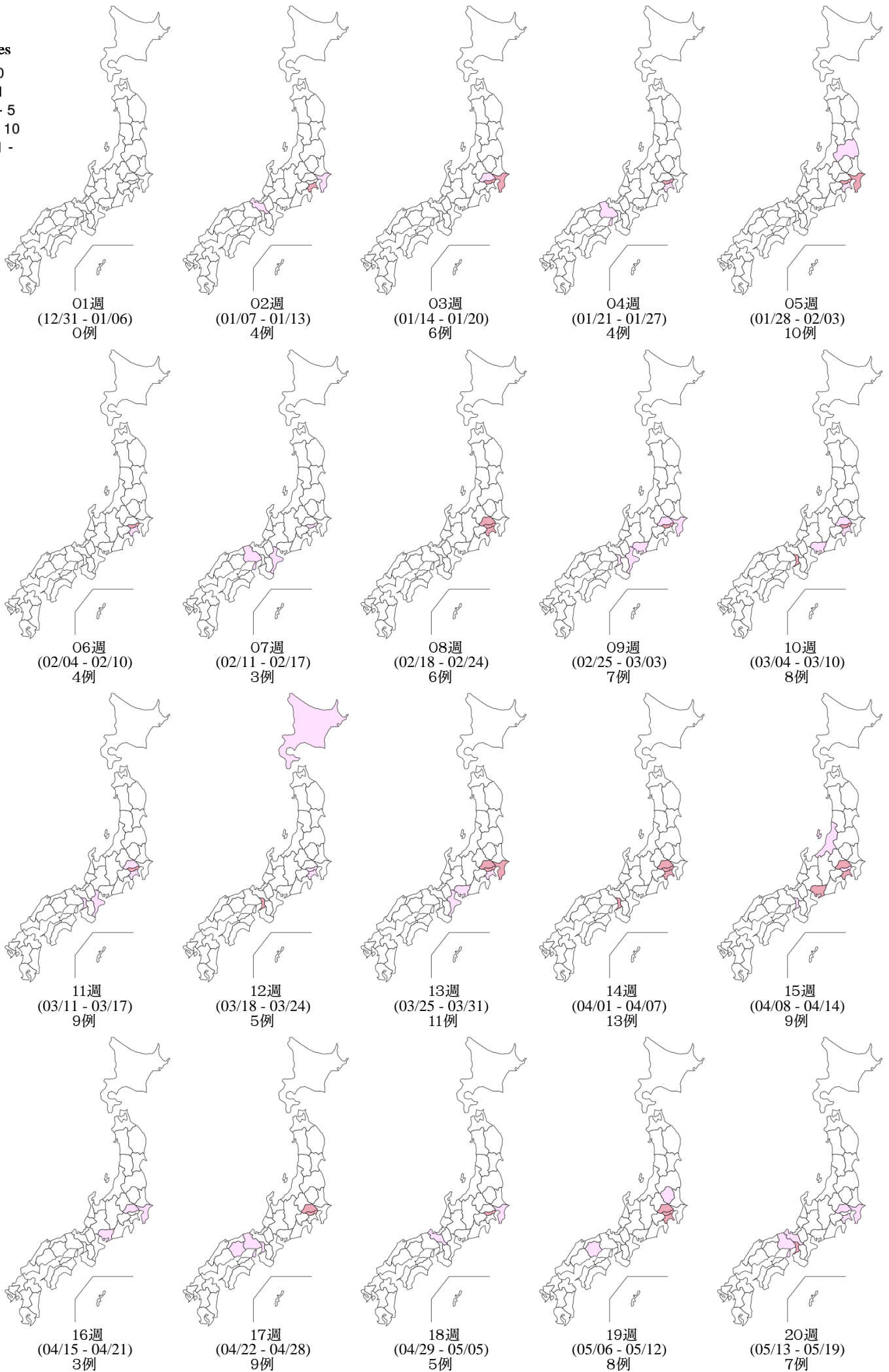
■ <1.0 ■ 1.0~4.9 ■ ≥5.0



8. 都道府県別麻疹週別報告状況 2013年 第1~25週 感染症発生動向調査

2013年06月26日現在

Weekly measles cases from week 1 to week 25, 2013 (based on diagnosed week as of June 26, 2013)



8. 都道府県別麻疹週別報告状況 2013年 第1~25週 感染症発生動向調査

2013年06月26日現在

Weekly measles cases from week 1 to week 25, 2013 (based on diagnosed week as of June 26, 2013)

