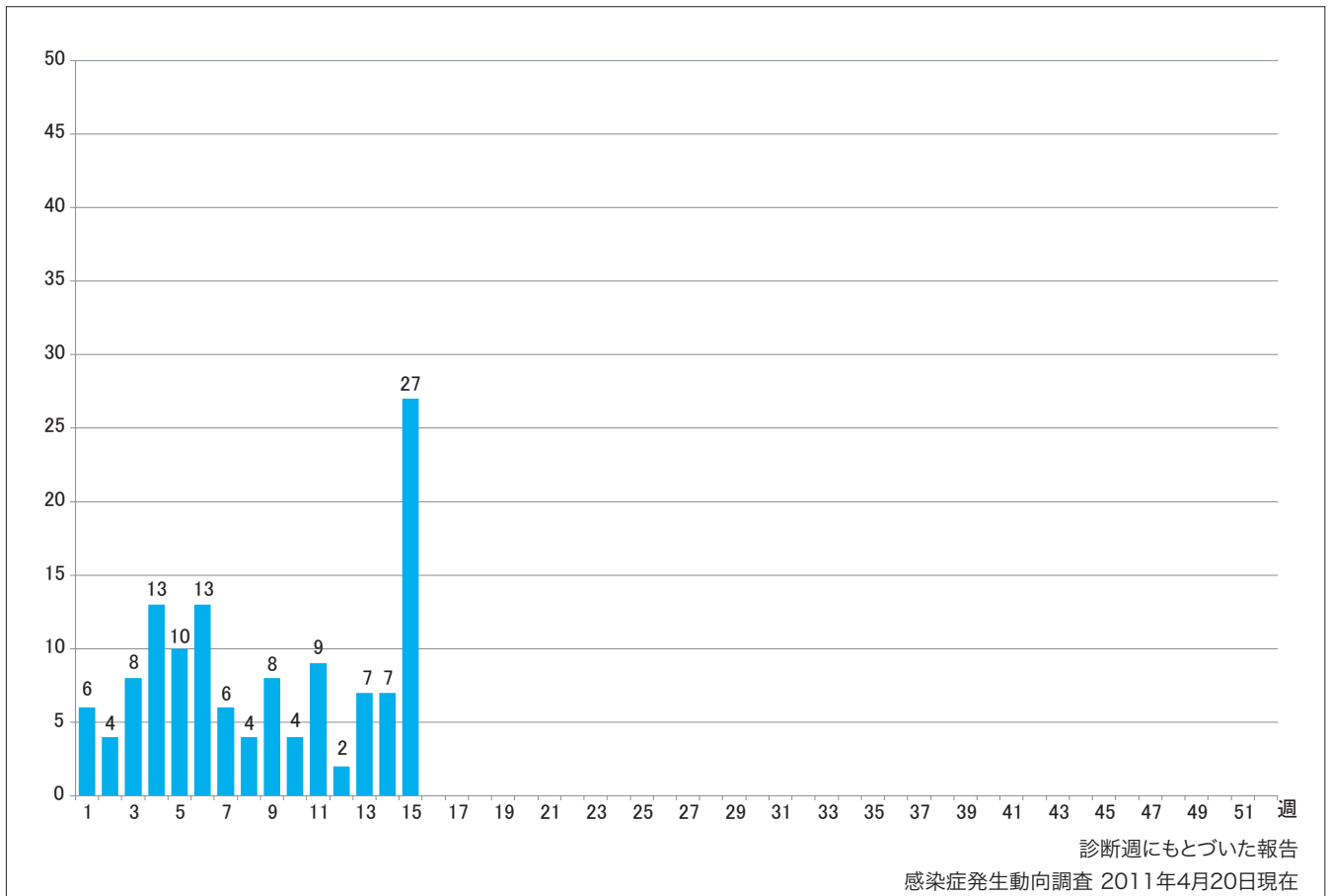


1. 週別麻疹報告数 2011年 第1~15週 (n=128)

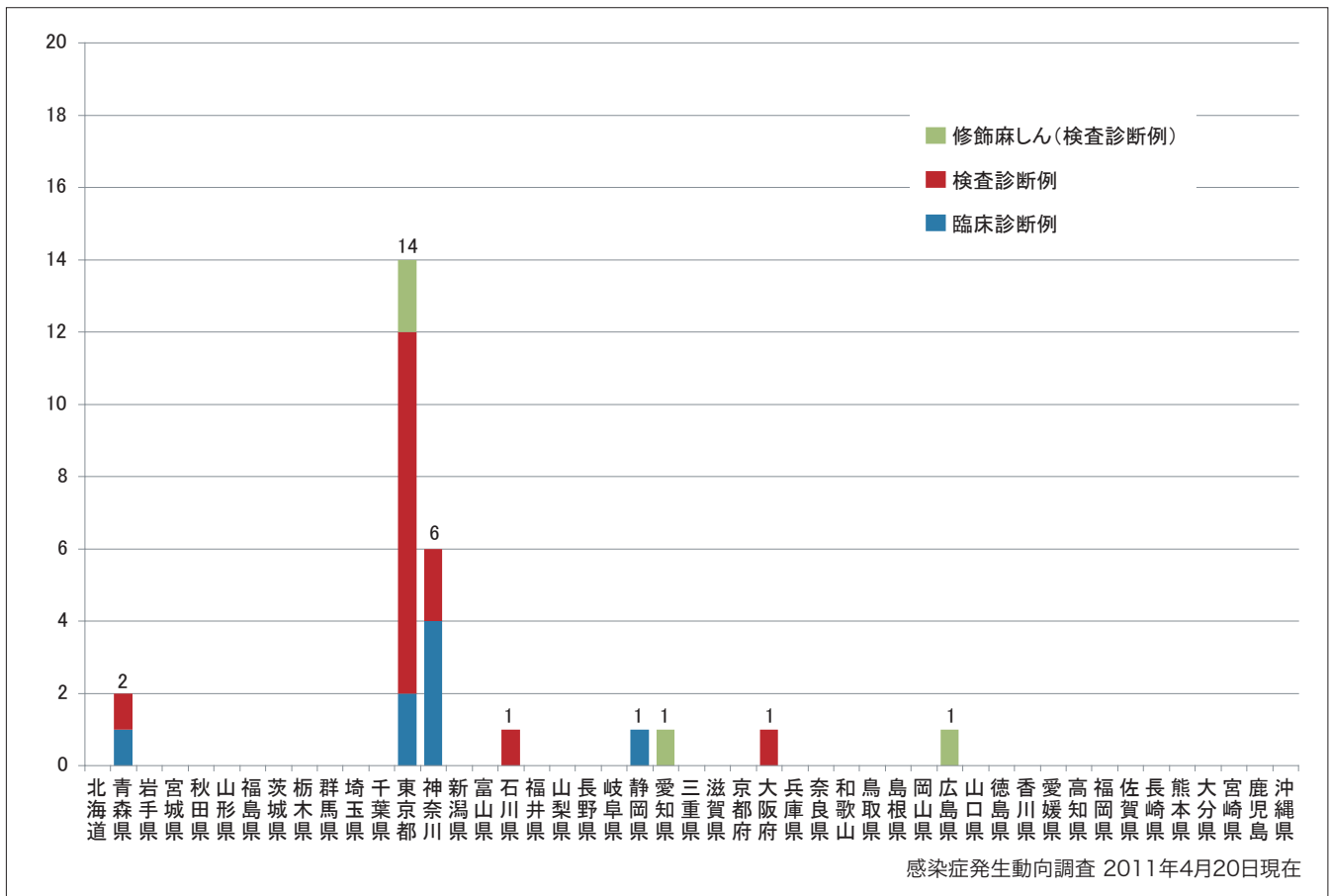
Weekly measles cases from week 1 to week 15 in 2011 (based on diagnosed week as of April 20, 2011).



2. 都道府県別病型別麻疹報告数2011年 第15週 (n=27)

Reported measles cases by prefecture and methods of diagnosis in week 15, 2011 (as of April 20, 2011).

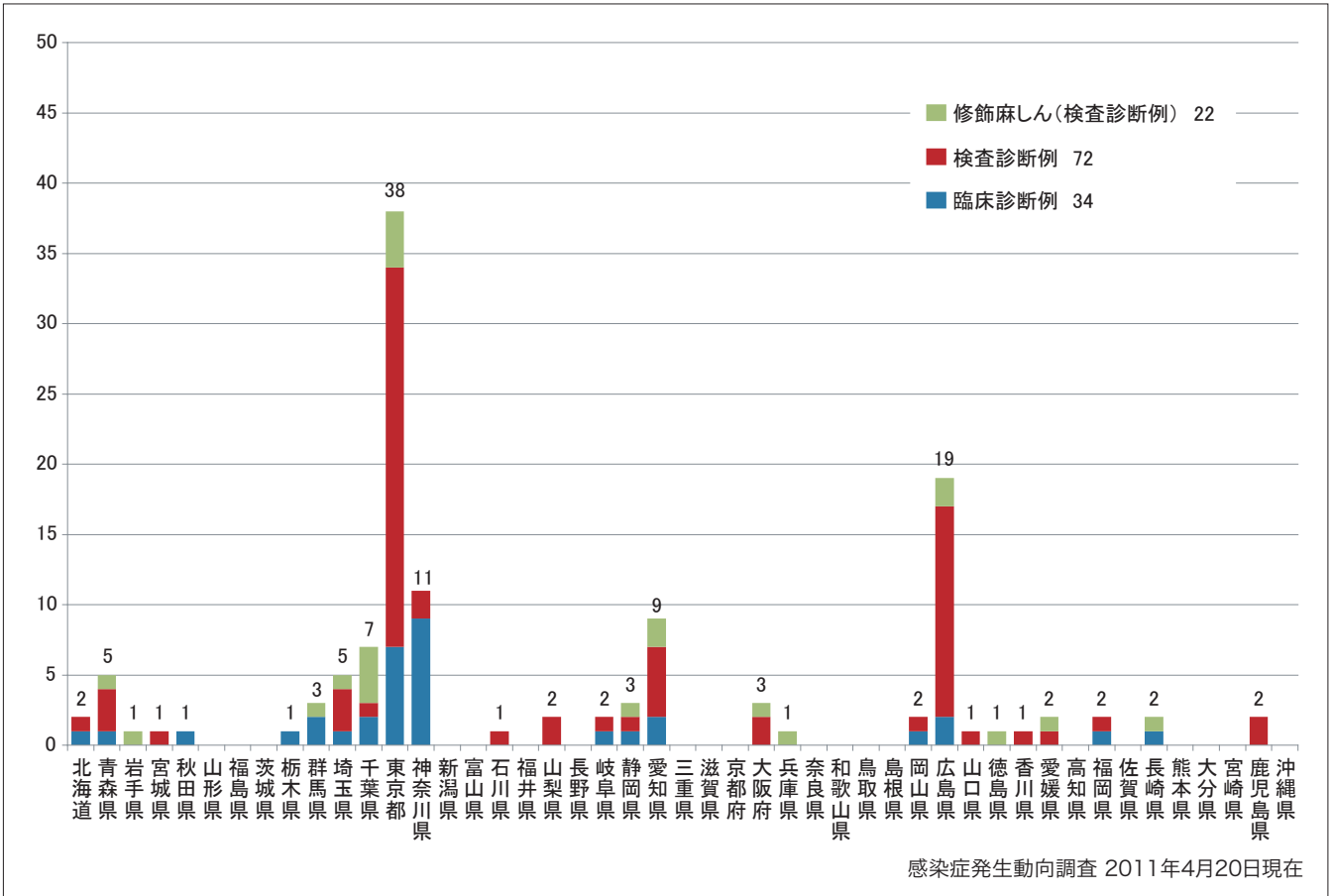
■ Clinically diagnosed ■ Laboratory diagnosed ■ Modified measles, laboratory diagnosed



3. 都道府県別病型別麻疹累積報告数 2011年 第1~15週 (n=128)

Cumulative measles cases by prefecture and methods of diagnosis from week 1 to week 15, 2011 (as of April 20, 2011).

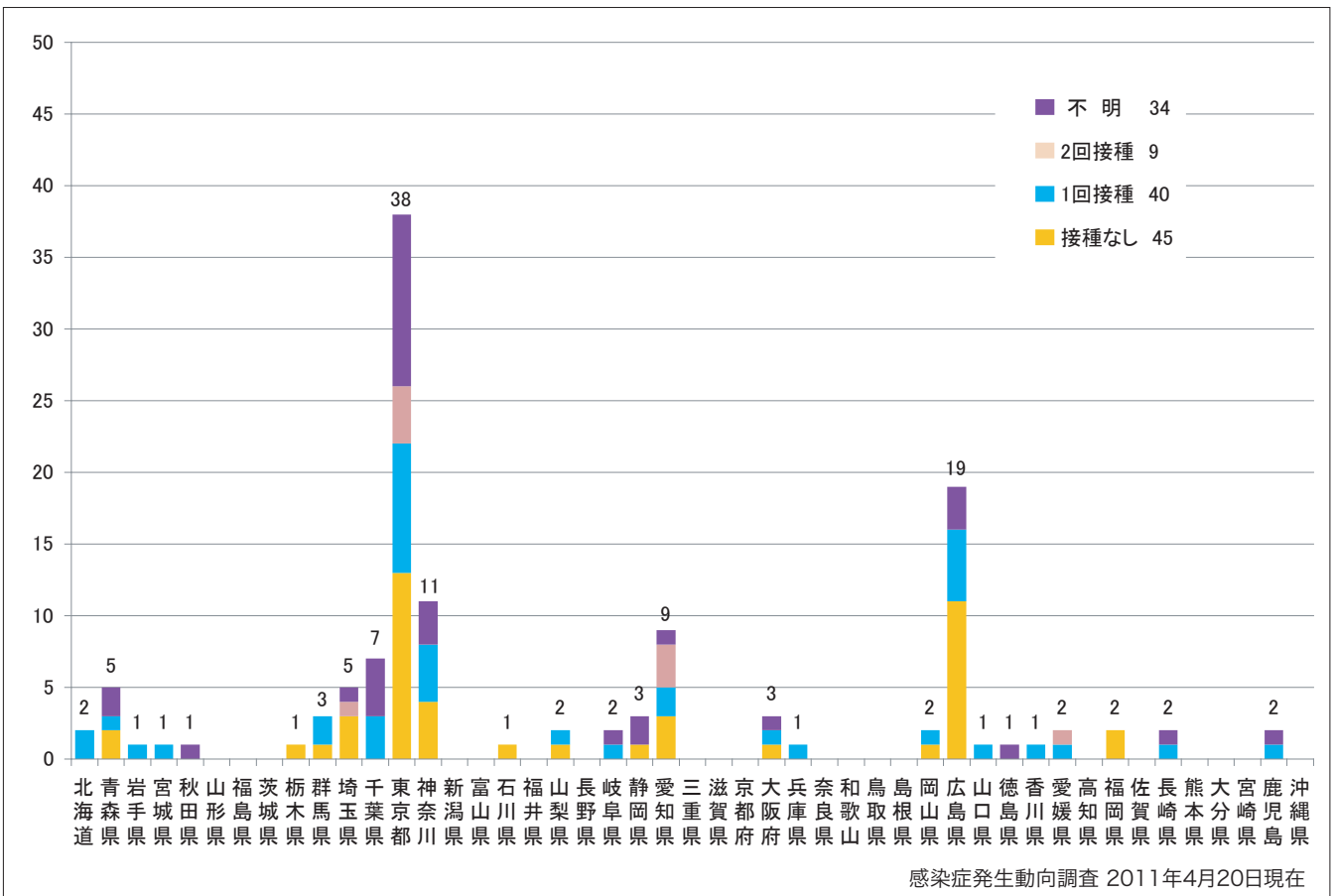
■ Clinically diagnosed ■ Laboratory diagnosed ■ Modified measles, laboratory diagnosed



4. 都道府県別接種歴別麻疹累積報告数 2011年 第1~15週 (n=128)

Cumulative measles cases by prefecture and vaccinated status from week 1 to week 15, 2011 (as of April 20, 2011).

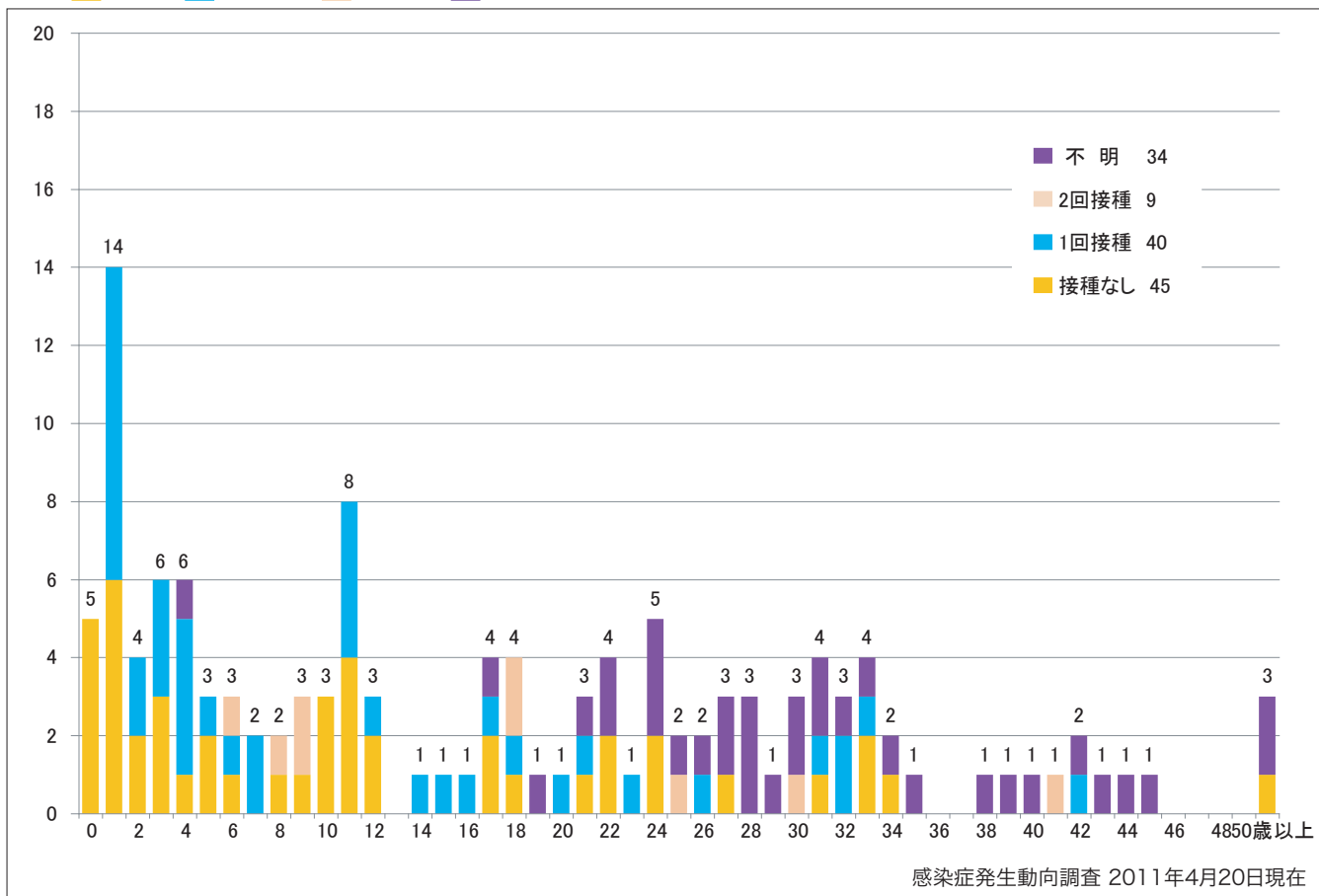
■ None ■ MCV1 ■ MCV2 ■ Unknown



5. 年齢群別接種歴別麻疹累積報告数 2011年 第1~15週 (n=128)

Cumulative measles cases by age and vaccinated status from week 1 to week 15, 2011 (as of April 20, 2011).

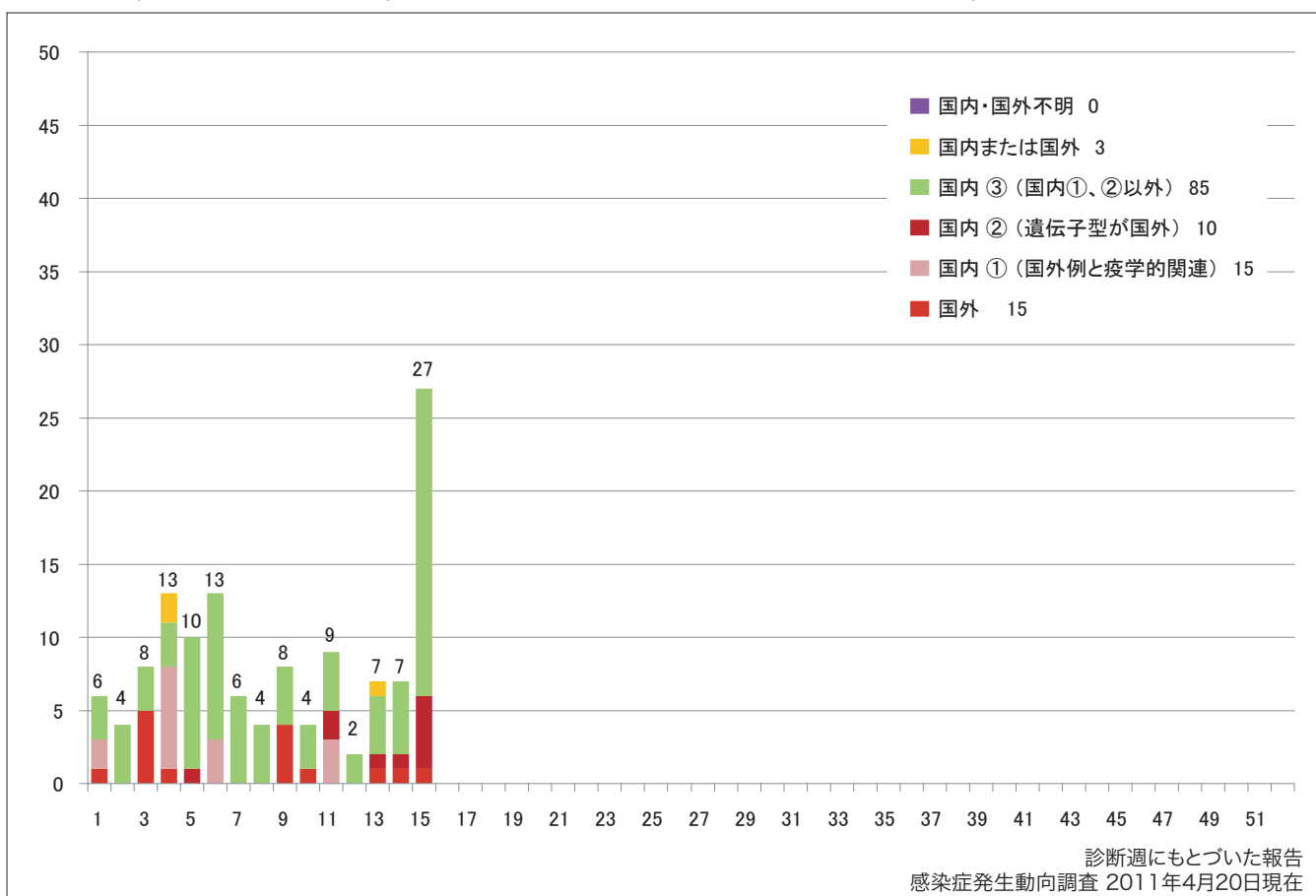
None MCV1 MCV2 Unknown



6. 週別推定感染地域(国内・外)別麻疹報告数 2011年 第1~15週 (n=128)

Weekly measles cases by acquired region from week 1 to week 15 in 2011 (based on diagnosed week as of April 20, 2011).

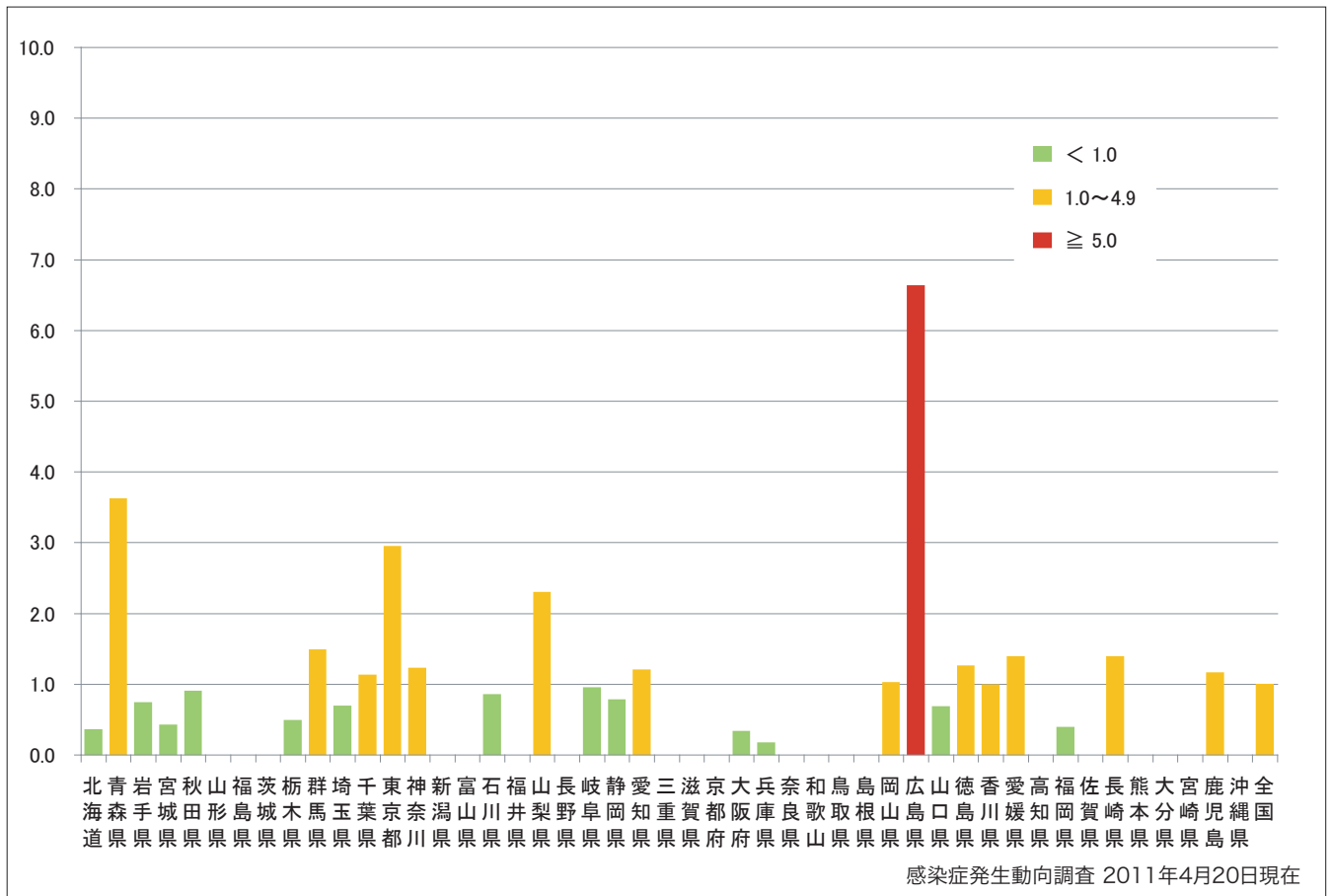
Imported cases Import-linked cases Domestic cases Unspecified Unknown



7. 都道府県別人口百万人あたり麻しん報告数 2011年 第1~15週 (n=128)

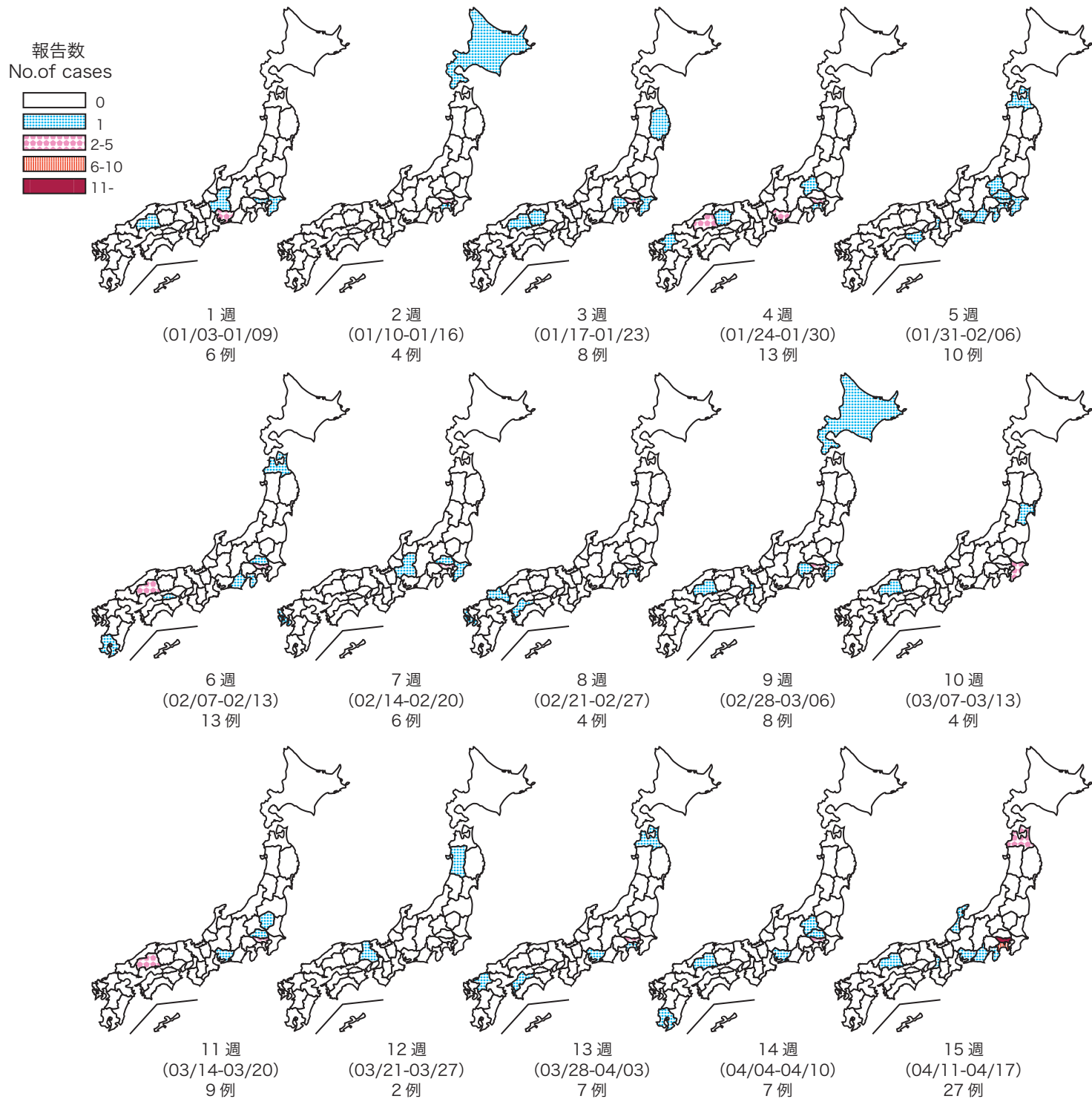
Number of reported cases per 1 million population by prefectures from week 1 to week 15, 2011 (as of April 20, 2011).

■ <1.0 ■ 1.0~4.9 ■ ≥5.0



8. 都道府県別麻疹週別報告状況 2011年 第1~15週 感染症発生動向調査

Weekly measles cases from week 1 to week 15, 2011 (based on diagnosed week as of April 20, 2011)



感染症発生動向調査 2011年4月20日現在