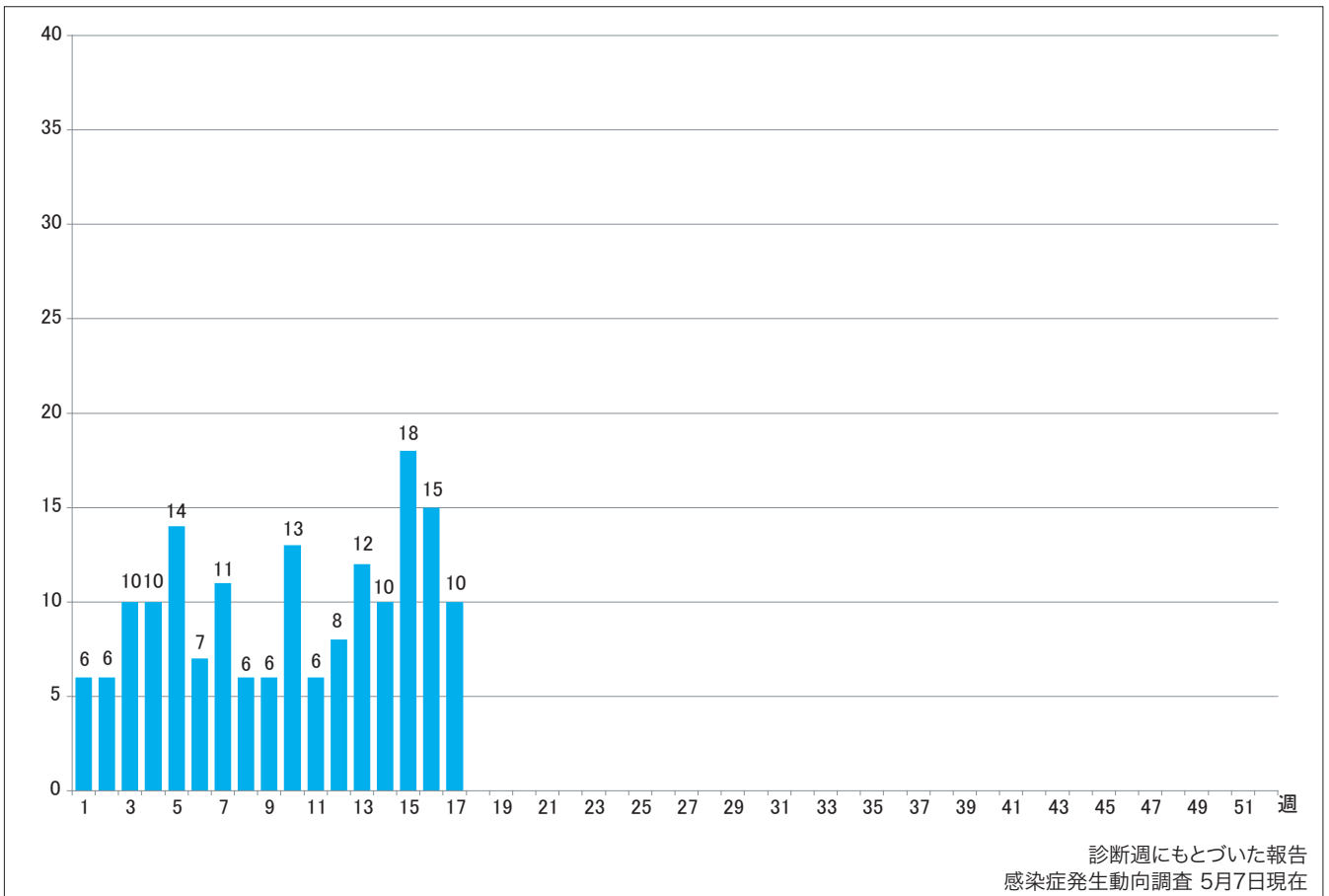


1. 週別麻疹報告数 2010年第1週-17週 (n=168)

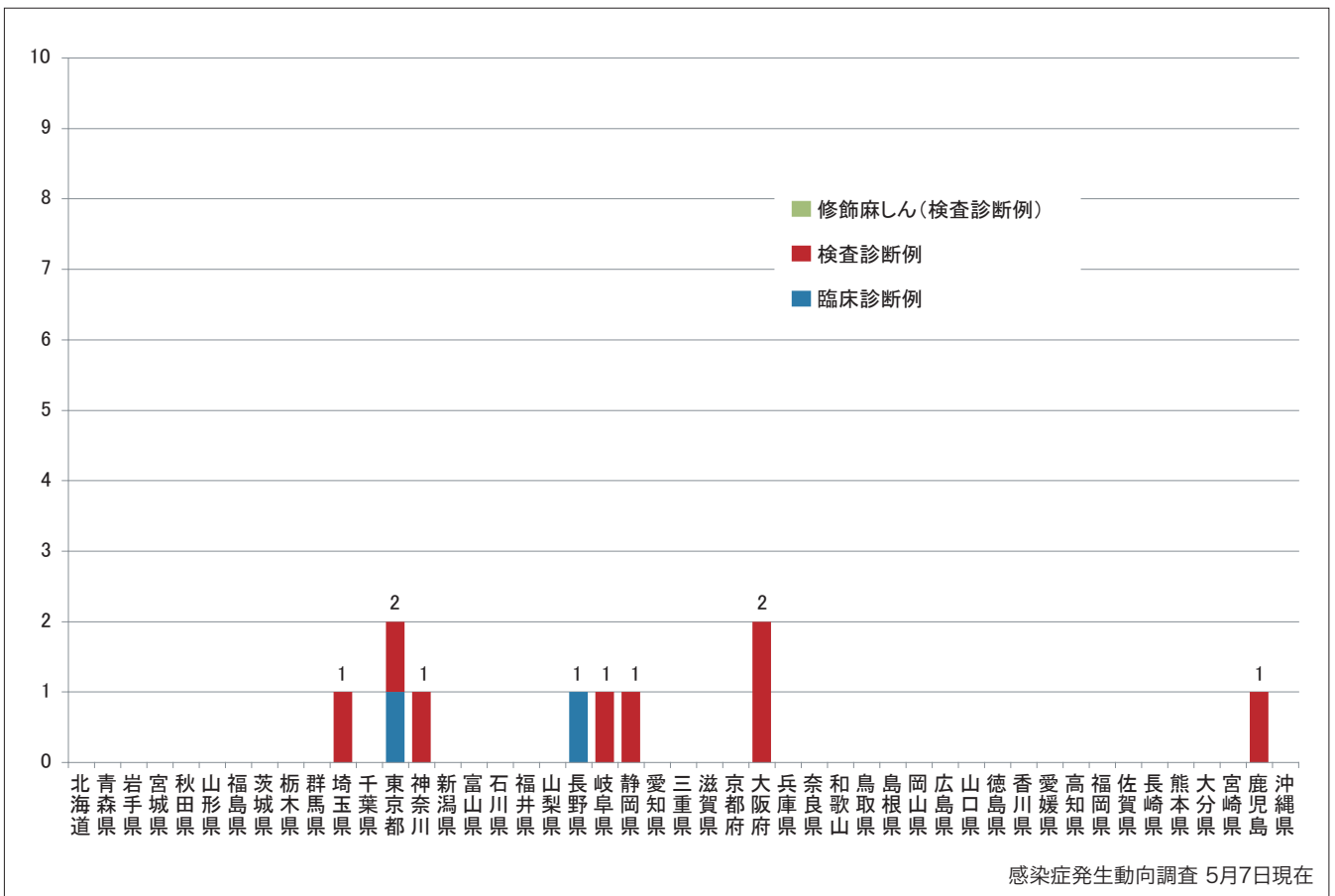
Weekly measles cases from week 1 to week 17 in 2010 (based on diagnosed week as of May 7).



2. 都道府県別病型別麻疹報告数2010年第17週 (n=10)

Reported measles cases by prefecture and methods of diagnosis in week 17, 2010 (as of May 7).

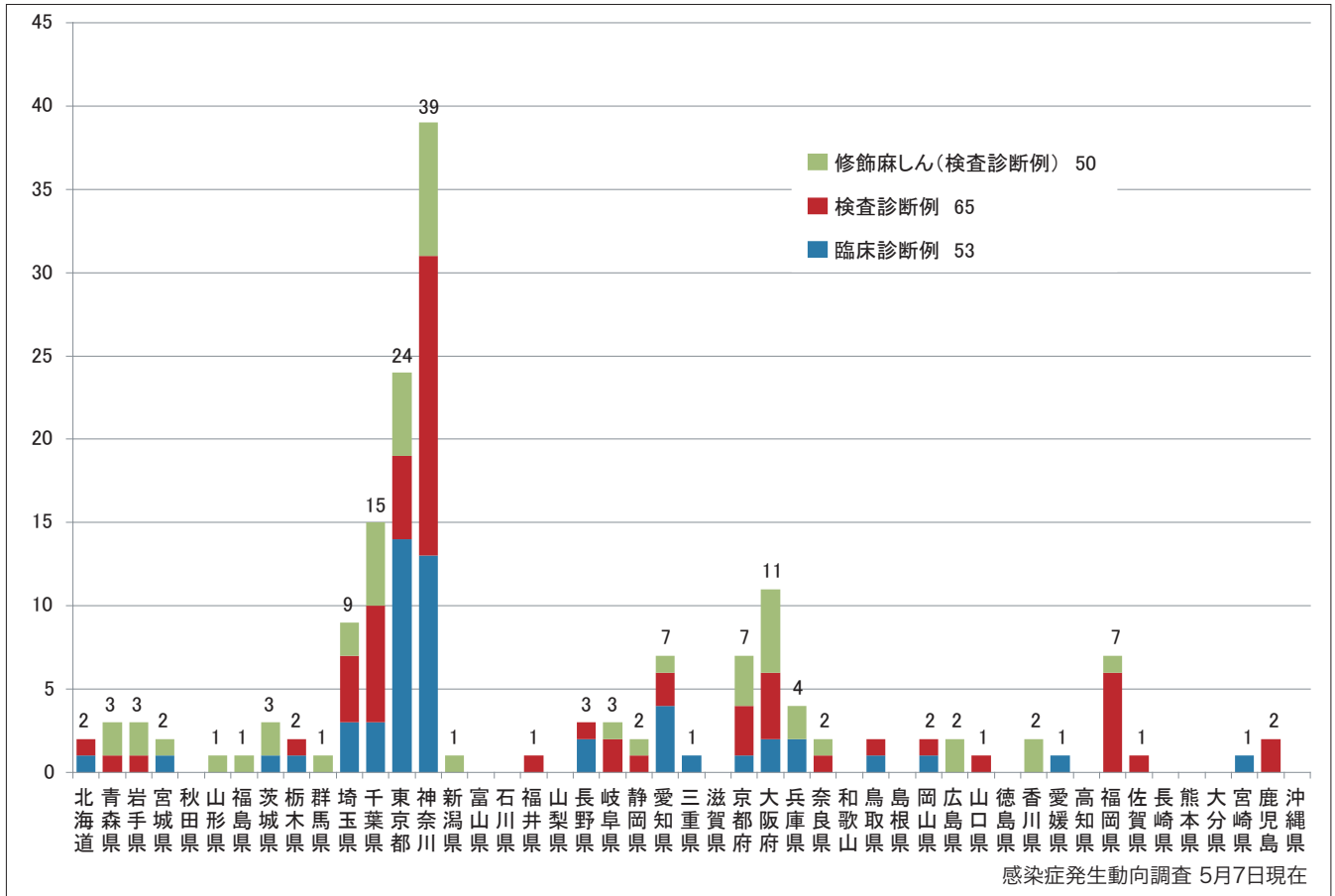
■ Clinically diagnosed ■ Laboratory diagnosed ■ Modified measles, laboratory diagnosed



3. 都道府県別病型別麻疹累積報告数 2010年第1週-17週 (n=168)

Cumulative measles cases by prefecture and methods of diagnosis from week 1 to week 17, 2010 (as of May 7).

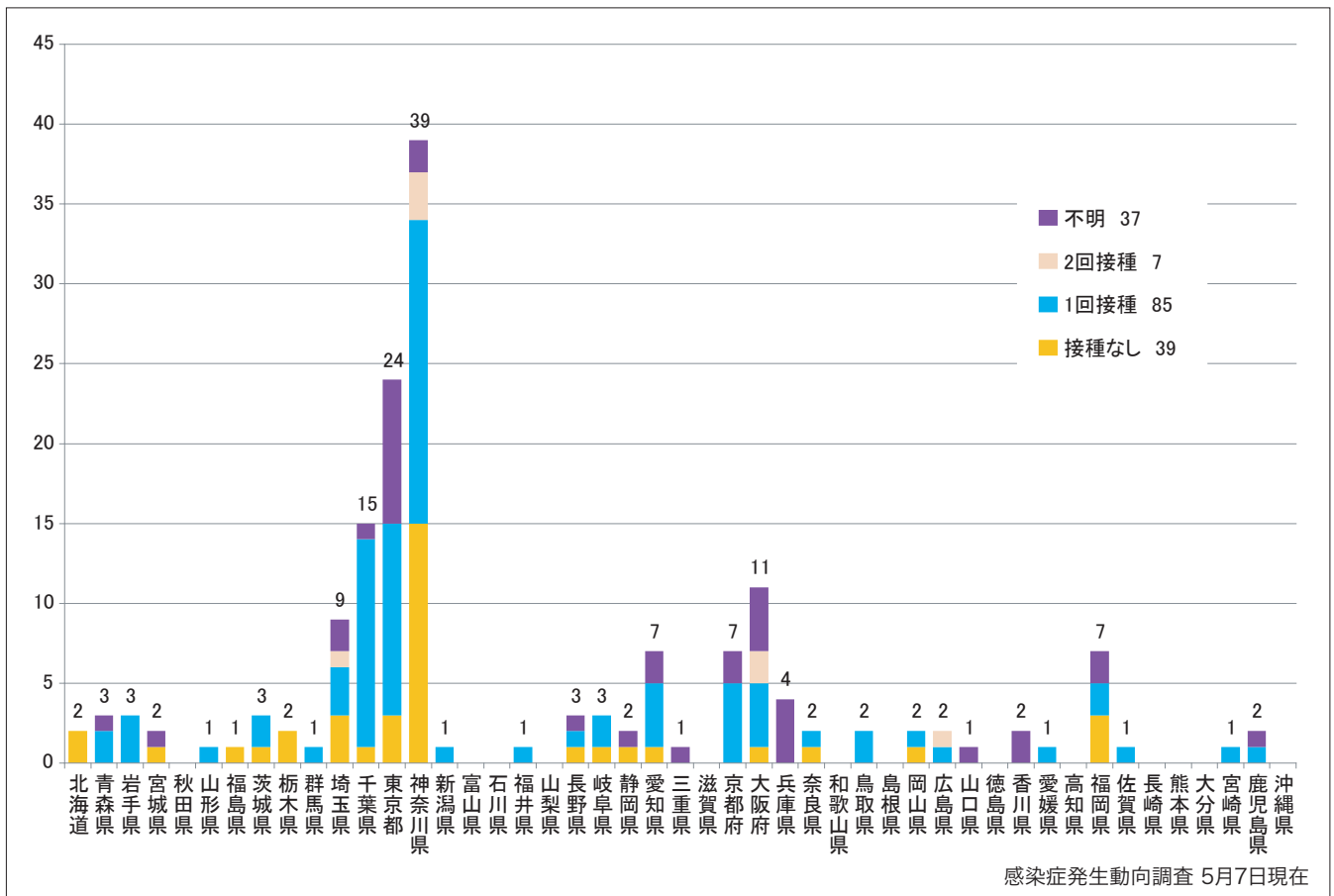
■ Clinically diagnosed ■ Laboratory diagnosed ■ Modified measles, laboratory diagnosed



4. 都道府県別接種歴別麻疹累積報告数 2010年第1週-17週 (n=168)

Cumulative measles cases by prefecture and vaccinated status from week 1 to week 17, 2010 (as of May 7).

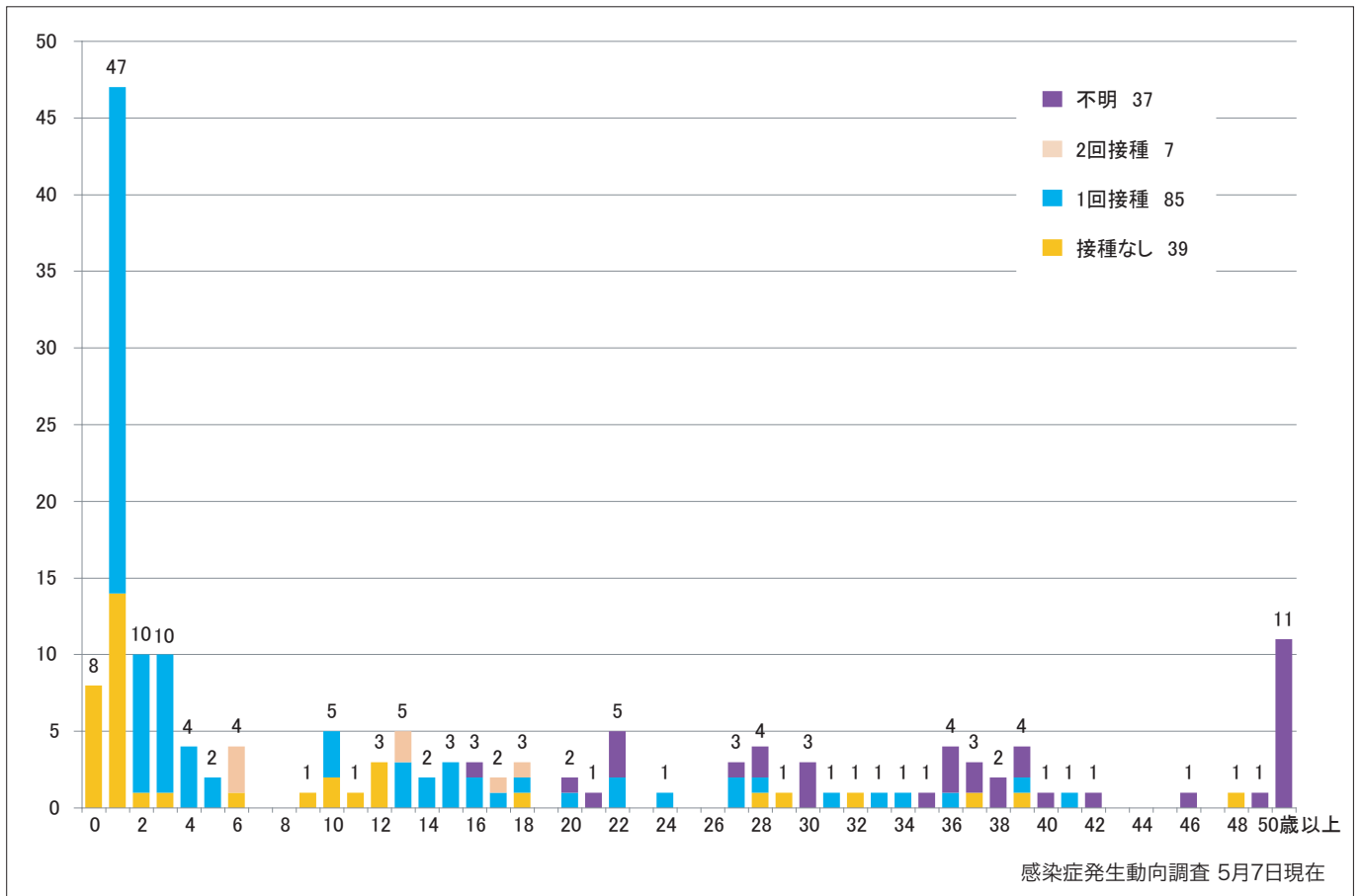
■ None ■ MCV1 ■ MCV2 ■ Unknown



5. 年齢群別接種歴別麻疹累積報告数 2010年第1週-17週 (n=168)

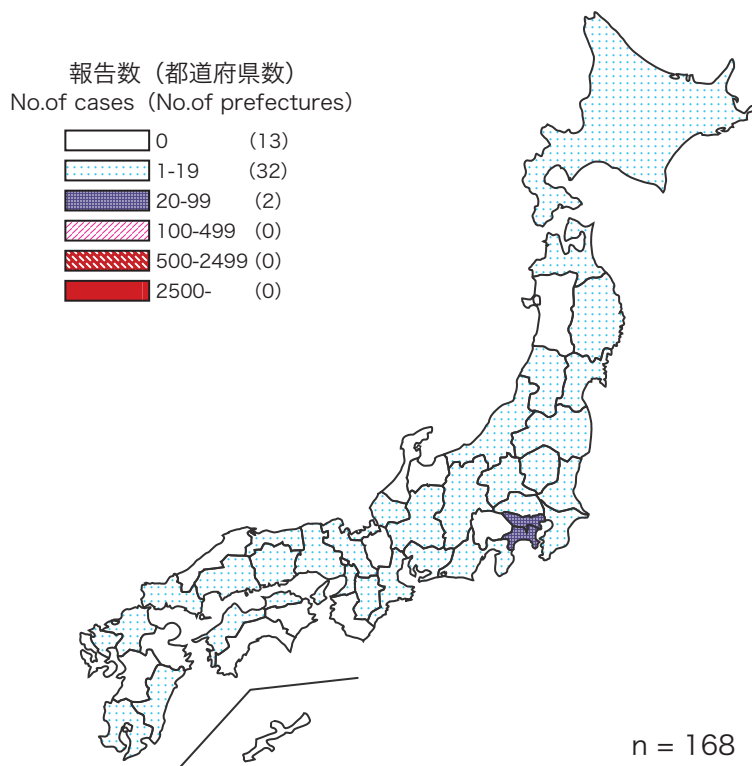
Cumulative measles cases by age and vaccinated status from week 1 to week 17, 2010 (as of May 7).

None MCV1 MCV2 Unknown



6. 都道府県別麻疹累積報告状況、2010年第1週-17週 感染症発生動向調査

Cumulative measles cases by prefecture from week 1 to week 17, 2010 (as of May 7)



7. 都道府県別麻疹週別報告状況 2010年第1週-17週 感染症発生動向調査

Weekly measles cases from week 1 to week 17, 2010 (based on diagnosed week as of May 7)

