

# Phylogenetic analysis of influenza A(H3N2) HA genes

**23/24, 24/25 vaccine strain in Japan**

HI reference strain

July 2024

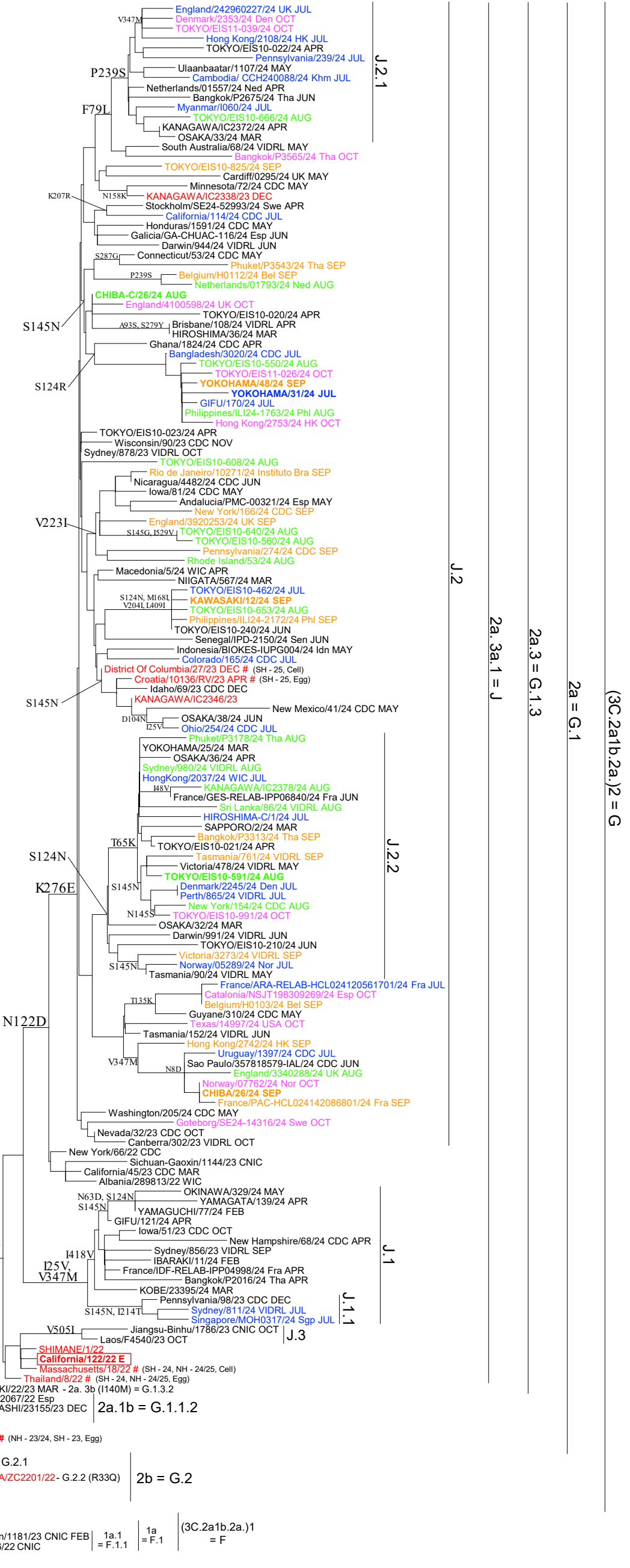
August 2024

September 2024

October 2024

#: WHO recommended vaccine strain (Northern/Southern Hemisphere, season, egg/cell)

subclade	subclade (new)	AA substitution
1a	F.1	K171N
1a.1	F.1.1	I48T
2a	G.1	H156S
2a.1	G.1.1	D53G, D104G, K276R
2a.1a	G.1.1.1	L157I, S262N
2a.1b	G.1.1.2	I140K, R299K
2a.2	G.1.2	D53G, R201K, S219Y
2a.3	G.1.3	D53N, N96S, I192F
2a.3a	G.1.3.1	E50K
2a.3b	G.1.3.2	I140M
2a.3a.1	J	I140K
-	J.1	I25V, V347M
-	J.1.1	S145N
-	J.2	N122D, K276E
-	J.2.1	F79L, P239S
-	J.2.2	S124N
-	J.3	V505I
-	J.4	Q173R, K276E
2b	G.2	E50K, F79V, I140K
-	G.2.1	T135A, S262N
-	G.2.2	R33Q, S262N
2c	G.3	S205F, A212T
-	G.4	G62R, S156Q, S199P



0.001