

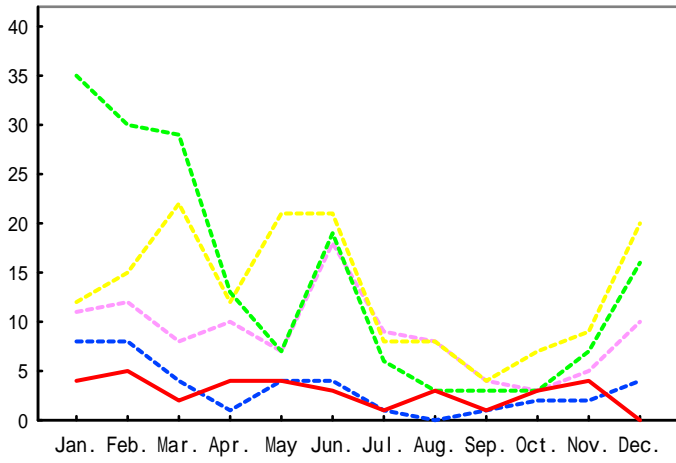
Monthly reports of group A Streptococcus T serotypes, 2010 - 2014

(Infectious Agents Surveillance Report: Data based on the reports received before December 28, 2014 from public health institutes)

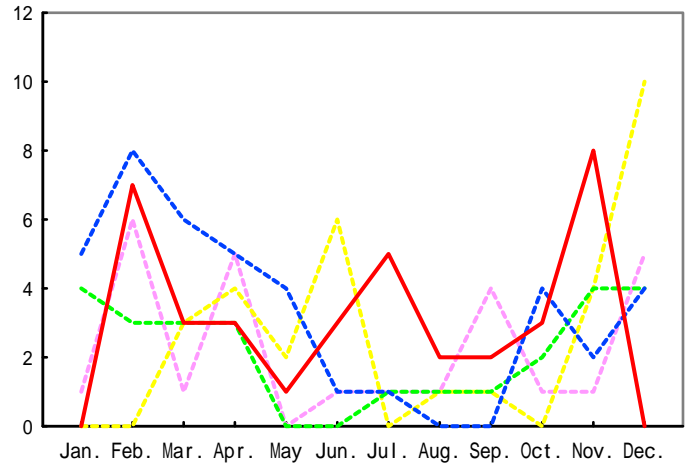


Infectious Agents Surveillance Report

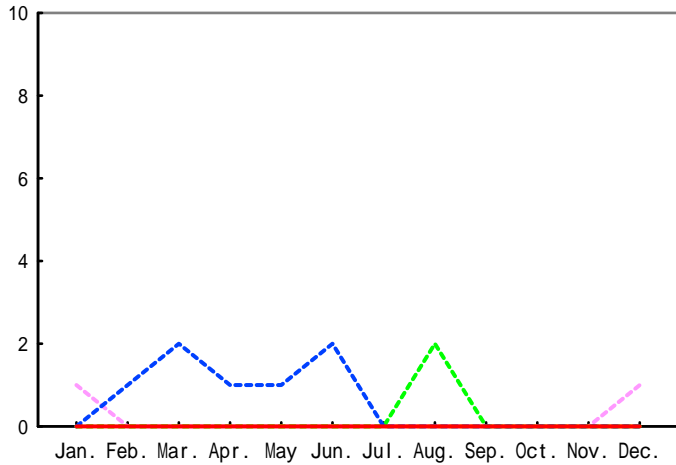
T1



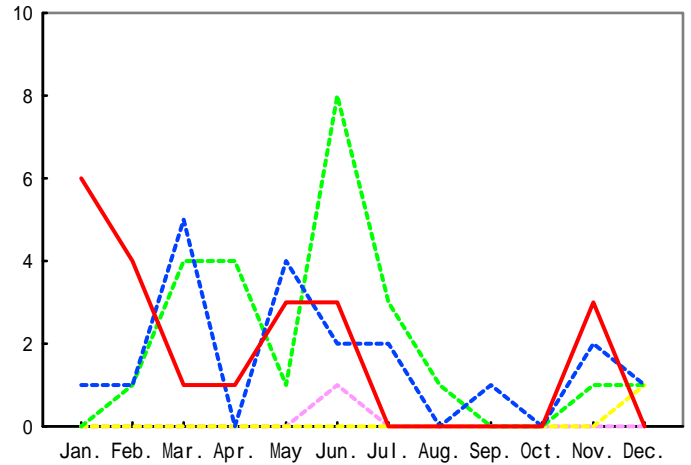
T4



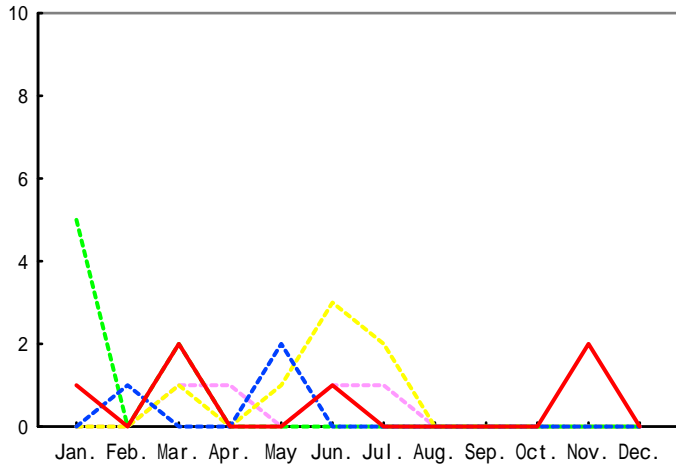
T2



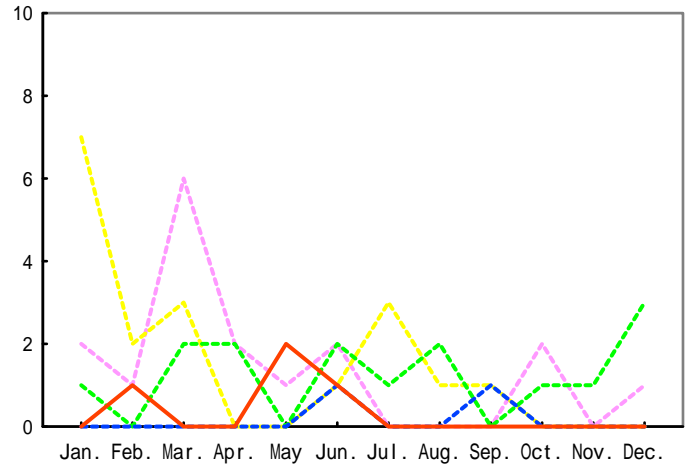
T6



T3



T11



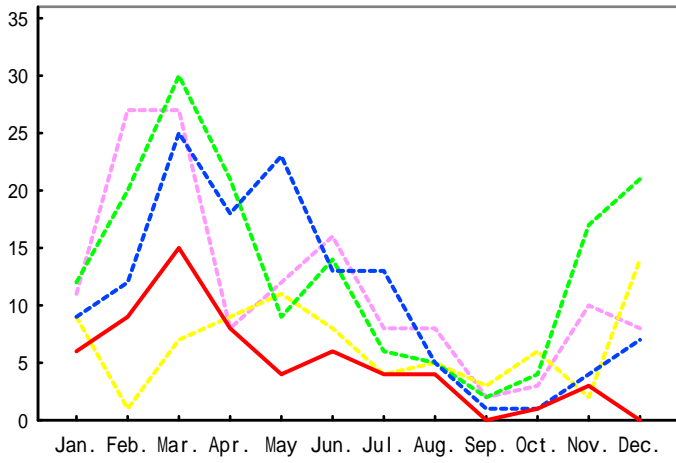
Monthly reports of group A Streptococcus T serotypes, 2010 - 2014

(Infectious Agents Surveillance Report: Data based on the reports received before December 28, 2014 from public health institutes)

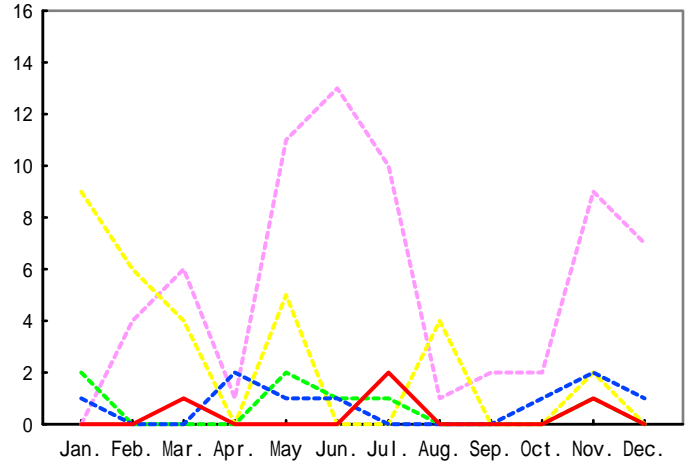


Infectious Agents Surveillance Report

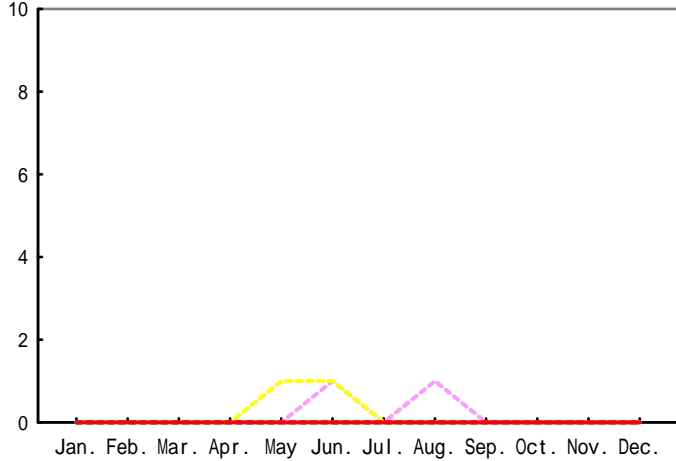
T12



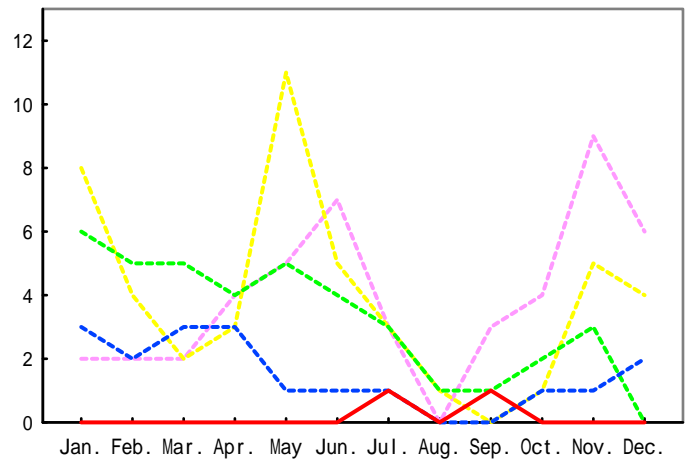
T25



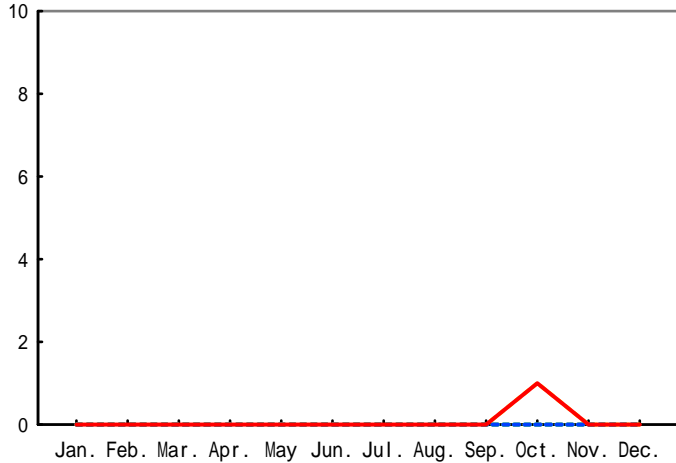
T13



T28



T22



TB3264

